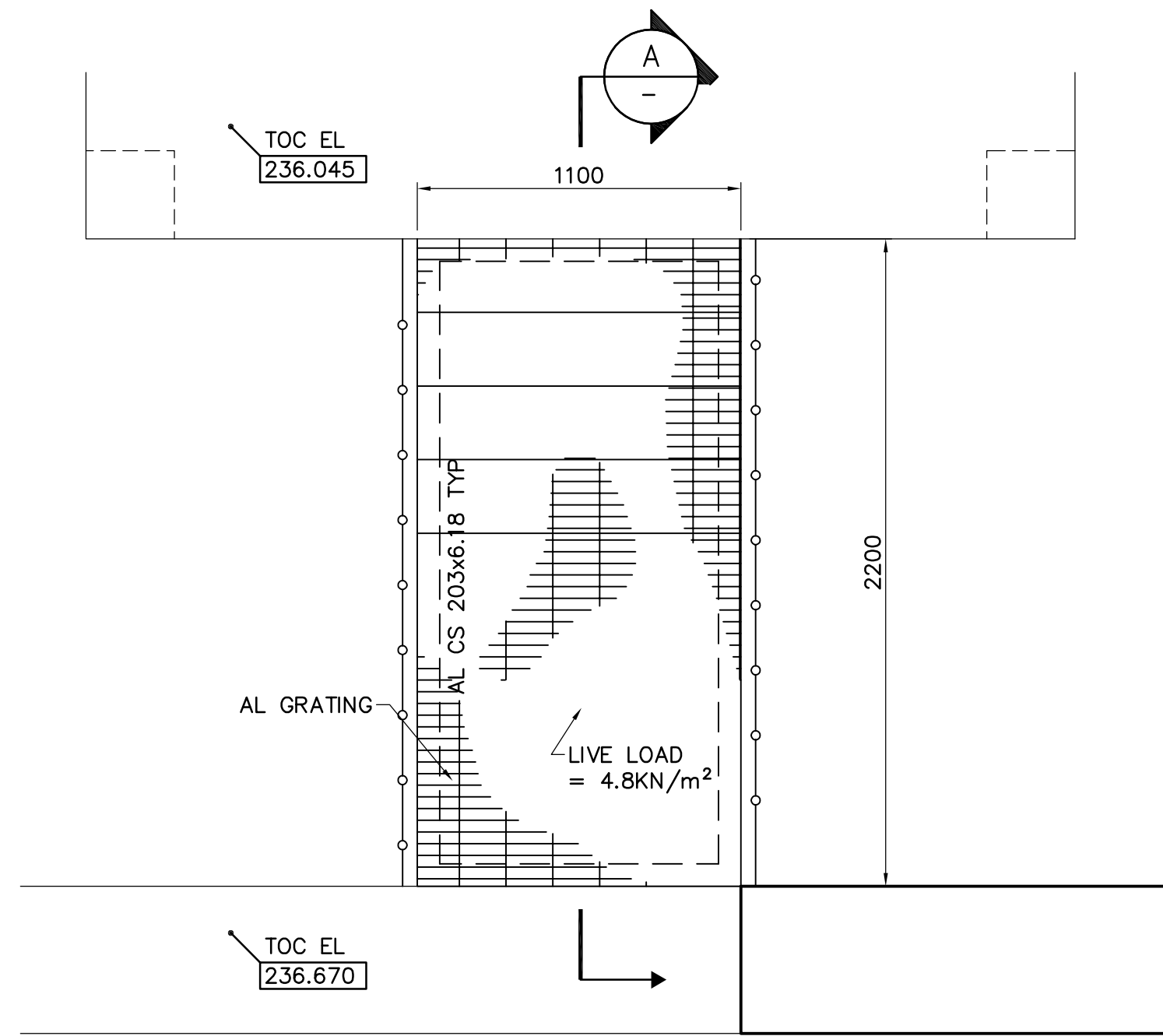
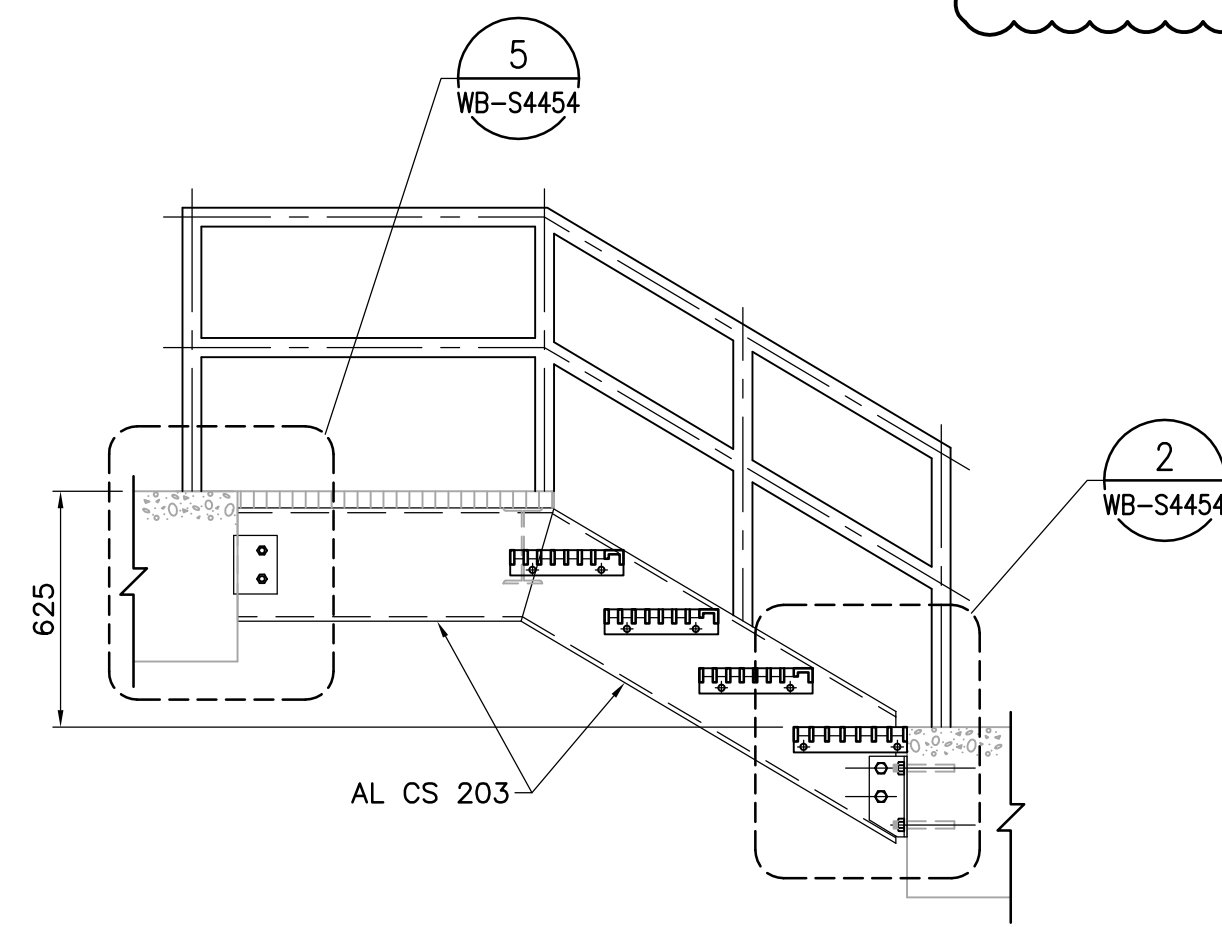


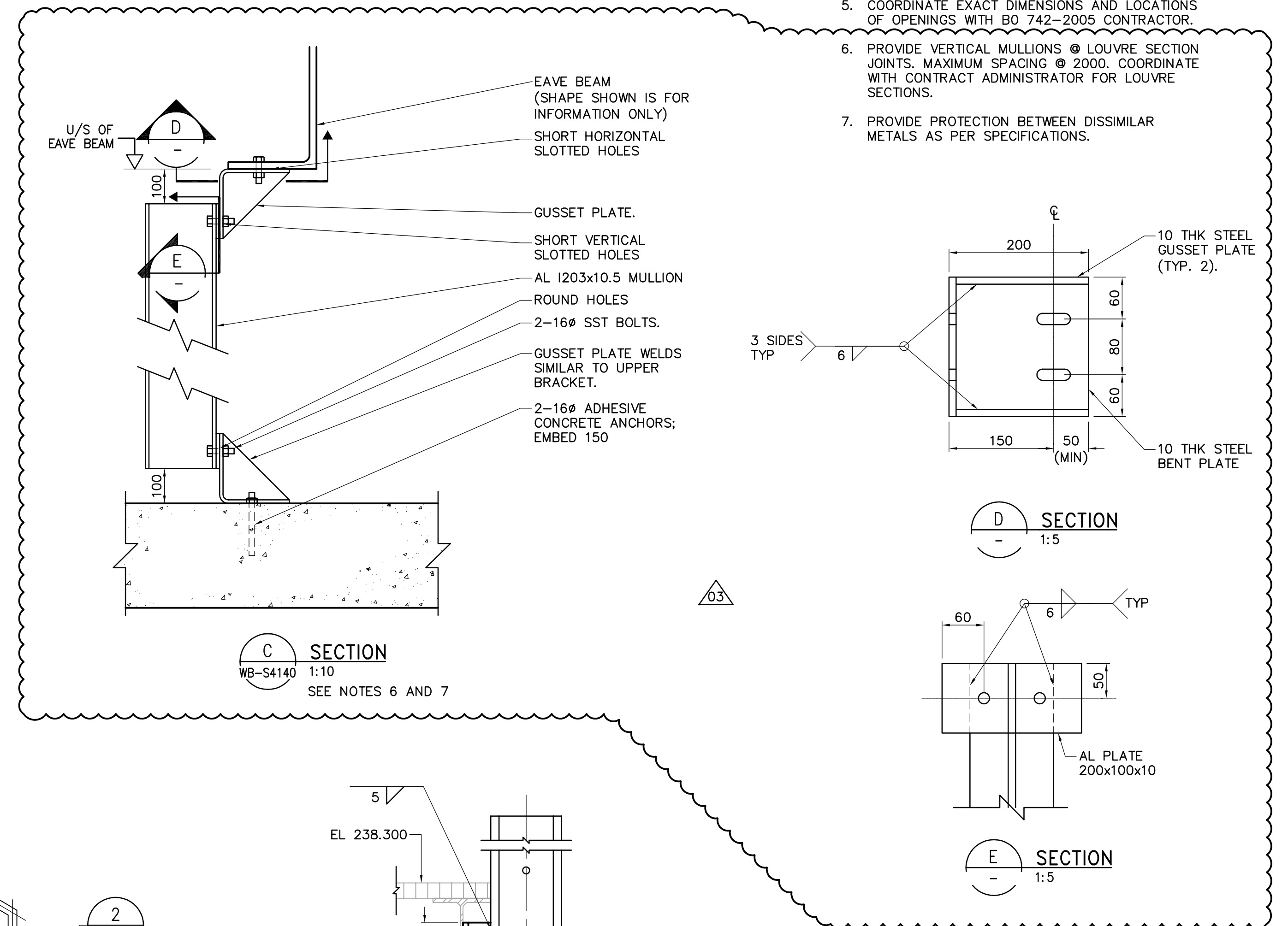
B SECTION
WA-S4131 1:50



1 DETAIL
WA-S4116 1:20



A SECTION
1:20

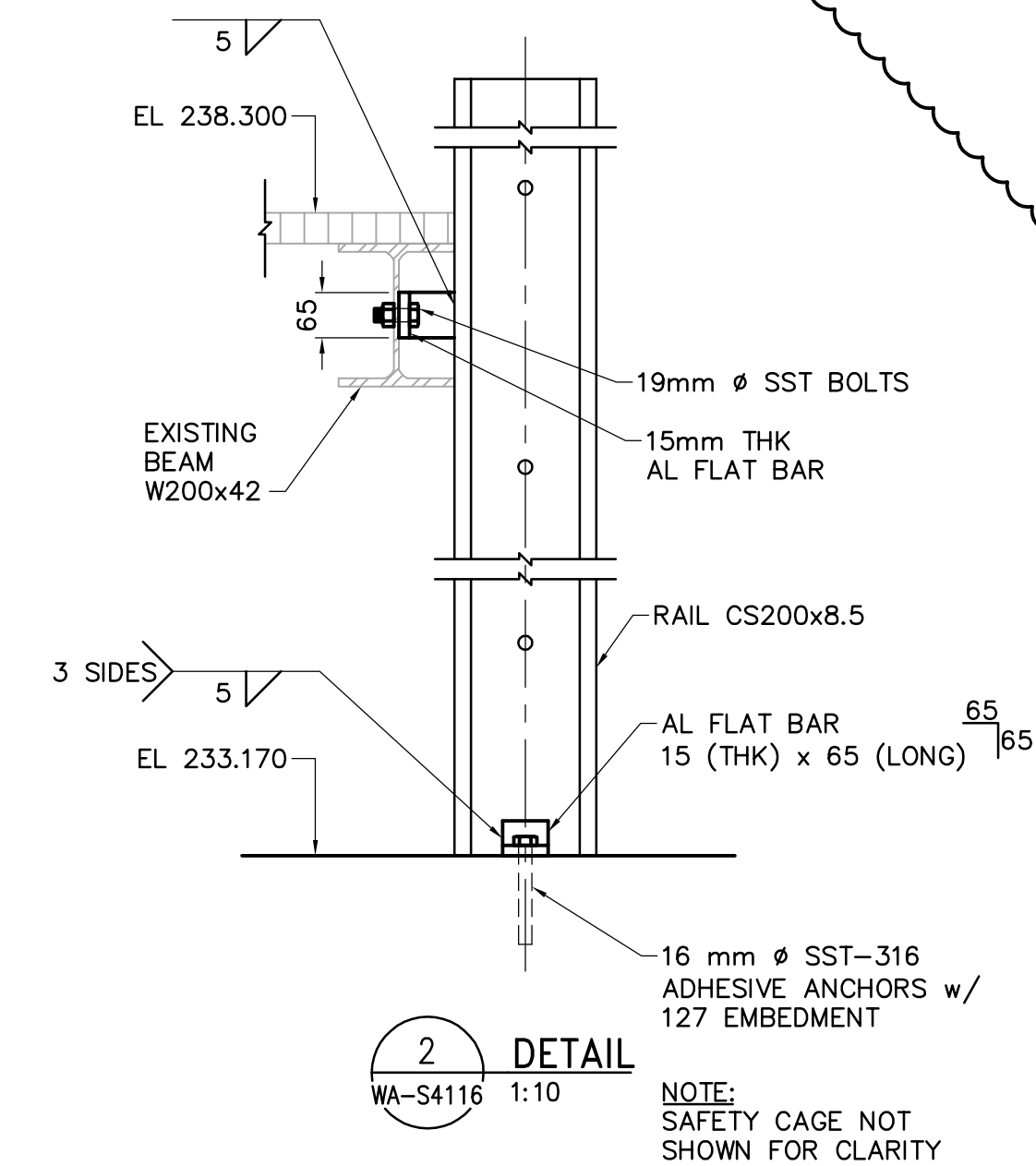


C SECTION
WB-S4140 1:10
SEE NOTES 6 AND 7

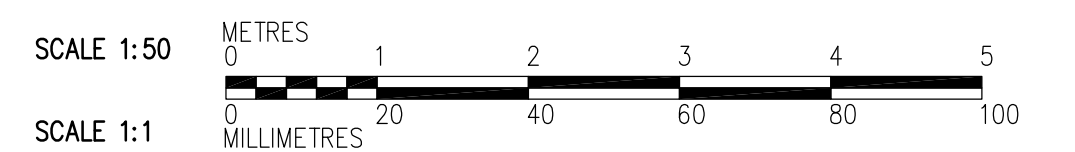
D SECTION
1:5

E SECTION
1:5

- NOTES:**
- FOR WALL CONTROL JOINTS SEE ARCHITECTURAL DRAWINGS.
 - SEE DETAIL 2 FOR OPENING REINFORCING.
WB-S4451
 - USE NO.9 ASWG@400 FOR JOINT REINFORCEMENT.
 - FOR DETAILS OF LINTELS, BOND BEAMS, AND CORE FILLS REFER TO 2 AND 3.
WB-S4451 WB-S4451
 - COORDINATE EXACT DIMENSIONS AND LOCATIONS OF OPENINGS WITH BO 742-2005 CONTRACTOR.
 - PROVIDE VERTICAL MULLIONS @ LOUVRE SECTION JOINTS. MAXIMUM SPACING @ 2000. COORDINATE WITH CONTRACT ADMINISTRATOR FOR LOUVRE SECTIONS.
 - PROVIDE PROTECTION BETWEEN DISSIMILAR METALS AS PER SPECIFICATIONS.



2 DETAIL
WA-S4116 1:10



<p>Certificate of Authorization CH2M HILL Canada Ltd. No. 1441 Expiry: April 30, 2008</p>	<p>Frederickson Cooper ARCHITECTS</p>		<p>A Type International Ltd. Company</p>		ENGINEER'S SEAL ORIGINAL SIGNED BY C. MILITANO 2007/06/05	<p>THE CITY OF WINNIPEG WATER AND WASTE DEPARTMENT ENGINEERING DIVISION</p> <p>WATER TREATMENT PLANT ADMINISTRATION OFFICE AND PLANT INTERIOR FINISHES</p> <p>STRUCTURAL ADMINISTRATION AREA SECTIONS AND DETAILS</p>	CITY FILE NUMBER
	DESIGNED BY: MH	CHECKED BY: AP	CONSULTANT DRAWING NO. WA-S4202		SHEET OF		
	DRAWN BY: CR	APPROVED BY: AHL	RELEASED FOR CONSTRUCTION BY: R. SOROKOWSKI		CITY DRAWING NUMBER		
	SCALE: 1:50	DATE: 2007/06/12	DATE: 2007/05/06	1-0601A-A-S4202-001-03D			
B.M. ELEV.		NO. REVISIONS		NO. 03 95-2007 ADDENDUM 5 07/07/11 DK NO. 02 95-2007 ADDENDUM 2 07/06/18 MH NO. 01 ADDENDUM 1 07/06/12 MH NO. 00 ISSUED FOR TENDER 07/06/05 MH			