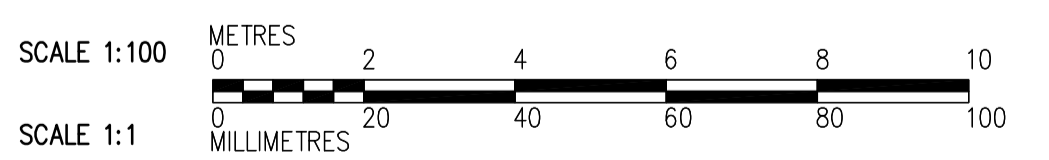
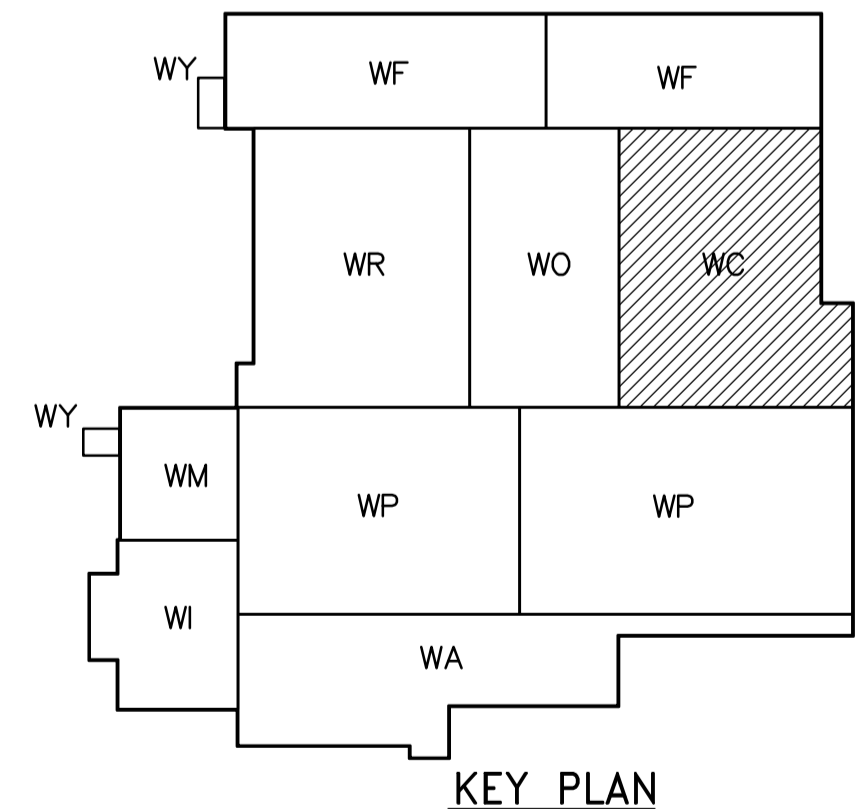


- NOTES:**
- FOR WALL CONTROL JOINTS SEE ARCHITECTURAL DRAWINGS.
  - SEE DETAIL FOR OPENING REINFORCING.  
WB-S4451
  - USE NO.9 ASWG@400 FOR JOINT REINFORCEMENT.
  - FOR DETAILS OF LINTELS, BOND BEAMS, AND CORE FILLS REFER TO AND .  
WB-S4451 WB-S4451
  - COORDINATE EXACT DIMENSIONS AND LOCATIONS OF OPENINGS WITH BO 742-2005 CONTRACTOR.
  - SEE SPECIFICATIONS FOR ALL FRP STAIRS, PLATFORMS AND HANDRAILS.
  - PROVIDE FRP HANDRAILING AND GUARDRAILING FOR FRP STAIRS AND PLATFORMS MORE THAN 600mm ABOVE CONCRETE FLOOR.
  - PROVIDE FRP SUPPORTS FOR FRP GRATING BETWEEN STORAGE TANKS (BY OTHERS)
  - THIS PLATFORM IS A STORAGE SHELF. STAIR/LADDER ACCESS NOT REQUIRED.

FIRST FLOOR PLAN  
1:100



 Certificate of Authorization CH2M HILL Canada Ltd. No. 1441 Expiry: April 30, 2008	B.M. ELEV.		 Frederickson Cooper ARCHITECTS	ENGINEER'S SEAL ORIGINAL SIGNED BY C. MILITANO 2007/06/05		 THE CITY OF WINNIPEG WATER AND WASTE DEPARTMENT ENGINEERING DIVISION WATER TREATMENT PLANT CHEMICAL FEED SYSTEMS OFFICE AND PLANT INTERIOR FINISHES	CITY FILE NUMBER SHEET OF CITY DRAWING NUMBER 1-0601C-A-S4111-001-010	
	DESIGNED BY	MH		CHECKED BY	AP			CONSULTANT DRAWING NO. WC-S4111
	DRAWN BY	CR		APPROVED BY	AHL			
	SCALE:	1:100		RELEASED FOR CONSTRUCTION BY:	R. SOROKOWSKI			
NO. REVISIONS	DATE	BY	DATE	2007/06/05	DATE	2007/05/06		