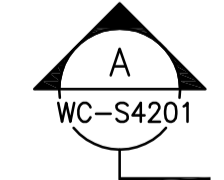
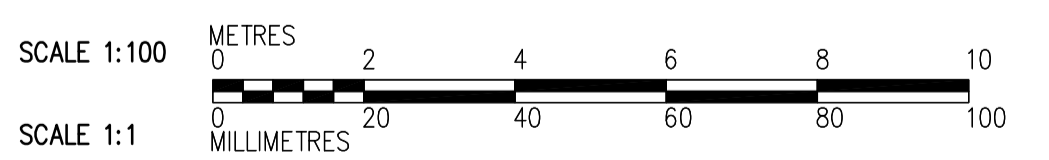
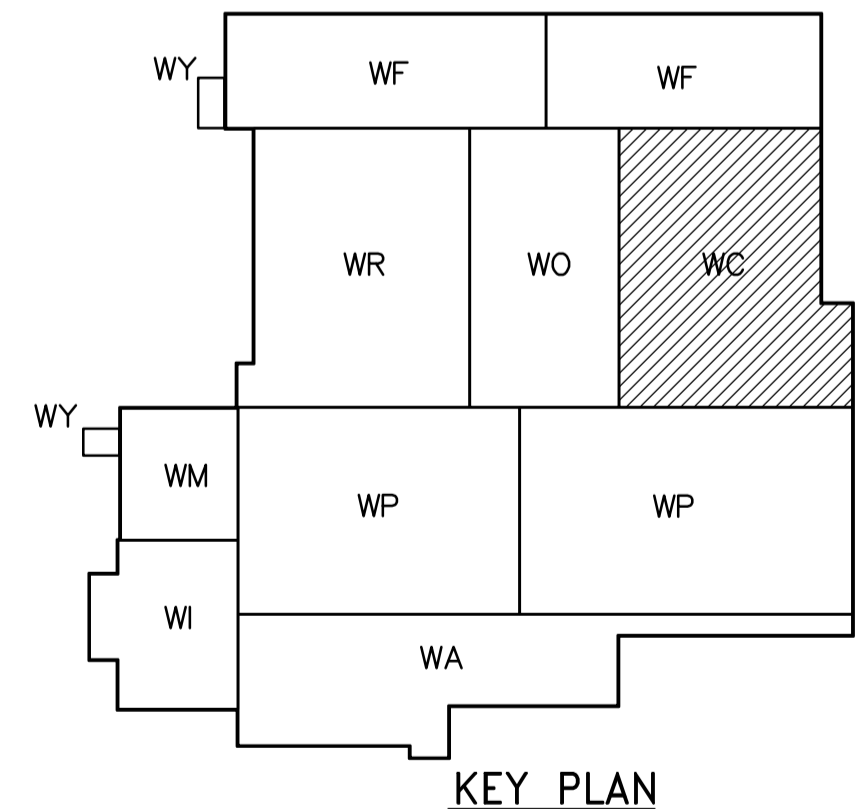


- NOTES:**
- FOR WALL CONTROL JOINTS SEE ARCHITECTURAL DRAWINGS.
  - SEE DETAIL FOR OPENING REINFORCING.  
WB-S4451
  - USE NO.9 ASWG@400 FOR JOINT REINFORCEMENT.
  - FOR DETAILS OF LINTELS, BOND BEAMS, AND CORE FILLS REFER TO AND .  
WB-S4451 WB-S4451
  - COORDINATE EXACT DIMENSIONS AND LOCATIONS OF OPENINGS WITH B0 742-2005 CONTRACTOR.

THIRD FLOOR PLAN  
1:100



 Certificate of Authorization CH2M HILL Canada Ltd. No. 1441 Expiry: April 30, 2008	B.M. ELEV.		 Frederickson Cooper ARCHITECTS	 A Tyco International Ltd. Company	ENGINEER'S SEAL  ORIGINAL SIGNED BY C. MILITANO 2007/06/05	 THE CITY OF WINNIPEG WATER AND WASTE DEPARTMENT ENGINEERING DIVISION  WATER TREATMENT PLANT CHEMICAL FEED SYSTEMS OFFICE AND PLANT INTERIOR FINISHES  STRUCTURAL CHEMICAL AREA THIRD FLOOR PLAN, SECTION AND DETAIL	CITY FILE NUMBER
	DESIGNED BY MH CHECKED BY AP						SHEET OF
	DRAWN BY CR APPROVED BY AHL		CITY DRAWING NUMBER				
	SCALE: 1:100 RELEASED FOR CONSTRUCTION BY: R. SOROKOWSKI DATE: 2007/05/06		CONSULTANT DRAWING NO. WC-S4131				
NO. REVISIONS DATE BY		DATE 2007/06/05 DATE 2007/05/06				1-0601C-A-S4131-001-01D	