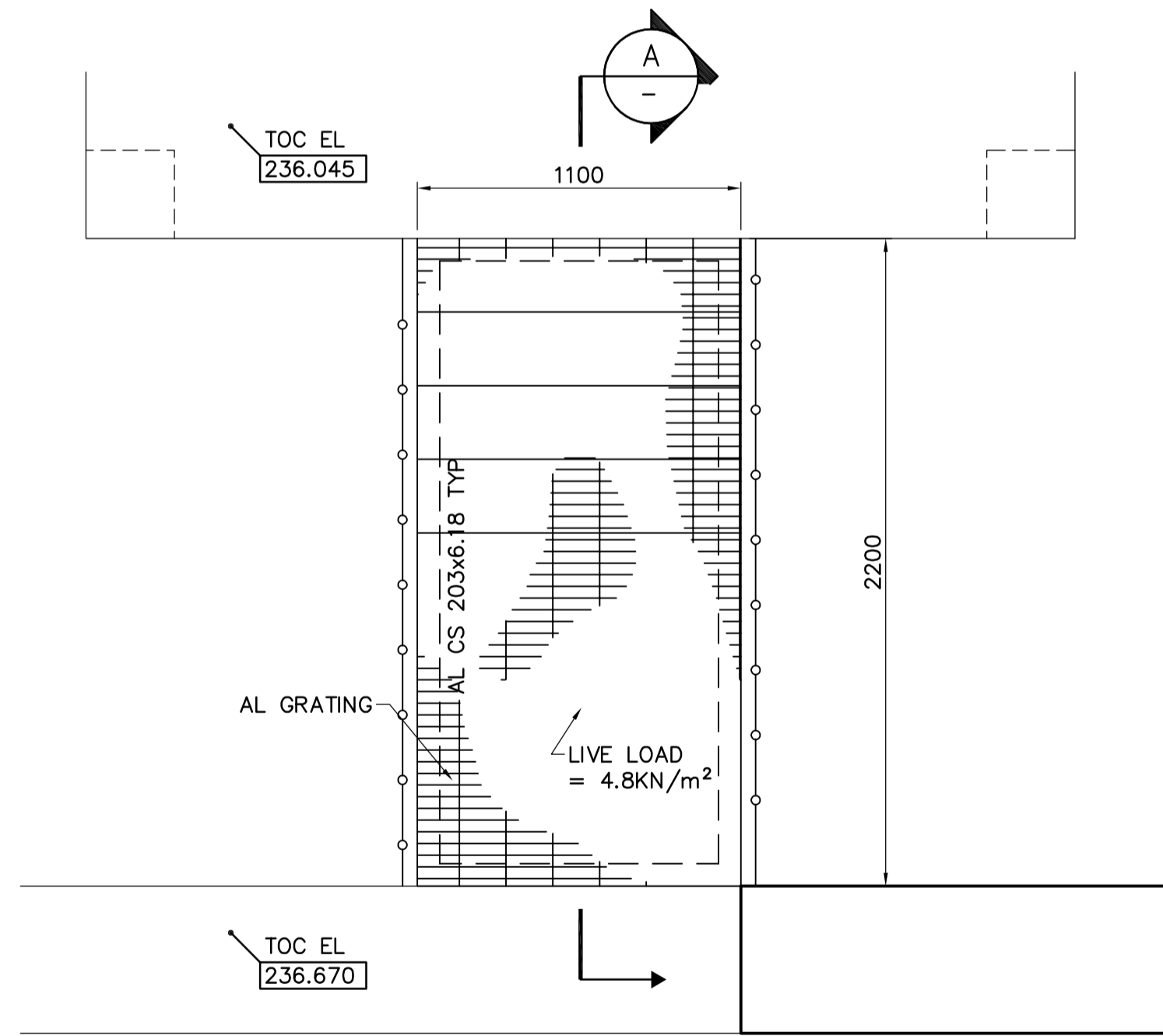
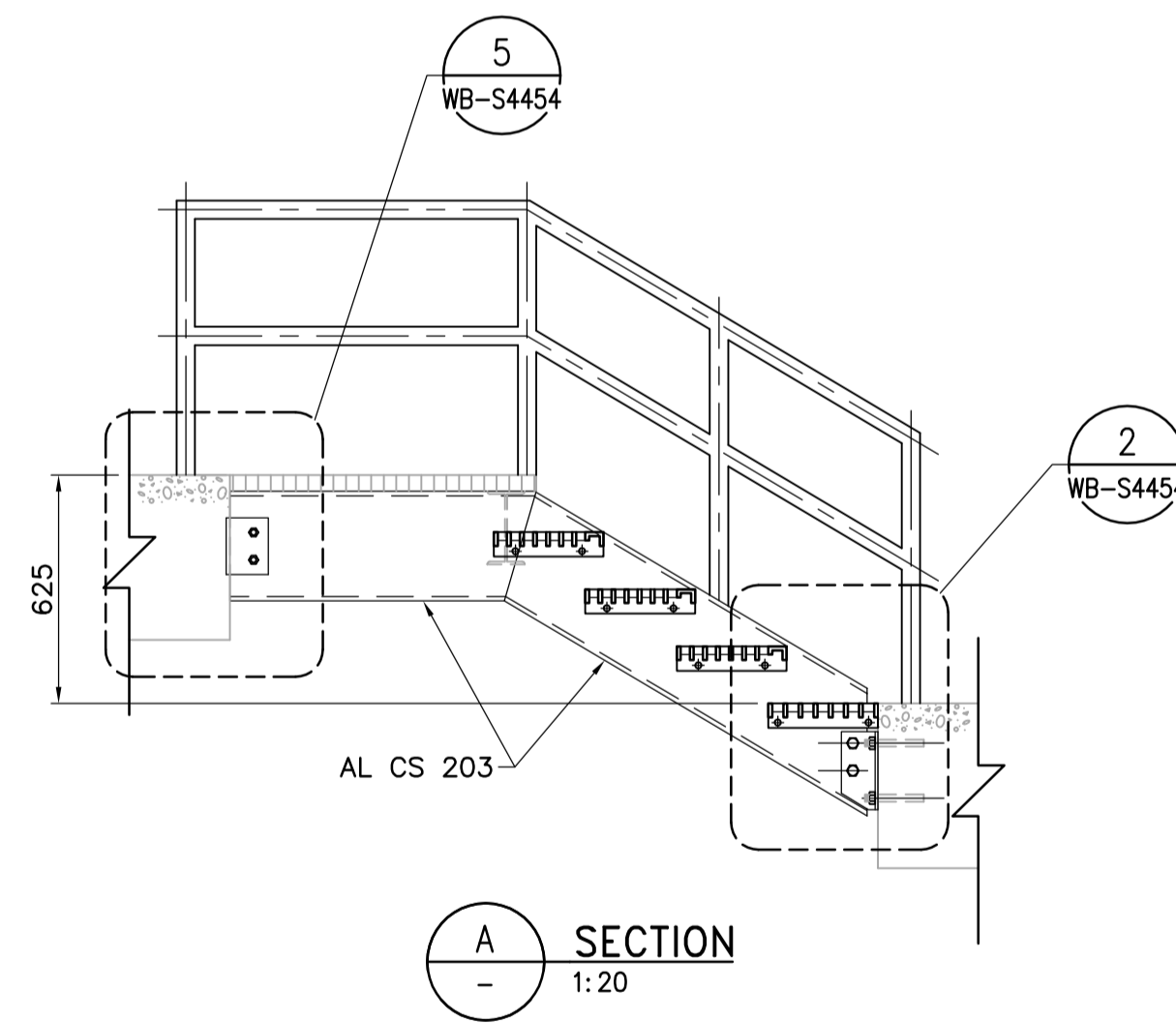


B SECTION
WA-S4131 1:50



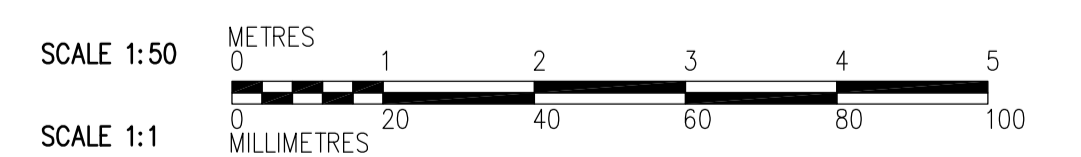
1 DETAIL
WA-S4116 1:20



A SECTION
1:20

NOTES:

- FOR WALL CONTROL JOINTS SEE ARCHITECTURAL DRAWINGS.
- SEE DETAIL **2** FOR OPENING REINFORCING.
WB-S4451
- USE NO.9 ASWG@400 FOR JOINT REINFORCEMENT.
- FOR DETAILS OF LINTELS, BOND BEAMS, AND CORE FILLS REFER TO **2** AND **3**.
WB-S4451 WB-S4451
- COORDINATE EXACT DIMENSIONS AND LOCATIONS OF OPENINGS WITH BO 742-2005 CONTRACTOR.



 Certificate of Authorization CH2M HILL Canada Ltd. No. 1441 Expiry: April 30, 2008	B.M. ELEV.	 Frederickson Cooper ARCHITECTS	 A Tyco International Ltd. Company	ENGINEER'S SEAL	 THE CITY OF WINNIPEG WATER AND WASTE DEPARTMENT ENGINEERING DIVISION				
				DESIGNED BY: MH		CHECKED BY: AP	ORIGINAL SIGNED BY: C. MILITANO		
				DRAWN BY: CR		APPROVED BY: AHL	2007/06/05		
				SCALE: 1:50		RELEASED FOR CONSTRUCTION BY: R. SOROKOWSKI	CONSULTANT DRAWING NO. WA-S4202		
	NO. REVISIONS	DATE	BY	DATE	2007/06/05	DATE	2007/05/06	WATER TREATMENT PLANT ADMINISTRATION OFFICE AND PLANT INTERIOR FINISHES	CITY FILE NUMBER
								STRUCTURAL ADMINISTRATION AREA SECTIONS AND DETAILS	SHEET OF CITY DRAWING NUMBER 1-0601A-A-S4202-001-000