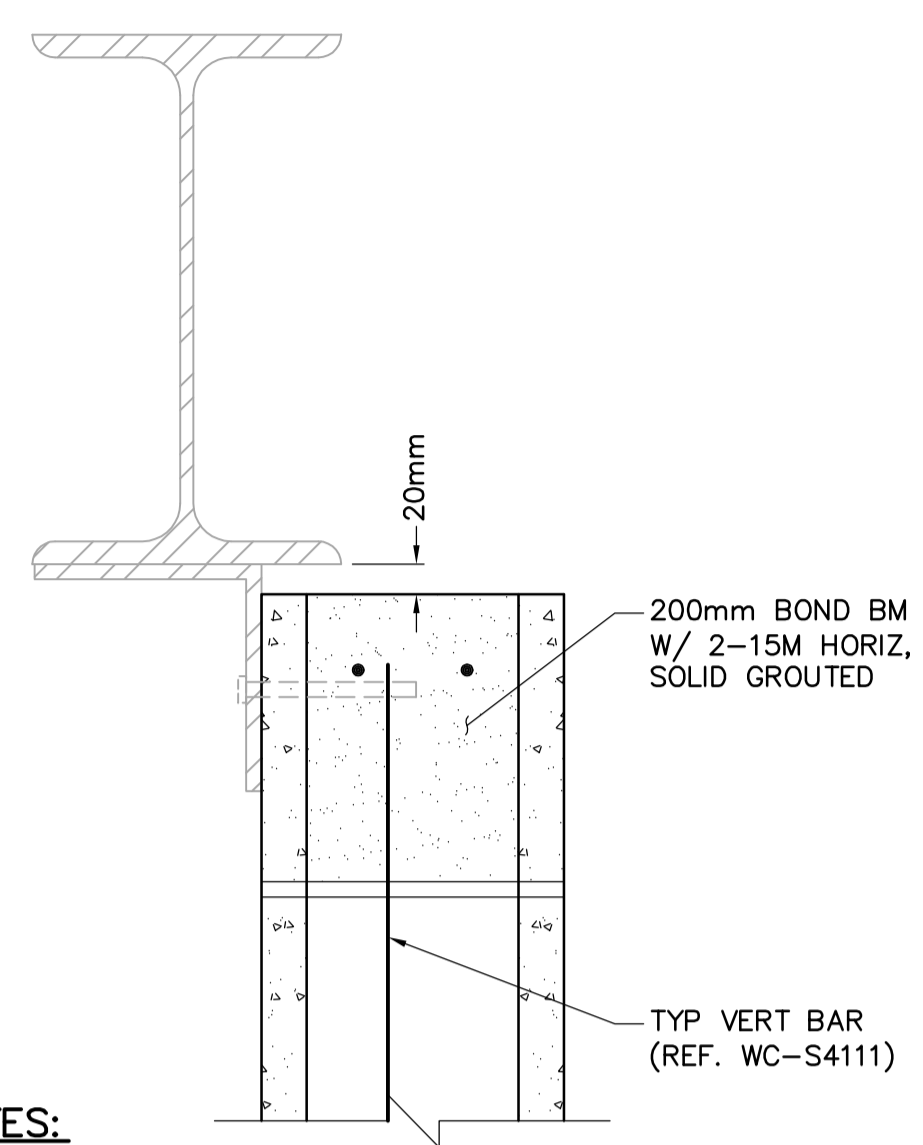
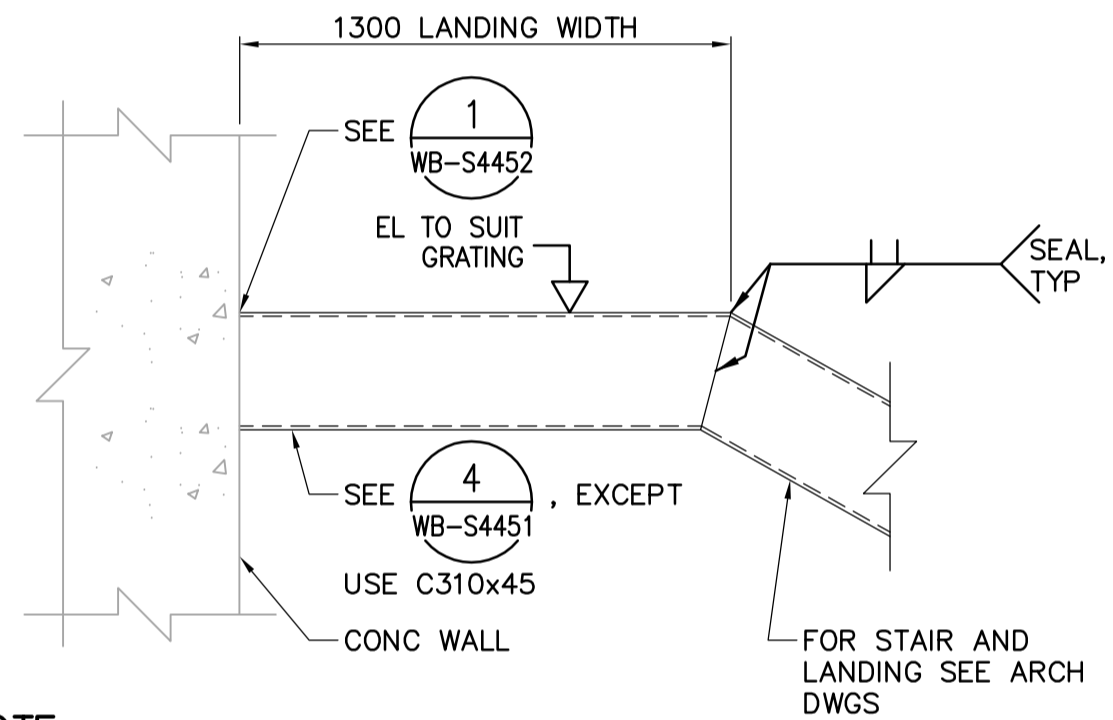


SECOND FLOOR PLAN
1:100

- NOTES:**
- FOR WALL CONTROL JOINTS SEE ARCHITECTURAL DRAWINGS.
 - SEE DETAIL **2** FOR OPENING REINFORCING.
WB-S4451
 - USE NO.9 ASWG@400 FOR JOINT REINFORCEMENT.
 - FOR DETAILS OF LINTELS, BOND BEAMS, AND CORE FILLS REFER TO **2** AND **3**.
WB-S4451 WB-S4451
 - COORDINATE EXACT DIMENSIONS AND LOCATIONS OF OPENINGS WITH B0 742-2005 CONTRACTOR.

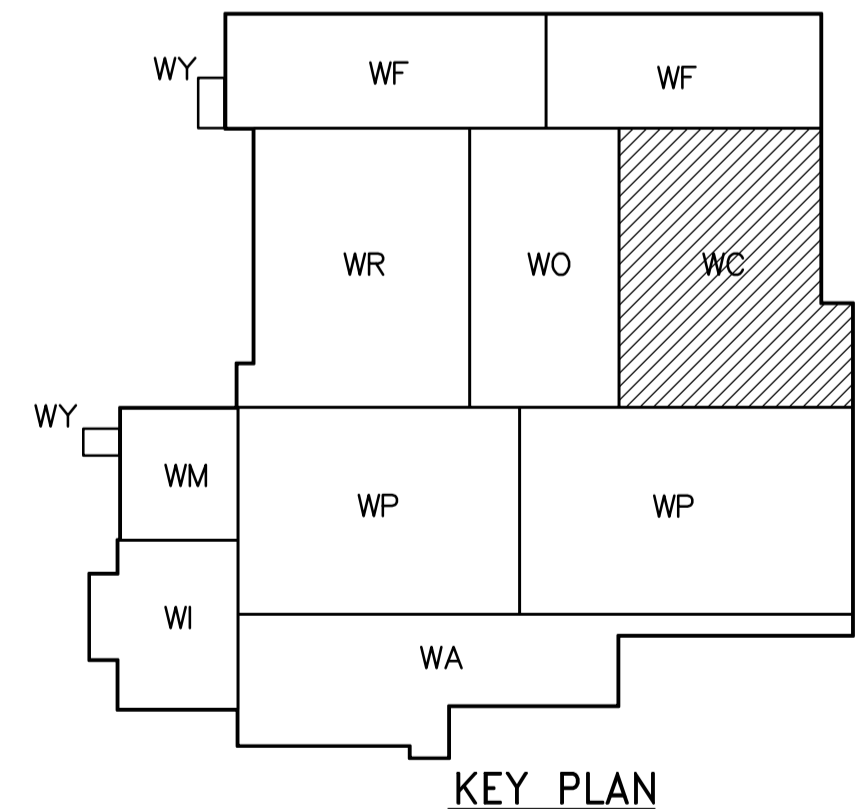


- NOTES:**
- BEAMS, ANGLES AND ACCESSORIES INSTALLED IN SEPARATE CONTRACT.
 - GRATING NOT SHOWN FOR CLARITY, SEE PLANS.

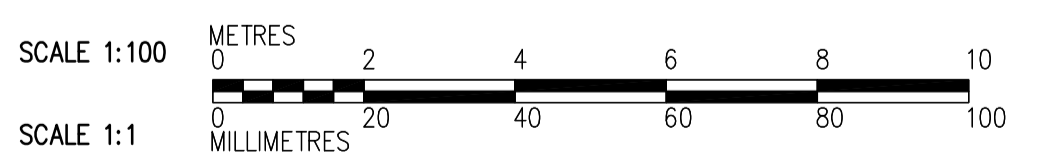


- NOTE:**
- GRATING NOT SHOWN FOR CLARITY, REFER TO STANDARD DETAILS.

1 DETAIL
1:20



KEY PLAN



 Certificate of Authorization CH2M HILL Canada Ltd. No. 1441 Expiry: April 30, 2008	B.M. ELEV.	 Frederickson Cooper ARCHITECTS	 A Tyco International Ltd. Company	ENGINEER'S SEAL	 THE CITY OF WINNIPEG WATER AND WASTE DEPARTMENT ENGINEERING DIVISION
				DESIGNED BY: EL CHECKED BY: AP DRAWN BY: CR APPROVED BY: AHL SCALE: 1:100 RELEASED FOR CONSTRUCTION BY: R. SOROKOWSKI	
00 ISSUED FOR TENDER 07/06/05 EL NO. REVISIONS DATE BY	DATE 2007/06/05	DATE 2007/05/06	DATE 2007/05/06	STRUCTURAL CHEMICAL AREA SECOND FLOOR PLAN, SECTION AND DETAIL	