

- GENERAL NOTES:**
1. BASE LINE IS CENTERLINE OF RIGHT OF WAY.
 2. EXPOSE ALL COMMUNICATION AND POWER DUCTS/LINES BY HYDROVAC EXCAVATION.
 3. EXPOSE ALL EXISTING UTILITIES AND RECORD THEM TO THE PLAN.
 4. INSTALL ALL PIPING UTILIZING TRENCHLESS INSTALLATION METHODS UNLESS OTHERWISE APPROVED OR DIRECTED BY THE CONTRACT ADMINISTRATOR.

BENCHMARK NOTES:

DRAWING COORDINATES ARE UTM NAD83 - SCALE FACTOR 0.99983

B.M. No.	NORTHING	EASTING	ELEVATION
PILE 136	5523873.734	647764.406	236.242
PILE 133	5523256.606	647782.387	236.056

NOTE:

A. LOCATION OF UNDERGROUND STRUCTURES AS SHOWN ARE BASED ON THE BEST INFORMATION AVAILABLE. BUT NO GUARANTEE IS GIVEN THAT ALL EXISTING UTILITIES ARE SHOWN OR THAT THE GIVEN LOCATIONS ARE EXACT. CONFIRMATION OF EXISTENCE AND EXACT LOCATION OF ALL SERVICES MUST BE OBTAINED FROM THE INDIVIDUAL UTILITIES BEFORE PROCEEDING WITH CONSTRUCTION.



EXISTING	LEGEND - PLAN	PROPOSED	EXISTING	LEGEND - PLAN	PROPOSED	EXISTING	LEGEND - PLAN	PROPOSED
150 mm W.M.	WATERMAIN	150 mm W.M.	HYDRO M.T.S.	CONCRETE	ASPHALT	PROPERTY LINE	SURVEY BAR	ELEVATION
300mm L.D.S.	LAND DRAINAGE SEWER	300mm L.D.S.	CONCRETE	ASPHALT	PROPERTY LINE	SURVEY BAR	ELEVATION	32.750
250mm W.W.S.	WASTEWATER SEWER	250mm W.W.S.	CONCRETE	ASPHALT	PROPERTY LINE	SURVEY BAR	ELEVATION	300ø
○	MANHOLE	●	○	VALVE	○	○	HYDRANT	○
□	CATCH BASIN	■	□	CATCH BASIN	□	□	CATCH BASIN	□
▽	CURB INLET	▽	▽	CURB INLET	▽	▽	CURB INLET	▽
+	JUNCTIONS	+	+	JUNCTIONS	+	+	JUNCTIONS	+
—	CULVERT	—	—	CULVERT	—	—	CULVERT	—
—	GAS	—	—	GAS	—	—	GAS	—
—	ANCHOR	—	—	ANCHOR	—	—	ANCHOR	—
—	POLE	—	—	POLE	—	—	POLE	—
—	CONTOURS	—	—	CONTOURS	—	—	CONTOURS	—
—	RAIL X-ING SIGNAL	—	—	RAIL X-ING SIGNAL	—	—	RAIL X-ING SIGNAL	—
—	DITCH	—	—	DITCH	—	—	DITCH	—

LOCATION APPROVED UNDERGROUND STRUCTURES

SUPV. U/G STRUCTURES COMMITTEE DATE

NOTE:

LOCATION OF UNDERGROUND STRUCTURES AS SHOWN ARE BASED ON THE BEST INFORMATION AVAILABLE. BUT NO GUARANTEE IS GIVEN THAT ALL EXISTING UTILITIES ARE SHOWN OR THAT THE GIVEN LOCATIONS ARE EXACT. CONFIRMATION OF EXISTENCE AND EXACT LOCATION OF ALL SERVICES MUST BE OBTAINED FROM THE INDIVIDUAL UTILITIES BEFORE PROCEEDING WITH CONSTRUCTION.

B.M. ELEV.	NO.	REVISIONS	DATE	BY
	00	ISSUED FOR TENDER	07/07/30	DA

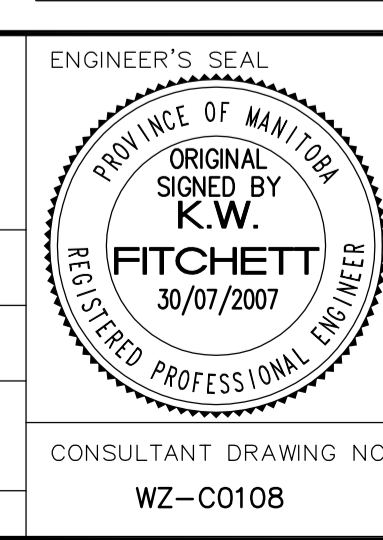
CH2MHILL
Frederickson Cooper ARCHITECTS

EarthTech
A Tyco International Ltd. Company

DESIGNED BY: KWF
DRAWN BY: MAF
SCALE: HORIZ. 1:500
VERT. 1:50

CHECKED BY: GK
APPROVED BY: AHL
RELEASED FOR CONSTRUCTION BY: R. SOROKOWSKI

DATE: 2005/12/09
DATE: 2007/7/30



THE CITY OF WINNIPEG
WATER AND WASTE DEPARTMENT
ENGINEERING DIVISION

Winnipeg

WATER TREATMENT PLANT
SUPPLY AND INSTALLATION
OF FORCEMAIN

CIVIL
MURDOCK ROAD
STA. 24+20 TO STA. 27+70

CITY FILE NUMBER
SHEET 9 OF 23
CITY DRAWING NUMBER
1-0601Z-C-C0108-001-00D

CONSULTANT DRAWING NO. WZ-C0108