

- GENERAL NOTES:**
1. BASE LINE IS SOUTH LIMIT OF RIGHT OF WAY.
  2. EXPOSE ALL COMMUNICATION AND POWER DUCTS/LINES BY HYDROVAC EXCAVATION.
  3. BACKFILL IN OPEN CUT TRENCHES SHALL BE CLASS 4 BACKFILL WITH CLASS B BEDDING, BACKFILL UNDER OR WITHIN 1.0m OF ROADWAY SHALL BE CLASS 2 BACKFILL WITH CLASS B BEDDING EXCEPT AS NOTED.

**BENCHMARK NOTES:**

DRAWING COORDINATES ARE UTM NAD83 - SCALE FACTOR 0.99983

| B.M. No. | NORTHING    | EASTING    | ELEVATION |
|----------|-------------|------------|-----------|
| PILE 136 | 5523873.734 | 647764.406 | 236.242   |
| PILE 133 | 5523256.606 | 647782.387 | 236.056   |

**NOTE:**

A. LOCATION OF UNDERGROUND STRUCTURES AS SHOWN ARE BASED ON THE BEST INFORMATION AVAILABLE, BUT NO GUARANTEE IS GIVEN THAT ALL EXISTING UTILITIES ARE SHOWN OR THAT THE GIVEN LOCATIONS ARE EXACT. CONFIRMATION OF EXISTENCE AND EXACT LOCATION OF ALL SERVICES MUST BE OBTAINED FROM THE INDIVIDUAL UTILITIES BEFORE PROCEEDING WITH CONSTRUCTION.



| EXISTING     | LEGEND - PLAN       | PROPOSED     | EXISTING      | LEGEND - PLAN     | PROPOSED | EXISTING | LEGEND - PLAN     | PROPOSED      |
|--------------|---------------------|--------------|---------------|-------------------|----------|----------|-------------------|---------------|
| 150 mm W.M.  | WATERMAIN           | 150 mm W.M.  | HYDRO         | M.T.S.            | ---      | ---      | LIGHT STANDARD    | ANCHOR        |
| 300mm L.D.S. | LAND DRAINAGE SEWER | 300mm L.D.S. | CONCRETE      | ASPHALT           | ---      | ---      | POLE              | CONTOURS      |
| 250mm W.W.S. | WASTEWATER SEWER    | 250mm W.W.S. | PROPERTY LINE | SURVEY BAR        | ---      | ---      | RAIL X-ING SIGNAL | RAILWAY TRACK |
| ---          | MANHOLE             | ---          | ELEVATION     | TREE              | ---      | ---      | DITCH             | ---           |
| ---          | CATCH BASIN         | ---          | ANODE         | CONCRETE SIDEWALK | ---      | ---      | ---               | ---           |
| ---          | CURB INLET          | ---          | FENCE         | ---               | ---      | ---      | ---               | ---           |
| ---          | JUNCTIONS           | ---          | ---           | ---               | ---      | ---      | ---               | ---           |
| ---          | CULVERT             | ---          | ---           | ---               | ---      | ---      | ---               | ---           |
| ---          | GAS                 | ---          | ---           | ---               | ---      | ---      | ---               | ---           |

**LOCATION APPROVED UNDERGROUND STRUCTURES**

SUPV. U/G STRUCTURES DATE COMMITTEE

**NOTE:**

LOCATION OF UNDERGROUND STRUCTURES AS SHOWN ARE BASED ON THE BEST INFORMATION AVAILABLE, BUT NO GUARANTEE IS GIVEN THAT ALL EXISTING UTILITIES ARE SHOWN OR THAT THE GIVEN LOCATIONS ARE EXACT. CONFIRMATION OF EXISTENCE AND EXACT LOCATION OF ALL SERVICES MUST BE OBTAINED FROM THE INDIVIDUAL UTILITIES BEFORE PROCEEDING WITH CONSTRUCTION.

| NO. | REVISIONS         | DATE     | BY |
|-----|-------------------|----------|----|
| 00  | ISSUED FOR TENDER | 07/07/30 | DA |

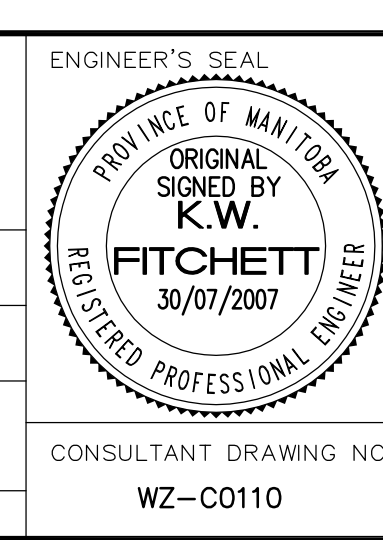
**CH2MHILL**  
Frederickson Cooper ARCHITECTS

**EarthTech**  
A Tyco International Ltd. Company

DESIGNED BY: KWF  
DRAWN BY: MAF  
SCALE: HORZ. 1:500  
VERT. 1:50

CHECKED BY: GK  
APPROVED BY: AHL  
RELEASED FOR CONSTRUCTION BY: R. SOROKOWSKI

DATE: 2005/12/09  
DATE: 2007/7/30



**THE CITY OF WINNIPEG**  
WATER AND WASTE DEPARTMENT  
ENGINEERING DIVISION

Winnipeg

WATER TREATMENT PLANT  
SUPPLY AND INSTALLATION  
OF FORCEMAIN

CIVIL  
GWWD AQUEDUCT R.O.W.  
MURDOCK ROAD TO STA. 2+90

CITY FILE NUMBER  
SHEET 11 OF 22  
CITY DRAWING NUMBER  
1-0601Z-C-C010-001-00D