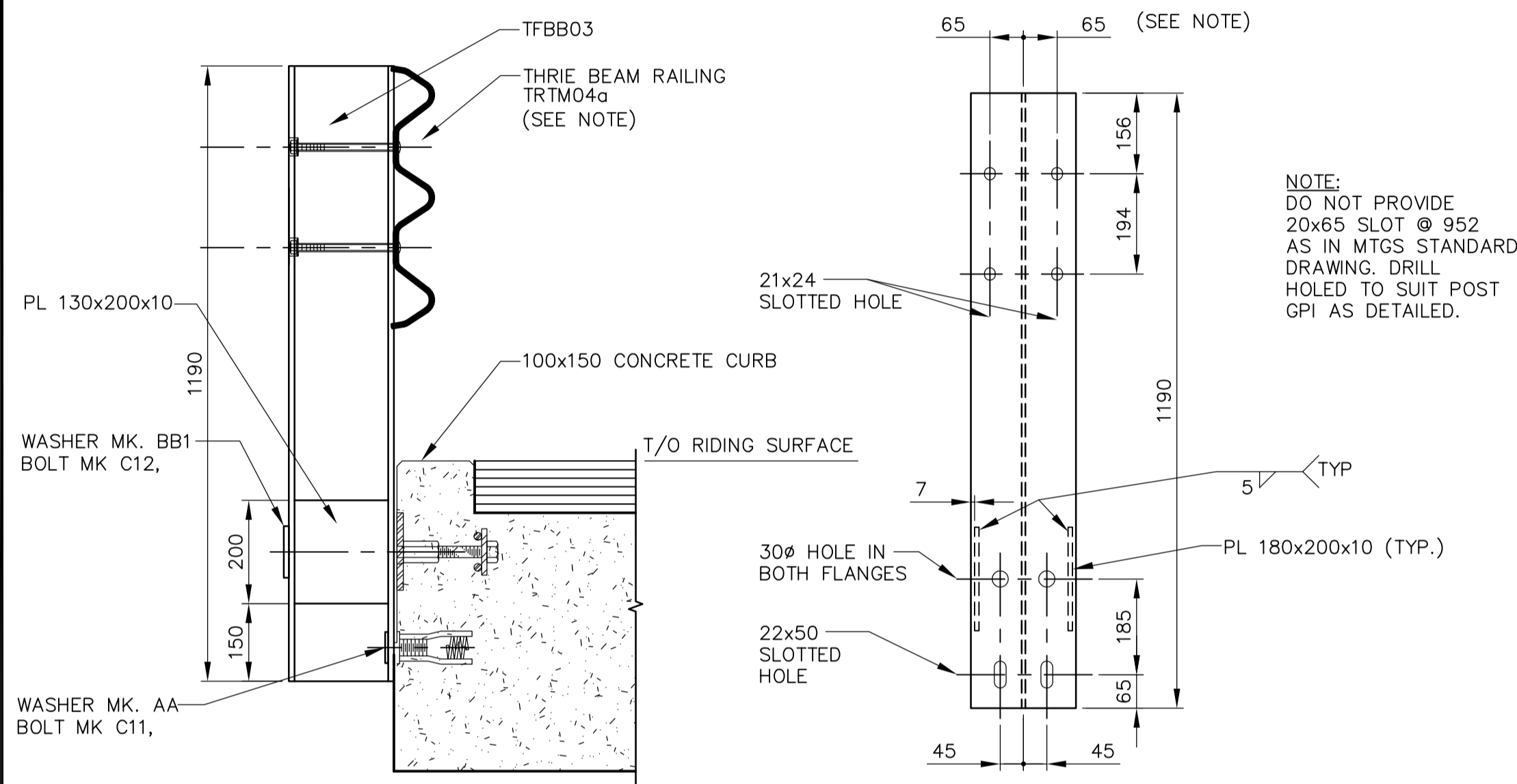


BRIDGE GUARDRAIL LAYOUT
SCALE 1:50

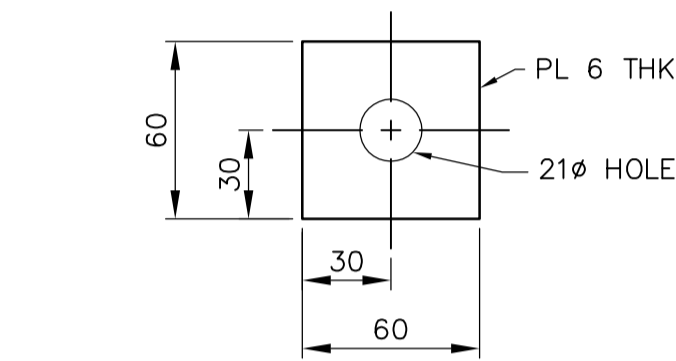
| BILL OF MISCELLANEOUS METAL FOR BRIDGE RAILING | | | |
|--|-----|---|---------------------------------|
| MK. | NO. | DESCRIPTION | SIZE |
| GP1 | 18 | RAILPOST - GALVANIZED | W200x46, 1190 LONG AS DETAILED |
| AA | 3b | WASHER - GALVANIZED | AS DETAILED |
| BB1 | 18 | WASHER - GALVANIZED | AS DETAILED |
| * | U1 | RAILPOST ANCHOR UNIT-COMPLETLY GALVANIZED | |
| | | EACH UNIT TO BE FABRICATED FROM: | |
| | | PLATE | 1-PL150x250x12 |
| | | HEX. COUPLING UNIT | 2-22#x63.5mm LG. BOLT |
| * | E1 | ANCHOR PLATE-COMPLETLY GALVANIZED | |
| | | EACH UNIT TO BE FABRICATED FROM: | |
| | | PLATE | 1-PL. 10x90x150 LG. AS DETAILED |
| | | BARS | 2-15Mx900 LG. DEFORMED BARS |
| C11 | 36 | HEAVY HEX. BOLT (A325) | 19#x55 LG. NO NUT, GALVANIZED |
| C12 | 36 | HEAVY HEX. BOLT (A325) | 22#x215 LG. NO NUT, GALVANIZED |
| * | R22 | HEAVY HEX. BOLT (A325) | 22#x125 LG. NO NUT, GALVANIZED |
| | 36 | LOCK WASHERS | ONE REQ'D PER C12, GALVANIZED |
| | 36 | LOCK WASHERS | ONE REQ'D PER C11, GALVANIZED |

| BILL OF REINFORCING STEEL | | | |
|---------------------------------|-----|--------|-----------|
| MK. | NO. | LENGTH | MASS (kg) |
| D1001 | 4 | 4500 | 18 |
| D1002 | 64 | 350 | 14 |
| TOTAL MASS OF REINFORCING STEEL | | | 32 kg |

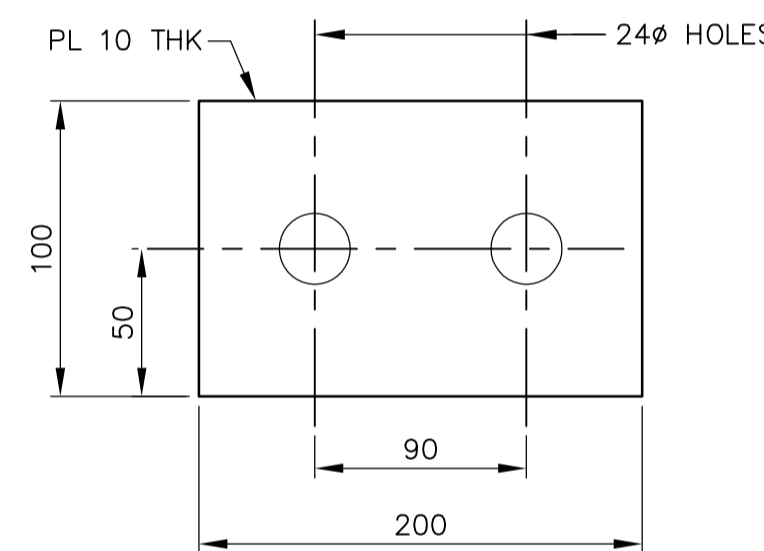
ITEMS MARKED * HAVE BEEN INSTALLED IN PREVIOUS CONTRACT



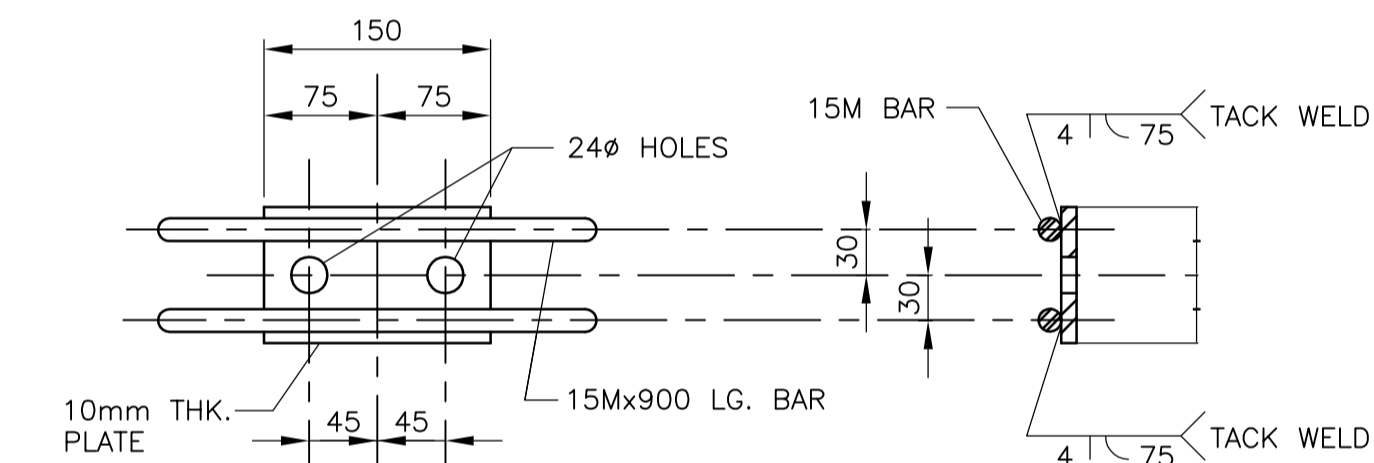
RAIL POST MK. GP1
SCALE 1:10



WASHER MK AA

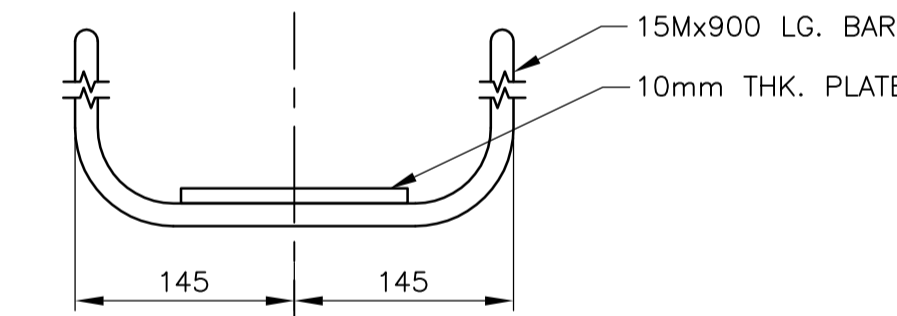


WASHER MK BB1
SCALE 1:5



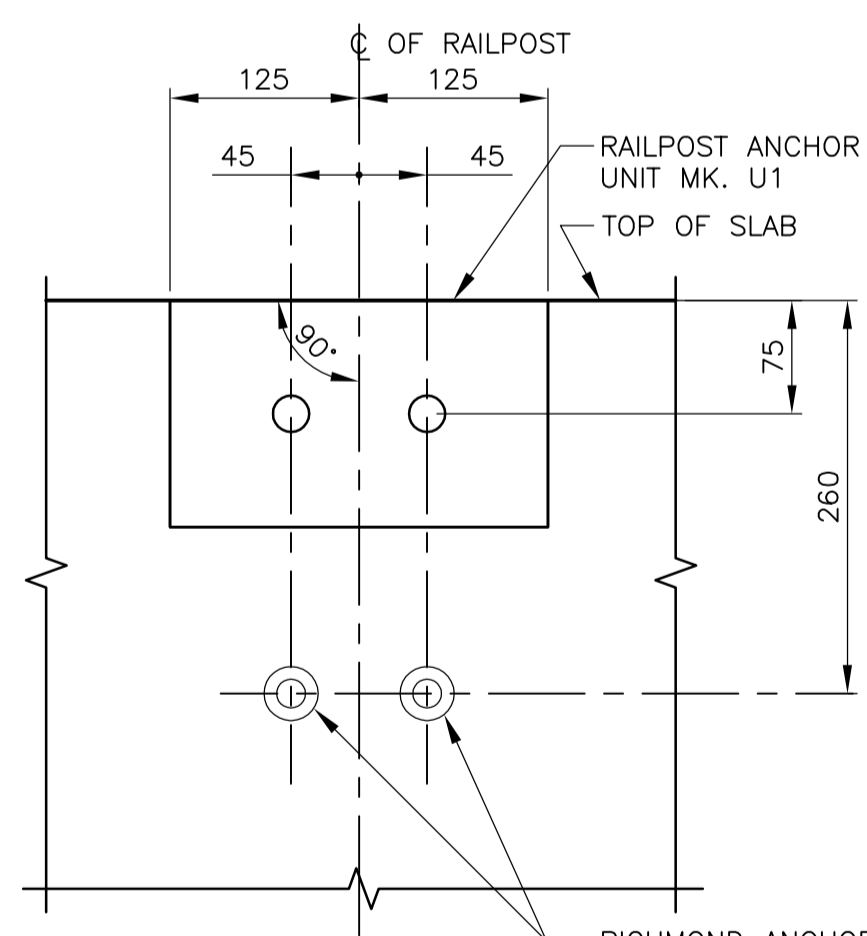
ELEVATION

SIDE VIEW

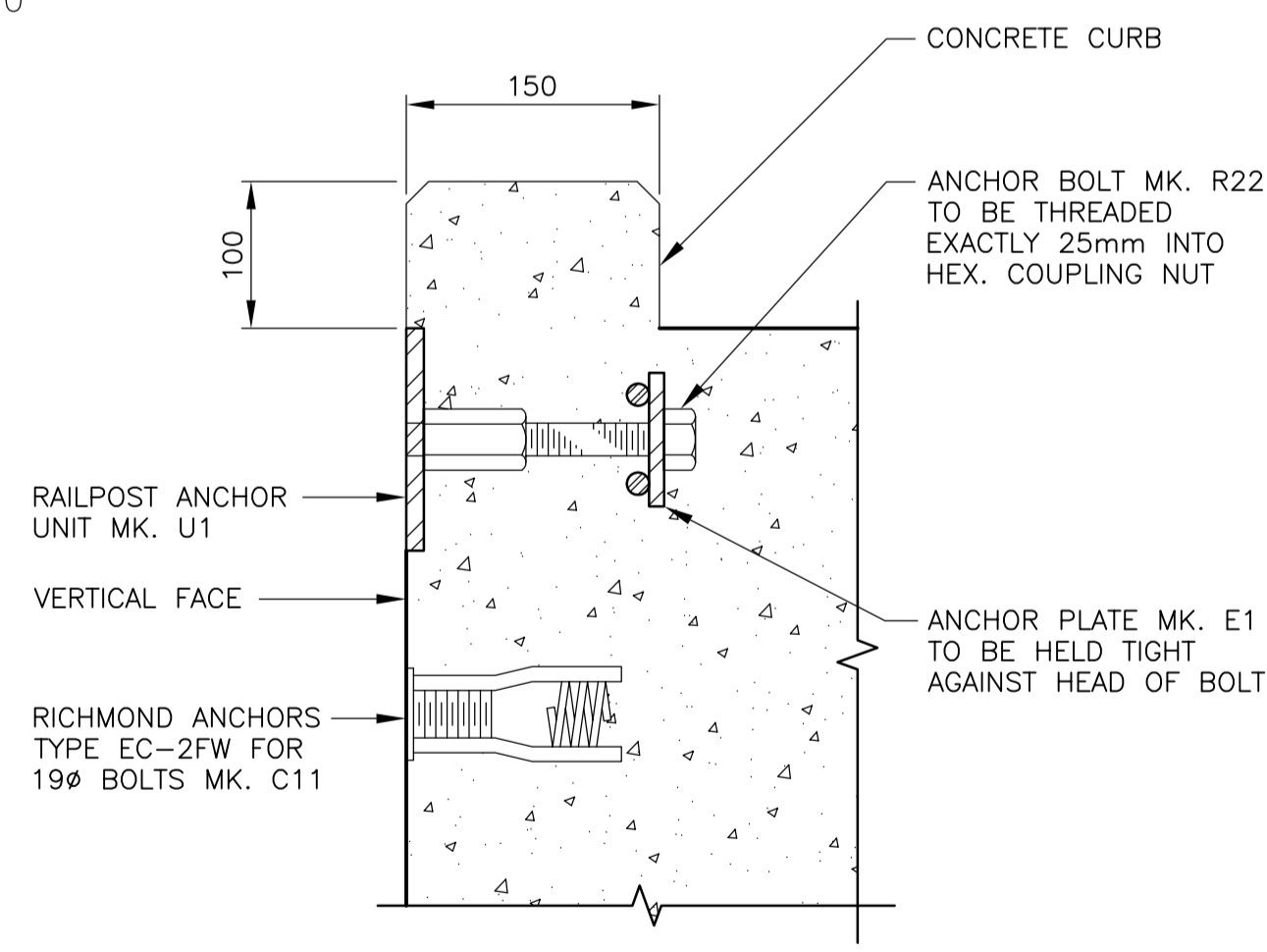


PLAN

ANCHOR PLATE MK. E1-GALVANIZED
SCALE 1:5

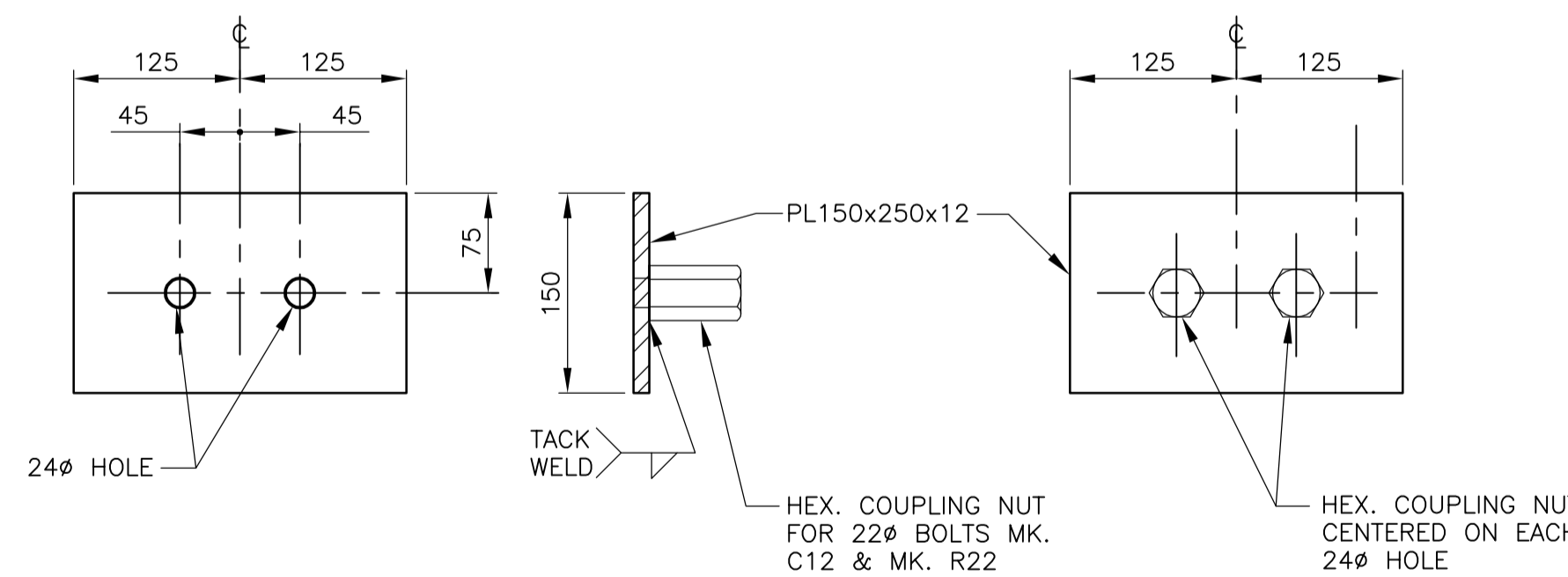


ELEVATION



SECTION

GUARD POST INSERT DETAILS
SCALE 1:5

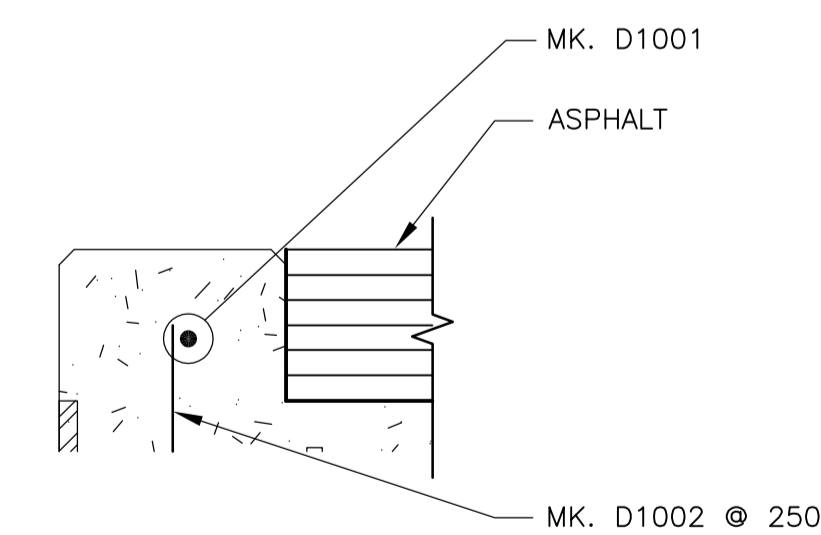


FRONT VIEW

SIDE VIEW

REAR VIEW

RAILPOST ANCHOR UNIT MK. U1-GALVANIZED
SCALE 1:5



CURB REINFORCING STEEL
SCALE 1:5

| | | | | | | | | | |
|--|---------------|------|----|-----------------|----------|---|---------------------------------|---|---|
| | B.M. ELEV. | | | ENGINEER'S SEAL | | | | | |
| | | | | DESIGNED BY AP | | CHECKED BY EBL | ORIGINAL SIGNED BY E.B. LOEWEN | | |
| | | | | DRAWN BY KC | | APPROVED BY DT | 06/02/06 | | |
| | | | | SCALE: AS NOTED | | RELEASED FOR CONSTRUCTION BY: R. SOROKOWSKI | CONSULTANT DRAWING NO. WN-S0484 | | |
| | NO. REVISIONS | DATE | BY | DATE | 06/02/06 | DATE | 06/02/06 | WATER TREATMENT PLANT CONSTRUCTION OF ROADS AND LANDSCAPING | CITY FILE NUMBER |
| | | | | | | | | STRUCTURAL MIDDLE BRIDGE APPROACH SLAB DETAILS | SHEET OF |
| | | | | | | | | | CITY DRAWING NUMBER I-0601N-A-S0484-001-02D |