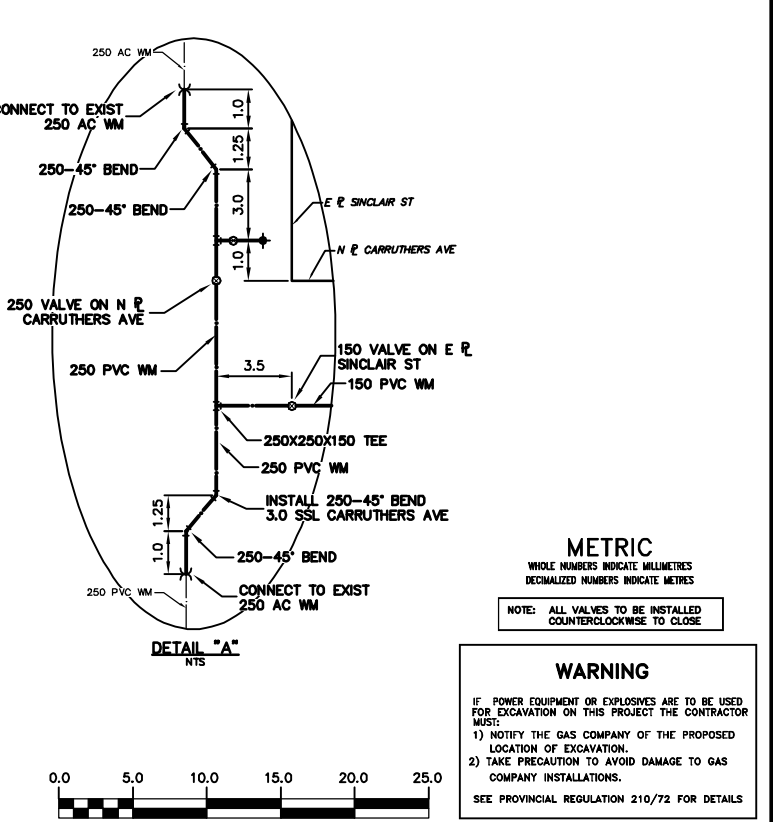
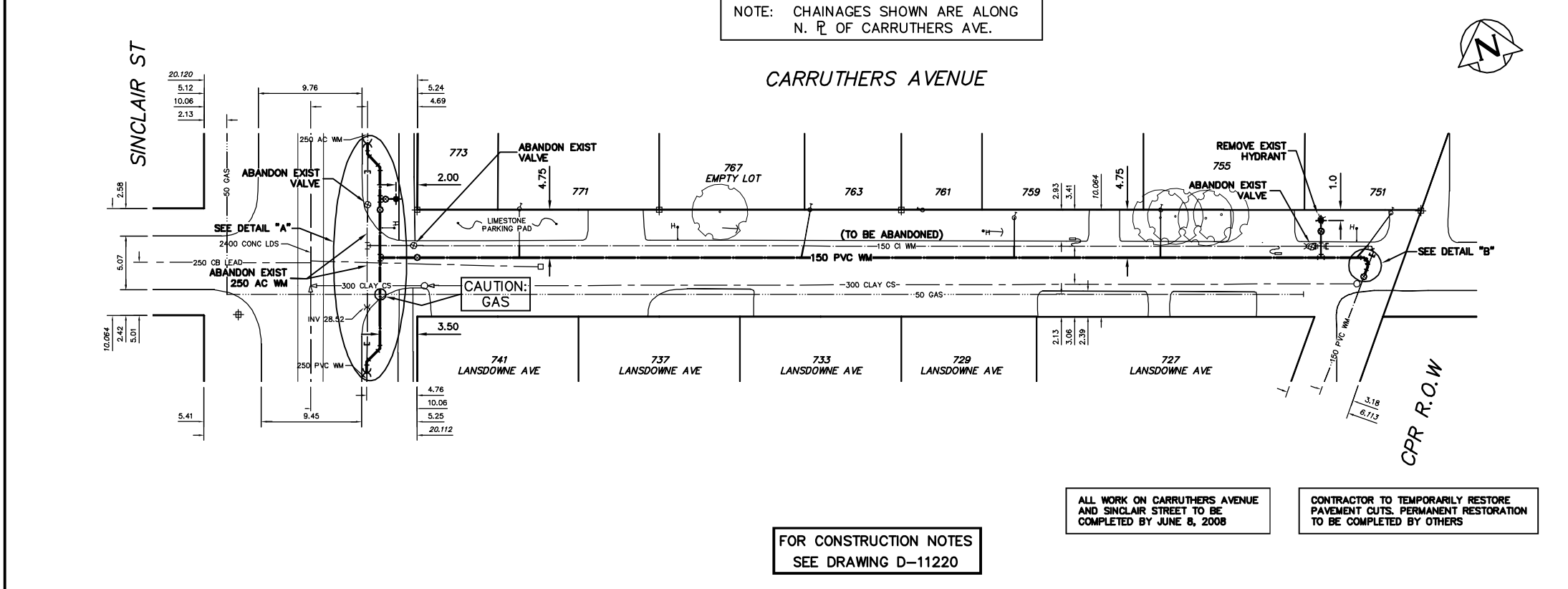


WATER SERVICE INFORMATION					
ADDRESS	SIZE(mm) & TYPE (STREET)	SIZE(mm) & TYPE (PROP)	SHORT & LONG MEASUREMENT	CORP. LOCATION	REMARKS
751 CARRUTHERS AVE	20 COPPER	-	2.11 EWL HSE	2.0 W OF S/C	-
753 CARRUTHERS AVE	20 COPPER	-	0.40 EWL HSE	OPP S/C	-
759 CARRUTHERS AVE	20 COPPER	-	1.01 EWL HSE	OPP S/C	-
761 CARRUTHERS AVE	20 COPPER	-	56.29 EEL SINCLAIR	-	-
763 CARRUTHERS AVE	20 COPPER	-	1.50 EWL HSE	-	-
767 CARRUTHERS AVE	20 COPPER	-	46.65 EEL SINCLAIR	-	-
771 CARRUTHERS AVE	20 COPPER	-	1.33 WWL HSE	0.55 W OF S/C	-
773 CARRUTHERS AVE	20 COPPER	-	37.01 EEL SINCLAIR	-	-
775 CARRUTHERS AVE	20 COPPER	-	-	-	NO SERVICE INFORMATION AVAILABLE
777 CARRUTHERS AVE	20 COPPER	-	1.14 EWL HSE	-	EXACT CORP LOCATION UNKNOWN
779 CARRUTHERS AVE	20 COPPER	-	9.64 EEL SINCLAIR	-	SERVICED OFF SINCLAIR
781 CARRUTHERS AVE	20 COPPER	-	3.56 NSL HSE	-	-
783 CARRUTHERS AVE	20 COPPER	-	19.08 NNL CARRUTHERS	-	-

NOTE: 727, 729, 733, 737, 741 LANSDOWNE AVE ARE SERVICED OFF LANSDOWNE AVE.

* SERVICES TO BE RENEWED TO R UPON CONFIRMATION BY THE CONTRACTOR OF EXISTING 1/2" COPPER OR LEAD SERVICE. OBTAIN APPROVAL FROM CONTRACT ADMINISTRATOR PRIOR TO RENEWAL.



200 WM	WATERMAIN	200 WM	SL, HYDRO	150 WM	WATERMAIN	150 WM
+	HYDRANT	+	MTS	+	HYDRANT	+
⊙	VALVE	⊙	TRAFFIC SIGNALS	+	VALVE	+
525 LDS	LAND DRAINAGE SEWER	525 LDS	GAS	50 GAS	300 LDS	LAND DRAINAGE SEWER
375 WWS	WASTEWATER SEWER	375 WWS	SURVEY BAR	250 WWS	250 WWS	WASTEWATER SEWER
○	MANHOLE	●	FENCE	—	—	PROFILE
□	CATCH BASIN	■	POLE - HYDRO, MTS	—	—	GROUND ABOVE PIPE
▽	CURB INLET	▽	CURB STOP	—	—	☉ DITCH (NORTH & WEST)
◁	REDUCER	◁	GUY ANCHOR	—	—	☉ DITCH (SOUTH & EAST)
X	COUPLER	X	LIGHT STANDARD	—	—	GUTTER (NORTH & WEST)
⊕	ANODE	⊕	TREE	—	—	GUTTER (SOUTH & EAST)
EXISTING	LEGEND-PLAN	PROPOSED	EXISTING	LEGEND-PLAN	PROPOSED	EXISTING
EXISTING	LEGEND-PROFILE	PROPOSED	EXISTING	LEGEND-PROFILE	PROPOSED	EXISTING

LOCATION APPROVED UNDERGROUND STRUCTURES		B.M. ELEV.	FIELD BOOK #
SUPV. U/G STRUCTURES COMMITTEE	DATE		
NOTE: LOCATION OF UNDERGROUND STRUCTURES AS SHOWN ARE BASED ON THE BEST INFORMATION AVAILABLE BUT NO GUARANTEE IS GIVEN THAT ALL EXISTING UTILITIES ARE SHOWN OR THAT THE GIVEN LOCATIONS ARE EXACT. CONFIRMATION OF EXISTENCE AND EXACT LOCATION OF ALL SERVICES MUST BE OBTAINED FROM THE INDIVIDUAL UTILITIES BEFORE PROCEEDING WITH CONSTRUCTION.			
NO.	REVISIONS	DATE	BY

CITY OF WINNIPEG WATER AND WASTE ENGINEERING DIVISION

DESIGNED BY: MEK
CHECKED BY: NC
DRAWN BY: CJH
APPROVED BY: KZ

HOR. SCALE: 1:250
VERTICAL SCALE: 1:50
DATE: 2008 03 03

ENGINEER'S SEAL
ORIGINAL SIGNED BY K.R. ZUREK 08/03/03

THE CITY OF WINNIPEG WATER AND WASTE DEPARTMENT

2008 WATERMAIN RENEWALS CONTRACT 3
CARRUTHERS AVENUE
SINCLAIR STREET TO CPR R.O.W.

SHEET 1 OF 9
CITY DRAWING NUMBER D-11217

FILENAME: D-11217.dwg
PLOT DATE: 2008 03 03

FOR CONSTRUCTION NOTES SEE DRAWING D-11220

ALL WORK ON CARRUTHERS AVENUE AND SINCLAIR STREET TO BE COMPLETED BY JUNE 8, 2008

CONTRACTOR TO TEMPORARILY RESTORE PAVEMENT CUTS. PERMANENT RESTORATION TO BE COMPLETED BY OTHERS

WARNING
IF POWER EQUIPMENT OR EXPLOSIVES ARE TO BE USED FOR EXCAVATION ON THIS PROJECT THE CONTRACTOR MUST:
1) NOTIFY THE GAS COMPANY OF THE PROPOSED LOCATION OF EXCAVATION.
2) TAKE PRECAUTION TO AVOID DAMAGE TO GAS COMPANY INSTALLATIONS.
SEE PROVINCIAL REGULATION 210/72 FOR DETAILS