

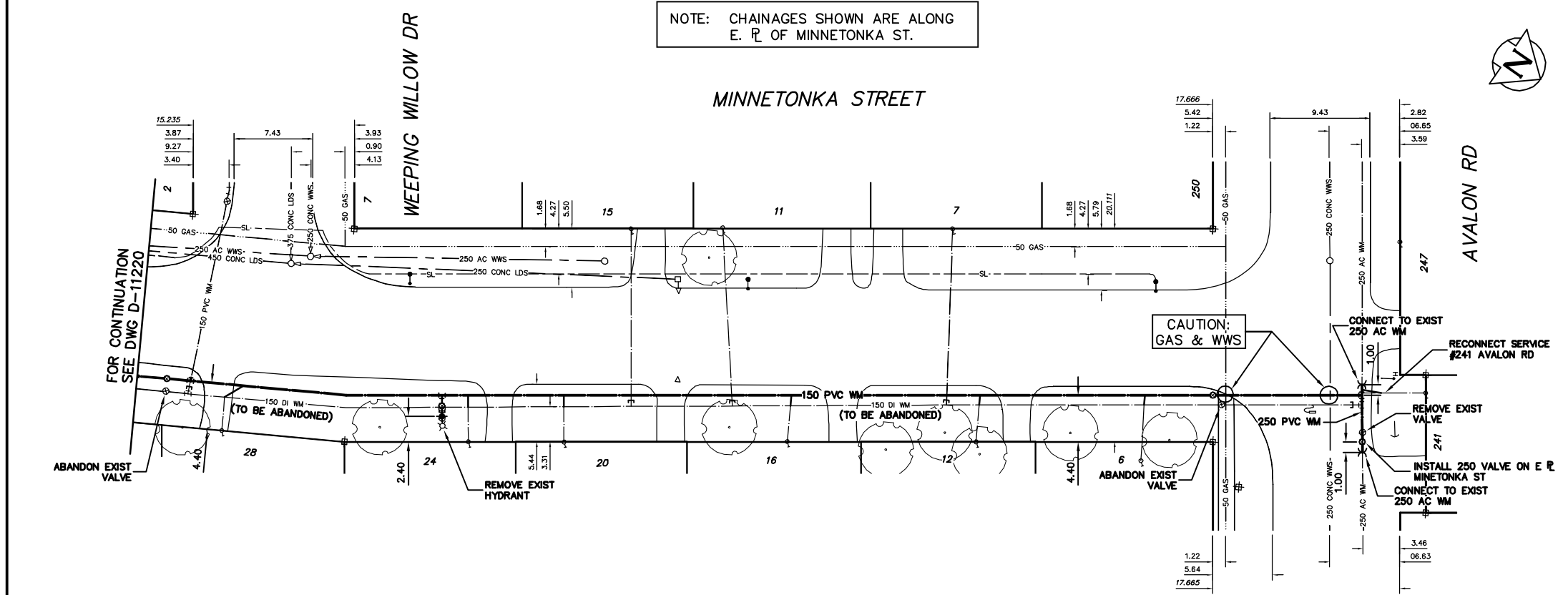
- CONSTRUCTION NOTES**
1. EXPOSE EXISTING WATERMAIN & CONFIRM INVERTS PRIOR TO CONSTRUCTION.
 2. CONFIRM LOCATION OF ALL SERVICES IN THE FIELD.
 3. INSTALL WATERMAIN BY TRENCHLESS METHODS.
 4. TRENCHES AND EXCAVATIONS WITHIN 1 METRE OF A PAVED AREA INCLUDING SIDEWALKS SHALL BE CLASS 3 BACKFILL.
 5. ALL MATERIALS SHALL CONFORM TO THE CITY OF WINNIPEG STANDARD CONSTRUCTION SPECIFICATIONS.
 6. MINIMUM COVER TO TOP OF WATERMAIN SHALL BE 2.4 m.
 7. REPLACE ALL EXISTING LEAD SERVICES FROM PROPOSED WATERMAIN TO R.
 8. NOTIFY ALL AFFECTED RESIDENTS AND BUSINESSES 24 HOURS IN ADVANCE OF ANY WATER SHUTDOWNS OR DISRUPTION OF SERVICE.
 9. EXCAVATIONS TO BE LOCATED AWAY FROM EXISTING TREE'S.

NOTE: CHAINAGES SHOWN ARE ALONG E. R. OF MINNETONKA ST.

WATER SERVICE INFORMATION

ADDRESS	SIZE(mm) & TYPE (STREET)	SIZE(mm) & TYPE (PROP)	SHORT & LONG MEASUREMENT	CORP. LOCATION	REMARKS
6 MINNETONKA ST	20	20	4.21 SNL HSE	0.35 N OF S/C	S/C 1.70 INTO R
RESIDENTIAL	COPPER	COPPER	6.15 SSL AVALON		
7 MINNETONKA ST	20	20	4.68 NSL HSE	0.6 S OF S/C	
RESIDENTIAL	COPPER	COPPER	24.53 SSL AVALON		
11 MINNETONKA ST	20	20	0.78 NSL HSE	0.9 N OF S/C	
RESIDENTIAL	COPPER	COPPER	45.77 SSL AVALON		
12 MINNETONKA ST	20	20	2.43 SNL HSE		
RESIDENTIAL	COPPER	COPPER	22.41 SSL AVALON		
15 MINNETONKA ST	20	20	4.55 SNL HSE	OPP S/C	
RESIDENTIAL	COPPER	COPPER	26.12 NNL WEeping WILLOW		
16 MINNETONKA ST	20	20	3.68 SNL HSE	0.35 N OF S/C	
RESIDENTIAL	COPPER	COPPER	39.87 SSL AVALON		
20 MINNETONKA ST	20	20	3.19 NSL HSE		EXACT CORP LOCATION UNKNOWN
RESIDENTIAL	COPPER	COPPER	19.84 NNL WEeping WILLOW		
24 MINNETONKA ST	20	20	1.24 SNL HSE		EXACT CORP LOCATION UNKNOWN
RESIDENTIAL	COPPER	COPPER	10.77 NNL WEeping WILLOW		
25 MINNETONKA ST	20	20	2.36 NSL HSE		EXACT CORP LOCATION UNKNOWN
RESIDENTIAL	COPPER	COPPER	2.77 NSL WEeping WILLOW		
241 AVALON RD	20	20	0.76 EWL HSE		EXACT CORP LOCATION UNKNOWN
RESIDENTIAL	COPPER	COPPER	4.60 SNL MINNETONKA		
247 AVALON RD	20	20	5.11 WEI HSE		
RESIDENTIAL	COPPER	COPPER	1.18 NSL MINNETONKA		
250 AVALON RD	20	20	1.83 WEI HSE	0.92 W OF S/C	
RESIDENTIAL	COPPER	COPPER	10.18 SSL MINNETONKA		
2 WEeping WILLOW DR	20	20	3.01 WEI HSE	5.0 E OF S/C	
RESIDENTIAL	COPPER	COPPER	9.25 SSL MINNETONKA		
7 WEeping WILLOW DR	20	20	2.02 EWL HSE	0.9 W OF S/C	
RESIDENTIAL	COPPER	COPPER	18.81 SSL MINNETONKA		

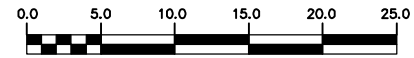
* SERVICES TO BE RENEWED TO R UPON CONFIRMATION BY THE CONTRACTOR OF EXISTING 1/2" COPPER OR LEAD SERVICE. OBTAIN APPROVAL FROM CONTRACT ADMINISTRATOR PRIOR TO RENEWAL.



METRIC

WHOLE NUMBERS INDICATE MILLIMETRES
DECIMALIZED NUMBERS INDICATE METRES

NOTE: ALL VALVES TO BE INSTALLED CLOCKWISE TO CLOSE



WARNING

IF POWER EQUIPMENT OR EXPLOSIVES ARE TO BE USED FOR EXCAVATION ON THIS PROJECT THE CONTRACTOR MUST:
1) NOTIFY THE GAS COMPANY OF THE PROPOSED LOCATION OF EXCAVATION.
2) TAKE PRECAUTION TO AVOID DAMAGE TO GAS COMPANY INSTALLATIONS.
SEE PROVINCIAL REGULATION 210/72 FOR DETAILS

EXISTING	LEGEND-PLAN	PROPOSED	EXISTING	LEGEND-PLAN	PROPOSED	EXISTING	LEGEND-PROFILE	PROPOSED
200 WM	WATERMAIN	200 WM	SL, HYDRO	150 WM	WATERMAIN	150 WM		
⊕	HYDRANT	⊕	MTS	+	HYDRANT	+		
⊙	VALVE	⊙	TRAFFIC SIGNALS	+	VALVE	+		
525 LDS	LAND DRAINAGE SEWER	525 LDS	50 GAS	50 GAS	300 LDS	LAND DRAINAGE SEWER	300 LDS	
375 WWS	WASTEWATER SEWER	375 WWS	SURVEY BAR	250 WWS	WASTEWATER SEWER	250 WWS		
○	MANHOLE	●	FENCE	⊕	PROFILE	⊕		
□	CATCH BASIN	■	POLE - HYDRO, MTS	⊕	GROUND ABOVE PIPE	⊕		
▽	CURB INLET	▽	CURB STOP	⊕	⊕ DITCH (NORTH & WEST)	⊕		
▽	REDUCER	▽	GUY ANCHOR	⊕	⊕ DITCH (SOUTH & EAST)	⊕		
X	COUPLER	X	LIGHT STANDARD	⊕	GUTTER (NORTH & EAST)	⊕		
⊕	ANODE	⊕	TREE	⊕	GUTTER (SOUTH & EAST)	⊕		

LOCATION APPROVED UNDERGROUND STRUCTURES

SUPV. U/G STRUCTURES COMMITTEE DATE

NOTE:
LOCATION OF UNDERGROUND STRUCTURES AS SHOWN ARE BASED ON THE BEST INFORMATION AVAILABLE BUT NO GUARANTEE IS GIVEN THAT ALL EXISTING UTILITIES ARE SHOWN OR THAT THE GIVEN LOCATIONS ARE EXACT. CONFIRMATION OF EXISTENCE AND EXACT LOCATION OF ALL SERVICES MUST BE OBTAINED FROM THE INDIVIDUAL UTILITIES BEFORE PROCEEDING WITH CONSTRUCTION.

NO.	REVISIONS	DATE	BY

CITY OF WINNIPEG WATER AND WASTE ENGINEERING DIVISION

DESIGNED BY DB CHECKED BY NC
DRAWN BY CJH APPROVED BY KZ

HOR. SCALE 1:250
VERTICAL SCALE 1:50

RELEASED FOR CONSTRUCTION
DATE 2008 03 03

ENGINEER'S SEAL
ORIGINAL SIGNED BY K.R. ZUREK 08/03/03

THE CITY OF WINNIPEG WATER AND WASTE DEPARTMENT

2008 WATERMAIN RENEWALS CONTRACT 3
MINNETONKA STREET
WEeping WILLOW DRIVE TO AVALON ROAD

SHEET 5 OF 9
CITY DRAWING NUMBER D-11221