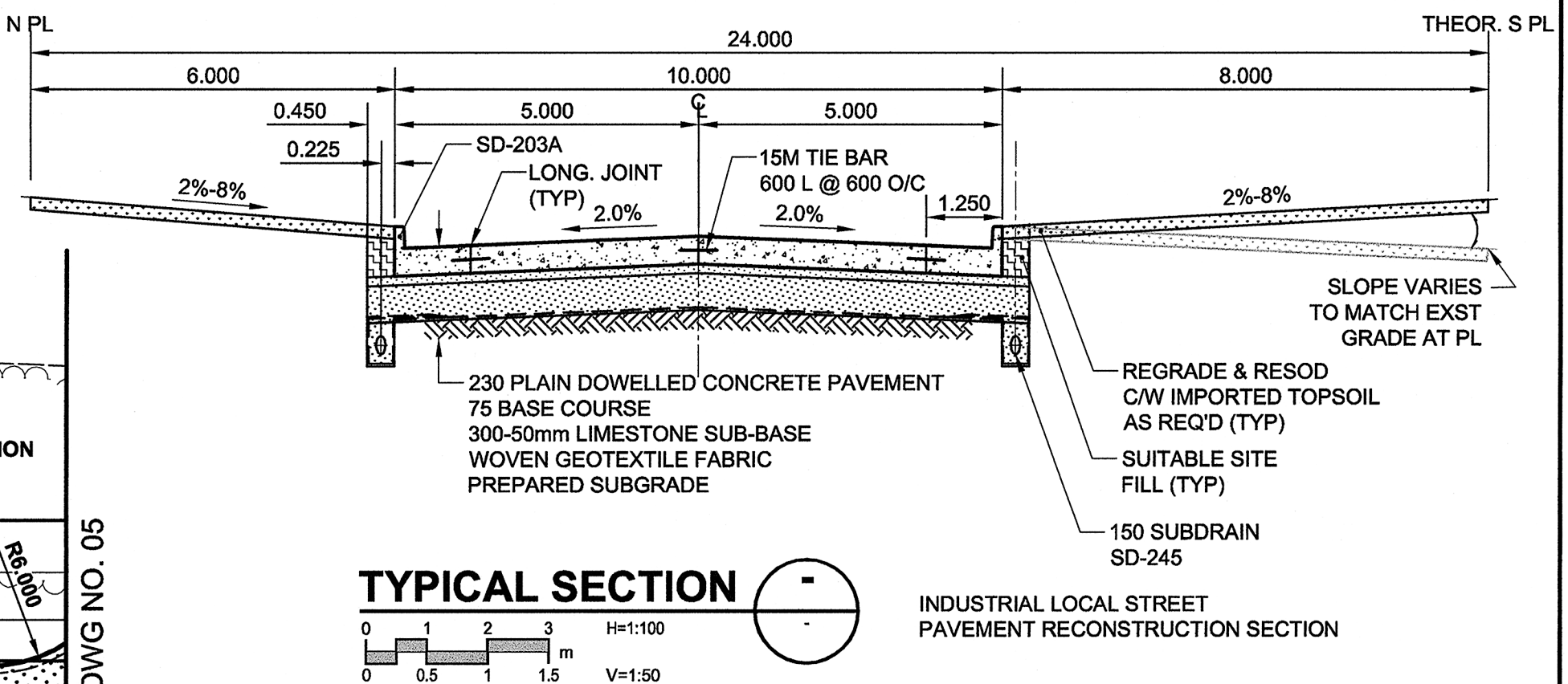
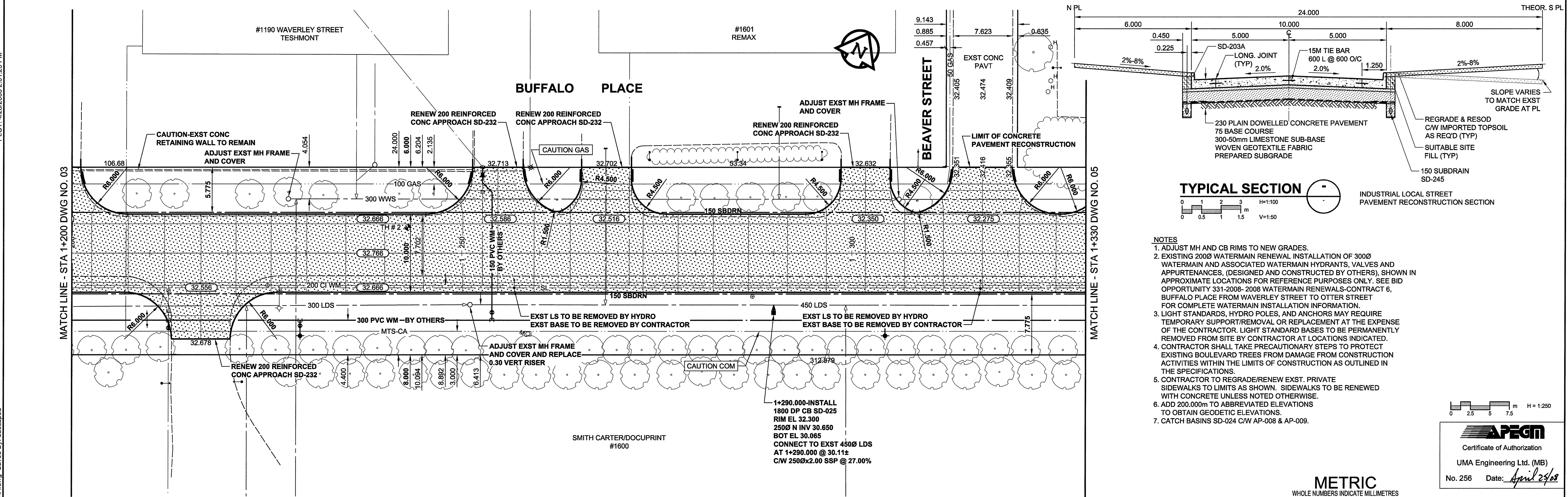
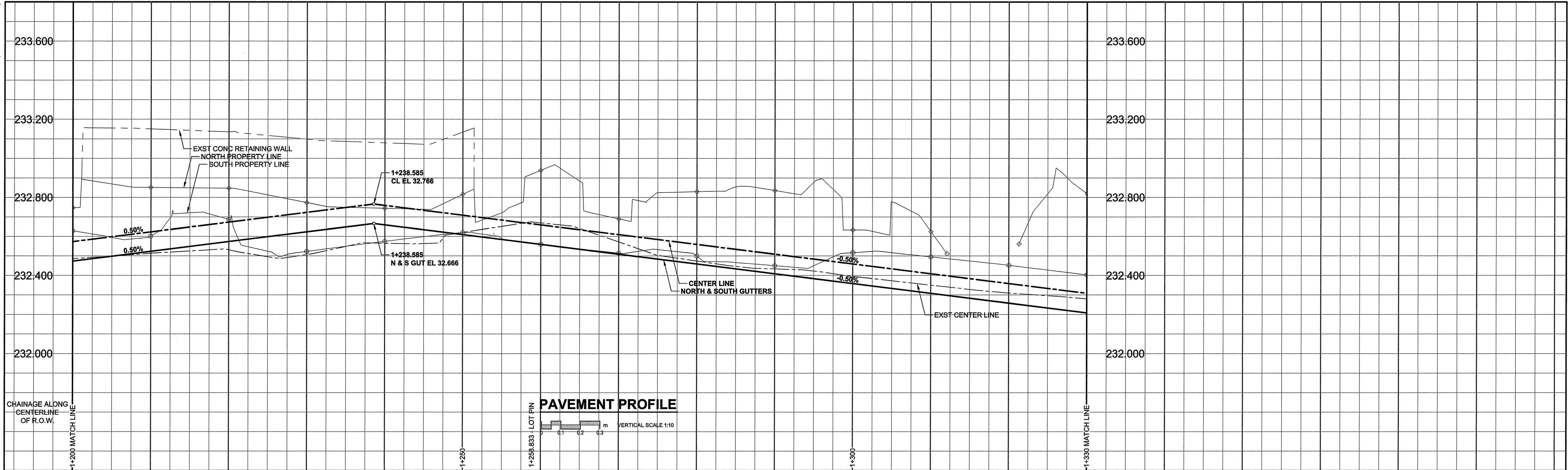


A1 SIZE 23.4" x 33.1" (594mm x 841mm)

PLOT: 4/28/2008 2:01:29 PM

UMA FILE NAME: 0265-403-00_01-CT1004_RX.dwg Saved By: ddespud



- NOTES**
- ADJUST MH AND CB RIMS TO NEW GRADES.
 - EXISTING 2003 WATERMAIN RENEWAL INSTALLATION OF 300Ø WATERMAIN AND ASSOCIATED WATERMAIN HYDRANTS, VALVES AND APPURTENANCES, (DESIGNED AND CONSTRUCTED BY OTHERS), SHOWN IN APPROXIMATE LOCATIONS FOR REFERENCE PURPOSES ONLY. SEE BID OPPORTUNITY 331-2008- 2008 WATERMAIN RENEWALS-CONTRACT 6, BUFFALO PLACE FROM WAVERLEY STREET TO OTTER STREET FOR COMPLETE WATERMAIN INSTALLATION INFORMATION.
 - LIGHT STANDARDS, HYDRO POLES, AND ANCHORS MAY REQUIRE TEMPORARY SUPPORT/REMOVAL OR REPLACEMENT AT THE EXPENSE OF THE CONTRACTOR. LIGHT STANDARD BASES TO BE PERMANENTLY REMOVED FROM SITE BY CONTRACTOR AT LOCATIONS INDICATED.
 - CONTRACTOR SHALL TAKE PRECAUTIONARY STEPS TO PROTECT EXISTING BOULEVARD TREES FROM DAMAGE FROM CONSTRUCTION ACTIVITIES WITHIN THE LIMITS OF CONSTRUCTION AS OUTLINED IN THE SPECIFICATIONS.
 - CONTRACTOR TO REGRADE/RENEW EXST. PRIVATE SIDEWALKS TO LIMITS AS SHOWN. SIDEWALKS TO BE RENEWED WITH CONCRETE UNLESS NOTED OTHERWISE.
 - ADD 200.000m TO ABBREVIATED ELEVATIONS TO OBTAIN GEODETIC ELEVATIONS.
 - CATCH BASINS SD-024 C/W AP-008 & AP-009.

UMA | AECOM

PROFESSIONAL'S SEAL
 PROVINCE OF MANITOBA
 R. P. BRUCE
 REGISTERED PROFESSIONAL ENGINEER

Certificate of Authorization
 UMA Engineering Ltd. (MB)
 No. 256 Date: April 25/08

---	GAS	○	MANHOLE	●	CONCRETE PAVEMENT	■	LOCATION APPROVED
---	COMMUNICATION	□	CATCH BASIN / CATCH PIT	■	ASPHALT PAVEMENT	■	UNDERGROUND STRUCTURES
---	HYDRO	△	CURB INLET WITH BOX	▲	CONC. SIDEWALK/MEDIAN	■	APR 21 2008
---	CAT/FO	○	TREE	■	PAVING STONE	■	DATE
---	TRAFFIC SIGNALS/PIT	⊕	TEST HOLE	■	GRAVEL	■	COMMITTEE
---	LAND DRAINAGE SEWER	⊕	PROPERTY LINE	---	RAMP CURB	---	NOTE:
---	SANITARY/COMBINED SEWER	⊕	SURVEY BAR	---	PAVT PLANING/REMOVAL	---	LOCATION OF UNDERGROUND STRUCTURES
---	SPP/DCP	---	FENCE	---	---	---	AS SHOWN ARE BASED ON THE BEST
---	WATERMAIN	---	BOC/EOPAVT	---	---	---	INFORMATION AVAILABLE. BUT NO
---	SUBDRAIN	---	ELEVATION	---	---	---	GUARANTEE IS GIVEN THAT ALL EXISTING
---	DITCH	---	TRAFFIC SIGN	---	---	---	UTILITIES ARE SHOWN OR THAT THE GIVEN
---	EXISTING	---	---	---	---	---	LOCATIONS ARE EXACT. CONFIRMATION OF
---	LEGEND - PLAN	---	---	---	---	---	EXISTENCE AND EXACT LOCATION OF ALL
---	---	---	---	---	---	---	SERVICES MUST BE OBTAINED FROM THE
---	---	---	---	---	---	---	INDIVIDUAL UTILITIES BEFORE PROCEEDING
---	---	---	---	---	---	---	WITH CONSTRUCTION.

SMITH CARTER/DOCUPRINT
 #1600

1+290.000-INSTALL
 1800 DP CB SD-025
 RIM EL 32.300
 250Ø N INV 30.650
 BOT EL 30.065
 CONNECT TO EXST 450Ø LDS
 AT 1+290.000 @ 30.11±
 C/W 250Øx2.00 SSP @ 27.00%

BM 65-006	ELEV 232.295m	DESIGNED BY	RPB	CHECKED BY	JGK
		DRAWN BY	DID	APPROVED BY	BWB
		HOR. SCALE	1:250	RELEASED FOR CONSTRUCTION	
		VERT. SCALE	1:10	DATE	APR 23/08
0	ISSUED FOR CONSTRUCTION	08/04/25	DID		
NO.	REVISIONS	YYMMDD	BY		

UMA AECOM	
© 2008 UMA ENGINEERING LTD. ALL RIGHTS RESERVED.	
DESIGNED BY	RPB
CHECKED BY	JGK
DRAWN BY	DID
APPROVED BY	BWB
HOR. SCALE	1:250
VERT. SCALE	1:10
RELEASED FOR CONSTRUCTION	
DATE	APR 23/08

PROFESSIONAL'S SEAL
 PROVINCE OF MANITOBA
 R. P. BRUCE
 REGISTERED PROFESSIONAL ENGINEER

CONSULTANT DRAWING NO.
 0265-403-00_01-CT1004_RX.dwg

THE CITY OF WINNIPEG
 PUBLIC WORKS DEPARTMENT
 TRANSPORTATION ENGINEERING DIVISION

BUFFALO PLACE
 WAVERLEY STREET TO OTTER STREET
 STREET RECONSTRUCTION
 HORIZONTAL AND VERTICAL ALIGNMENT
 FROM STA 1+200 TO STA 1+330

CITY DRAWING NUMBER
 N/A

SHEET 4 OF 8

DRAWING No. 04 REV 0

BID OPPORTUNITY NO. 159-2008