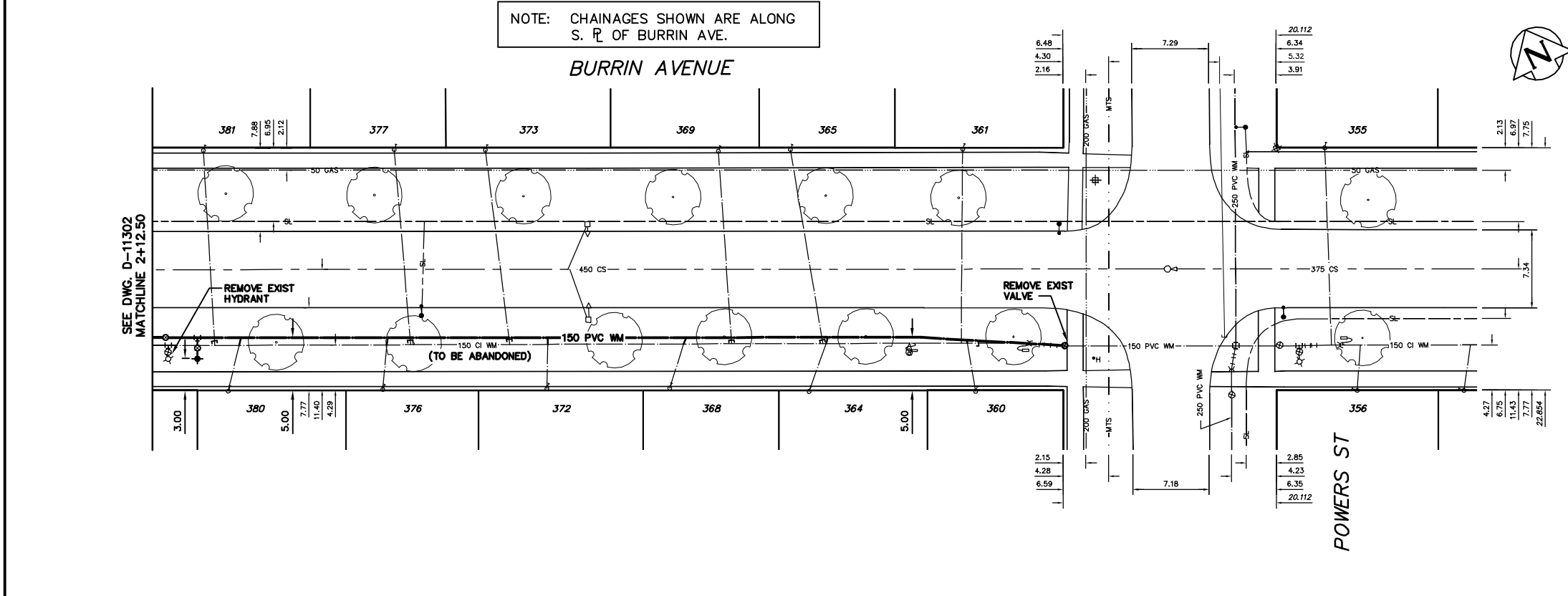


WATER SERVICE INFORMATION					
ADDRESS	SIZE(mm) & TYPE (STREET)	SIZE(mm) & TYPE (PROP)	SHORT & LONG MEASUREMENT	CORP. LOCATION	REMARKS
355 BURRIN AVE	20		2.77 EWL HSE	0.70 E OF S/C	
RESIDENTIAL	COPPER		4.64 EEL POWERS		
356 BURRIN AVE	20		5.67 EWL HSE	0.40 E OF S/C	
RESIDENTIAL	COPPER		7.69 EEL POWERS		
360 BURRIN AVE	20		3.03 EWL HSE	0.90 W OF S/C	
RESIDENTIAL	COPPER		8.25 WML POWERS		
361 BURRIN AVE	20		4.55 EWL HSE	0.15 W OF S/C	
RESIDENTIAL	COPPER		9.51 WML POWERS		
364 BURRIN AVE	20		1.17 EWL HSE	1.70 E OF S/C	
RESIDENTIAL	COPPER		23.96 WML POWERS		
365 BURRIN AVE	20		1.02 EWL HSE	3.0 E OF S/C	
RESIDENTIAL	COPPER		25.66 WML POWERS		
368 BURRIN AVE	20		0.94 EWL HSE	1.34 E OF S/C	
RESIDENTIAL	COPPER		37.19 WML POWERS		
369 BURRIN AVE	20		2.19 EWL HSE	1.30 E OF S/C	
RESIDENTIAL	COPPER		32.47 WML POWERS		
372 BURRIN AVE	20		5.01 EWL HSE	0.15 E OF S/C	
RESIDENTIAL	COPPER		48.65 WML POWERS		
373 BURRIN AVE	20		1.64 EWL HSE	2.02 E OF S/C	
RESIDENTIAL	COPPER		54.50 WML POWERS		
376 BURRIN AVE	20		1.39 EWL HSE	0.52 E OF S/C	
RESIDENTIAL	COPPER		64.13 WML POWERS		
377 BURRIN AVE	20		3.67 EWL HSE	1.55 E OF S/C	
RESIDENTIAL	COPPER		62.39 WML POWERS		
380 BURRIN AVE	20		1.39 EWL HSE	1.10 E OF S/C	
RESIDENTIAL	COPPER		78.71 WML POWERS		
381 BURRIN AVE	20		3.78 EWL HSE	1.06 E OF S/C	
RESIDENTIAL	COPPER		81.02 WML POWERS		

* SERVICES TO BE RENEWED TO R UPON CONFIRMATION BY THE CONTRACTOR OF EXISTING 1/2" COPPER OR LEAD SERVICE. OBTAIN APPROVAL FROM CONTRACT ADMINISTRATOR PRIOR TO RENEWAL.

NOTE: CHAINAGES SHOWN ARE ALONG S. R OF BURRIN AVE.



- CONSTRUCTION NOTES**
1. EXPOSE EXISTING WATERMAIN & CONFIRM INVERTS PRIOR TO CONSTRUCTION.
 2. CONFIRM LOCATION OF ALL SERVICES IN THE FIELD.
 3. INSTALL WATERMAIN BY TRENCHLESS METHODS.
 4. TRENCHES AND EXCAVATIONS WITHIN 1 METRE OF A PAVED AREA INCLUDING SIDEWALKS SHALL BE CLASS 3 BACKFILL.
 5. ALL MATERIALS SHALL CONFORM TO THE CITY OF WINNIPEG STANDARD CONSTRUCTION SPECIFICATIONS.
 6. MINIMUM COVER TO TOP OF WATERMAIN SHALL BE 2.4 m.
 7. REPLACE ALL EXISTING LEAD SERVICES FROM PROPOSED WATERMAIN TO R.
 8. NOTIFY ALL AFFECTED RESIDENTS AND BUSINESSES 24 HOURS IN ADVANCE OF ANY WATER SHUTDOWNS OR DISRUPTION OF SERVICE.
 9. EXCAVATIONS TO BE LOCATED AWAY FROM EXISTING TREE'S.

METRIC
WHOLE NUMBERS INDICATE MILLIMETRES
DECIMALIZED NUMBERS INDICATE METRES

NOTE: ALL VALVES TO BE INSTALLED CLOCKWISE TO CLOSE

WARNING
IF POWER EQUIPMENT OR EXPLOSIVES ARE TO BE USED FOR EXCAVATION ON THIS PROJECT THE CONTRACTOR MUST:
1) NOTIFY THE GAS COMPANY OF THE PROPOSED LOCATION OF EXCAVATION.
2) TAKE PRECAUTION TO AVOID DAMAGE TO GAS COMPANY INSTALLATIONS.
SEE PROVINCIAL REGULATION 210/72 FOR DETAILS

EXISTING	LEGEND-PLAN	PROPOSED	EXISTING	LEGEND-PLAN	PROPOSED	EXISTING	LEGEND-PROFILE	PROPOSED
200 WM	WATERMAIN	200 WM	SL, HYDRO	150 WM	WATERMAIN	150 WM		
⊕	HYDRANT	⊕	MTS	+	HYDRANT	+		
⊙	VALVE	⊙	TRAFFIC SIGNALS	⊗	VALVE	⊗		
525 LDS	LAND DRAINAGE SEWER	525 LDS	50 GAS	50 GAS	300 LDS	LAND DRAINAGE SEWER	300 LDS	
375 WWS	WASTEWATER SEWER	375 WWS	SURVEY BAR	250 WWS	WASTEWATER SEWER	250 WWS		
○	MANHOLE	●	FENCE	— X —	⊕	PROFILE		
□	CATCH BASIN	■	POLE - HYDRO, MTS	⌋	GROUND ABOVE PIPE			
▽	CURB INLET	▽	CURB STOP	⌋	⊕	DITCH (NORTH & WEST)		
∇	REDUCER	∇	GUY ANCHOR	⌋	⊕	DITCH (SOUTH & EAST)		
X	COUPLER	X	LIGHT STANDARD	⌋	⊕	GUTTER (NORTH & WEST)		
⊕	ANODE	⊕	TREE	⌋	⊕	GUTTER (SOUTH & EAST)		

LOCATION APPROVED	B.M. ELEV.	FIELD BOOK #
UNDERGROUND STRUCTURES	POSTED TO LBS	
SUPV. U/G STRUCTURES COMMITTEE	DATE	
NOTE:		
LOCATION OF UNDERGROUND STRUCTURES AS SHOWN ARE BASED ON THE BEST INFORMATION AVAILABLE BUT NO GUARANTEE IS GIVEN THAT ALL EXISTING UTILITIES ARE SHOWN OR THAT THE GIVEN LOCATIONS ARE EXACT. CONFIRMATION OF EXISTENCE AND EXACT LOCATION OF ALL SERVICES MUST BE OBTAINED FROM THE INDIVIDUAL UTILITIES BEFORE PROCEEDING WITH CONSTRUCTION.		
NO.	REVISIONS	DATE BY

CITY OF WINNIPEG
WATER AND WASTE ENGINEERING DIVISION

DESIGNED BY: MEK
CHECKED BY: NC
DRAWN BY: CJH
APPROVED BY: KZ

HOR. SCALE: 1:250
VERTICAL: 1:50

RELEASED FOR CONSTRUCTION
SIGNED BY K. ZUREK

DATE: 2008 03 20
DATE: 08/03/20

ENGINEER'S SEAL
ORIGINAL SIGNED BY K.R. ZUREK
08/03/20

THE CITY OF WINNIPEG
WATER AND WASTE DEPARTMENT

2008 WATERMAIN RENEWALS
CONTRACT 1
BURRIN AVENUE
95 E OF ANDREWS STREET TO POWERS STREET

SHEET 2 OF 16
CITY DRAWING NUMBER
D-11303

BID OPPORTUNITY: 225-2008
FILENAME: D-11303dwg
PLOT DATE: 2008 03 20