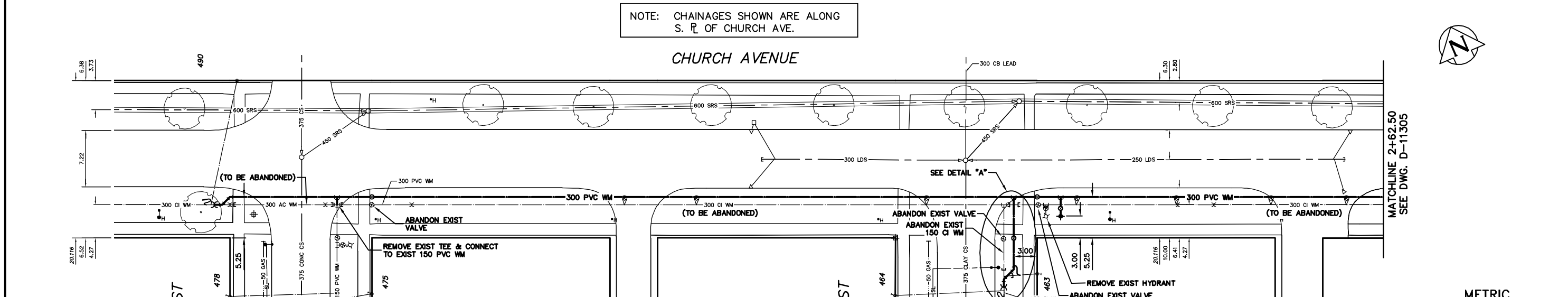


NOTE: CHAINAGES SHOWN ARE ALONG S. P. OF CHURCH AVE.



CHURCH AVENUE

WATER SERVICE INFORMATION

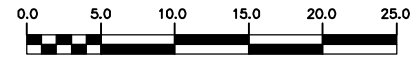
ADDRESS	SIZE(mm) & TYPE (STREET)	SIZE(mm) & TYPE (PROP)	SHORT & LONG MEASUREMENT	CORP. LOCATION	REMARKS
475 SINCLAIR ST	20 COPPER	20 NSL HSE	2.08 NSL HSE	0.80 S OF S/C	SERVICED OFF SINCLAIR
478 SINCLAIR ST	20 COPPER	20 SSL CHURCH	7.10 SSL CHURCH	0.45 N OF S/C	SERVICED OFF SINCLAIR
480 SINCLAIR ST	38 COPPER	38 SSL CHURCH	7.37 SSL CHURCH	3.35 W OF S/C	SERVICED OFF CHURCH
483 SEYMOUR ST	20 COPPER	20 EWL SINCLAIR	0.87 EWL SINCLAIR	0.35 S OF S/C	SERVICED OFF SEYMOUR
484 SEYMOUR ST	20 COPPER	20 NSL HSE	3.72 NSL HSE	0.60 N OF S/C	SERVICED OFF SEYMOUR
	20 LEAD	20 SSL CHURCH	4.66 SSL CHURCH		
	20 LEAD	20 NSL HSE	0.87 NSL HSE		
	20 LEAD	20 SSL CHURCH	7.37 SSL CHURCH		

\* SERVICES TO BE RENEWED TO P UPON CONFIRMATION BY THE CONTRACTOR OF EXISTING 1/2" COPPER OR LEAD SERVICE. OBTAIN APPROVAL FROM CONTRACT ADMINISTRATOR PRIOR TO RENEWAL.

FOR CONSTRUCTION NOTES  
SEE DRAWING D-11306

METRIC  
WHOLE NUMBERS INDICATE MILLIMETRES  
DECIMALIZED NUMBERS INDICATE METRES  
NOTE: ALL VALVES TO BE INSTALLED COUNTERCLOCKWISE TO CLOSE

WARNING  
IF POWER EQUIPMENT OR EXPLOSIVES ARE TO BE USED FOR EXCAVATION ON THIS PROJECT THE CONTRACTOR MUST:  
1) NOTIFY THE GAS COMPANY OF THE PROPOSED LOCATION OF EXCAVATION.  
2) TAKE PRECAUTION TO AVOID DAMAGE TO GAS COMPANY INSTALLATIONS.  
SEE PROVINCIAL REGULATION 210/72 FOR DETAILS



EXISTING	LEGEND-PLAN	PROPOSED	EXISTING	LEGEND-PLAN	PROPOSED	EXISTING	LEGEND-PROFILE	PROPOSED
200 WM	WATERMAIN	200 WM	SL, HYDRO	MTS	50 GAS	150 WM	WATERMAIN	150 WM
525 LDS	LAND DRAINAGE SEWER	525 LDS	TRAFFIC SIGNALS	GAS	300 LDS	300 LDS	LAND DRAINAGE SEWER	300 LDS
375 WWS	WASTEWATER SEWER	375 WWS	SURVEY BAR	50 GAS	250 WWS	250 WWS	WASTEWATER SEWER	250 WWS
○	MANHOLE	●	FENCE	50 GAS	○	○	PROFILE	○
□	CATCH BASIN	■	POLE - HYDRO, MTS	50 GAS	○	○	GROUND ABOVE PIPE	○
▽	CURB INLET	▽	CURB STOP	50 GAS	○	○	☉ DITCH (NORTH & WEST)	○
▽	REDUCER	▽	GUY ANCHOR	50 GAS	○	○	☉ DITCH (SOUTH & EAST)	○
X	COUPLER	X	LIGHT STANDARD	50 GAS	○	○	☉ GUTTER (NORTH & WEST)	○
○	ANODE	○	TREE	50 GAS	○	○	☉ GUTTER (SOUTH & EAST)	○

LOCATION APPROVED	B.M. ELEV.	FIELD BOOK #
UNDERGROUND STRUCTURES		
SUPV. U/G STRUCTURES COMMITTEE		
DATE		
NOTE:		
LOCATION OF UNDERGROUND STRUCTURES AS SHOWN ARE BASED ON THE BEST INFORMATION AVAILABLE BUT NO GUARANTEE IS GIVEN THAT ALL EXISTING UTILITIES ARE SHOWN OR THAT THE GIVEN LOCATIONS ARE EXACT. CONFIRMATION OF EXISTENCE AND EXACT LOCATION OF ALL SERVICES MUST BE OBTAINED FROM THE INDIVIDUAL UTILITIES BEFORE PROCEEDING WITH CONSTRUCTION.		
NO. REVISIONS	DATE	BY

CITY OF WINNIPEG  
WATER AND WASTE  
ENGINEERING DIVISION

DESIGNED BY DB CHECKED BY NC  
DRAWN BY CJH APPROVED BY KZ

HOR. SCALE 1:250  
VERTICAL SCALE 1:50

RELEASED FOR CONSTRUCTION  
SIGNED BY K. ZUREK

DATE 2008 03 20 DATE 08/03/20

ENGINEER'S SEAL  
ORIGINAL SIGNED BY K.R. ZUREK  
08/03/20

THE CITY OF WINNIPEG  
WATER AND WASTE DEPARTMENT

2008 WATERMAIN RENEWALS  
CONTRACT 1  
CHURCH AVENUE  
SINCLAIR STREET TO  
45 E OF SEYMOUR STREET

SHEET 3 OF 16  
CITY DRAWING NUMBER  
D-11304