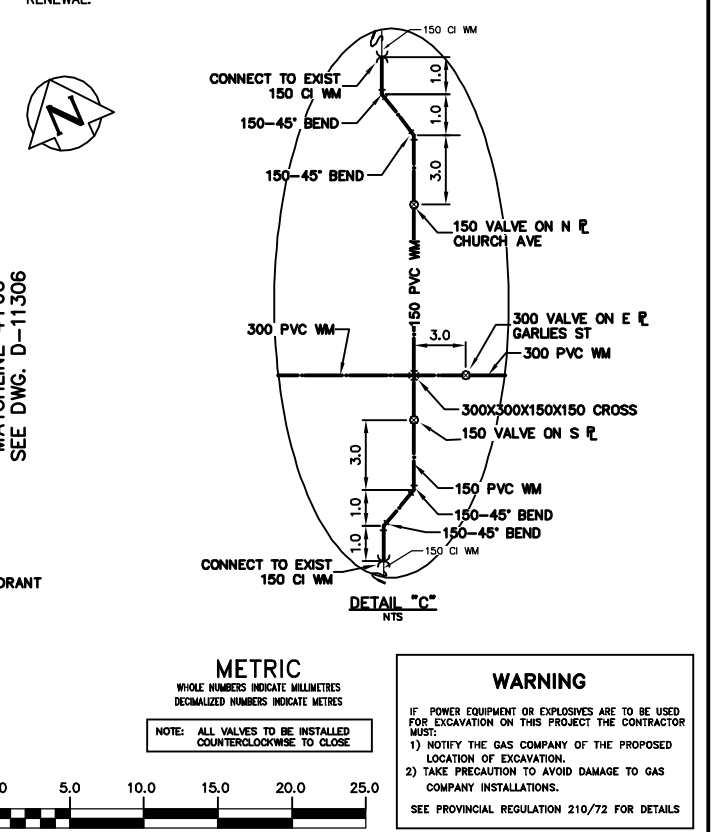
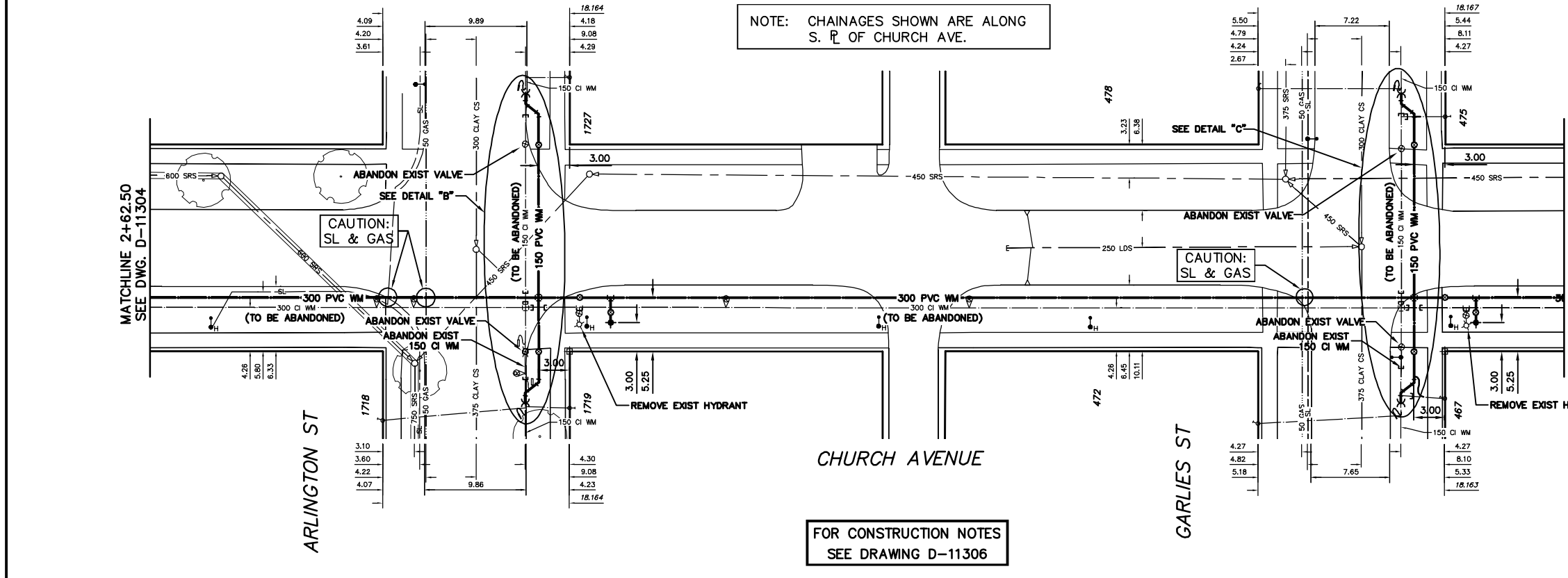


WATER SERVICE INFORMATION					
ADDRESS	SIZE(mm) & TYPE (STREET)	SIZE(mm) & TYPE (PROF)	SHORT & LONG MEASUREMENT	CORP. LOCATION	REMARKS
1718 ARLINGTON ST	20	20	1.64 NSL HSE	1.20 N OF S/C	SERVICED OFF ARLINGTON
RESIDENTIAL	COPPER	LEAD	6.61 SSL CHURCH		
1719 ARLINGTON ST	20	20	2.45 NSL HSE	0.15 N OF S/C	SERVICED OFF ARLINGTON
RESIDENTIAL	LEAD	LEAD	5.45 SSL CHURCH		
1727 ARLINGTON ST	20	20	5.40 NSL HSE	OPP S/C	SERVICED OFF ARLINGTON
RESIDENTIAL	LEAD	COPPER	6.67 NNL CHURCH		
487 GARLIES ST	20	20	3.27 NSL HSE	0.3 N OF S/C	SERVICED OFF GARLIES
RESIDENTIAL	COPPER	COPPER	4.54 SSL CHURCH		
472 GARLIES ST	20	20	1.21 NSL HSE	0.8 N OF S/C	SERVICED OFF GARLIES
RESIDENTIAL	LEAD	COPPER	6.90 SSL CHURCH		
475 GARLIES ST	20	20	1.97 NSL HSE	OPP S/C	SERVICED OFF GARLIES
RESIDENTIAL	COPPER	COPPER	2.75 NNL CHURCH		
478 GARLIES ST	20	20	4.31 NSL HSE	OPP S/C	SERVICED OFF GARLIES
RESIDENTIAL	COPPER	COPPER	5.49 NNL CHURCH		

* SERVICES TO BE RENEWED TO R UPON CONFIRMATION BY THE CONTRACTOR OF EXISTING 1/2" COPPER OR LEAD SERVICE. OBTAIN APPROVAL FROM CONTRACT ADMINISTRATOR PRIOR TO RENEWAL.



200 WM	WATERMAIN	200 WM	SL, HYDRO	150 WM	WATERMAIN	150 WM
+	HYDRANT	+	MTS	+	HYDRANT	+
o	VALVE	o	TRAFFIC SIGNALS	+	VALVE	+
525 LDS	LAND DRAINAGE SEWER	525 LDS	GAS	300 LDS	LAND DRAINAGE SEWER	300 LDS
375 WWS	WASTEWATER SEWER	375 WWS	SURVEY BAR	250 WWS	WASTEWATER SEWER	250 WWS
o	MANHOLE	o	FENCE	o	PROFILE	o
□	CATCH BASIN	□	POLE - HYDRO, MTS	o	GROUND ABOVE PIPE	o
▽	CURB INLET	▽	CURB STOP	o	☉ DITCH (NORTH & WEST)	o
▽	REDUCER	▽	GUY ANCHOR	o	☉ DITCH (SOUTH & EAST)	o
X	COUPLER	X	LIGHT STANDARD	o	GUTTER (NORTH & WEST)	o
o	ANODE	o	TREE	o	GUTTER (SOUTH & EAST)	o
EXISTING	LEGEND-PLAN	PROPOSED	EXISTING	LEGEND-PLAN	PROPOSED	EXISTING
EXISTING	LEGEND-PROFILE	PROPOSED	EXISTING	LEGEND-PROFILE	PROPOSED	EXISTING

LOCATION APPROVED UNDERGROUND STRUCTURES	
SUPV. U/G STRUCTURES COMMITTEE	DATE
NOTE: LOCATION OF UNDERGROUND STRUCTURES AS SHOWN ARE BASED ON THE BEST INFORMATION AVAILABLE BUT NO GUARANTEE IS GIVEN THAT ALL EXISTING UTILITIES ARE SHOWN OR THAT THE GIVEN LOCATIONS ARE EXACT. CONFIRMATION OF EXISTENCE AND EXACT LOCATION OF ALL SERVICES MUST BE OBTAINED FROM THE INDIVIDUAL UTILITIES BEFORE PROCEEDING WITH CONSTRUCTION.	
NO.	REVISIONS
DATE	BY

CITY OF WINNIPEG WATER AND WASTE ENGINEERING DIVISION

DESIGNED BY: DB
CHECKED BY: NC

DRAWN BY: CJH
APPROVED BY: KZ

HOR. SCALE: 1:250
VERTICAL: 1:50

RELEASED FOR CONSTRUCTION
SIGNED BY: K. ZUREK

DATE: 2008 03 20
DATE: 08/03/20

THE CITY OF WINNIPEG WATER AND WASTE DEPARTMENT

2008 WATERMAIN RENEWALS CONTRACT 1

CHURCH AVENUE
45 E OF SEYMOUR STREET TO 13 E OF GARLIES STREET

ORIGINAL SIGNED BY: K.R. ZUREK
08/03/20

FILE NAME: D-11305.dwg
PLOT DATE: 2008 03 20

SHEET 4 OF 16
CITY DRAWING NUMBER: D-11305