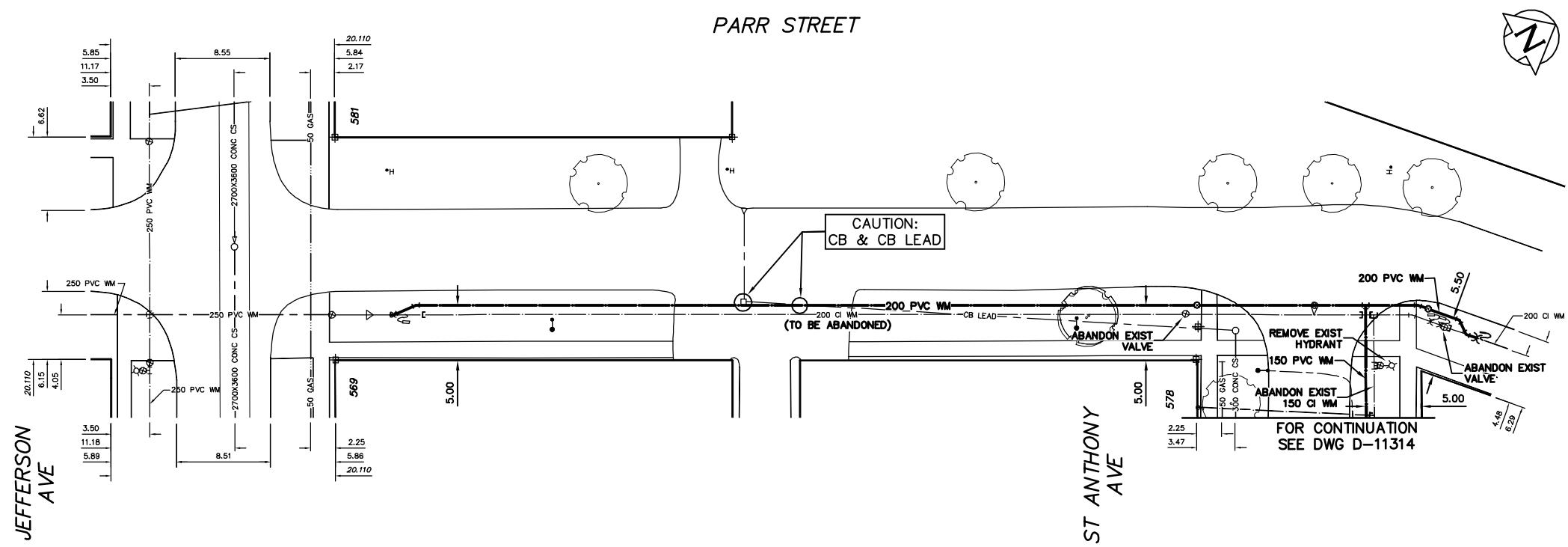


WATER SERVICE INFORMATION					
ADDRESS	SIZE(mm) & TYPE (STREET)	SIZE(mm) & TYPE (PROP)	SHORT & LONG MEASUREMENT	CORP. LOCATION	REMARKS
569 JEFFERSON AVE	20	-	3.68 MEL HSE	1.0 W OF S/C	-
RESIDENTIAL	COPPER	-	9.50 EEL PARR		-
581 JEFFERSON AVE	20	-	1.27 MEL HSE	2.13 E OF S/C	-
RESIDENTIAL	COPPER	-	4.20 WML PARR		-
578 ST ANTHONY ST	20	-	2.97 EWL HSE	0.75 E OF S/C	-
RESIDENTIAL	COPPER	-	4.22 EEL PARR		-

* SERVICES TO BE RENEWED TO R UPON CONFIRMATION BY THE CONTRACTOR OF EXISTING 1/2" COPPER OR LEAD SERVICE. OBTAIN APPROVAL FROM CONTRACT ADMINISTRATOR PRIOR TO RENEWAL.

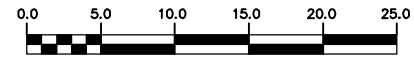
NOTE: CHAINAGES SHOWN ARE ALONG E. R. OF ST PARR ST.

- CONSTRUCTION NOTES**
- EXPOSE EXISTING WATERMAIN & CONFIRM INVERTS PRIOR TO CONSTRUCTION.
 - CONFIRM LOCATION OF ALL SERVICES IN THE FIELD.
 - INSTALL WATERMAIN BY TRENCHLESS METHODS.
 - TRENCHES AND EXCAVATIONS WITHIN 1 METRE OF A PAVED AREA INCLUDING SIDEWALKS SHALL BE CLASS 3 BACKFILL.
 - ALL MATERIALS SHALL CONFORM TO THE CITY OF WINNIPEG STANDARD CONSTRUCTION SPECIFICATIONS.
 - MINIMUM COVER TO TOP OF WATERMAIN SHALL BE 2.4 m.
 - REPLACE ALL EXISTING LEAD SERVICES FROM PROPOSED WATERMAIN TO R.
 - NOTIFY ALL AFFECTED RESIDENTS AND BUSINESSES 24 HOURS IN ADVANCE OF ANY WATER SHUTDOWNS OR DISRUPTION OF SERVICE.
 - EXCAVATIONS TO BE LOCATED AWAY FROM EXISTING TREE'S.



METRIC
WHOLE NUMBERS INDICATE MILLIMETRES
DECIMALIZED NUMBERS INDICATE METRES
NOTE: ALL VALVES TO BE INSTALLED CLOCKWISE TO CLOSE

WARNING
IF POWER EQUIPMENT OR EXPLOSIVES ARE TO BE USED FOR EXCAVATION ON THIS PROJECT THE CONTRACTOR MUST:
1) NOTIFY THE GAS COMPANY OF THE PROPOSED LOCATION OF EXCAVATION.
2) TAKE PRECAUTION TO AVOID DAMAGE TO GAS COMPANY INSTALLATIONS.
SEE PROVINCIAL REGULATION 210/72 FOR DETAILS



200 WM	WATERMAIN	200 WM	SL, HYDRO	150 WM	WATERMAIN	150 WM	LOCATION APPROVED	B.M. ELEV.	FIELD BOOK #:	CITY OF WINNIPEG WATER AND WASTE ENGINEERING DIVISION	ENGINEER'S SEAL ORIGINAL SIGNED BY K.R. ZUREK 08/03/20	2008 WATERMAIN RENEWALS CONTRACT 1 PARR STREET JEFFERSON AVENUE TO ST ANTHONY AVENUE	SHEET 14 OF 16 CITY DRAWING NUMBER D-11315
⊕	HYDRANT	⊕	MTS	⊕	HYDRANT	⊕	UNDERGROUND STRUCTURES						
⊙	VALVE	⊙	TRAFFIC SIGNALS	⊙	VALVE	⊙				DRAWN BY C.J.H.	APPROVED BY K.Z.		
525 LDS	LAND DRAINAGE SEWER	525 LDS	GAS	50 GAS	300 LDS	LAND DRAINAGE SEWER				HOR. SCALE 1:250	RELEASED FOR CONSTRUCTION		
375 WWS	WASTEWATER SEWER	375 WWS	SURVEY BAR	250 WWS	250 WWS	WASTEWATER SEWER				VERTICAL SCALE 1:50	SIGNED BY K. ZUREK		
○	MANHOLE	●	FENCE	⊕	⊕	PROFILE							
□	CATCH BASIN	■	POLE - HYDRO, MTS	⊕	⊕	GROUND ABOVE PIPE							
▽	CURB INLET	▽	CURB STOP	⊕	⊕	⊕ DITCH (NORTH & WEST)							
△	REDUCER	△	GUY ANCHOR	⊕	⊕	⊕ DITCH (SOUTH & EAST)							
⊕	COUPLER	⊕	LIGHT STANDARD	⊕	⊕	⊕ GUTTER (NORTH & WEST)							
⊕	ANODE	⊕	TREE	⊕	⊕	⊕ GUTTER (SOUTH & EAST)							
EXISTING	LEGEND-PLAN	PROPOSED	EXISTING	LEGEND-PLAN	PROPOSED	EXISTING	LEGEND-PROFILE	PROPOSED					