

WATER SERVICE INFORMATION					
ADDRESS	SIZE(mm) & TYPE (STREET)	SIZE(mm) & TYPE (PROP)	SHORT & LONG MEASUREMENT	CORP. LOCATION	REMARKS
1 SWEETWOOD BY RESIDENTIAL	20 COPPER	-	2.71 NSL HSE	-	-
2 SWEETWOOD BY RESIDENTIAL	20 COPPER	-	5.09 NNL BUTTERCUP	-	-
3 SWEETWOOD BY RESIDENTIAL	20 COPPER	-	2.95 NSL HSE	-	-
4 SWEETWOOD BY RESIDENTIAL	20 COPPER	-	5.71 NNL BUTTERCUP	-	-
5 SWEETWOOD BY RESIDENTIAL	20 COPPER	-	2.35 NSL HSE	-	-
6 SWEETWOOD BY RESIDENTIAL	20 COPPER	-	23.14 NNL BUTTERCUP	-	-
7 SWEETWOOD BY RESIDENTIAL	20 COPPER	-	2.35 NSL HSE	-	-
8 SWEETWOOD BY RESIDENTIAL	20 COPPER	-	24.23 NNL BUTTERCUP	-	-
9 SWEETWOOD BY RESIDENTIAL	20 COPPER	-	4.70 NSL HSE	-	-
10 SWEETWOOD BY RESIDENTIAL	20 COPPER	-	40.80 NNL BUTTERCUP	-	-
11 SWEETWOOD BY RESIDENTIAL	20 COPPER	-	2.71 NSL HSE	-	-
12 SWEETWOOD BY RESIDENTIAL	20 COPPER	-	42.36 NNL BUTTERCUP	-	-
13 SWEETWOOD BY RESIDENTIAL	20 COPPER	-	0.90 SSL HSE	-	-
14 SWEETWOOD BY RESIDENTIAL	20 COPPER	-	55.59 NNL BUTTERCUP	-	-
15 SWEETWOOD BY RESIDENTIAL	20 COPPER	-	2.90 NSL HSE	7.10 N OF S/C	-
16 SWEETWOOD BY RESIDENTIAL	20 COPPER	-	58.92 NNL BUTTERCUP	-	-
17 SWEETWOOD BY RESIDENTIAL	20 COPPER	-	3.41 EWL HSE	-	-
18 SWEETWOOD BY RESIDENTIAL	20 COPPER	-	77.39 NNL BUTTERCUP	-	-
19 SWEETWOOD BY RESIDENTIAL	20 COPPER	-	4.25 EWL HSE	-	-
20 SWEETWOOD BY RESIDENTIAL	20 COPPER	-	87.36 NNL BUTTERCUP	-	-
21 FORESTPARK DR RESIDENTIAL	20 COPPER	-	1.13 EEL HSE	-	-
22 FORESTPARK DR RESIDENTIAL	20 COPPER	-	2.78 MEL SWEETWOOD BAY W	-	-

* SERVICES TO BE RENEWED TO R UPON CONFIRMATION BY THE CONTRACTOR OF EXISTING 1/2" COPPER OR LEAD SERVICE. OBTAIN APPROVAL FROM CONTRACT ADMINISTRATOR PRIOR TO RENEWAL.

- CONSTRUCTION NOTES**
- EXPOSE EXISTING WATERMAIN & CONFIRM INVERTS PRIOR TO CONSTRUCTION.
 - CONFIRM LOCATION OF ALL SERVICES IN THE FIELD.
 - INSTALL WATERMAIN BY TRENCHLESS METHODS.
 - TRENCHES AND EXCAVATIONS WITHIN 1 METRE OF A PAVED AREA INCLUDING SIDEWALKS SHALL BE CLASS 3 BACKFILL.
 - ALL MATERIALS SHALL CONFORM TO THE CITY OF WINNIPEG STANDARD CONSTRUCTION SPECIFICATIONS.
 - MINIMUM COVER TO TOP OF WATERMAIN SHALL BE 2.4 m.
 - REPLACE ALL EXISTING LEAD SERVICES FROM PROPOSED WATERMAIN TO R.
 - NOTIFY ALL AFFECTED RESIDENTS AND BUSINESSES 24 HOURS IN ADVANCE OF ANY WATER SHUTDOWNS OR DISRUPTION OF SERVICE.
 - EXCAVATIONS TO BE LOCATED AWAY FROM EXISTING TREE'S.

METRIC
WHOLE NUMBERS INDICATE MILLIMETRES
DECIMALIZED NUMBERS INDICATE METRES

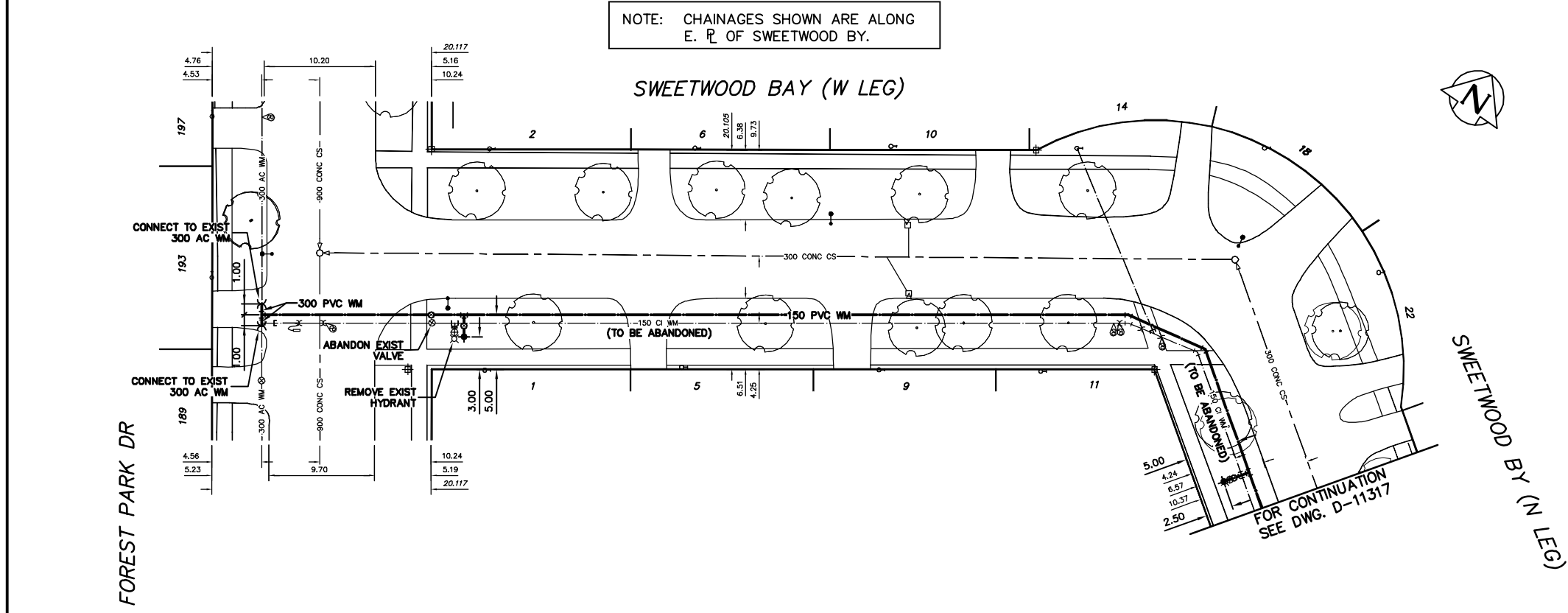
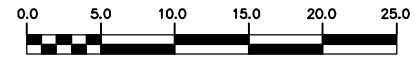
NOTE: ALL VALVES TO BE INSTALLED CLOCKWISE TO CLOSE

WARNING

IF POWER EQUIPMENT OR EXPLOSIVES ARE TO BE USED FOR EXCAVATION ON THIS PROJECT THE CONTRACTOR MUST:

- NOTIFY THE GAS COMPANY OF THE PROPOSED LOCATION OF EXCAVATION.
- TAKE PRECAUTION TO AVOID DAMAGE TO GAS COMPANY INSTALLATIONS.

SEE PROVINCIAL REGULATION 210/72 FOR DETAILS



EXISTING	LEGEND-PLAN	PROPOSED	EXISTING	LEGEND-PLAN	PROPOSED	EXISTING	LEGEND-PROFILE	PROPOSED
200 WM	WATERMAIN	200 WM	SL, HYDRO	MTS	150 WM	WATERMAIN	150 WM	
Hydrant symbol	HYDRANT	Hydrant symbol	TRAFFIC SIGNALS		Hydrant symbol	HYDRANT	150 WM	
Valve symbol	VALVE	Valve symbol	GAS	50 GAS	Valve symbol	VALVE	300 LDS	
525 LDS	LAND DRAINAGE SEWER	525 LDS	SURVEY BAR	250 WWS	300 LDS	LAND DRAINAGE SEWER	300 LDS	
375 WWS	WASTEWATER SEWER	375 WWS	FENCE	X	250 WWS	WASTEWATER SEWER	250 WWS	
Manhole symbol	MANHOLE	Manhole symbol	POLE - HYDRO, MTS		Profile symbol	PROFILE		
Catch basin symbol	CATCH BASIN	Catch basin symbol	CURB STOP		Ditch symbol	DITCH (NORTH & WEST)		
Reducer symbol	REDUCER	Reducer symbol	GUY ANCHOR		Ditch symbol	DITCH (SOUTH & EAST)		
Coupler symbol	COUPLER	Coupler symbol	LIGHT STANDARD		Gutter symbol	GUTTER (NORTH & EAST)		
Anode symbol	ANODE	Anode symbol	TREE		Gutter symbol	GUTTER (SOUTH & EAST)		

LOCATION APPROVED
UNDERGROUND STRUCTURES

SUPV. U/G STRUCTURES COMMITTEE DATE

NOTE:
LOCATION OF UNDERGROUND STRUCTURES AS SHOWN ARE BASED ON THE BEST INFORMATION AVAILABLE BUT NO GUARANTEE IS GIVEN THAT ALL EXISTING UTILITIES ARE SHOWN OR THAT THE GIVEN LOCATIONS ARE EXACT. CONFIRMATION OF EXISTENCE AND EXACT LOCATION OF ALL SERVICES MUST BE OBTAINED FROM THE INDIVIDUAL UTILITIES BEFORE PROCEEDING WITH CONSTRUCTION.

CITY OF WINNIPEG
WATER AND WASTE
ENGINEERING DIVISION

DESIGNED BY: MEK
CHECKED BY: NC

DRAWN BY: CJH
APPROVED BY: KZ

HOR. SCALE: 1:250
VERTICAL: 1:50

RELEASED FOR CONSTRUCTION
SIGNED BY: K. ZUREK

DATE: 2008 03 20
DATE: 08/03/20

ENGINEER'S SEAL

ORIGINAL SIGNED BY: K.R. ZUREK
DATE: 08/03/20

FILE NAME: D-11316.dwg
PLOT DATE: 2008 03 20

THE CITY OF WINNIPEG
WATER AND WASTE DEPARTMENT

2008 WATERMAIN RENEWALS
CONTRACT 1
SWEETWOOD BAY (W LEG)
FOREST PARK DRIVE TO
SWEETWOOD BAY (N LEG)

SHEET 15 OF 16
CITY DRAWING NUMBER
D-11316