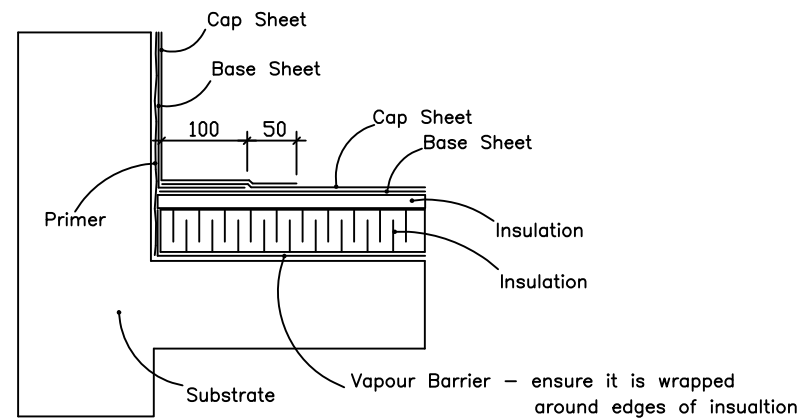
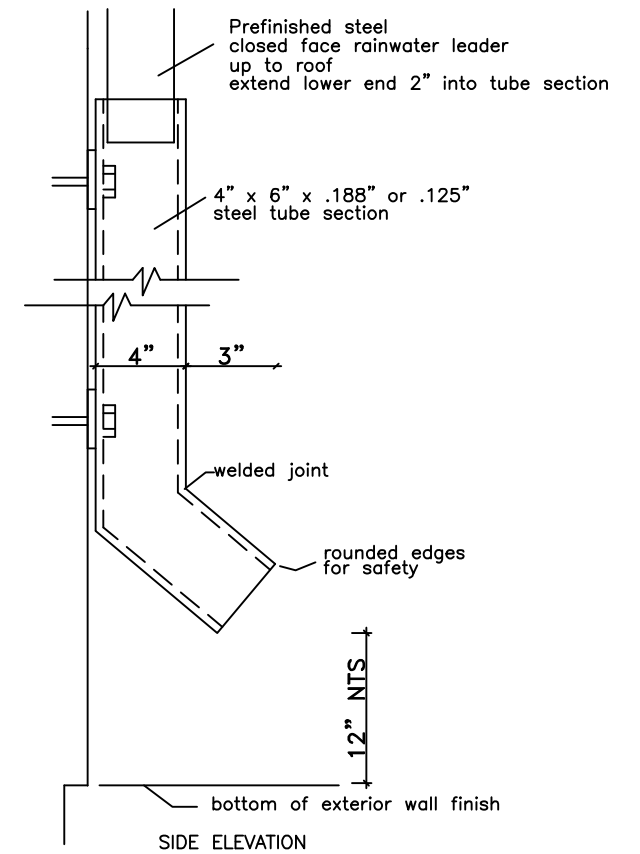
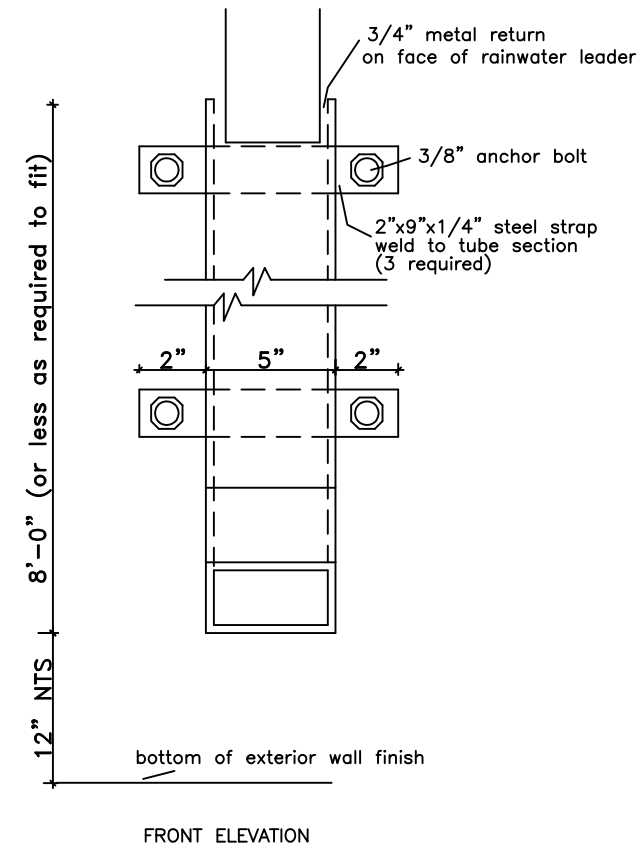


Typical Parapet / Wall

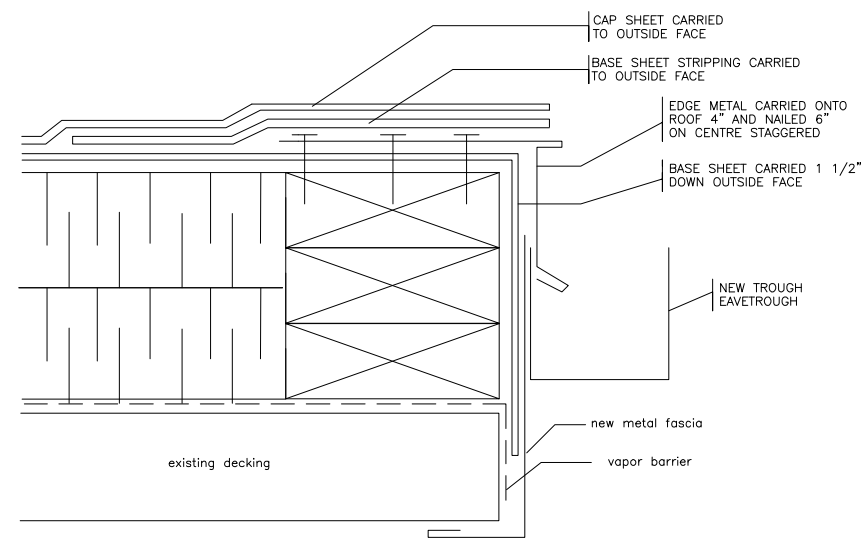


Note: Modified Bitumen stippling used in conjunction with 4 ply felt membrane is to have base sheet extend 12" onto flat and cap sheet 18" onto flat.

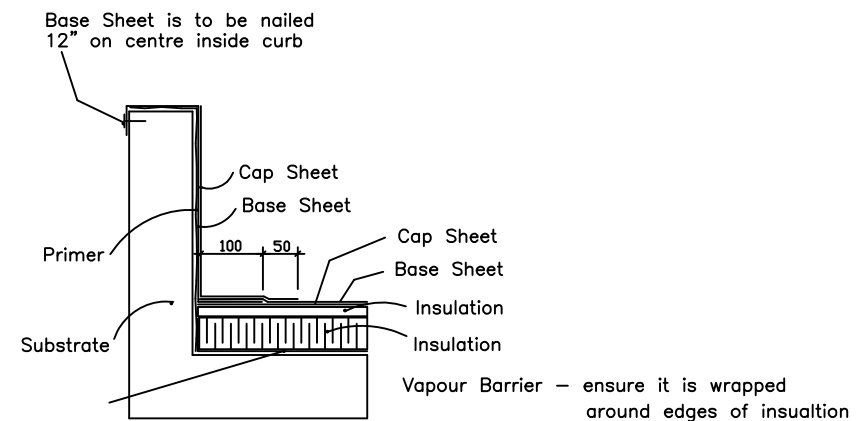
Structural Down Pipes



Eave Construction



Mechanical Curb Flashing



Note: Details are to be similar for inverted roof assemblies

AGASSIZ CONSULTING GROUP	
809 Pipeline Road, Winnipeg, Manitoba Phone: 697-8091 Fax: 697-8039	
Project:	Billy Mosienko Arena 700 Keewatin Winnipeg, MB
Date:	January 27, 2008
Drawing No.	D-1
File no:	3618-08
Scale:	N.T.S.