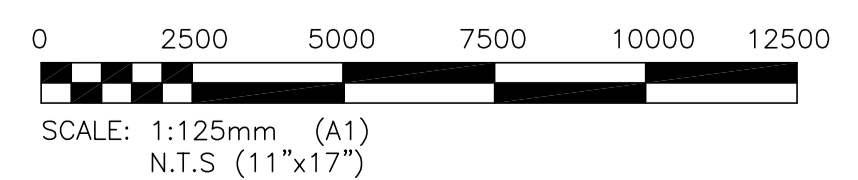


- NOTES:**
1. CAP EXISTING FLOOR DRAIN.
 2. ALL EQUIPMENT WITHIN 3m OF CLARIFIERS SHALL BE EXPLOSION PROOF.

- SEQUENCE OF INSTALLATION:**
1. INSTALL NEW HVAC EQUIPMENT INCLUDING SO2 AIR SCRUBBER TO ENSURE ROOM HAS 'CLEAN' AIR SUPPLY.
 2. SEAL ALL FLOOR, WALL AND CEILING OPENINGS TEMPORARILY.
 3. INSTALL NEW MCC'S.
 4. JUMPER FEEDERS TO EXISTING MCC 1P AND 2P TO NEW MCC'S 1P & 2P.
 5. ONE AT A TIME, TRANSFER EACH LOAD TO THE NEW MCC'S. ARRANGE SHUTDOWN WITH WATER AND WASTE DEPARTMENT STAFF FOR EACH MOTOR CONTROL CIRCUIT.
 6. WHEN ALL CIRCUITS ARE IN, SEAL ALL OPENINGS WITH A 1 HOUR FIRE RATED ASSEMBLY.



APEGM
 Certificate of Authorization
 KGS Group
 No. 245 Date: _____

B.M.	:			
ELEV.	:			
DESIGNED BY	DDW	CHECKED BY		
DRAWN BY	GCN	APPROVED BY		
HOR. SCALE:	AS NOTED	RELEASED FOR CONSTRUCTION:		
VERTICAL:	.	DATE		
NO.	REVISIONS	DATE	BY	DATE
01	ISSUED FOR TENDER	15/02/08	REW	
				25/11/06

KGS GROUP
 CONSULTING ENGINEERS & PROJECT MANAGERS

CH2MHILL

ENGINEER'S SEAL
 R.E. WILLMS
 REGISTERED PROFESSIONAL ENGINEER

CONSULTANT DRAWING NO.
 1-0101P-E0002-001

THE CITY OF WINNIPEG
 WATER AND WASTE DEPARTMENT

Winnipeg

PROJECT TITLE
 NORTH END WATER POLLUTION CONTROL CENTRE
 CLARIFIER CONTROL BUILDING
 PARTIAL ELECTRICAL ARRANGEMENT
 POWER PLAN

SHEET 001 OF 001
 COMPUTER FILE NAME
 1-0101P-E0002-001
 CITY DRAWING NUMBER
 1-0101P-E0002-001

COWLEGGEND