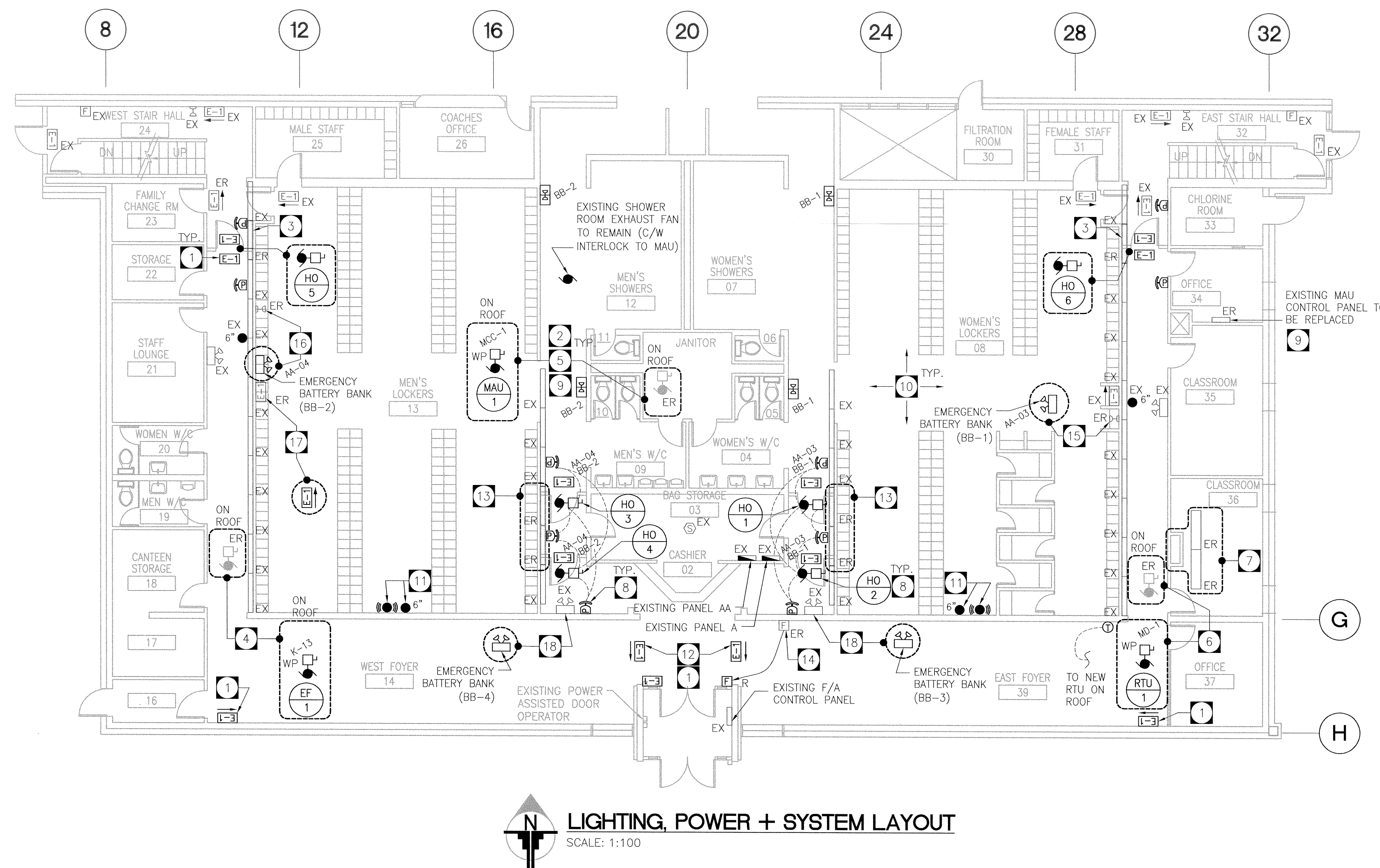


DRAWING NOTES

- 1 PROVIDE NEW EXIT SIGN AND WIRE TO SAME CIRCUIT AS THE CLOSEST EXISTING EMERGENCY BATTERY BANK AND NIGHT LIGHT CIRCUIT IN THIS AREA.
- 2 REFER TO MECHANICAL DRAWING FOR EXACT LOCATION OF ALL MECHANICAL EQUIPMENT PRIOR TO ROUGH-IN.
- 3 REMOVE EXISTING LIGHT FIXTURE AS INDICATED TO FACILITATE INSTALLATION OF NEW WALL/DOOR. REROUTE ALL UNUSED WIRING BACK TO ASSOCIATE PANEL.
- 4 MAKE ALL PROVISION TO REPLACE EXISTING EXHAUST/AIR FAN WITH NEW EXHAUST FAN (EF-1) LOCATED ON ROOF AT SAME LOCATION AS INDICATED. REUSE EXISTING POWER CIRCUIT #13 FROM EXISTING PANEL K FOR NEW EXHAUST FAN. DISCONNECT AND REMOVE EXISTING INTERLOCK TO EXISTING MAU. DISCONNECT AND REMOVE EXISTING INTERLOCK FOR FIRE ALARM SHUT DOWN.
- 5 MAKE ALL PROVISION TO REPLACE EXISTING MAU WITH NEW MAU-1 ON ROOF AT SAME LOCATION AS INDICATED. SITE CONFIRM FEEDER AND BREAKER SIZE AND REUSE EXISTING IF SUITABLE TO USE AND COMPLY WITH CEC, OTHERWISE PROVIDE NEW. REUSE EXISTING POWER CIRCUIT FROM MCC FOR NEW MAU-1. DISCONNECT EXISTING INTERLOCKS TO TWO EXHAUST AIR FANS IN THE EAST AND THE WEST CORRIDOR. RETAIN EXISTING INTERLOCK TO EXISTING EXHAUST AIR FAN IN SHOWER ROOM AND CONNECT TO NEW MAU-1.
- 6 MAKE ALL PROVISION TO REMOVE EXHAUST AIR FAN. DISCONNECT AND REMOVE POWER CIRCUIT AND REROUTE ALL UNUSED WIRING BACK TO ASSOCIATE PANEL. DISCONNECT AND REMOVE EXISTING INTERLOCK TO EXISTING MAU. DISCONNECT AND REMOVE EXISTING INTERLOCK FOR FIRE ALARM SHUT DOWN. INSTALL NEW ROOF TOP UNIT (RTU-1) AT SAME LOCATION. REFER TO SINGLE LINE DIAGRAM ON DRAWING E-2.0 FOR FEEDER INFORMATION.
- 7 MAKE ALL PROVISION TO RELOCATE EXISTING SLABBED CONDUITS AND LIGHT FIXTURES AS REQUIRED FOR INSTALLATION OF SUPPLY AIR DUCT. REFER TO MECHANICAL DRAWING FOR EXACT LOCATION OF DUCT PRIOR TO ROUGH-IN.
- 8 WIRE NEW HANDICAP DOOR OPERATORS AND PUSH BUTTONS. FOUR OPERATORS PER DOOR (REFER TO DOOR SCHEDULE ON DRAWINGS BE-1.0). CONFIRM ON SITE, WIRE AND CONNECT ALL DOOR OPERATORS TO AVAILABLE CIRCUIT FROM EXISTING PANEL AA. ANY DOOR PUSH BUTTON ON EACH SIDE OF CASHIER DESK SHALL BE WIRED TO OPERATE BOTH DOORS ON EACH SIDE SIMULTANEOUSLY.
- 9 MAKE ALL PROVISION TO REMOVE EXISTING MAU CONTROL PANEL AND REPLACE WITH NEW MAU CONTROL PANEL AT SAME LOCATION.
- 10 PRIOR TO CORING NEW HOLES, PROVIDE COMPLETE X-RAY OF AREA TO BE CORED TO ENSURE PROTECTION OF EXISTING SLABBED CONDUIT.
- 11 PROVIDE NEW 6" (150mm) FIRE ALARM BELLS IN MEN'S AND WOMEN'S LOCKER ROOMS TO MATCH EXISTING. PROVIDE NEW STROBES IN MEN'S AND WOMEN'S LOCKER ROOMS TO MATCH EXISTING.
- 12 NEW EXIT SIGNS TO BE WALL-MOUNTED ON BULK HEAD.
- 13 REMOVE 1 EXISTING LIGHT FIXTURE AND RELOCATE 1 EXISTING LIGHT FIXTURE TO MID OF 2 NEW WALLS/DOORS AS INDICATED TO FACILITATE INSTALLATION OF NEW WALLS/DOORS.
- 14 PROVIDE FIRE ALARM VERIFICATION FOR ALL NEW AND RELOCATED DEVICES AND SUBMIT VERIFICATION INSPECTION CERTIFICATE TO THE CONTRACT ADMINISTRATOR.
- 15 MAKE ALL PROVISIONS TO REMOVE EXISTING SINGLE REMOTE HEAD. INSTALL NEW EMERGENCY BATTERY BANK (BB-1) AT SAME LOCATION. WIRE AND CONNECT TO CIRCUIT #3 FROM PANEL AA. PROVIDE VOLTAGE SENSING RELAY SYSTEM FOR BB-1 TO MONITOR 2 LIGHTING CIRCUITS IN WOMEN'S LOCKER AND SHOWER AREA.
- 16 MAKE ALL PROVISIONS TO REMOVE EXISTING SINGLE REMOTE HEAD. INSTALL NEW EMERGENCY BATTERY BANK (BB-2) AT LOCATION INDICATED. WIRE AND CONNECT TO CIRCUIT #4 FROM PANEL AA. PROVIDE VOLTAGE SENSING RELAY SYSTEM FOR BB-2 TO MONITOR 2 LIGHTING CIRCUITS IN MEN'S LOCKER AND SHOWER AREA.
- 17 MAKE ALL PROVISIONS TO REMOVE EXISTING NON-DIRECTIONAL EXIT SIGN AND REPLACE WITH NEW DIRECTIONAL EXIT SIGN AT SAME LOCATION.
- 18 MAKE ALL PROVISIONS TO REMOVE EXISTING EMERGENCY BATTERY BANKS AND REPLACE WITH NEW EMERGENCY BATTERY BANKS (BB-3 & BB-4) AT SAME LOCATIONS.

DRAWING LIST	
E-10	ELECTRICAL LEGEND, LIGHTING, POWER & SYSTEM LAYOUT
E-20	ELECTRICAL SINGLE LINE DIAGRAM & MOTOR/EQUIPMENT SCHEDULES
E-30	ELECTRICAL SPECIFICATIONS

LEGEND	
	STRIP FLUORESCENT LIGHT
	1'X4' FLUORESCENT LIGHT
	EMERGENCY LIGHT (REMOTE - 1 HEADS)
	NEMA-4X CERTIFIED EMERGENCY LIGHT (REMOTE - 2 HEADS)
	EMERGENCY BATTERY UNIT C/W HEAD LIGHTS
	EXIT LIGHT C/W DIRECTIONAL ARROWS AS SHOWN
	MOTOR AND DISCONNECT
	HANDICAP PUSH BUTTON
	MANUAL PULL STATION
	6" FIRE ALARM BELL (6")
	FIRE ALARM STROBE
	SMOKE DETECTOR (ADDRESSABLE)
	POWER PANELBOARD - SURFACE MOUNT/FLUSH MOUNT
	SYSTEM PANELBOARD - SURFACE MOUNT/FLUSH MOUNT
	THERMOSTAT
ER	EXISTING TO BE REMOVED OR RELOCATED
EX	EXISTING TO REMAIN
R	RELOCATED EXISTING (SHOWN IN NEW LOCATION)



NO.	REVISIONS	DATE	BY
3	REVISED PRIOR TO TENDER	11/07/07	G.T.
2	ISSUED FOR TENDER	08/08/07	RN/TT
1	ISSUED FOR FINAL REVIEW	07/16/07	RN/TT
0	ISSUED FOR OWNER'S REVIEW	01/31/07	GH/TT

CONSULTANT

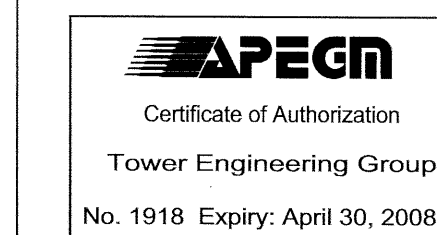
These design documents are prepared solely for the use by the party with whom the design professional has entered into a contract and there are no representations of any kind made by the design professional to any party with whom the design professional has not entered into a contract. Any use of the drawing, disk or electronic data without the expressed written permission of Tower Engineering Group is strictly prohibited. The contractor is responsible to verify all dimensions with conditions on the site and report discrepancies to Tower Engineering for adjustment. All prints to be returned.



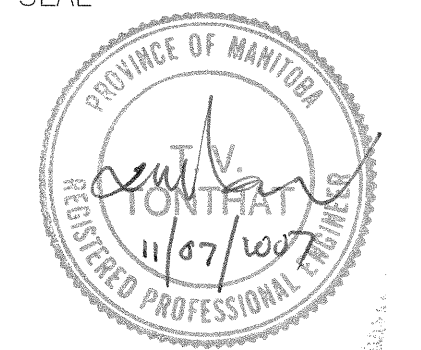
TOWER PROJECT NO. 6194

TOWER ENGINEERING GROUP
208 - 897 CORYDON AVE. WINNIPEG, MB R3M 0W7
TEL: (204) 925-1150 FAX: (204) 925-1155
EMAIL: towereng@towereng.ca WEB: www.towereng.ca

SEAL



SEAL



PROJECT

**CITY OF WINNIPEG
CENTENNIAL SWIMMING POOL
90 SINCLAIR STREET
WINNIPEG, MB**

DRAWING

**ELECTRICAL
LEGEND, LIGHTING, POWER +
SYSTEM LAYOUT**

DESIGNED:	LAN
DRAWN:	LAN
CHECKED:	TT
SCALE:	AS NOTED
DATE:	JUL 16/07
PROJECT NO.:	6194

SHEET

E-1.0

REVISION

R-3