

MOTOR/EQUIPMENT SCHEDULE

ITEM	EQUIPMENT				PKG UNIT	STARTER				CONTROLS			REMARKS	SEE NOTES BELOW		
	DESCRIPTION	LOCATION	KW/HP/AMPS	VOLTS/Ø		TYPE	FUNC	PL	PB	HOA	SUPPLY BY	TYPE			SUPPLY BY	INSTALL BY
RTU-1	ROOFTOP UNIT	ROOF OF EAST CORRIDOR	50A	208/3	Y		Y	Y		Div. 16	T	Div. 15	Div. 15	Div. 16	PROVIDE NEW THERMOSTAT (24V)	
HO-1 TO HO-6	HANDICAP DOOR OPERATOR	VARIES	FRAC.	120/1	Y					Div. 16		Div. 16	Div. 16	Div. 16		
EF-1	EXHAUST FAN	ROOF OF WEST CORRIDOR	1/4 HP	120/1			Y	Y		Div. 16	T	Div. 15	Div. 15	Div. 16		
MAU-1	MAKE-UP AIR UNIT	ROOF	5 HP	208/3	Y					Div. 16	T	Div. 15	Div. 15	Div. 16	PROVIDE NEW CONTROL PANEL. INTERLOCK TO EXISTING SHOWER ROOM EXHAUST FAN	1

GENERAL NOTES:
 A. MANUAL MOTOR STARTER TO BE C/W PILOT LIGHT AND OVERCURRENT PROTECTION.
 B. ALL STARTERS TO BE SUPPLIED & INSTALLED BY THE CONTRACTOR UNLESS OTHERWISE NOTED.
 C. DISCONNECT SWITCHES TO BE SUPPLIED & INSTALLED BY THE CONTRACTOR.
 D. CONTRACTOR TO PROVIDE CIRCUIT BREAKERS AND WIRING ACCORDING TO THE FINAL NAMEPLATES OF THE MECHANICAL EQUIPMENT AT NO COST.
 E. 15 REFERS TO DIVISION 15000; 16 REFERS TO DIVISION 16000.

MAG = MAGNETIC
 MAN = MANUAL
 VFD = VARIABLE FREQUENCY DRIVE
 TOG = MOTOR RATED TOGGLE SWITCH
 Y = YES

O = ON/OFF MANUAL CONTROL
 I = INTEGRAL CONTROL
 F = FLOW SWITCH
 T = THERMOSTAT
 H = HUMIDISTAT
 A = AQUASTAT
 DDC = COMPUTER CONTROL SYSTEM
 TC = TIMECLOCK
 MT = MANUAL TIMER
 MS = MANUAL SWITCH
 ESC = ELECTRONIC SPEED CONTROLLER

1) PROVIDE FIRE ALARM SHUT DOWN

DRAWING NOTES

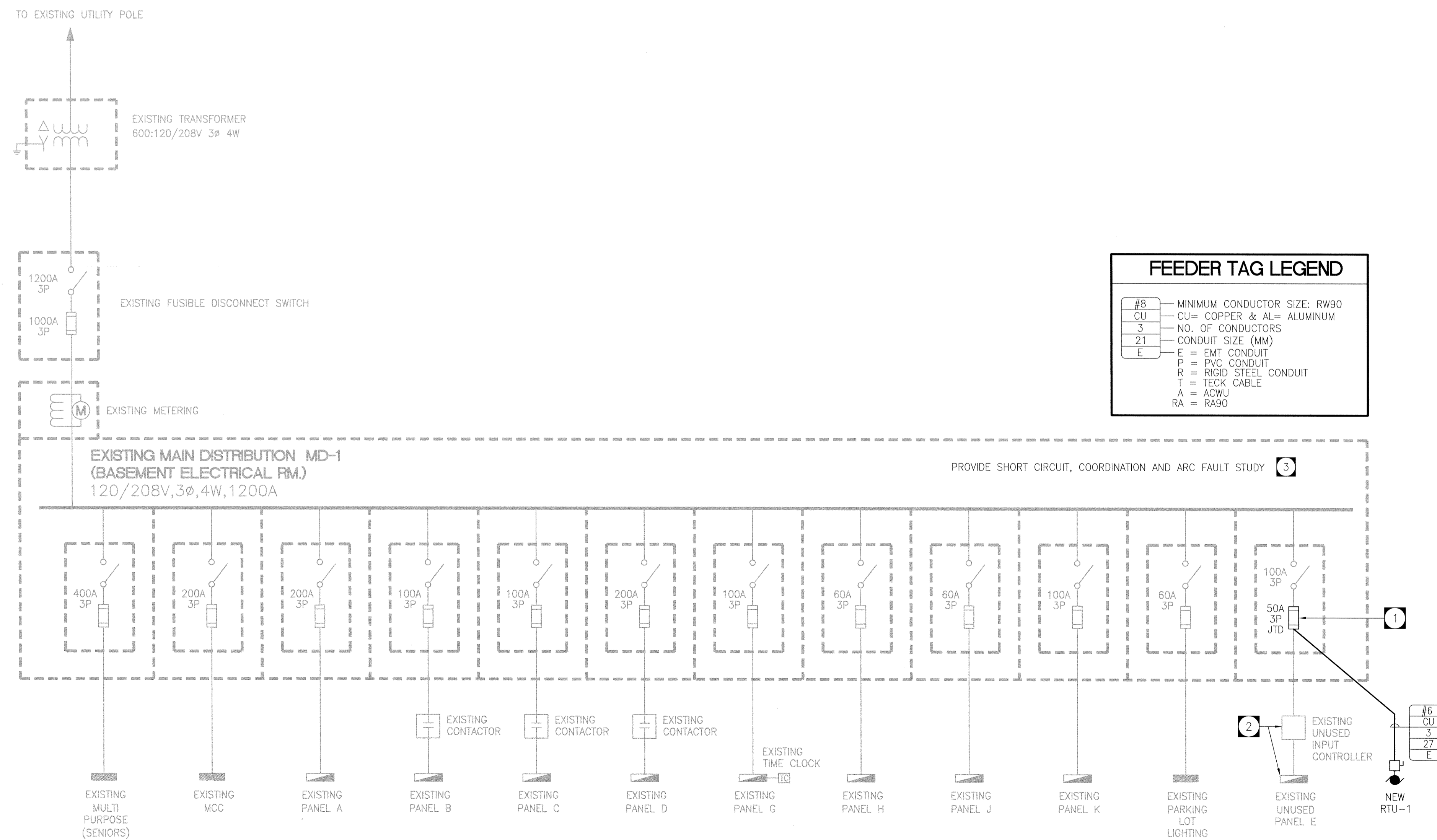
- MAKE ALL PROVISION TO REPLACE EXISTING 100A FUSE WITH 3Ø 50A TIME DELAY TYPE J FUSE C/W LUG/KIT AND REQUIRED FUSE REDUCER. PROVIDE NEW 50A LABEL ON DISCONNECT HANDLE.
- MAKE ALL PROVISIONS TO DISCONNECT AND REMOVE EXISTING UNUSED INPUT CONTROLLER AND PANEL E.
- PROVIDE A COMPLETE SHORT CIRCUIT, COORDINATION AND ARC FAULT STUDY OF ALL EXISTING AND NEW DISTRIBUTION EQUIPMENT. THE SHORT CIRCUIT, COORDINATION AND ARC FAULT STUDY SHALL BE SEALED BY A PROFESSIONAL ENGINEER LICENSED TO PRACTICE IN THE PROVINCE OF MANITOBA. THE CONTRACTOR SHALL PROVIDE ALL REQUIRED INFORMATION UPON COMPLETION OF ARC FAULT STUDY. PROVIDE SUITABLE WARNING LABELS AS PER C.E.C. 2-306.

EMERGENCY BATTERY BANK SCHEDULE

No.	MANUFACTURER	CATALOGUE NO.	INPUT VOLTS	OUTPUT VOLTS	SOURCE CIRCUIT	QUANTITIES		MINIMUM WATTAGE (x1.25)
						[E-1]	[DB]	
BB-1	LUMACELL	RGS-180-2-DR1130-10W-AT-TD-VSR-2-120-1-120-INT-PB-PL	120	6	AA-03	2	2	88
BB-2	LUMACELL	RGS-180-2-DR1130-10W-AT-TD-VSR-2-120-1-120-INT-PB-PL	120	6	AA-04	2	2	88
BB-3	LUMACELL	RGS-72-2-DR1130-10W-AT-TD	120	6	EXISTING	•	•	36
BB-4	LUMACELL	RGS-72-2-DR1130-10W-AT-TD	120	6	EXISTING	•	•	36

NOTES:
 [E-1] LUMACELL-LER770
 [DB] LUMACELL-MQM2NX-6V10W MR16

NEW AND/OR EXISTING



FEEDER TAG LEGEND

#8	MINIMUM CONDUCTOR SIZE: RW90
CU	COPPER & AL = ALUMINUM
3	NO. OF CONDUCTORS
21	CONDUIT SIZE (MM)
E	E = EMT CONDUIT P = PVC CONDUIT R = RIGID STEEL CONDUIT T = TECK CABLE A = ACWU RA = RABO

SINGLE LINE DIAGRAM

NTS

NO.	REVISIONS	DATE	BY
3	REVISED PRIOR TO TENDER	11/07/07	G.T.
2	ISSUED FOR TENDER	08/08/07	RN/TT
1	ISSUED FOR FINAL REVIEW	07/16/07	RN/TT
0	ISSUED FOR OWNER'S REVIEW	01/15/07	GH/TT

CONSULTANT

These design documents are prepared solely for the use by the party with whom the design professional has entered into a contract and there are no representations of any kind made by the design professional to any party with whom the design professional has not entered into a contract. Any use of the drawings, disk or electronic data without the expressed written permission of Tower Engineering Group is strictly prohibited.

The contractor is responsible to verify all dimensions with conditions on the site and report discrepancies to Tower Engineering for adjustment. All prints to be returned.

TOWER PROJECT NO. 6194

TOWER ENGINEERING GROUP
 208 - 897 CORYDON AVE. WINNIPEG, MB R3M 0W7
 TEL: (204) 925-1150 FAX: (204) 925-1155
 EMAIL: towereng@towereng.ca WEB: www.towereng.ca

SEAL

APEGM
 Certificate of Authorization
 Tower Engineering Group
 No. 1918 Expiry: April 30, 2008

PROVINCE OF MANITOBA
 TOWER ENGINEERING GROUP
 REGISTERED PROFESSIONAL ENGINEER
 11/07/06

PROJECT

**CITY OF WINNIPEG
 CENTENNIAL SWIMMING POOL**
 90 SINCLAIR STREET
 WINNIPEG, MB

DRAWING

**ELECTRICAL
 SINGLE LINE DIAGRAM
 + MOTOR EQUIPMENT SCHEDULES**

DESIGNED:	LAN	SHEET	E-2.0 REVISION R-3
DRAWN:	LAN		
CHECKED:	TT		
SCALE:	AS NOTED		
DATE:	JUL 16/07		
PROJECT NO.:	6194		