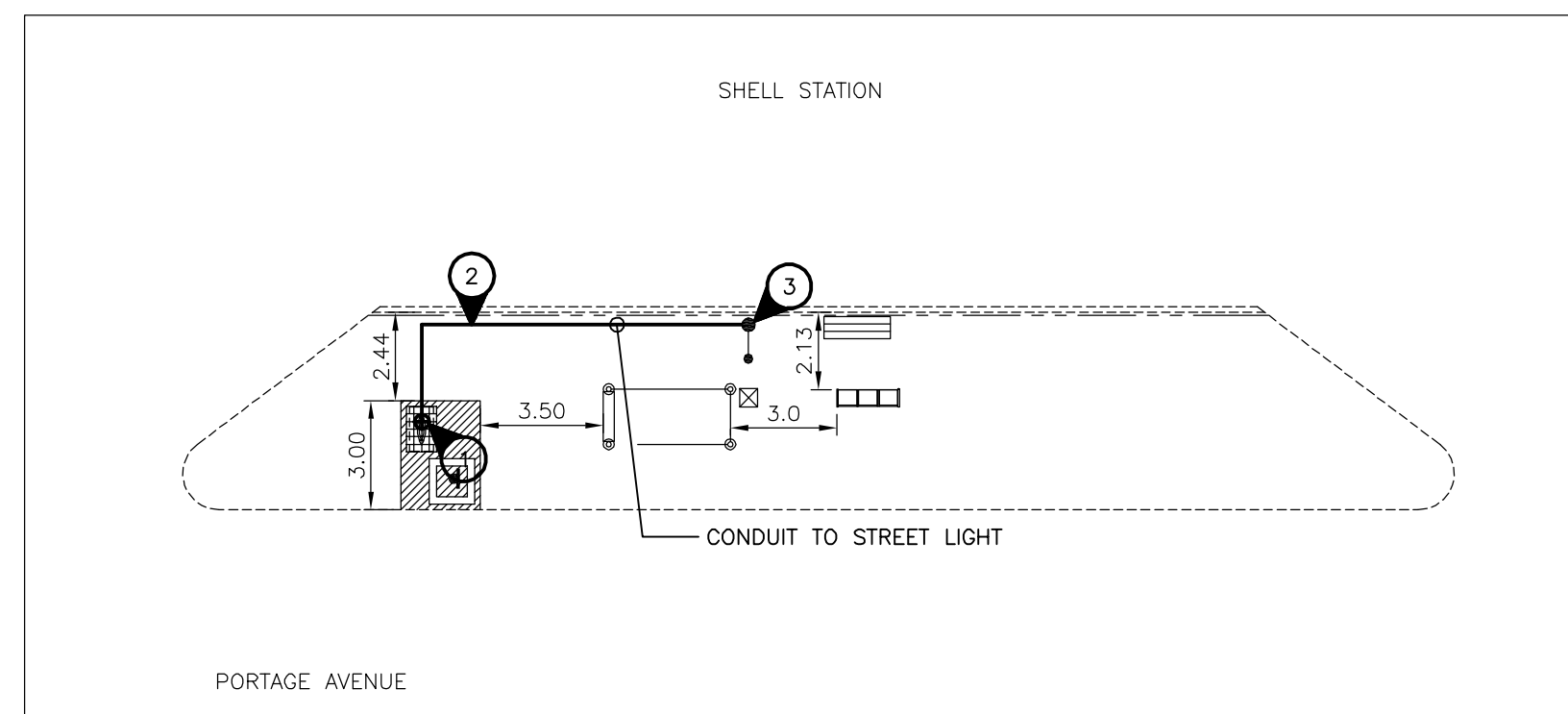
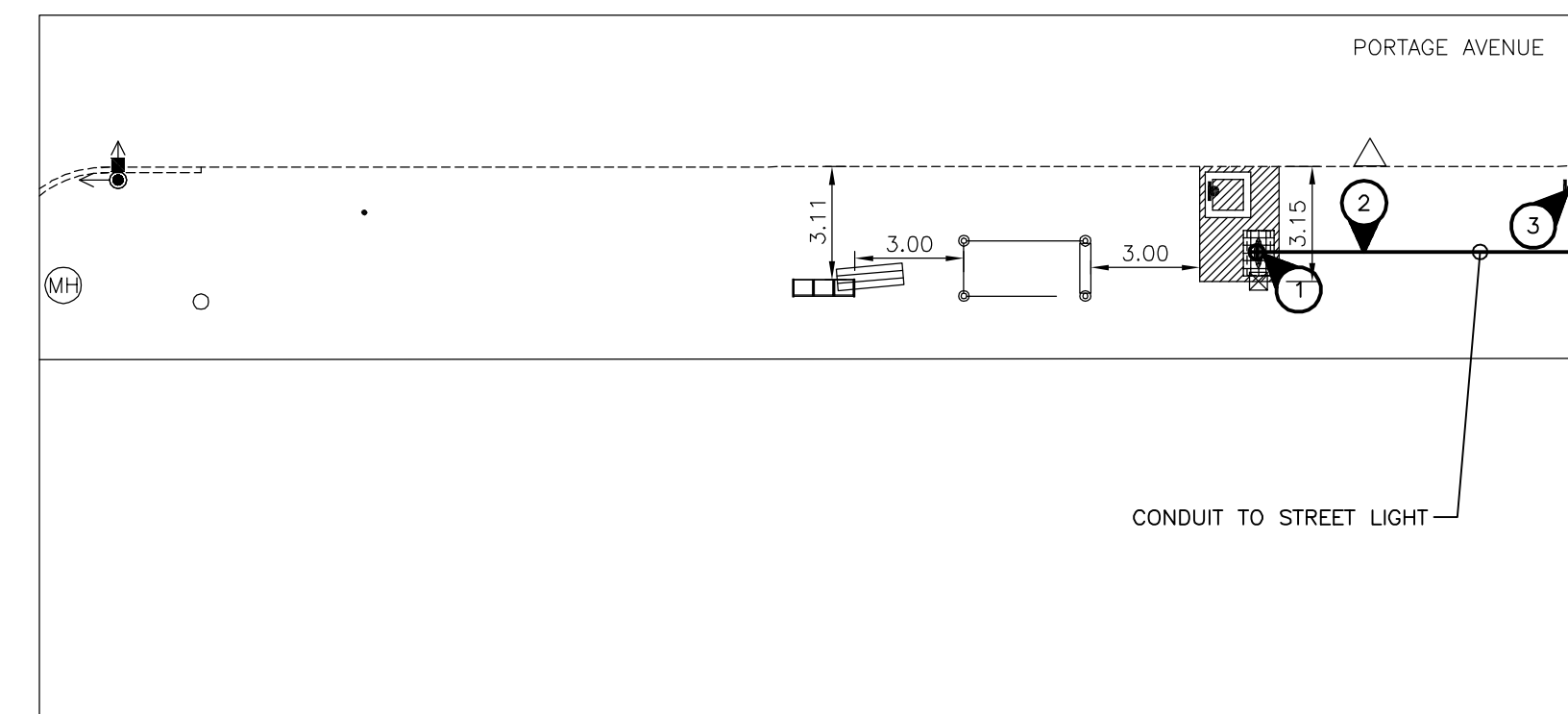


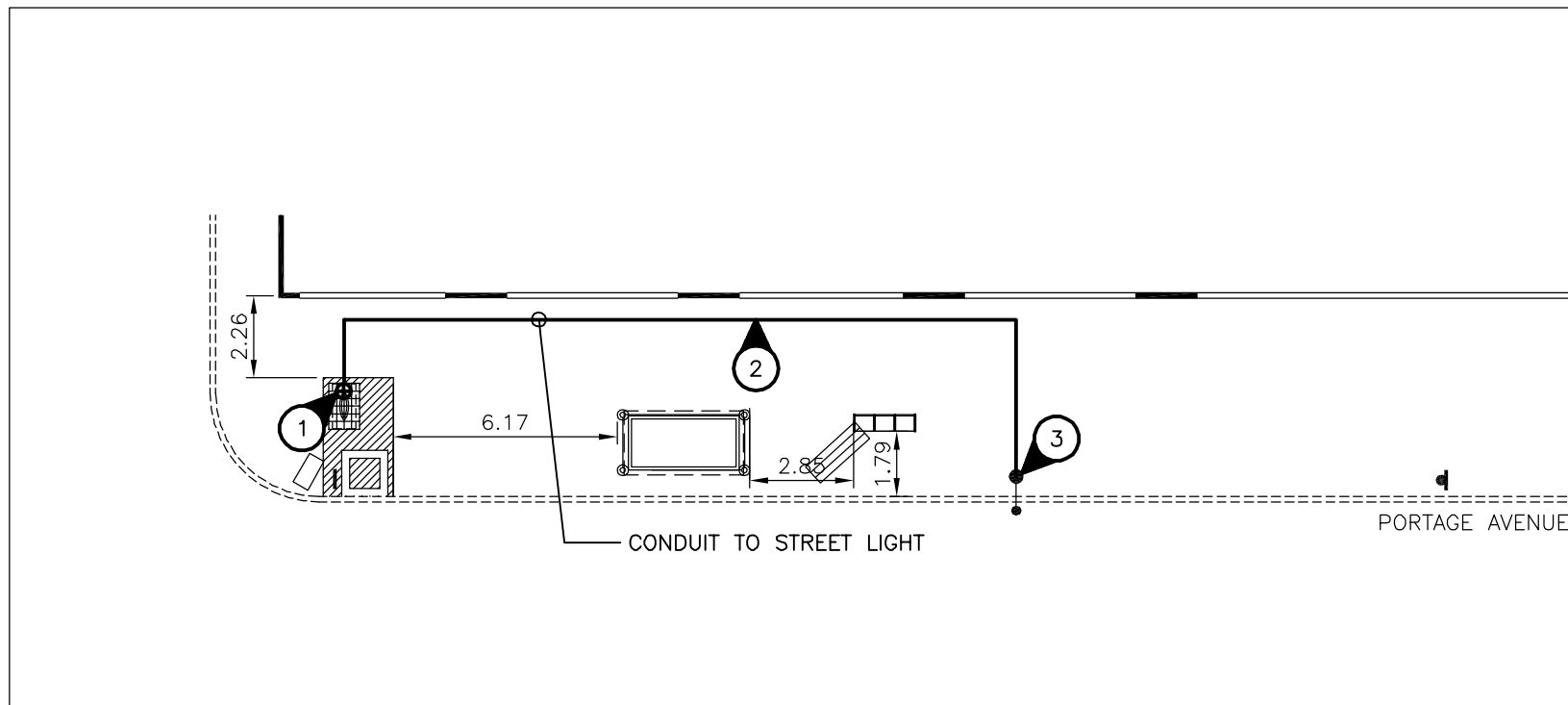
Eastbound Portage, N/S Maryland
Stop 10576 Maryland



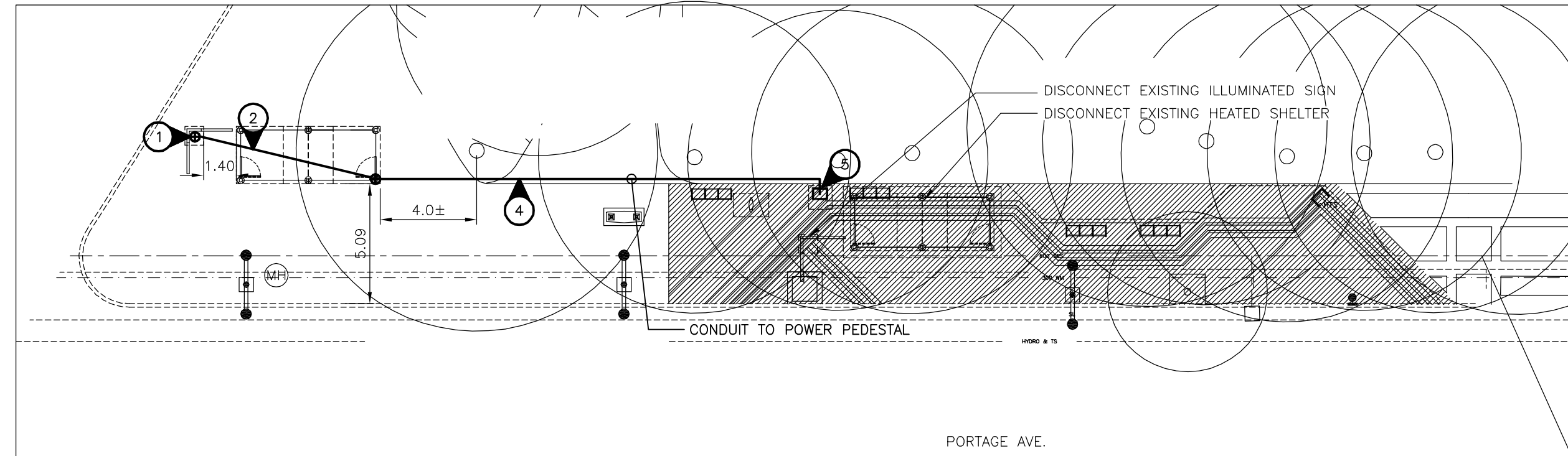
Westbound Portage, N/S McGee
Stop 10549 Maryland



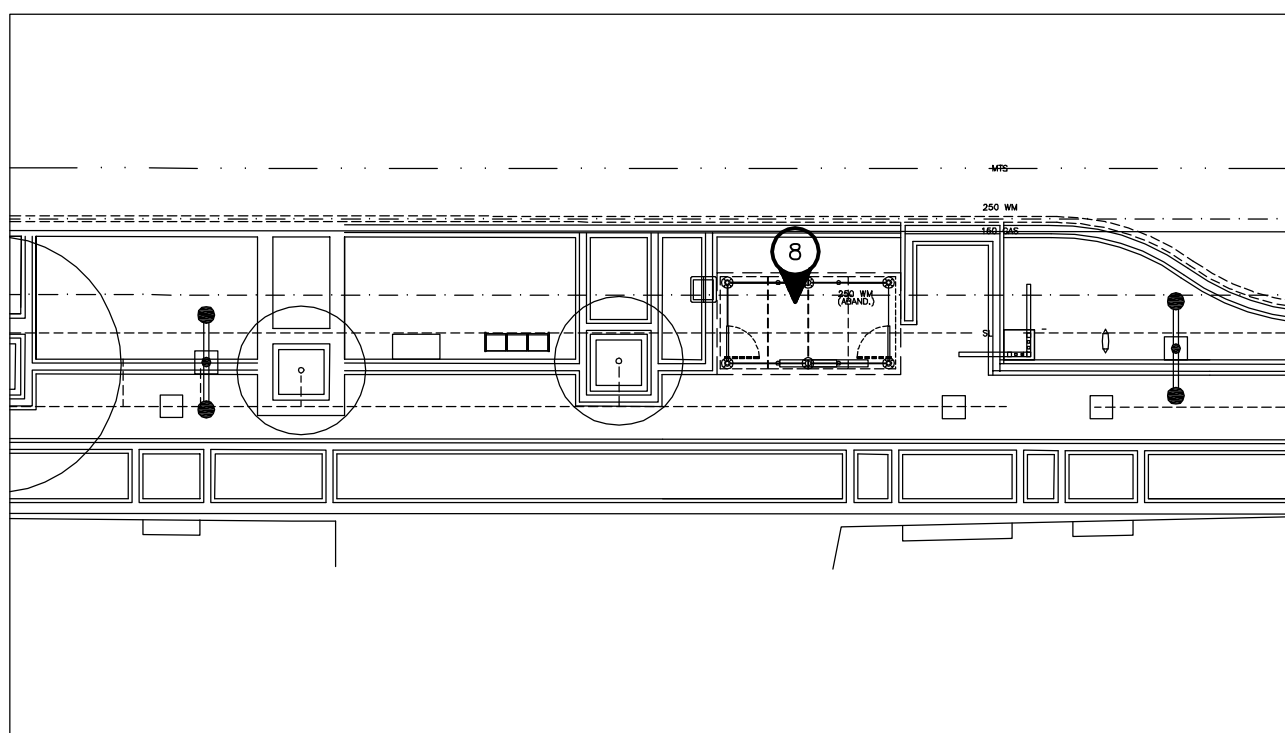
Westbound Portage, F/S Sherbrook
Stop 10577 Sherbrook



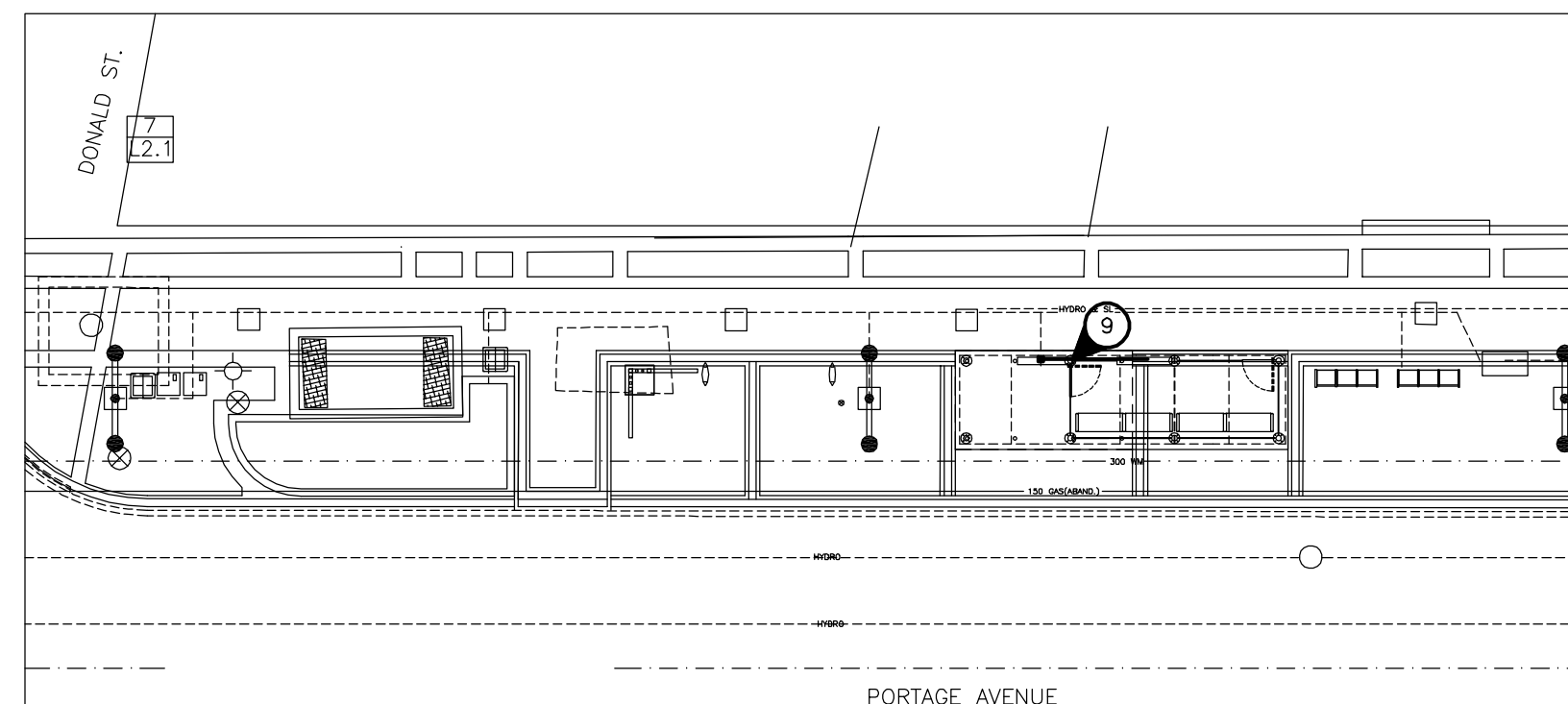
Westbound Portage, N/S Sherbrook
Stop 10548 Sherbrook



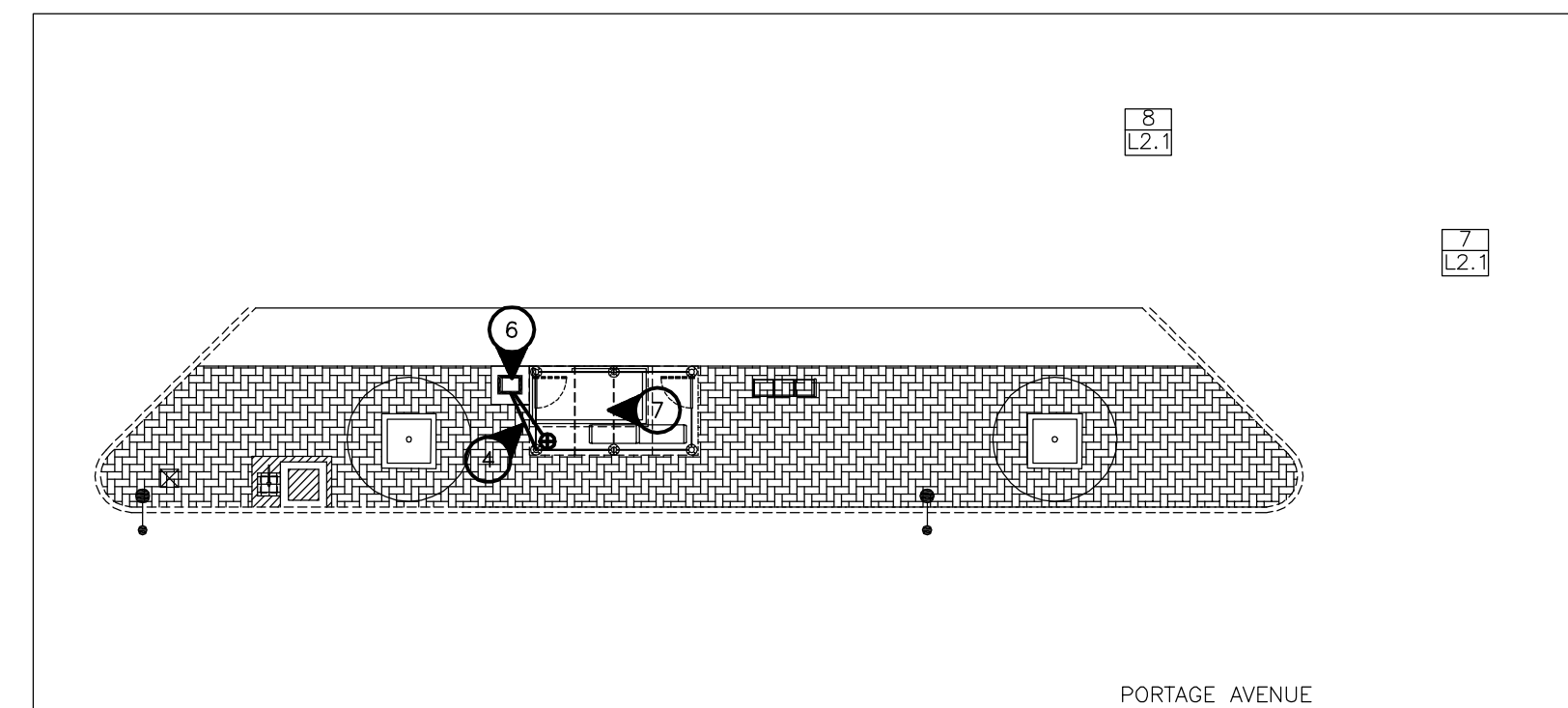
Westbound Portage, N/S Spence
Stop 10546 Spence



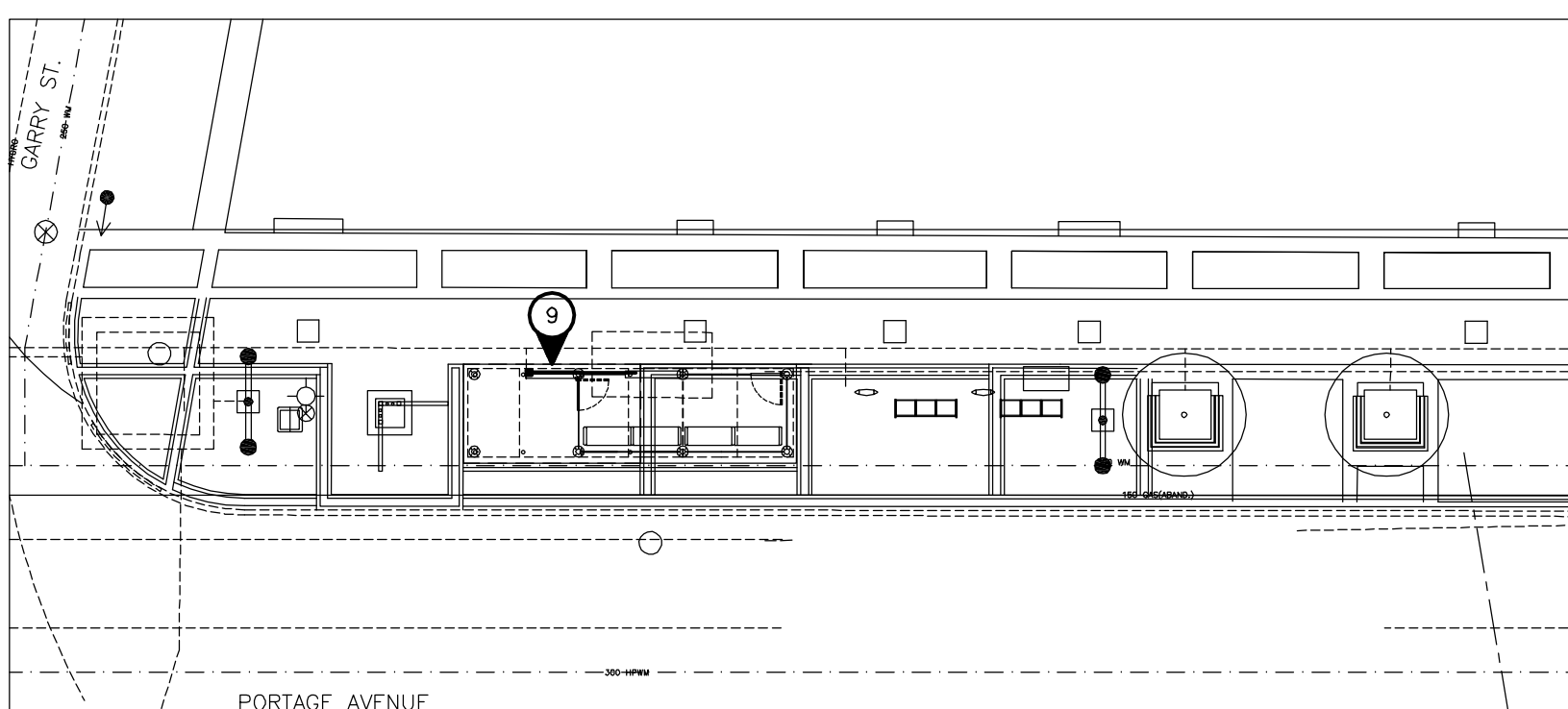
Eastbound Portage, N/S Edmonton
Stop 10581 Edmonton



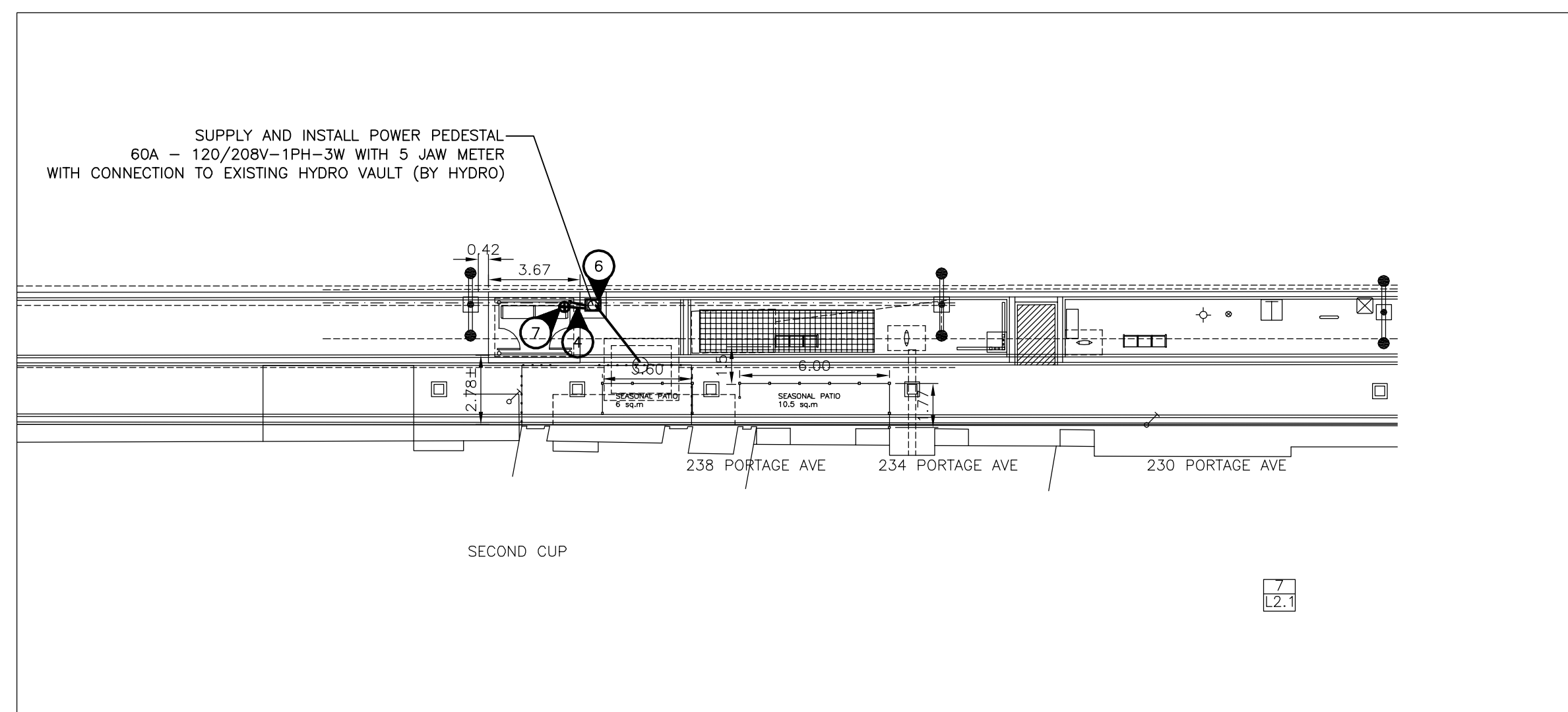
Westbound Portage, N/S Donald
Stop 10542 (MTS Centre)



Eastbound Portage, N/S Langside
Stop 10578 Langside



Westbound Portage, N/S Garry
Stop 10541 Garry



Eastbound Portage, N/S Fort
Stop 10583 Fort



SPECIFIC ELECTRICAL NOTES

- 1 WIRE & CONNECT ILLUMINATED TRANSIT SIGN AS REQUIRED. COORDINATE EXACT LOCATION AND REQUIREMENTS WITH SIGNAGE SUPPLIER.
- 2 BURIED 2 #12 RWU-90 CU AND GROUND IN A 25mm RIGID PVC CONDUIT. PROVIDE TRENCHING, BACKFILLING AND SURFACE REPAIR AS REQUIRED. PUSH BELOW SURFACE WHERE PRACTICAL. PURCHASE CONDUIT FROM MB HYDRO.
- 3 CONNECT NEW SIGN TO EXISTING STREET LIGHT/SERVICE POLE INDICATED. PROVIDE A 15A-2P WEATHER-PROOF SERVICE ENTRANCE RATED DISCONNECT AT SIGN (240V-1PH). FPE RH 102-2.
- 4 3#12 AND 4#10 RWU90 CU AND GROUND IN A 32MM RIGID PVC CONDUIT.
- 5 CONNECT NEW SIGN AND TRANSIT SHELTER LIGHTING AND HEATING CIRCUITS TO EXISTING POWER PEDESTAL. PROVIDE ONE 15A-1P C.B. FOR SHELTER LIGHTING AND ONE FOR SIGN LIGHTING. PROVIDE ONE 30A-2P AND ONE 15A-2P C.B. FOR HEATING, OR AS REQUIRED FOR ACTUAL HEATING LOAD. ALL C.B.'S TO MATCH EXISTING.
- 6 CONNECT NEW SIGN AND TRANSIT SHELTER LIGHTING AND HEATING CIRCUITS TO NEW POWER PEDESTAL 'A'. SEE DETAIL ON DRAWING E-1. CONNECT NEW PEDESTAL TO MB HYDRO SERVICE POINT WITH 3#6 RWU90 CU IN 25MM RIGID PVC CONDUIT AT PEDESTAL LOCATION.
- 7 CONNECT NEW TRANSIT SHELTER LIGHTING AND HEATING CIRCUITS TO NEW POWER PEDESTAL AS REQUIRED. COORDINATE POWER ACCESS WITH SUPPLIER.
- 8 DISCONNECT EXISTING HEATED SHELTER AND PROTECT WIRES FOR REINSTALLATION. EXISTING WIRING AND C.B.'S MAY BE REUSED IF IN GOOD CONDITION AND SIZED CORRECTLY FOR NEW LOADS. CONNECT NEW SHELTER FOLLOWING INSTALLATION.
- 9 DISCONNECT EXISTING SHELTER HEATERS, LIGHTS AND AD BOX. EXTEND WIRING AS REQUIRED TO NEW SHELTER LOCATION. RECONNECT AD BOX IN NEW LOCATION. CONNECT NEW SHELTER HEATERS AND LIGHTS. EXISTING WIRING AND C.B.'S MAY BE REUSED IF IN GOOD CONDITION AND SIZED CORRECTLY FOR NEW LOADS.

GENERAL ELECTRICAL NOTES

1. INSTALL JUNCTION BOX IN SHELTER TO PROVIDE POWER FOR LIGHTING AND HEATING CIRCUITS.
2. LABEL ELECTRICAL CIRCUIT AND DEVICES WITH LAMACOID PLATES.
3. LOCATE ALL EXISTING U/G SERVICES PRIOR TO TRENCHING.
4. MINIMUM WIRE SIZE #12.
5. CONFIRM ALL POWER CONNECTION POINTS WITH ASSOCIATED UTILITY/THE CITY.

No.	Revisions	Date	By
1	ADDENDUM	04.18.08	DZ
Date			
04-18-08		1:200	
Designed By	Drawn By	Checked By	
DZ/SL	SL	VJT	

Seals

V. J. THIELMANN
REGISTERED ENGINEER

APEGM
Certificate of Authorization
Nova 3 Engineering Ltd.
No. 962 Date: _____

McGOWAN RUSSELL
Client

WINNIPEG TRANSIT
Project Title
BUS STOP UPGRADE PROGRAM PHASE 3 ELECTRICAL WORKS
Sheet Title
PORTAGE AVENUE STOPS LAYOUT PLANS 2 OF 2
Project No. 28-090
Drawing No. E-2

NOVA 3 ENGINEERING LTD.
CONSULTING ENGINEERS
201-120 FORT STREET
WINNIPEG, MANITOBA
R3C 1C7
TEL.: (204) 943-6142
FAX.: (204) 942-1276
J.N.: 28-090
THIS DRAWING IS THE EXCLUSIVE PROPERTY OF NOVA 3 ENGINEERING LTD. AND MAY ONLY BE REPRODUCED WITH THE WRITTEN PERMISSION OF NOVA 3 ENGINEERING LTD. THE CONCEPT AND DESIGN INCORPORATED INTO THIS DRAWING ARE BASED ON INFORMATION PROVIDED BY THE CLIENT AND OTHER RELATED SOURCES. PROFESSIONAL ENGINEER ACCEPTS NO RESPONSIBILITY FOR DRAWING AND DESIGN UNLESS DRAWING IS ACCOMPANIED BY ORIGINAL SEALED AND SIGNED LETTER OF INTENT AND CERTIFICATE OF INSPECTION. REFER TO WWW.NOVA3.CA FOR CAUTIONARY NOTES.