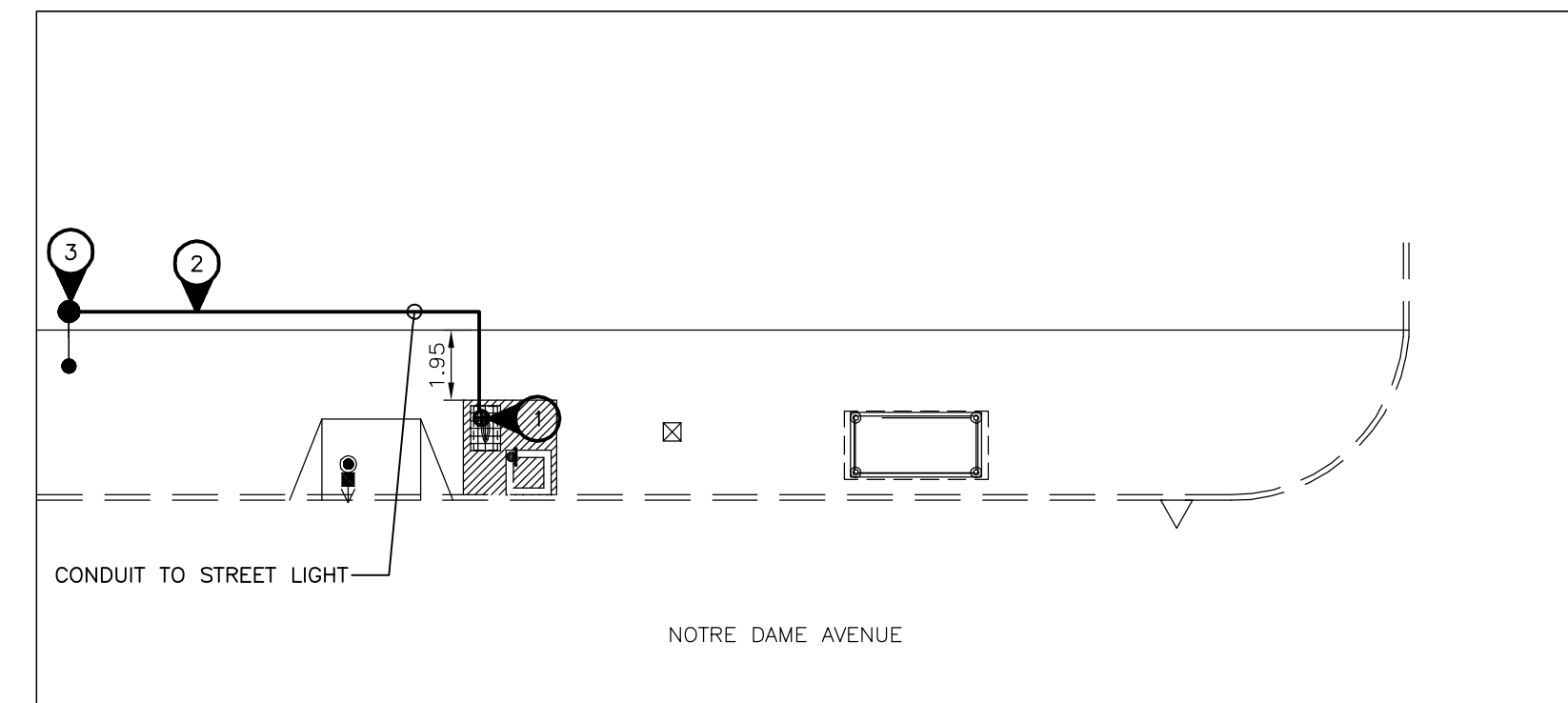
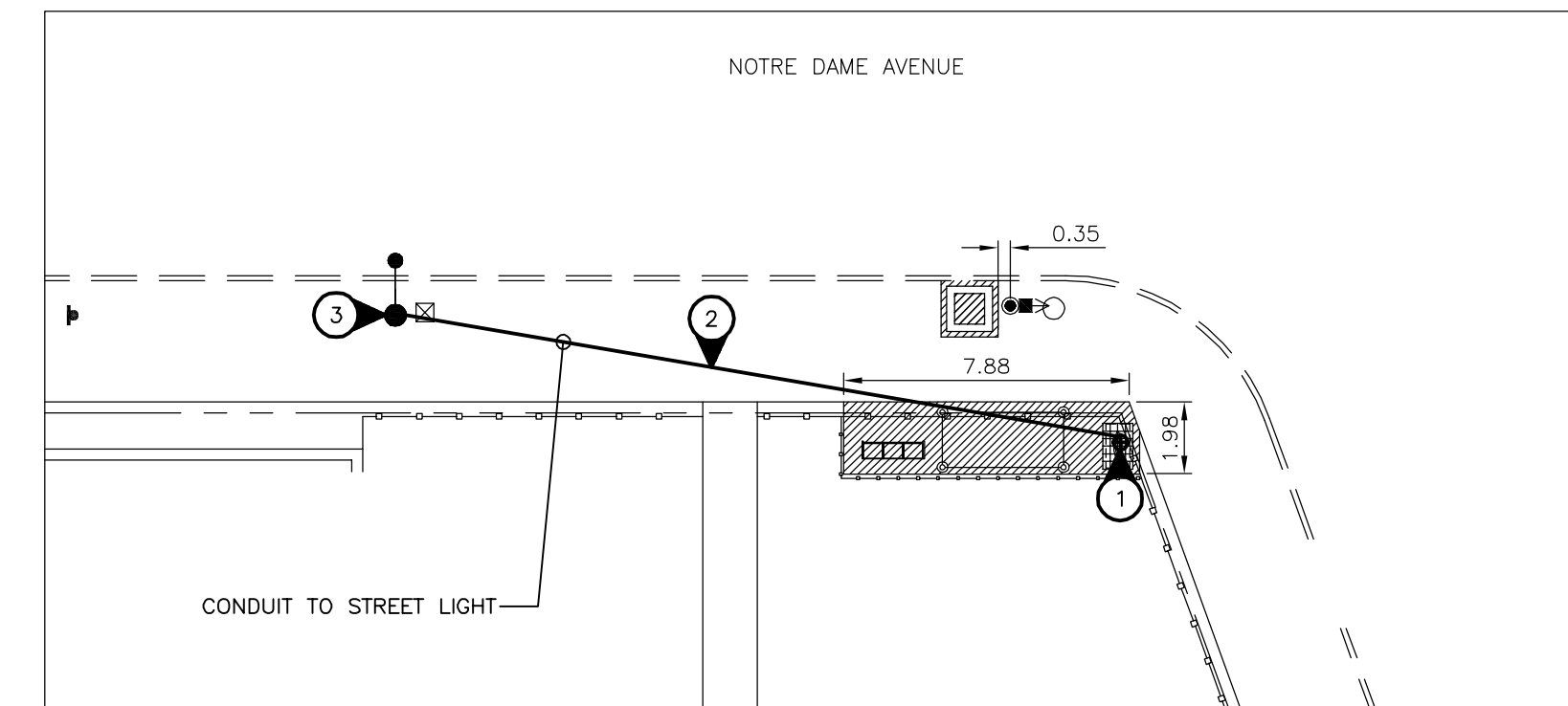


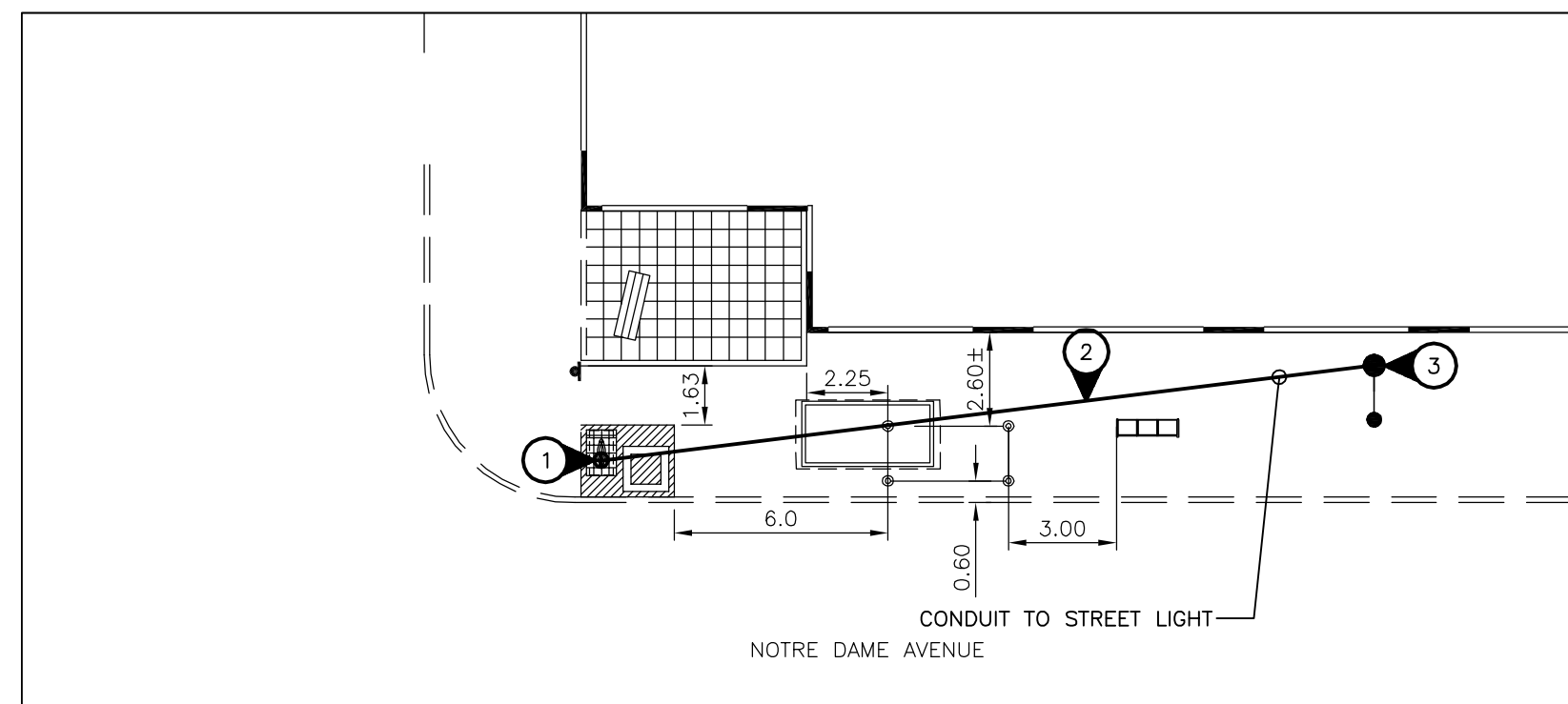
Eastbound Notre Dame, N/S Wall
Stop 10407 Wall



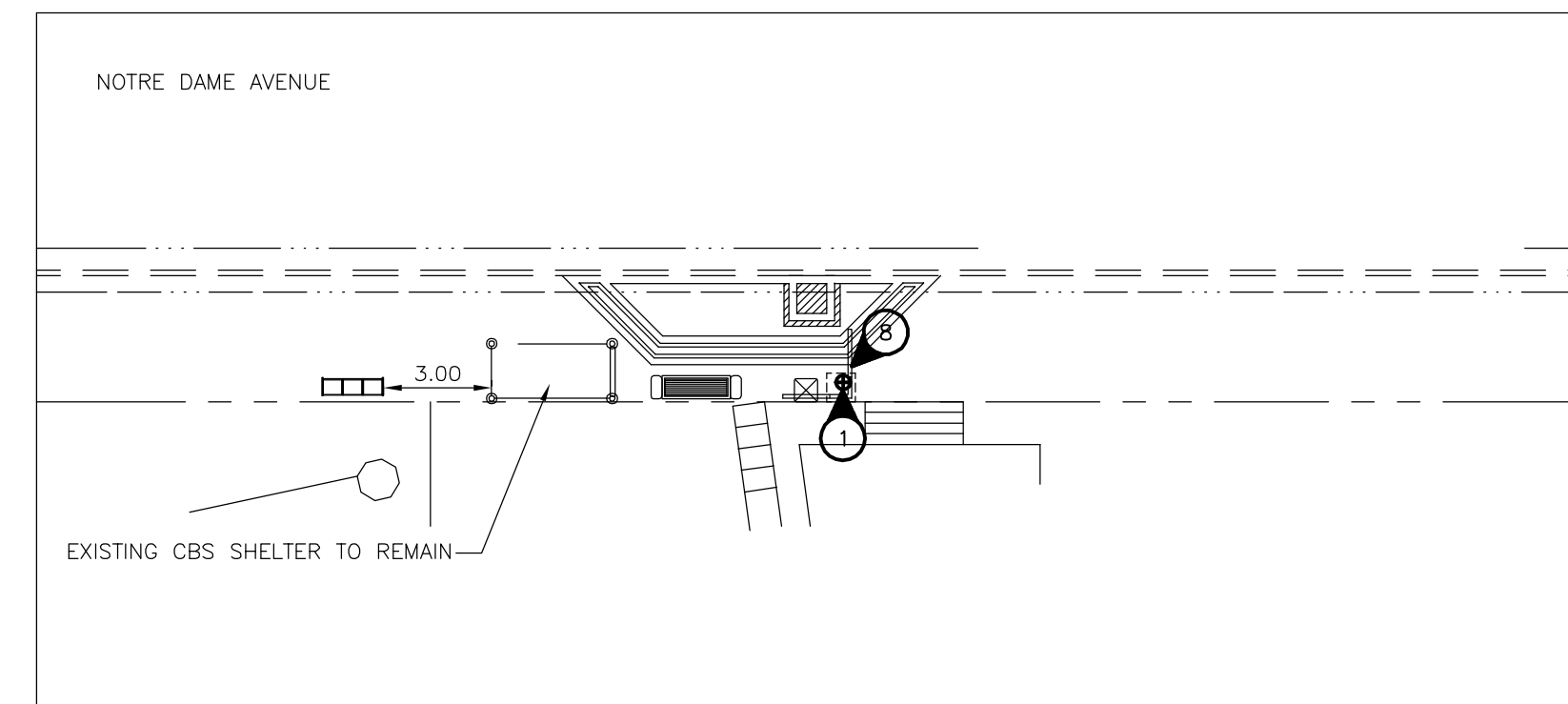
Westbound Notre Dame, N/S Wall
Stop 10406 Wall



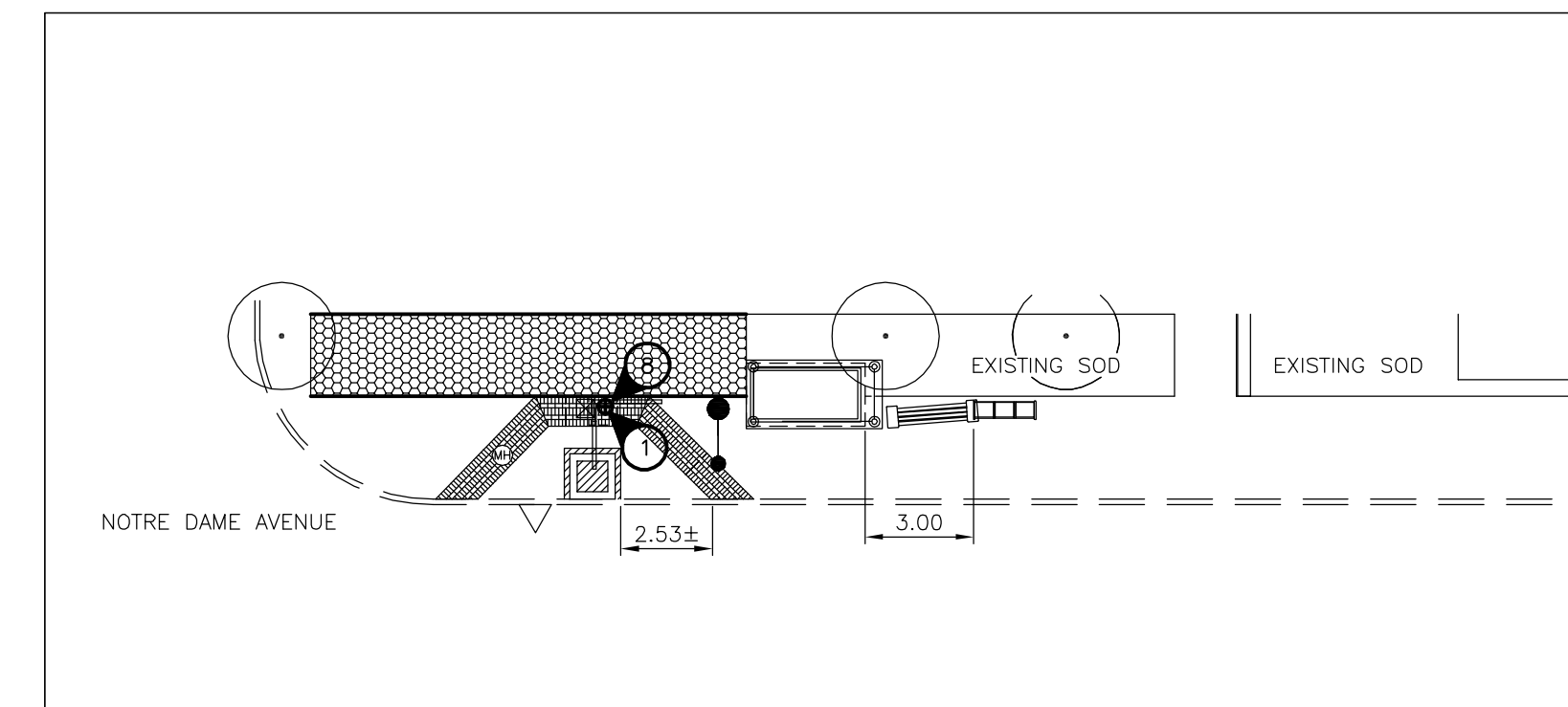
Eastbound Notre Dame, N/S Arlington
Stop 10789 Arlington



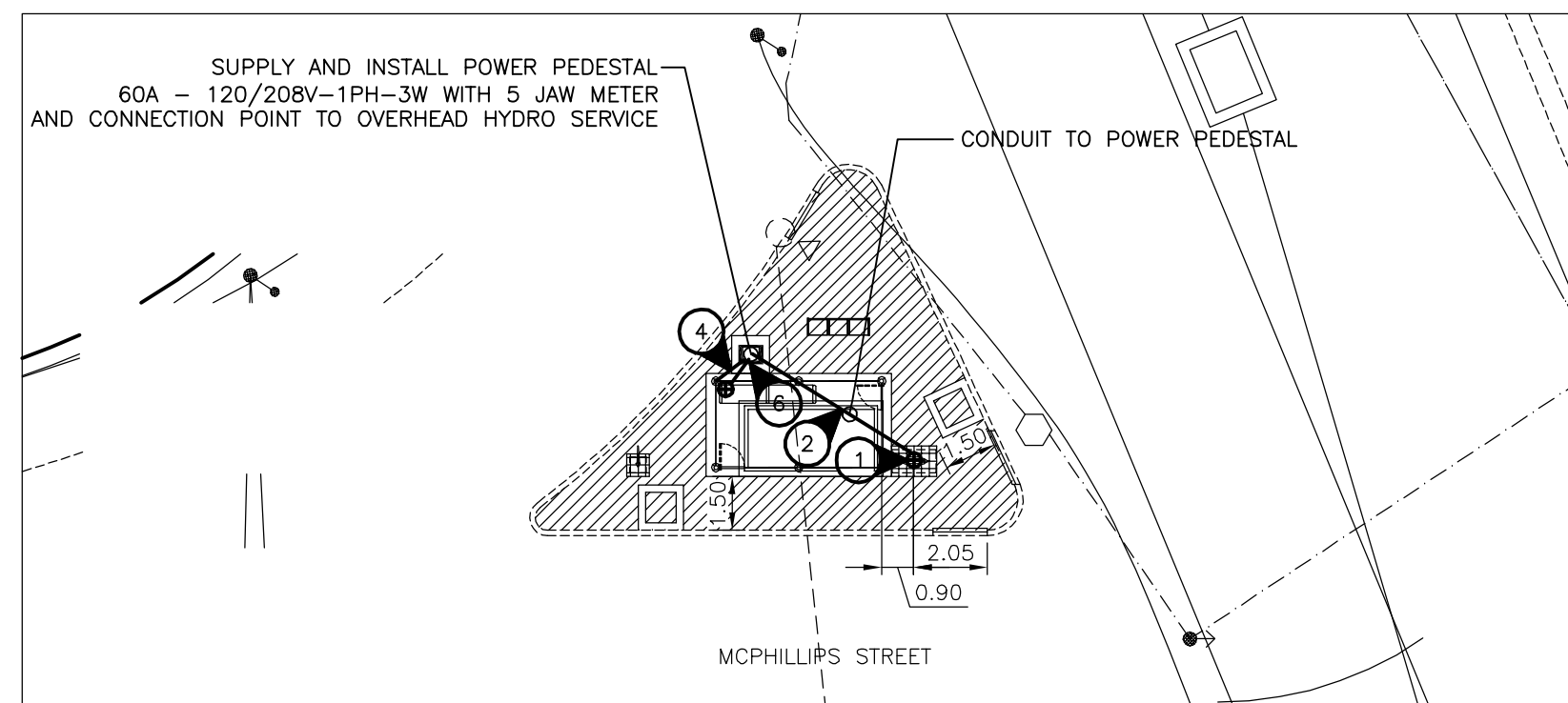
Westbound Notre Dame, N/S Arlington
Stop 10417 Arlington



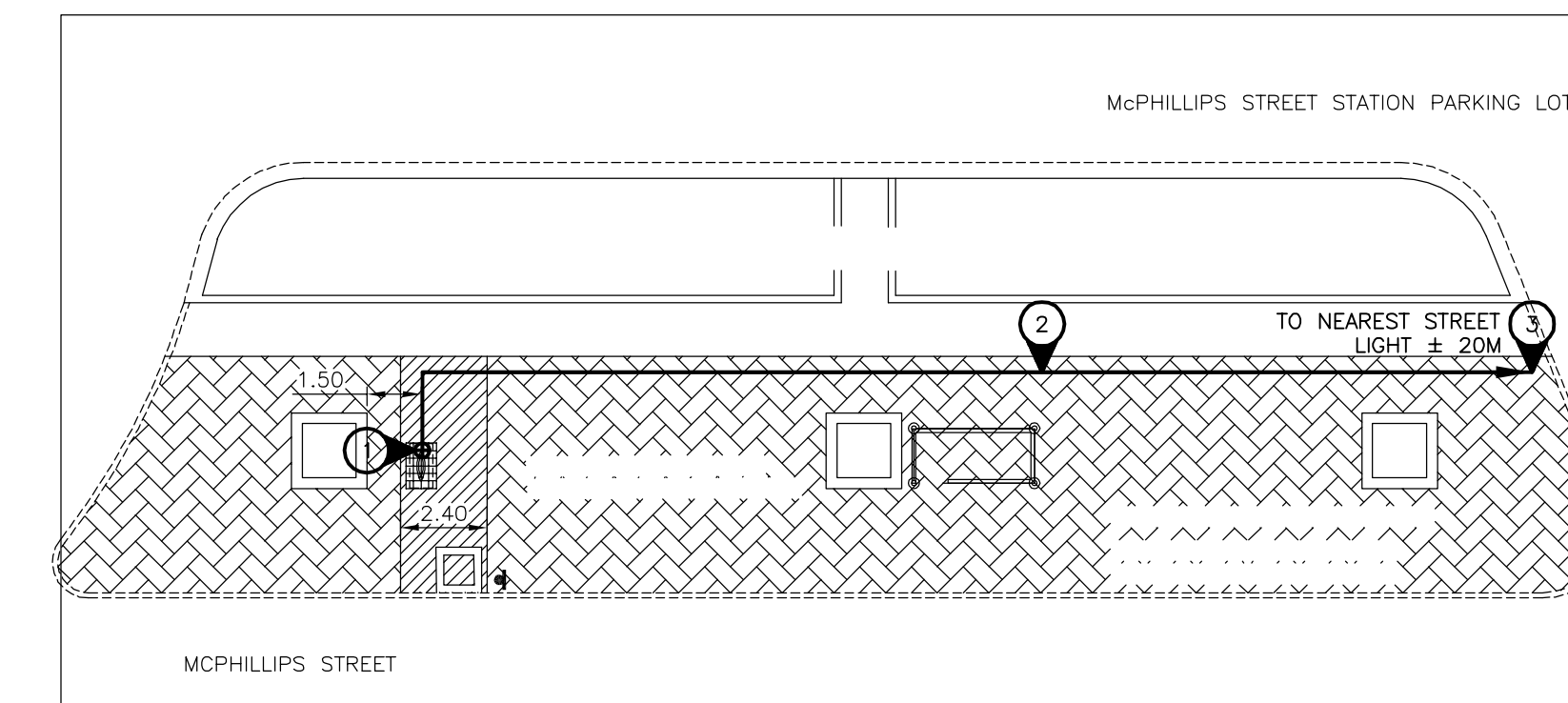
Eastbound Notre Dame, F/S McGee
Stop 10422 McGee (Health Sciences Centre)



Westbound Notre Dame, N/S Pearl
Stop 10423 Pearl



Southbound McPhillips, N/S Logan
Stop 10302 Logan



Southbound McPhillips, F/S Jarvis
Stop 30339 Jarvis



SPECIFIC ELECTRICAL NOTES

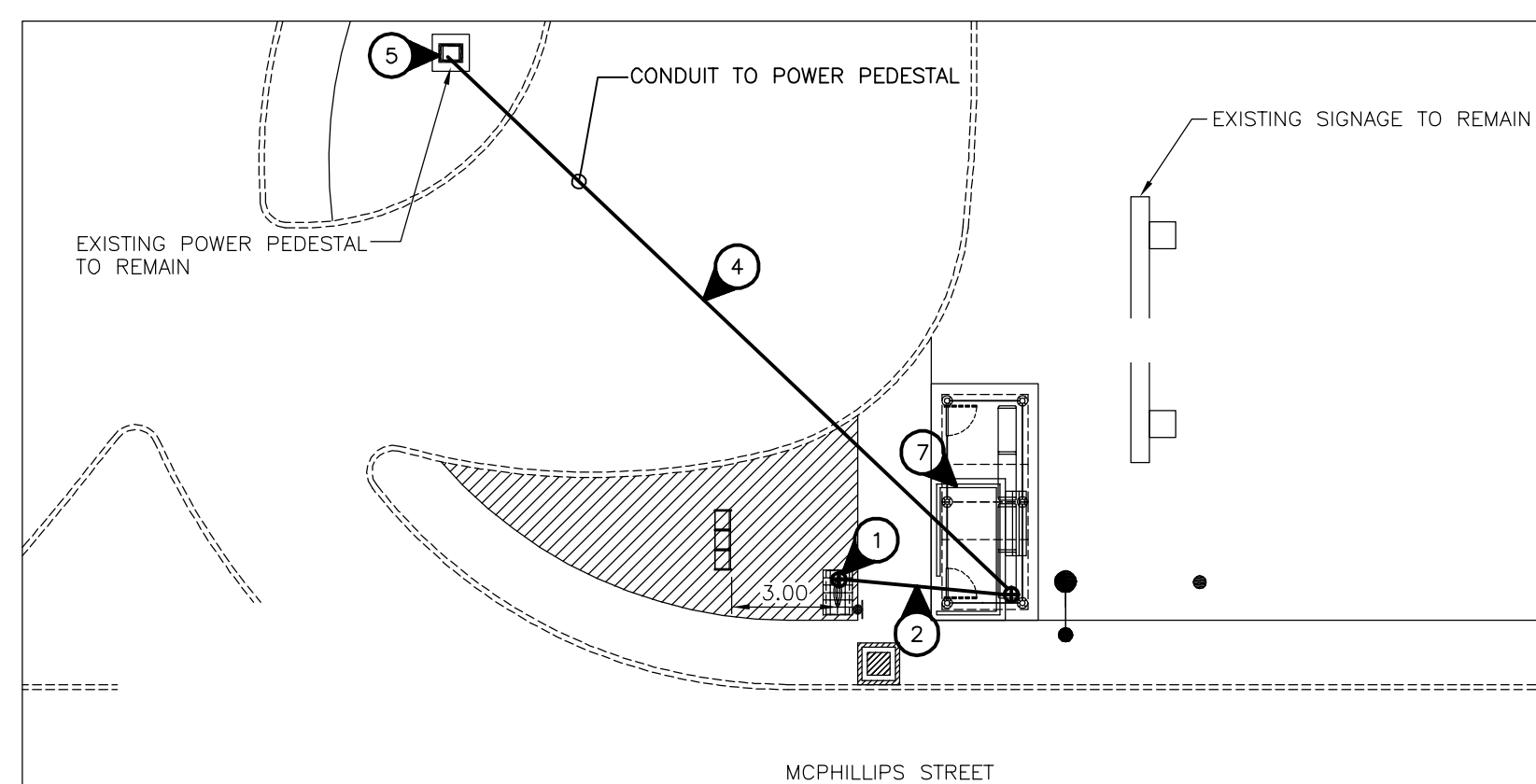
- 1 WIRE & CONNECT ILLUMINATED TRANSIT SIGN AS REQUIRED. COORDINATE EXACT LOCATION AND REQUIREMENTS WITH SIGNAGE SUPPLIER.
- 2 BURIED 2 #12 RWU-90 CU AND GROUND IN A 25mm RIGID PVC CONDUIT. PROVIDE TRENCHING, BACKFILLING AND SURFACE REPAIR AS REQUIRED. PUSH BELOW SURFACE WHERE PRACTICAL. PURCHASE CONDUIT FROM MB HYDRO.
- 3 CONNECT NEW SIGN TO EXISTING STREET LIGHT INDICATED. PROVIDE A 15A-2P WEATHER-PROOF SERVICE ENTRANCE RATED DISCONNECT AT SIGN (240V-1PH). FPE RH 102-2.
- 4 3#12 AND 4#10 RWU90 CU AND GROUND IN A 32MM RIGID PVC CONDUIT.
- 5 CONNECT NEW SIGN AND TRANSIT SHELTER LIGHTING AND HEATING CIRCUITS TO EXISTING POWER PEDESTAL. PROVIDE ONE 15A-1P C.B. FOR SHELTER LIGHTING AND ONE FOR SIGN LIGHTING. PROVIDE ONE 30A-2P AND ONE 15A-2P C.B. FOR HEATING, OR AS REQUIRED FOR ACTUAL HEATING LOAD. ALL C.B.'S TO MATCH EXISTING.
- 6 CONNECT NEW SIGN AND TRANSIT SHELTER LIGHTING AND HEATING CIRCUITS TO NEW POWER PEDESTAL 'A'. SEE DETAIL THIS DRAWING. CONNECT NEW PEDESTAL TO MB HYDRO OVERHEAD SERVICE POINT WITH 3#6 RWU90 CU IN 25MM RIGID PVC CONDUIT. PAY UTILITY CONTRIBUTION CHARGES.
- 7 CONNECT NEW TRANSIT SHELTER LIGHTING AND HEATING CIRCUITS TO NEW POWER PEDESTAL AS REQUIRED. COORDINATE POWER ACCESS WITH SUPPLIER.
- 8 DISCONNECT EXISTING SIGN AND PROTECT WIRES FOR REINSTALLATION. CONNECT NEW SIGN FOLLOWING INSTALLATION. EXISTING WIRING MAY BE REUSED IF IN GOOD CONDITION AND ACCEPTABLE TO LOCAL AUTHORITY HAVING JURISDICTION.

GENERAL ELECTRICAL NOTES

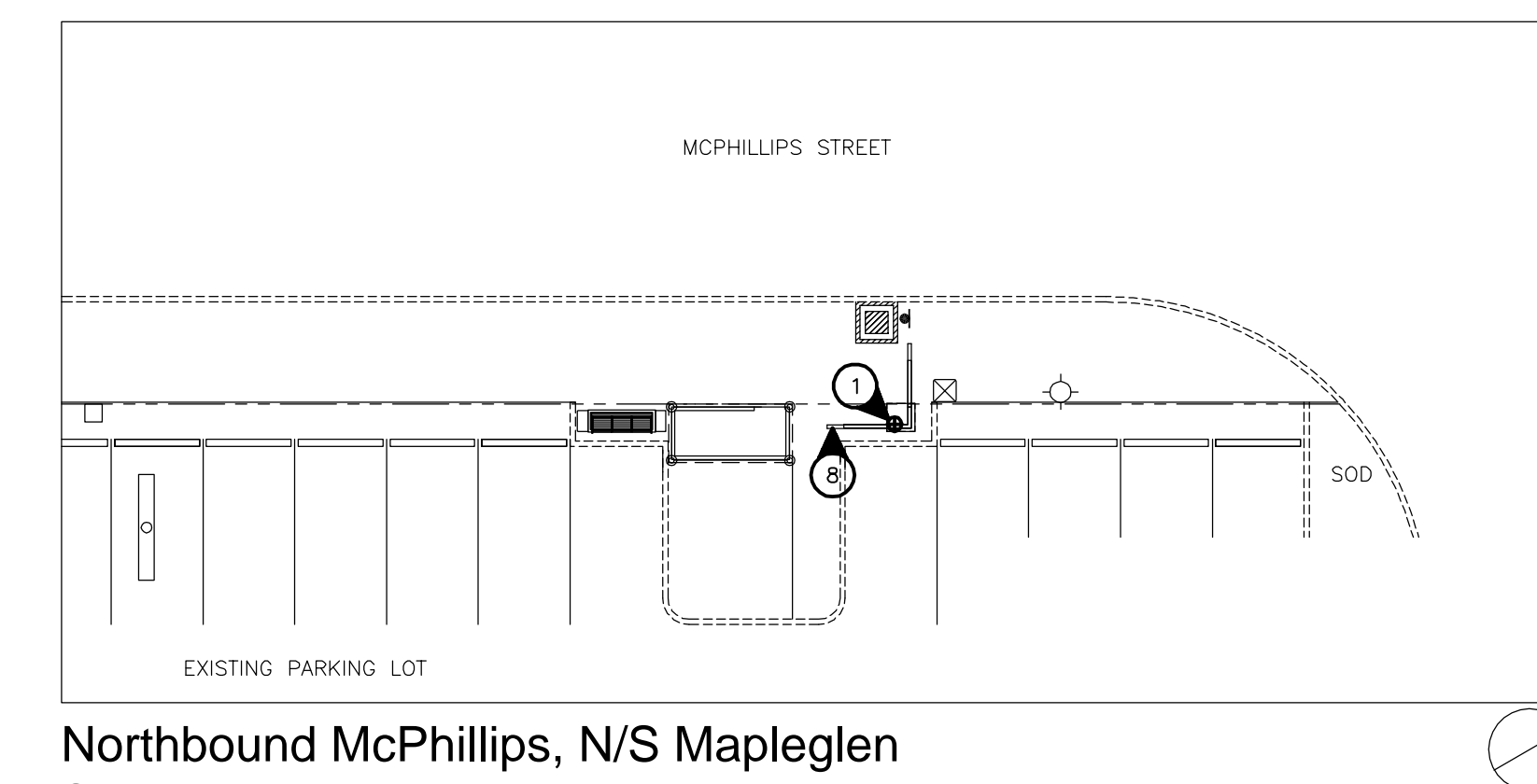
1. INSTALL JUNCTION BOX IN SHELTER TO PROVIDE POWER FOR LIGHTING AND HEATING CIRCUITS.
2. LABEL ELECTRICAL CIRCUIT AND DEVICES WITH LAMACOID PLATES.
3. LOCATE ALL EXISTING U/G SERVICES PRIOR TO TRENCHING.
4. MINIMUM WIRE SIZE #12.
5. CONFIRM ALL POWER CONNECTION POINTS WITH ASSOCIATED UTILITY/THE CITY.

No.	Revisions	Date	By
04-08-08	1:200		
Designed By	Drawn By	Checked By	
DZ/SL	SL	VJT	

Seals



Northbound McPhillips, N/S Selkirk
Stop 30500 Selkirk



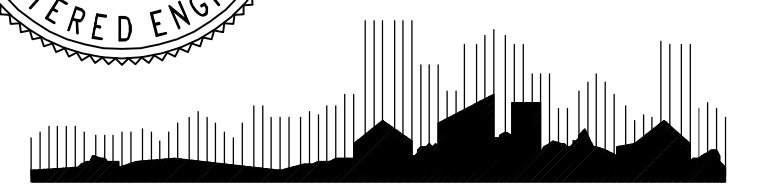
Northbound McPhillips, N/S Mapleglen
Stop 30436 Mapleglen



NOVA 3 ENGINEERING LTD.
CONSULTING ENGINEERS

201-120 FORT STREET TEL: (204) 943-6142
WINNIPEG, MANITOBA FAX: (204) 942-1276
R3C 1C7

THIS DRAWING IS THE EXCLUSIVE PROPERTY OF NOVA 3 ENGINEERING LTD. AND MAY ONLY BE REPRODUCED WITH THE WRITTEN PERMISSION OF NOVA 3 ENGINEERING LTD. THE CONCEPT AND DESIGN INCORPORATED INTO THIS DRAWING ARE BASED ON INFORMATION PROVIDED BY THE CLIENT AND OTHER RELATED SOURCES. PROFESSIONAL ENGINEER ACCEPTS NO RESPONSIBILITY FOR DRAWING AND DESIGN UNLESS DRAWING IS ACCOMPANIED BY ORIGINAL SEALED AND SIGNED LETTER OF INTENT AND CERTIFICATE OF INSPECTION. REFER TO WWW.NOVA3.CA FOR CAUTIONARY NOTES.



Client

WINNIPEG TRANSIT
Project Title

**BUS STOP UPGRADE
PROGRAM PHASE 3
ELECTRICAL WORKS**

Sheet Title
**NOTRE DAME & McPHILLIPS ST
STOPS LAYOUT PLANS**

Project No. 28-090 Drawing No. E-3