

PAVEMENT RECONSTRUCTION SECTION WITH BARRIER CURB AND SIDEWALK

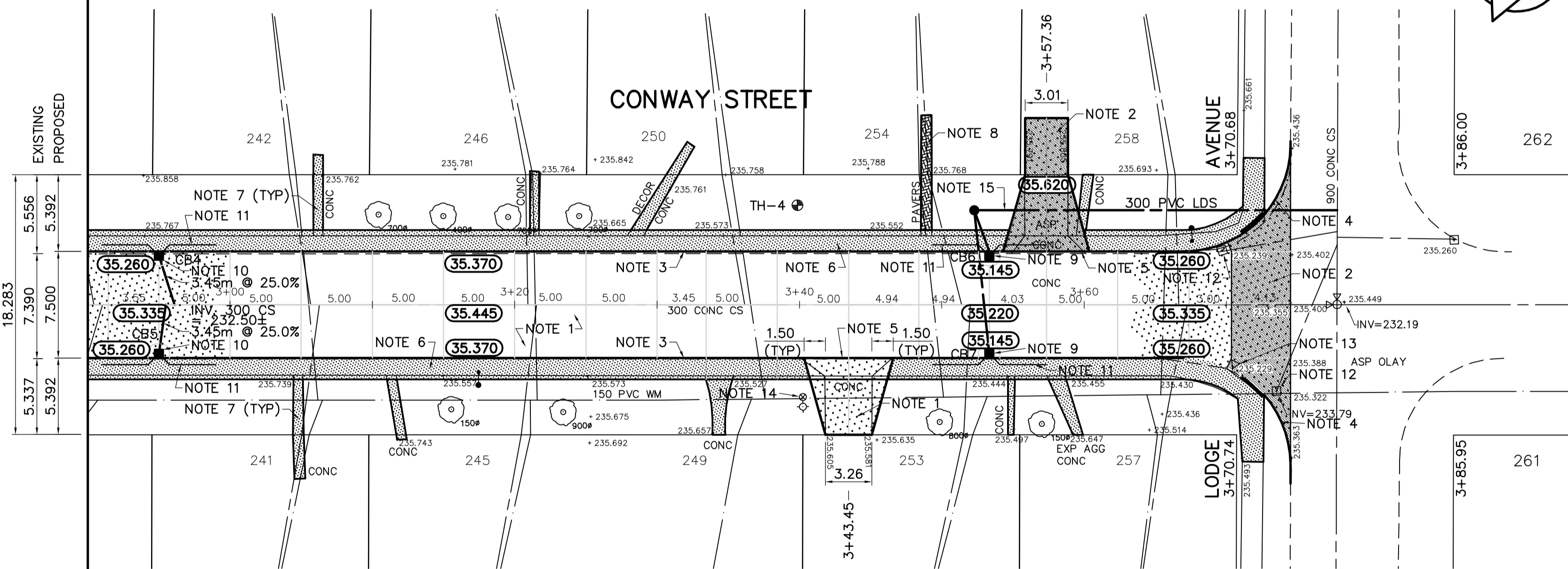
DESCRIPTION	RIM	INVERT			
		NORTH	SOUTH	EAST	WEST
CB 4	35.260			33.660	
CB 5	35.260				33.660
CB 6	35.145				33.545
CB 7	35.145				33.545

REFERENCE NOTES

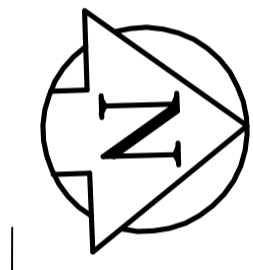
- PAVEMENT DIMENSIONS ARE TO BACK OF CURB
- ADD 200.000 TO DESIGN ELEVATIONS TO OBTAIN GEODETIC DATUM
- BASELINE IS CENTRE LINE RIGHT-OF-WAY
- PROPERTY LINES OBTAINED FROM CITY OF WINNIPEG L.B.I.S., AND NO SCALE FACTOR WAS APPLIED
- REFER TO DRAWING CU01 FOR LAND DRAINAGE WORKS
- REFER TO EARTH TECH FIELD BOOK NO. 4575

CONSTRUCTION NOTES

- REMOVE EXISTING PAVEMENT AND CONSTRUCT NEW 150mm REINFORCED CONCRETE PAVEMENT
- REMOVE EXISTING PAVEMENT AND CONSTRUCT NEW 150mm REINFORCED CONCRETE PAVEMENT c/w 50mm ASPHALT OVERLAY (TYPE 1A)
- CONSTRUCT NEW CONCRETE BARRIER CURB (180mm HT, SEPARATE)
- CONSTRUCT NEW MODIFIED CONCRETE BARRIER CURB (180mm HT, INTEGRAL)
- CONSTRUCT NEW MOUNTABLE CURB (50mm HT, INTEGRAL)
- CONSTRUCT NEW 100mm CONCRETE SIDEWALK
- RENEW EXISTING CONCRETE PRIVATE SIDEWALK
- REGRADE EXISTING PAVING STONES
- INSTALL NEW CURB AND GUTTER INLET c/w CATCH BASIN (SD-024) AND CONNECT NEW 250mm LEAD TO EXISTING MANHOLE
- INSTALL NEW CURB AND GUTTER INLET c/w CATCH BASIN (SD-024) AND CONNECT NEW 250mm LEAD TO EXISTING MANHOLE
- INSTALL 150mm SUBDRAIN
- REMOVE EXISTING CATCH BASIN
- ABANDON EXISTING DRAINAGE INLET
- ADJUST EXISTING WATER VALVE TO GRADE
- SEE DRAWING CU-01 FOR LAND DRAINAGE SEWER



EXISTING PROPOSED
5.556 5.392
7.390 7.500
5.337 5.392



METRIC
WHOLE NUMBERS INDICATE MILLIMETRES
DECIMALIZED NUMBERS INDICATE METRES

150 mm W.M.	WATERMAIN	150 mm W.M.	HYDRO	HYDRO	WEST GUTTER	EAST GUTTER	WEST PROPERTY LINE	EAST PROPERTY LINE
◇	HYDRANT	+	M.T.S.	×	—	—	—	—
○	VALVE	○	CONCRETE	—	—	—	—	—
○	LAND DRAINAGE SEWER	○	ASPHALT	—	—	—	—	—
○	WASTEWATER SEWER	○	PROPERTY LINE	—	—	—	—	—
○	MANHOLE	○	SURVEY BAR	—	—	—	—	—
○	CATCH BASIN	○	ELEVATION	(32.750)	—	—	—	—
▽	CURB INLET	▽	TREE	—	—	—	—	—
—	JUNCTIONS	—	SIDEWALK RAMP	—	—	—	—	—
—	CULVERT	—	CONCRETE SIDEWALK	—	—	—	—	—
—	GAS	—	FENCE	—	—	—	—	—
—	EXISTING	—	LEGEND - PLAN	—	—	—	—	—
—	LEGEND - PLAN	—	PROPOSED	—	—	—	—	—
—	EXISTING	—	LEGEND - PROFILE	—	—	—	—	—
—	LEGEND - PROFILE	—	PROPOSED	—	—	—	—	—

LOCATION APPROVED UNDERGROUND STRUCTURES

SUPV. U/G STRUCTURES DATE COMMITTEE

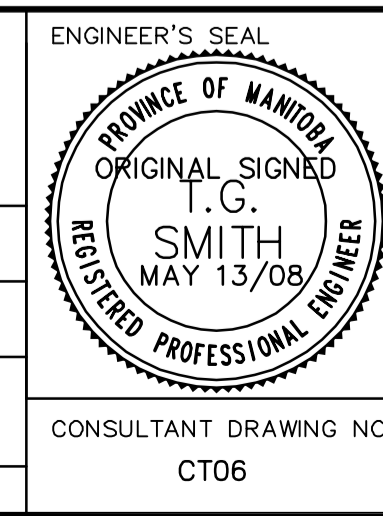
NOTE:
LOCATION OF UNDERGROUND STRUCTURES AS SHOWN ARE BASED ON THE BEST INFORMATION AVAILABLE, BUT NO GUARANTEE IS GIVEN THAT ALL EXISTING UTILITIES ARE SHOWN OR THAT THE GIVEN LOCATIONS ARE EXACT. CONFIRMATION OF EXISTENCE AND EXACT LOCATION OF ALL SERVICES MUST BE OBTAINED FROM THE INDIVIDUAL UTILITIES BEFORE PROCEEDING WITH CONSTRUCTION.

B.M. 39-007 1ft. in Conc. platform of pumphouse, S. of Portage Ave. @ Conway St., 0.4m S.W. of N.E. Cor. of platform.
ELEV. 236.708

NO.	REVISIONS	DATE	BY
0	ISSUED FOR TENDER	05/13/08	BC
A	ISSUED FOR REVIEW	04/14/08	BC

EarthTech
A tyco International Ltd. Company

DESIGNED BY	BC	CHECKED BY	TGS
DRAWN BY	BC	APPROVED BY	
HOR. SCALE:	1:250	RELEASED FOR CONSTRUCTION BY:	
VERTICAL:	1:10	DATE	03/07/2008



THE CITY OF WINNIPEG
PUBLIC WORKS DEPARTMENT
TRANSPORTATION ENGINEERING DIVISION

CONWAY STREET
PORTAGE AVENUE TO LODGE AVENUE

PAVEMENT RECONSTRUCTION
PLAN/PROFILE
STATION 2+90 TO LODGE AVENUE

CITY DRAWING NUMBER
SHEET 3 OF 3

CONSULTANT DRAWING NO. CT06