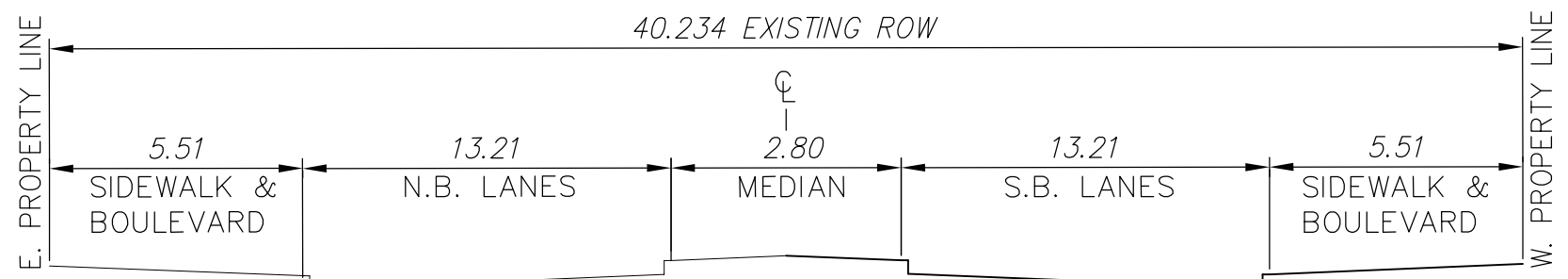
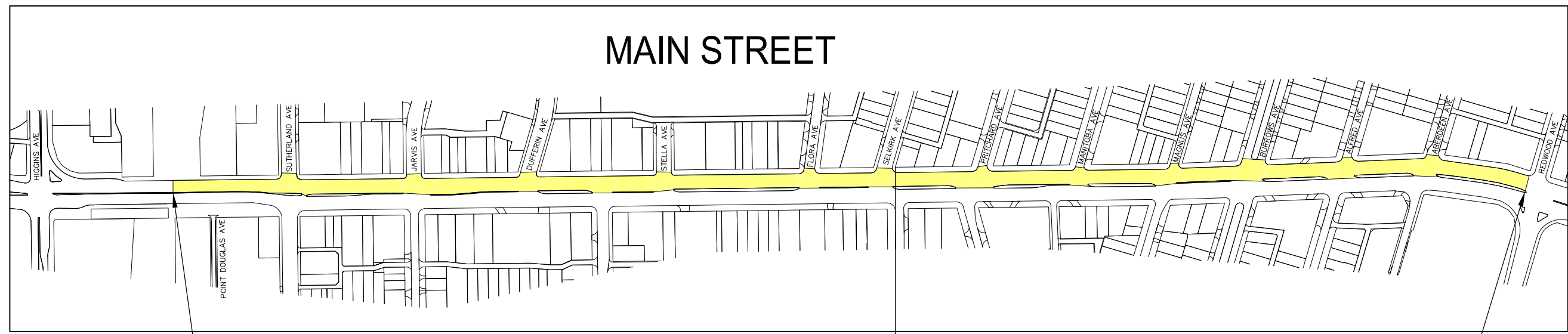
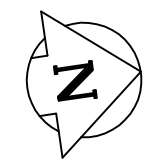


Jan 30, 2008 - 10:22am  
 P:\41900 - 41999\41931 2008 Regional Mill and Fill Program - Main Street\DWGS\MMM\BID OPPORTUNITY SKETCHES\41931-SK-01.dwg -tab:SK-01

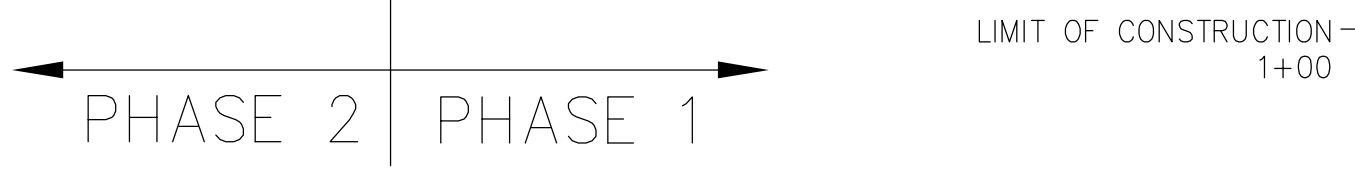


TYPICAL CROSS-SECTION

- SCOPE OF WORK:
- MISCELLANEOUS CURB RENEWALS
  - MISCELLANEOUS SLAB RENEWALS
  - MILL EXISTING ASPHALT
  - PLACE ASPHALT OVERLAY



LIMIT OF CONSTRUCTION  
14+10



SCALE NTS



MMM Group Limited  
 Suite 111 - 93 Lombard Ave.  
 Winnipeg, MB R3B 3B1  
 t.204.943.3178  
 f.209.943.4948  
 www.mmm.ca

CITY OF WINNIPEG  
 2008 REGIONAL STREETS MINOR ASPHALT REHABILITATION  
 MAIN STREET - SOUTHBOUND  
 REDWOOD AVE. TO HIGGINS AVE.

DRAWN BY:  
KT

DATE:  
JAN.07.08

AutoCadd NO#  
41931-SK-01