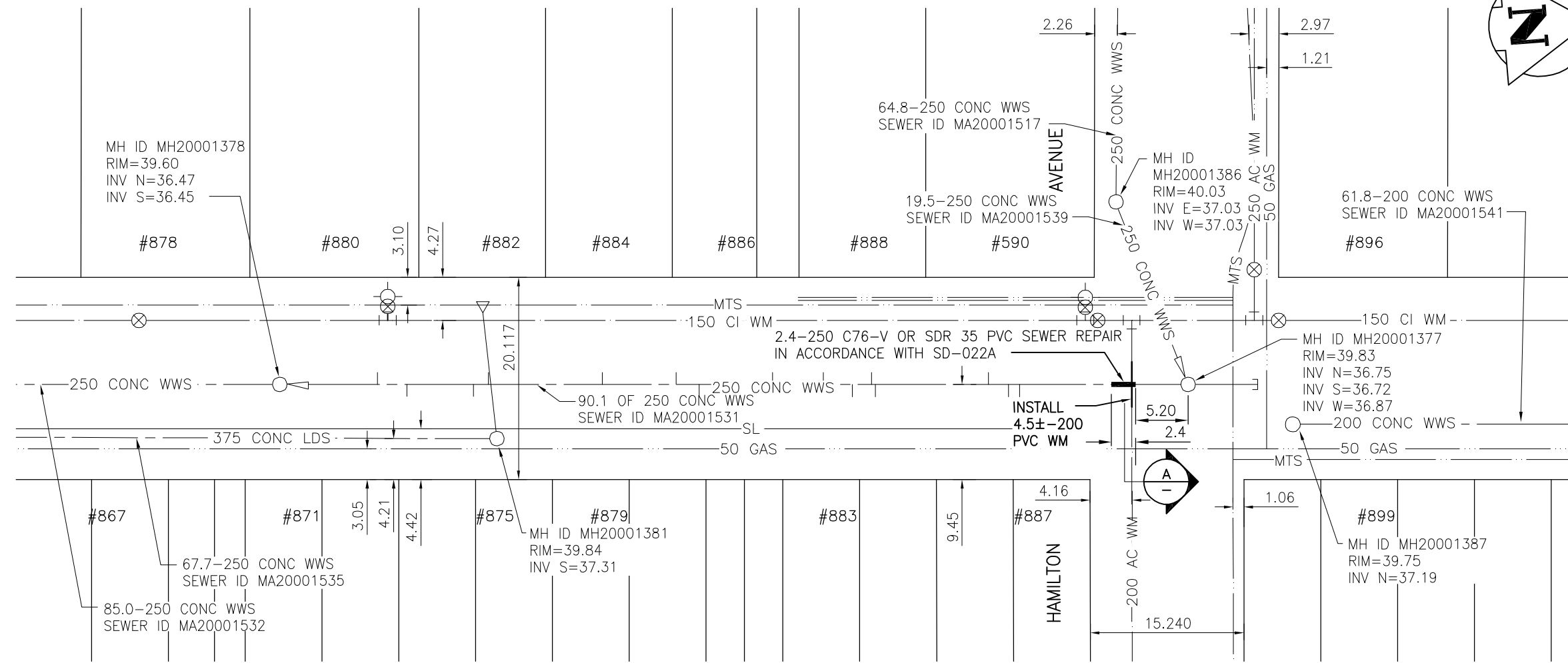
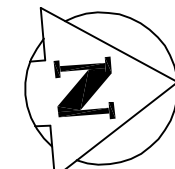


ISBISTER STREET

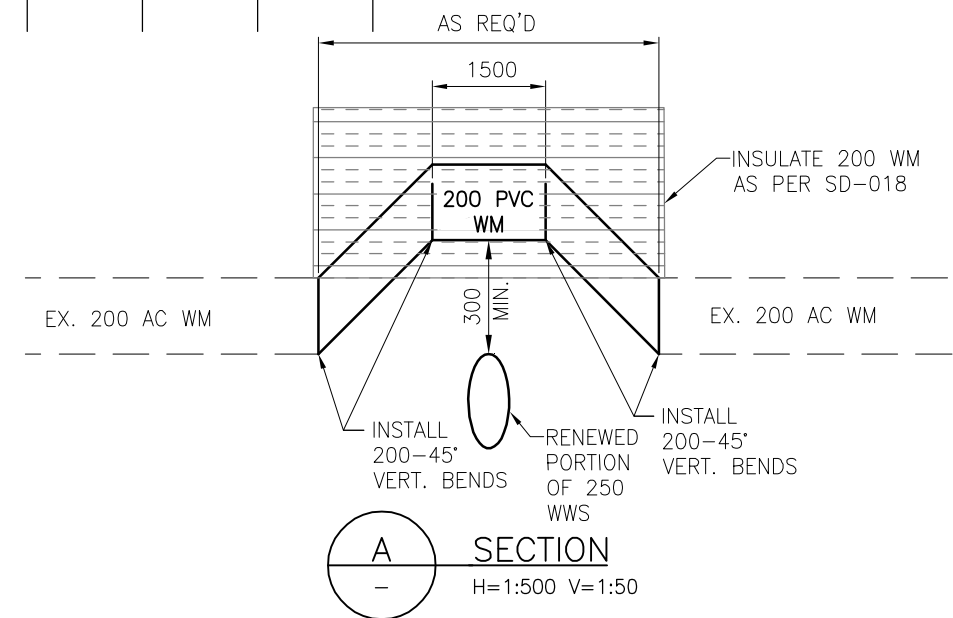


SEWER JUNCTION INFORMATION

REFERENCE-METERS SOUTH OF MANHOLE MH20001378

DIST. FROM REF. MANHOLE	JUNCTION DIA.	CLOCK REF.	SERVICE TYPE
9.7	150	09	CXI
12.6	150	02	CN
19.2	150	02	CN
20.7	150	11	CN
32.0	150	11	CN
39.3	150	11	CN
41.6	150	02	CN
48.9	150	10	CN
53.9	150	11	CN
56.8	150	02	JN
58.7	150	10	CNI
59.1	150	02	CX
70.3	150	10	CN
72.3	150	02	JN
73.4	150	02	CN

ALL JUNCTION INFORMATION BASED ON CCTV INSPECTION



METRIC
WHOLE NUMBERS INDICATE MILLIMETRES
DECIMALIZED NUMBERS INDICATE METRES

WARNING
IF POWER EQUIPMENT OR EXPLOSIVES ARE TO BE USED FOR EXCAVATION ON THIS PROJECT THE CONTRACTOR MUST:
1) NOTIFY THE GAS COMPANY OF THE PROPOSED LOCATION OF EXCAVATION.
2) TAKE PRECAUTION TO AVOID DAMAGE TO GAS COMPANY INSTALLATIONS.
SEE PROVINCIAL REGULATION 140/92 FOR DETAILS

BENCH MARK: 83R569 - S. side of Hamilton Ave., in median of Buchanan Blvd., t/b/t. on top of 0.05m dia. x 2.4m iron pipe on S.L. of Hamilton Ave. & 14.3m E. of W.L. of Buchanan Blvd.

BID OPPORTUNITY 391-2008

LOCATION APPROVED UNDERGROUND STRUCTURES

SUPV. U/G STRUCTURES COMMITTEE	DATE

NOTE:
LOCATION OF UNDERGROUND STRUCTURES AS SHOWN ARE BASED ON THE BEST INFORMATION AVAILABLE BUT NO GUARANTEE IS GIVEN THAT ALL EXISTING UTILITIES ARE SHOWN OR THAT THE GIVEN LOCATIONS ARE EXACT. CONFIRMATION OF EXISTENCE AND EXACT LOCATION OF ALL SERVICES MUST BE OBTAINED FROM THE INDIVIDUAL UTILITIES BEFORE PROCEEDING WITH CONSTRUCTION.

B.M. 40-033
ELEV. 239.560m

NO.	REVISIONS	DATE	BY

Stantec Consulting Ltd.
905 Waverley Street, Winnipeg, Manitoba
Tel 204-489-5900 Fax 204-453-9012

DESIGNED BY J.K.H.	CHECKED BY W.A.B.
DRAWN BY W.B.G.	APPROVED BY H.A.K.
HOR. SCALE: VERTICAL: 1:500 N/A	RELEASED FOR CONSTRUCTION: DATE

ENGINEER'S SEAL
PROVINCE OF MANITOBA
REGISTERED PROFESSIONAL ENGINEER
H. A. KATZ
CONSULTANT DRAWING NO.
C-215

THE CITY OF WINNIPEG
WATER AND WASTE DEPARTMENT

2008 WATERMAIN RENEWALS, SEWER RENEWALS, AND EXTERNAL POINT REPAIRS - CONTRACT 7
ISBISTER STREET
1ST MH S. OF HAMILTON AVE. TO MH @ HAMILTON AVE.
250 WWS POINT REPAIR

SHEET 15 OF 26
CAD FILE DRAWING NUMBER 10340c-215-702.dwg
CITY DRAWING NUMBER 08517

V:\112\active\111210340\drawing\402_design\sheet_files\10340c-215-702.dwg 2008-05-08 10:30AM By: wjutttek