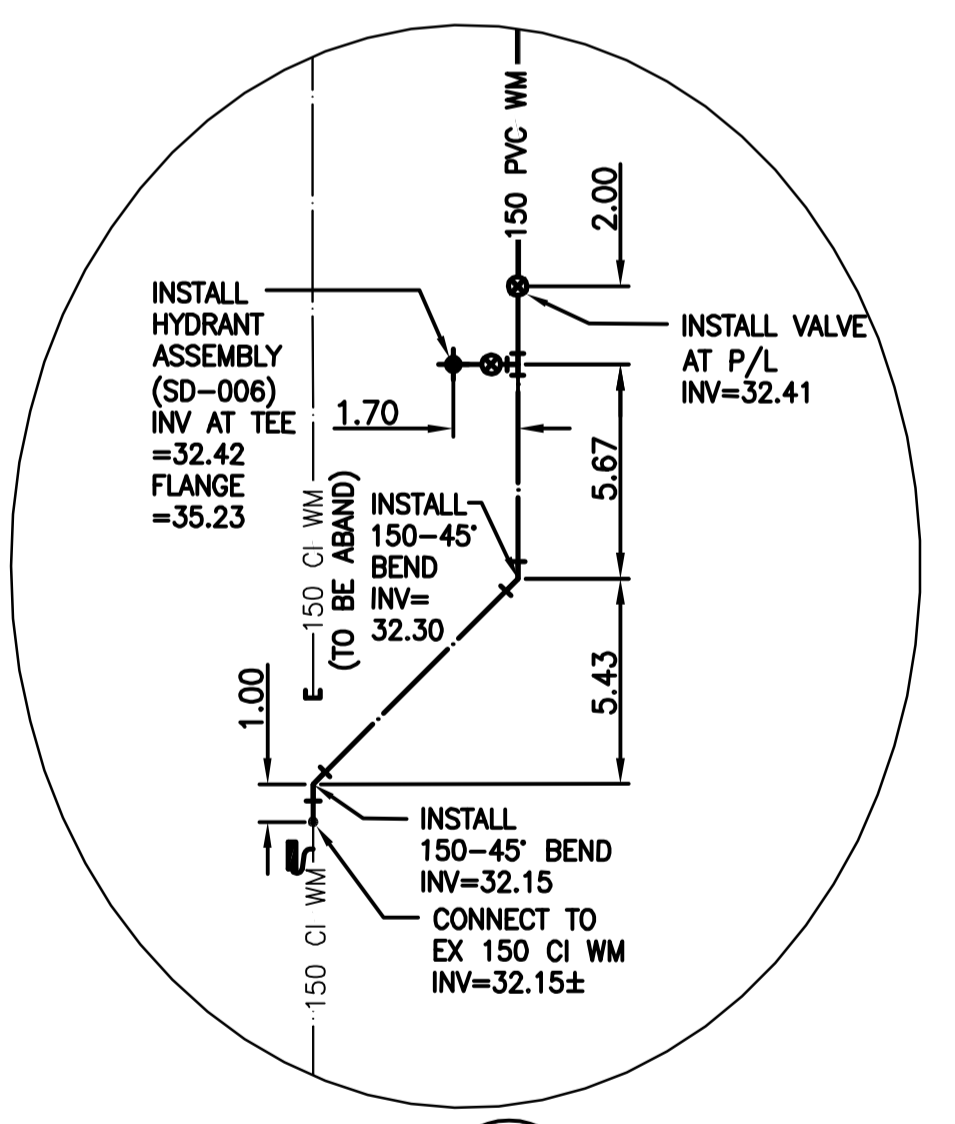


1
DETAIL
1:100



2
DETAIL
1:200

WARNING

IF POWER EQUIPMENT OR EXPLOSIVES ARE TO BE USED FOR EXCAVATION ON THIS PROJECT THE CONTRACTOR MUST:
 1) NOTIFY THE GAS COMPANY OF THE PROPOSED LOCATION OF EXCAVATION.
 2) TAKE PRECAUTION TO AVOID DAMAGE TO GAS COMPANY INSTALLATIONS.
 SEE PROVINCIAL REGULATION 140/92 FOR DETAILS

METRIC
 WHOLE NUMBERS INDICATE MILLIMETRES
 DECIMALIZED NUMBERS INDICATE METRES

NOTE:
 NESS AVE STREET REHABILITATION PROJECT (NOT IN CONTRACT) TO BE DONE UNDER BID OPP. 396-2008.
 STREET REHABILITATION TO BE COMPLETE AFTER WATERMAIN RENEWAL PROJECT

BENCH MARK: 83+621 - N.E. cor. Ness Ave. & Woodlawn St., Tbit. on top of 0.05m dia. x 2.4m iron pipe, on N.L. of Ness Ave. & 1.2m W. of E.L. of Woodlawn St.

NOTE:
 STATIONS ALONG N R OF NESS AVE. BID OPPORTUNITY 391-2008

WATER SERVICE INFORMATION

ADDRESS	SIZE (mm) & TYPE (STREET)	DIST TO PROP	SHORT & LONG MEASUREMENT	CORP LOCATION	REMARKS
416 SHARP ST. RESIDENTIAL	19 COPPER	21.34	1.0 SSL BUILDING	-	NO INFO
419 SHARP ST. RESIDENTIAL	19 COPPER	3.05	1.3 WEL BUILDING	-	-
420 AIR FORCE WAY RESIDENTIAL	-	-	-	-	-
2075 NESS AVE	-	-	-	-	NOT IN USE

- NOTES:**
- CONTRACTOR TO EXPOSE EXISTING WATERMANS WHERE THE INS ARE LOCATED AND CONFIRM THE INVERTS OF THOSE THE INS.
 - CONTRACTOR TO FOLLOW THE LATEST VERSION OF THE CITY OF WINNIPEG STANDARD CONSTRUCTION SPECIFICATION.
 - WATERMANS TO BE INSTALLED BY TRENCHLESS METHODS.
 - CLASS 3 BACKFILL IS TO BE USED WHEN EXCAVATIONS ARE WITHIN 1 METER OF PAVED SURFACES.
 - CONTRACTOR TO NOTIFY BUSINESSES AND RESIDENTS A MINIMUM OF 24 HOURS PRIOR TO ANY DISRUPTIONS TO WATER SERVICE.

W:\112\p\11210340\winipeg\11210340\design\sharpe\11210340-201-702.dwg
 2008-05-08 09:53:00 By: wprinak

150 WM		150 WM		HYDRO		150 WM		150 WM		150 WM	
○	WATERMAIN	○	WATERMAIN	○	HYDRO	○	WATERMAIN	○	WATERMAIN	○	WATERMAIN
○	HYDRANT	○	HYDRANT	○	M.T.S.	○	HYDRANT, VALVE	○	LAND DRAINAGE SEWER	○	LAND DRAINAGE SEWER
○	VALVE	○	VALVE	○	CONCRETE	○	WASTE WATER SEWER	○	WASTE WATER SEWER	○	WASTE WATER SEWER
○	300 LDS	○	300 LDS	○	ASPHALT	○	250 WWS	○	250 WWS	○	250 WWS
○	250 WWS	○	250 WWS	○	SIDEWALK	○	PROPERTY LINE	○	NORTH OR WEST GUTTER	○	NORTH OR WEST GUTTER
○	MANHOLE	○	MANHOLE	○	SURVEY BAR	○	SOUTH OR EAST GUTTER	○	SOUTH OR EAST GUTTER	○	SOUTH OR EAST GUTTER
○	CATCH BASIN	○	CATCH BASIN	○	DITCH	○	NORTH OR WEST R	○	NORTH OR WEST R	○	NORTH OR WEST R
○	CURB INLET	○	CURB INLET	○	DITCH STOP	○	SOUTH OR EAST R	○	SOUTH OR EAST R	○	SOUTH OR EAST R
○	JUNCTIONS	○	JUNCTIONS	○	FENCE	○	NORTH OR WEST DITCH	○	NORTH OR WEST DITCH	○	NORTH OR WEST DITCH
○	STREET REHABILITATION LIMIT	○	STREET REHABILITATION LIMIT	○	TREE	○	SOUTH OR EAST DITCH	○	SOUTH OR EAST DITCH	○	SOUTH OR EAST DITCH
○	GAS	○	GAS	○	LEGEND-PLAN	○	LEGEND-PROFILE	○	LEGEND-PLAN	○	LEGEND-PROFILE
○	EXISTING	○	PROPOSED	○	EXISTING	○	PROPOSED	○	EXISTING	○	PROPOSED

LOCATION APPROVED UNDERGROUND STRUCTURES

SUPV. U/G STRUCTURES COMMITTEE DATE

NOTE:
 LOCATION OF UNDERGROUND STRUCTURES AS SHOWN ARE BASED ON THE BEST INFORMATION AVAILABLE BUT NO GUARANTEE IS GIVEN THAT ALL EXISTING UTILITIES ARE SHOWN OR THAT THE GIVEN LOCATIONS ARE EXACT. CONFIRMATION OF EXISTENCE AND EXACT LOCATION OF ALL SERVICES MUST BE OBTAINED FROM THE INDIVIDUAL UTILITIES BEFORE PROCEEDING WITH CONSTRUCTION.

NO.	REVISIONS	DATE	BY

Stantec Consulting Ltd.
 905 Waverley Street, Winnipeg, Manitoba
 Tel 204-489-5900 Fax 204-453-9012

DESIGNED BY: J.K.H.
 CHECKED BY: H.A.K.
 DRAWN BY: T.G.
 APPROVED BY: H.A.K.

HOR. SCALE: 1:250
 VERTICAL: 1:50

RELEASED FOR CONSTRUCTION: DATE

ENGINEER'S SEAL
 PROVINCE OF MANITOBA
 REGISTERED PROFESSIONAL ENGINEER
 H.A. KATZ
 CONSULTANT DRAWING NO. C-202

THE CITY OF WINNIPEG
 WATER AND WASTE DEPARTMENT
 ENGINEERING DIVISION

2008 WATERMAIN RENEWALS, SEWER RENEWALS AND EXTERNAL POINT REPAIRS - CONTRACT 7
 NESS AVENUE
 MOORGATE STREET TO BELVIDERE STREET
 STA. 1+75 TO STA. 3+00
 WATERMAIN RENEWAL

SHEET 2 OF 26
 CAD FILE DRAWING NUMBER 10340c-201-702.dwg
 CITY DRAWING NUMBER D-11348