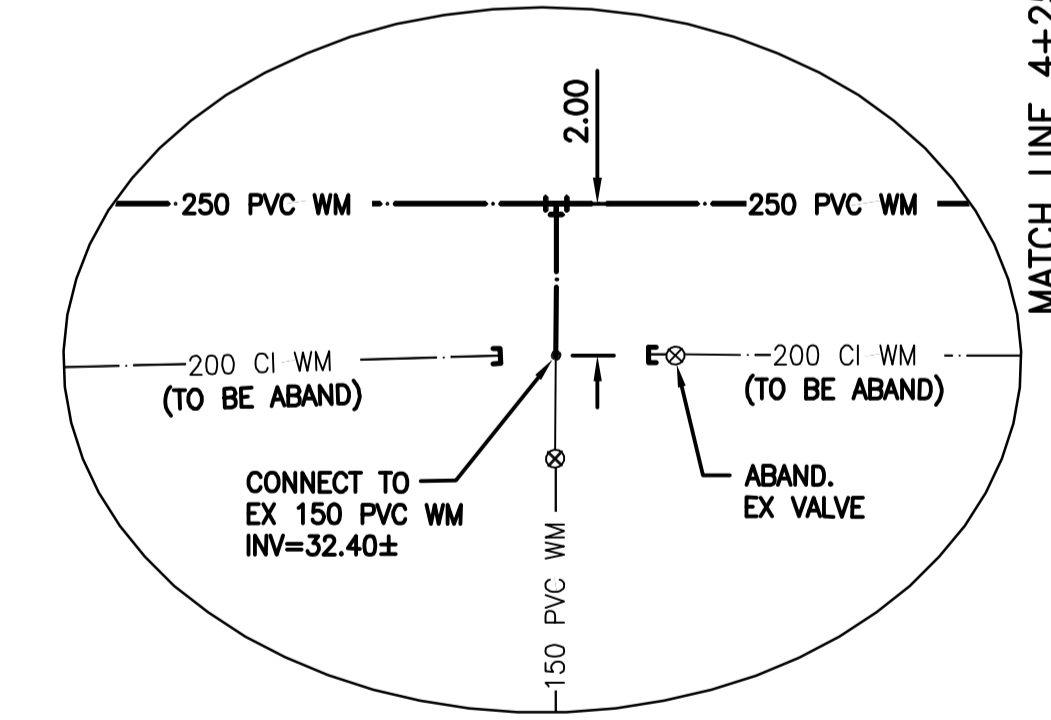
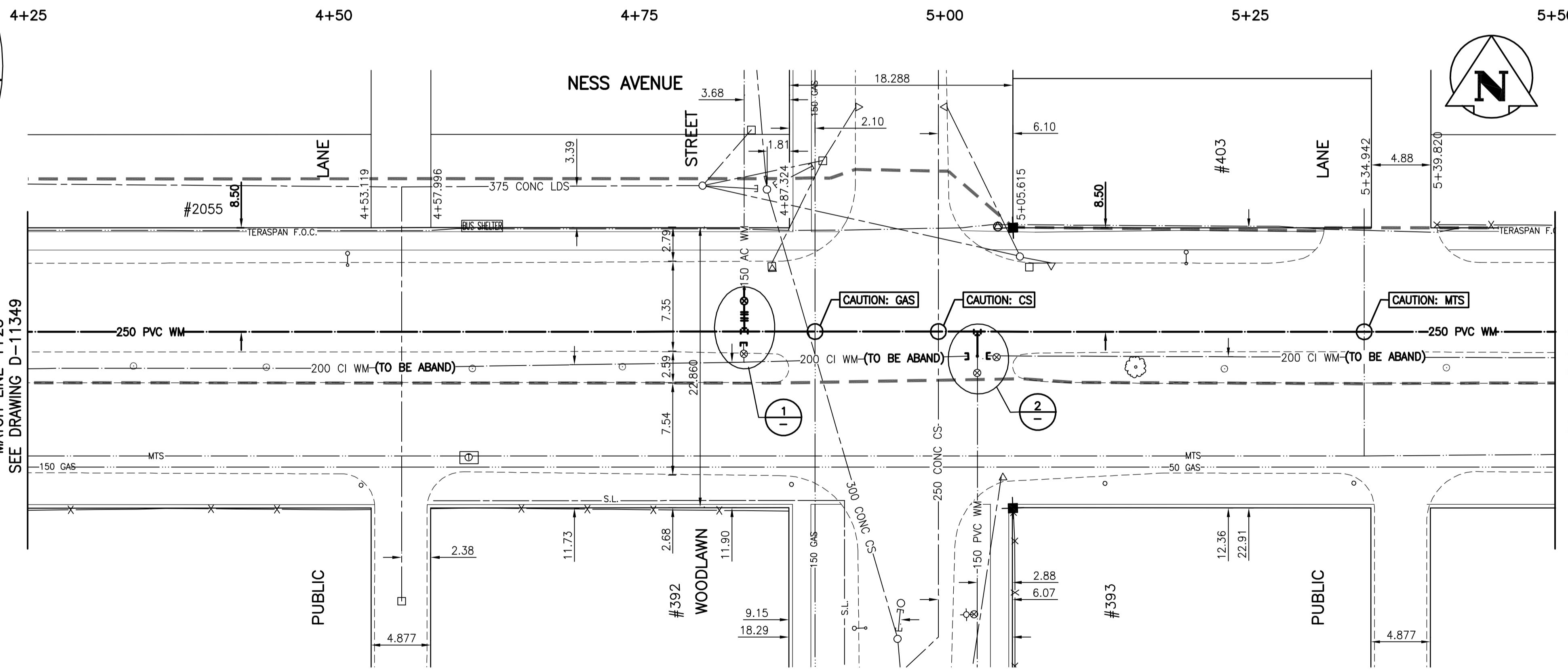


1 DETAIL
1:100



2 DETAIL
1:100



MATCH LINE 5+50
SEE DRAWING D-11351

- NOTES:
- CONTRACTOR TO EXPOSE EXISTING WATERMANS WHERE TIE INS ARE LOCATED AND CONFIRM THE INVERTS OF THOSE TIE INS.
 - CONTRACTOR TO FOLLOW THE LATEST VERSION OF THE CITY OF WINNIPEG STANDARD CONSTRUCTION SPECIFICATION.
 - WATERMANS TO BE INSTALLED BY TRENCHLESS METHODS.
 - CLASS 3 BACKFILL IS TO BE USED WHEN EXCAVATIONS ARE WITHIN 1 METER OF PAVED SURFACES.
 - CONTRACTOR TO NOTIFY BUSINESSES AND RESIDENTS A MINIMUM OF 24 HOURS PRIOR TO ANY DISRUPTIONS TO WATER SERVICE.

WARNING

IF POWER EQUIPMENT OR EXPLOSIVES ARE TO BE USED FOR EXCAVATION ON THIS PROJECT THE CONTRACTOR MUST:
 1) NOTIFY THE GAS COMPANY OF THE PROPOSED LOCATION OF EXCAVATION.
 2) TAKE PRECAUTION TO AVOID DAMAGE TO GAS COMPANY INSTALLATIONS.
 SEE PROVINCIAL REGULATION 140/92 FOR DETAILS

METRIC

WHOLE NUMBERS INDICATE MILLIMETRES
 DECIMALIZED NUMBERS INDICATE METRES

NOTE:
 NESS AVE STREET REHABILITATION PROJECT (NOT IN CONTRACT) TO BE DONE UNDER BID OPP. 396-2008.
 STREET REHABILITATION TO BE COMPLETED AFTER WATERMAIN RENEWAL PROJECT

NOTE:
 STATIONS ALONG N P OF NESS AVE.

APEGM
 Certificate of Authorization
 Stantec Consulting Ltd.
 No. 1301 Expiry: April 30, 2009

ADDRESS	SIZE (mm) & TYPE (STREET)	DIST TO PROP	SHORT & LONG MEASUREMENT	CORP LOCATION	REMARKS
2055 NESS AVE	150 SUMMER SERVICE AC	0.3	9.1 N OF 1ST HYD N OF NESS ON WOODLAWN	NO INFO	PT PLANS 6490,1693,1617
392 WOODLAWN ST.	19 RESIDENTIAL COPPER	15.8	2.0 NSL BUILDING	HYD S NESS	-
393 WOODLAWN ST.	19 RESIDENTIAL COPPER	2.4	0.2 SSL BUILDING	HYD S NESS	-
403 WOODLAWN ST.	19 RESIDENTIAL COPPER	0.3	5.0 SSL BUILDING 9.5 NNL NESS	NO INFO	NOV 00 RENEWED SERVICE BOX

BENCH MARK: 83+621 - N.E. cor. Ness Ave. & Woodlawn St., Tbt. on top of 0.05m dia. x 2.4m iron pipe, on N.L. of Ness Ave. & 1.2m W. of E.L. of Woodlawn St.

BID OPPORTUNITY 391-2008

EXISTING	LEGEND-PLAN	PROPOSED	EXISTING	LEGEND-PLAN	PROPOSED	EXISTING	LEGEND-PROFILE	PROPOSED
150 WM	WATERMAIN	150 WM	HYDRO	HYDRO	150 WM	WATERMAIN	150 WM	WATERMAIN
300 LDS	LAND DRAINAGE SEWER	300 LDS	M.T.S.	HYDRANT VALVE	300 LDS	LAND DRAINAGE SEWER	300 LDS	LAND DRAINAGE SEWER
250 WWS	WASTE WATER SEWER	250 WWS	CONCRETE	CONCRETE	250 WWS	WASTE WATER SEWER	250 WWS	WASTE WATER SEWER
MANHOLE	MANHOLE	PROPERTY LINE	ASPHALT	PROPERTY LINE	PROPERTY LINE	PROPERTY LINE	PROPERTY LINE	PROPERTY LINE
CATCH BASIN	CATCH BASIN	SURVEY BAR	SIDEWALK	SURVEY BAR	SURVEY BAR	SURVEY BAR	SURVEY BAR	SURVEY BAR
CURB INLET	CURB INLET	DITCH	PROPERTY LINE	DITCH	DITCH	DITCH	DITCH	DITCH
JUNCTIONS	JUNCTIONS	CURB STOP	PROPERTY LINE	CURB STOP	CURB STOP	CURB STOP	CURB STOP	CURB STOP
STREET REHABILITATION LIMIT	STREET REHABILITATION LIMIT	TREE	PROPERTY LINE	TREE	TREE	TREE	TREE	TREE
GAS	GAS	FENCE	PROPERTY LINE	FENCE	FENCE	FENCE	FENCE	FENCE

LOCATION APPROVED UNDERGROUND STRUCTURES

SUPV. U/G STRUCTURES COMMITTEE

NOTE:
 LOCATION OF UNDERGROUND STRUCTURES AS SHOWN ARE BASED ON THE BEST INFORMATION AVAILABLE BUT NO GUARANTEE IS GIVEN THAT ALL EXISTING UTILITIES ARE SHOWN OR THAT THE GIVEN LOCATIONS ARE EXACT. CONFIRMATION OF EXISTENCE AND EXACT LOCATION OF ALL SERVICES MUST BE OBTAINED FROM THE INDIVIDUAL UTILITIES BEFORE PROCEEDING WITH CONSTRUCTION.

NO.	REVISIONS	DATE	BY

Stantec Consulting Ltd.
 905 Waverley Street, Winnipeg, Manitoba
 Tel 204-489-5900 Fax 204-453-9012

DESIGNED BY: J.K.H.
 CHECKED BY: H.A.K.
 DRAWN BY: T.G.
 APPROVED BY: H.A.K.

HOR. SCALE: 1:250
 VERTICAL: 1:50

RELEASED FOR CONSTRUCTION: DATE

ENGINEER'S SEAL
 PROVINCE OF MANITOBA
 H.A. KATZ
 REGISTERED PROFESSIONAL ENGINEER
 CONSULTANT DRAWING NO. C-204

THE CITY OF WINNIPEG
 WATER AND WASTE DEPARTMENT
 ENGINEERING DIVISION

2008 WATERMAIN RENEWALS, SEWER RENEWALS AND EXTERNAL POINT REPAIRS - CONTRACT 7
 NESS AVENUE
 MOORGATE STREET TO BELVIDERE STREET
 STA. 4+25 TO STA. 5+50
 WATERMAIN RENEWAL

SHEET 4 OF 26
 CAD FILE DRAWING NUMBER 10340c-201-702.dwg
 CITY DRAWING NUMBER D-11350