

WATER SERVICE INFORMATION

ADDRESS	SIZE (mm) & TYPE (STREET)	DIST TO PROP	SHORT & LONG MEASUREMENT	CORP LOCATION	REMARKS
394 BELVIDERE ST.	-	12.8	0.5 NSL BUILDING	-	-
RESIDENTIAL	-	-	-	-	-
395 BELVIDERE ST.	19	2.4	3.9 WML BUILDING	-	-
RESIDENTIAL	-	-	12.9 EEL BELVIDERE	-	-
396 BELVIDERE ST.	-	12.8	1.8 SSL HOUSE	25.9 S 1ST HYD N NESS	-
RESIDENTIAL	-	-	45.7 FROM HYD	-	-
2050 NESS AVE.	19	12.2	15.8 SNL BUILDING	OPP STOP	STOP IS 1.8 SSL BLDG OR 10.1 S OF FENCE
SUMMER SERVICE	COPPER	-	26.8 S HYD	-	0.05 S ERV GOES TO BELVIDERE BK 14 PG 7

- NOTES:**
- CONTRACTOR TO EXPOSE EXISTING WATERMANS WHERE THE INS ARE LOCATED AND CONFIRM THE INVERTS OF THOSE TIE INS.
 - CONTRACTOR TO FOLLOW THE LATEST VERSION OF THE CITY OF WINNIPEG STANDARD CONSTRUCTION SPECIFICATION.
 - WATERMANS TO BE INSTALLED BY TRENCHLESS METHODS.
 - CLASS 3 BACKFILL IS TO BE USED WHEN EXCAVATIONS ARE WITHIN 1 METER OF PAVED SURFACES.
 - CONTRACTOR TO NOTIFY BUSINESSES AND RESIDENTS A MINIMUM OF 24 HOURS PRIOR TO ANY DISRUPTIONS TO WATER SERVICE.

WARNING

IF POWER EQUIPMENT OR EXPLOSIVES ARE TO BE USED FOR EXCAVATION ON THIS PROJECT THE CONTRACTOR MUST:

- NOTIFY THE GAS COMPANY OF THE PROPOSED LOCATION OF EXCAVATION.
- TAKE PRECAUTION TO AVOID DAMAGE TO GAS COMPANY INSTALLATIONS.
- SEE PROVINCIAL REGULATION 140/92 FOR DETAILS

METRIC

WHOLE NUMBERS INDICATE MILLIMETRES
DECIMALIZED NUMBERS INDICATE METRES

NOTE:
NESS AVE STREET REHABILITATION PROJECT (NOT IN CONTRACT) TO BE DONE UNDER BID OPP. 396-2008. STREET REHABILITATION TO BE COMPLETED AFTER WATERMAIN RENEWAL PROJECT

BENCH MARK: 83r621 - N.E. cor. Ness Ave. & Woodlawn St., Tbt. on top of 0.05m dia. x 2.4m iron pipe, on N.L. of Ness Ave. & 1.2m W. of E.L. of Woodlawn St.

NOTE:
STATIONS ALONG N E OF NESS AVE.

BID OPPORTUNITY 391-2008



EXISTING	LEGEND-PLAN	PROPOSED	EXISTING	LEGEND-PLAN	PROPOSED	EXISTING	LEGEND-PROFILE	PROPOSED
150 WM	WATERMAIN	150 WM	HYDRO	HYDRO	150 WM	WATERMAIN	150 WM	WATERMAIN
300 LDS	LAND DRAINAGE SEWER	300 LDS	CONCRETE	CONCRETE	300 LDS	LAND DRAINAGE SEWER	300 LDS	LAND DRAINAGE SEWER
250 WWS	WASTE WATER SEWER	250 WWS	ASPHALT	ASPHALT	250 WWS	WASTE WATER SEWER	250 WWS	WASTE WATER SEWER
MANHOLE	MANHOLE	MANHOLE	PROPERTY LINE	PROPERTY LINE	MANHOLE	MANHOLE	MANHOLE	MANHOLE
CATCH BASIN	CATCH BASIN	CATCH BASIN	SURVEY BAR	SURVEY BAR	CATCH BASIN	CATCH BASIN	CATCH BASIN	CATCH BASIN
CURB INLET	CURB INLET	CURB INLET	DITCH	DITCH	CURB INLET	CURB INLET	CURB INLET	CURB INLET
JUNCTIONS	JUNCTIONS	JUNCTIONS	CURB STOP	CURB STOP	JUNCTIONS	JUNCTIONS	JUNCTIONS	JUNCTIONS
STREET REHABILITATION LIMIT	STREET REHABILITATION LIMIT	STREET REHABILITATION LIMIT	TREE	TREE	STREET REHABILITATION LIMIT	STREET REHABILITATION LIMIT	STREET REHABILITATION LIMIT	STREET REHABILITATION LIMIT
GAS	GAS	GAS	FENCE	FENCE	GAS	GAS	GAS	GAS

LOCATION APPROVED UNDERGROUND STRUCTURES

SUPV. U/G STRUCTURES COMMITTEE	DATE

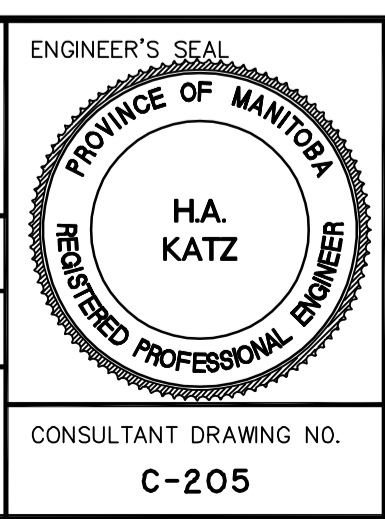
NOTE:
LOCATION OF UNDERGROUND STRUCTURES AS SHOWN ARE BASED ON THE BEST INFORMATION AVAILABLE BUT NO GUARANTEE IS GIVEN THAT ALL EXISTING UTILITIES ARE SHOWN OR THAT THE GIVEN LOCATIONS ARE EXACT. CONFIRMATION OF EXISTENCE AND EXACT LOCATION OF ALL SERVICES MUST BE OBTAINED FROM THE INDIVIDUAL UTILITIES BEFORE PROCEEDING WITH CONSTRUCTION.

NO. REVISIONS

NO.	REVISIONS	DATE	BY

Stantec Consulting Ltd.
905 Waverley Street, Winnipeg, Manitoba
Tel 204-489-5900 Fax 204-453-9012

DESIGNED BY	J.K.H.	CHECKED BY	H.A.K.
DRAWN BY	T.G.	APPROVED BY	H.A.K.
HOR. SCALE:	1:250	RELEASED FOR CONSTRUCTION:	
VERTICAL:	1:50	DATE	08.02.06



THE CITY OF WINNIPEG
WATER AND WASTE DEPARTMENT
ENGINEERING DIVISION

2008 WATERMAIN RENEWALS, SEWER RENEWALS AND EXTERNAL POINT REPAIRS - CONTRACT 7
NESS AVENUE
MOORGATE STREET TO BELVIDERE STREET
STA. 5+50 TO BELVIDERE STREET
WATERMAIN RENEWAL

SHEET 5 OF 26
CAD FILE DRAWING NUMBER 10340c-201-702.dwg
CITY DRAWING NUMBER D-11351