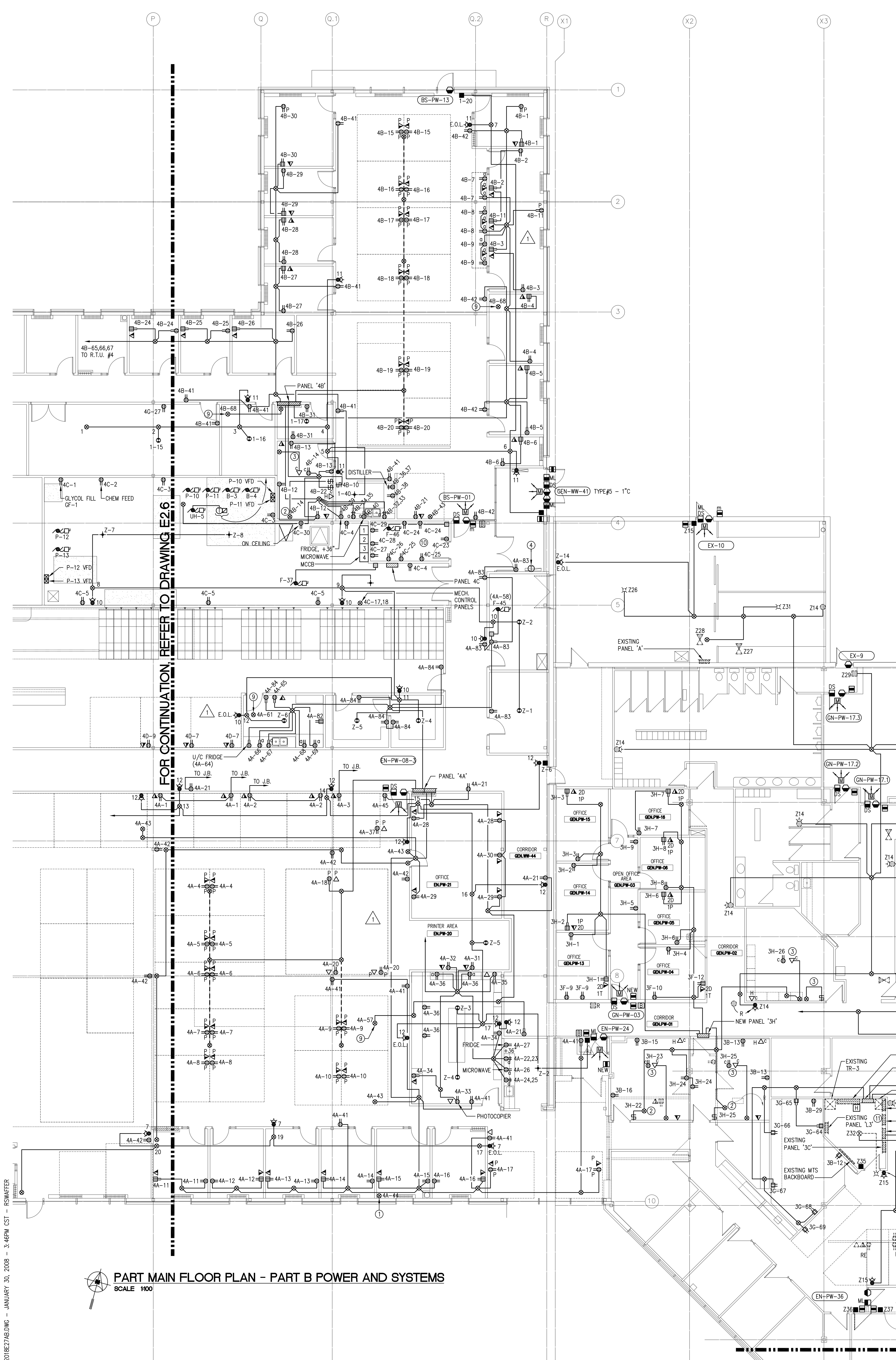


Friesen Tokar Architects
200 - 2013 Portage Avenue
Winnipeg, Canada R3J 0K3
Tel: 204.585.9323
Fax: 204.837.7235

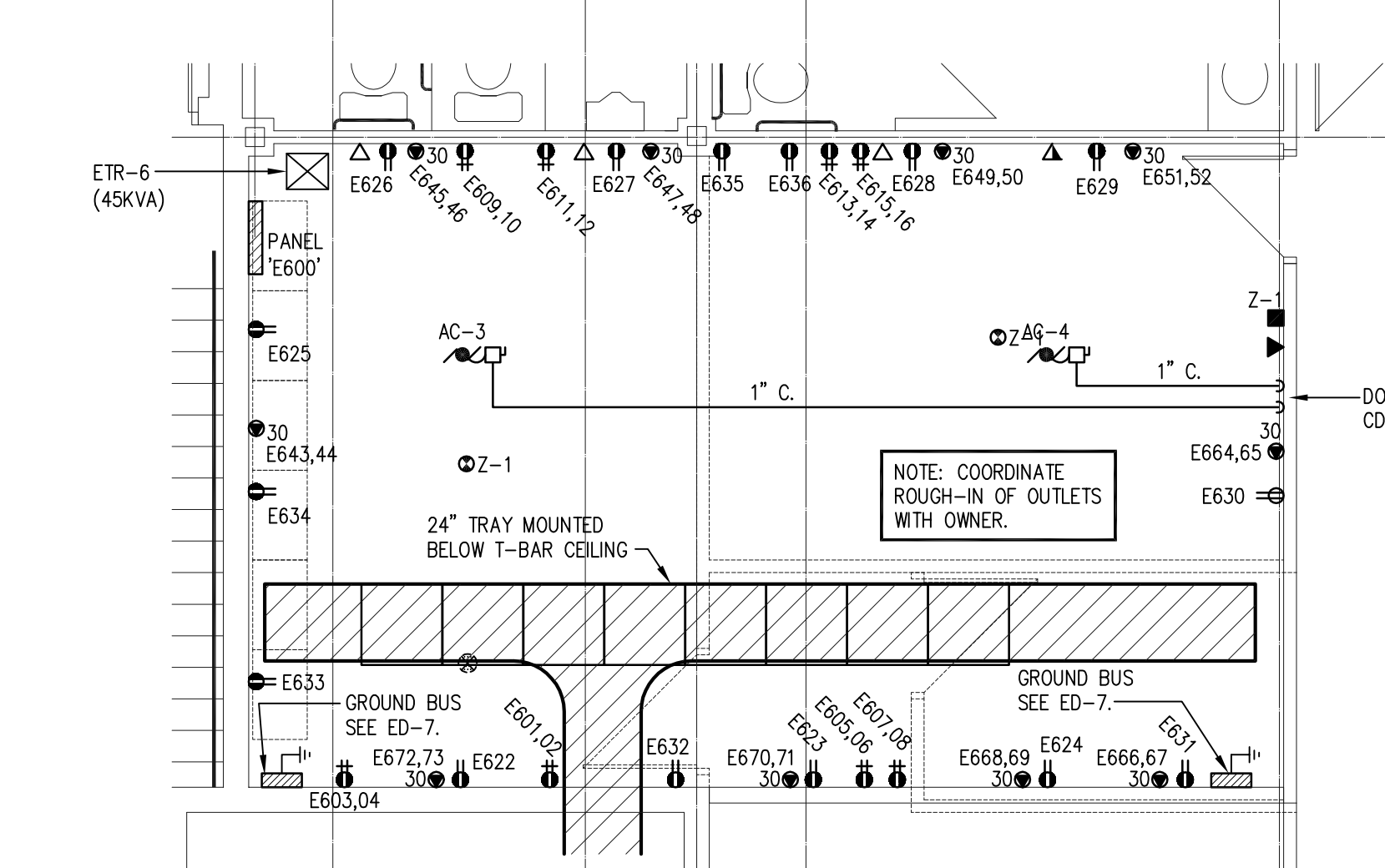
PROJECT: AA/RC
DRAWN: CB
DATE: APRIL 2004
PROJECT NO: 01716
FILE PATH:

REVISIONS:
1. ISSUED FOR 50% REVIEW
FEBRUARY 6, 2004
2. ISSUED FOR 75% REVIEW
MARCH 5, 2004
3. ISSUED FOR PRETENDER REVIEW
APRIL 2004
4. ISSUED FOR TENDER
MAY 14, 2004
5. AS BUILT
JUNE 2007



PANEL BOARD SCHEDULE			
NO.	DESCRIPTION	AMPS	VOLTS
1	RACK #1	1500	15A
2	RACK #2	1500	15A
3	RACK #3	1500	15A
4	RACK #4	1500	15A
5	RACK #5	1500	15A
6	RACK #6	1500	15A
7	RACK #7	1500	15A
8	RACK #8	1500	15A
9	RACK #9	1500	15A
10	RACK #10	1500	15A
11	RACK #11	1500	15A
12	RACK #12	1500	15A
13	RACK #13	1500	15A
14	RACK #14	1500	15A
15	RACK #15	1500	15A
16	RACK #16	1500	15A
17	RACK #17	1500	15A
18	RACK #18	1500	15A
19	RACK #19	1500	15A
20	RACK #20	1500	15A
21	RACK #21	1500	15A
22	RACK #22	1500	15A
23	RACK #23	1500	15A
24	RACK #24	1500	15A
25	RACK #25	1500	15A
26	RACK #26	1500	15A
27	RACK #27	1500	15A
28	RACK #28	1500	15A
29	RACK #29	1500	15A
30	RACK #30	1500	15A

- NOTES:
- 10' MIN. COMPLETE WITH HEAT TRACE CABLE FOR 10' LENGTH OF PIPE. HEAT TRACE IS INSTALLED ON PIPE EXTERIOR.
 - 120V CIRCUIT FOR MOTORIZED PROJECTOR SCREEN. WIRE AND CONNECT AS REQUIRED.
 - 120V CIRCUIT FOR CEILING MOUNTED PROJECTOR. CEILING MOUNTED OUTLET BOX C/W FACEPLATE. W/ EMT DOWN TO WALL MOUNTED OUTLET BOX. PROVIDE FACEPLATES C/W 1/2" BRUSHED HOLE AND PULLSTRONG.
 - RELOCATE DOWN TO FC-10 IN DRAINSPACE.
 - HUMIDIFIER MOUNTED IN CEILING SPACE ABOVE.
 - EXISTING POWER/DATA TO REMAIN.
 - EXISTING FAN F-26 TO REMAIN. RELOCATE SPEED CONTROLLER TO NEW LUNCH ROOM.
 - EXISTING POWER AND SYSTEMS TO REMAIN.
 - 120V CONNECTION TO CONTROL TRANSFORMER FOR MECHANICAL CONTROLS.
 - COORDINATE OUTLET LAYOUT WITH OWNER PRIOR TO ROUGH-IN.
 - RELOCATE 6-15A CIRCUITS TO NEW PANEL 3A (43-84) PROVIDE 100A-3P BREAKER, 483 TO SUB-FEED NEW PANEL 3A (43-84).
 - PRE-ACTION SPRINKLER SYSTEM PRESSURE SWITCH, SOUNDING AND COMPRESSOR. PROGRAM TO ACTIVATE SOUNDING IF BOTH SMOKE DETECTORS IN ROOM GEN-PW-12 OR ROOM PO-PW-17 ACTIVATE OR IF THE MANUAL STATION IN ROOM GEN-PW-12 OR ROOM PO-PW-17 IS PULLED.
 - PROVIDE W/ EMT FROM MECHANICAL CONTROL PANEL TO MAIN PHONE ROOM IN EXISTING MAIN ELECTRICAL ROOM C/W 4 PAIR CAT 6 FOR MODERN CONNECTION.

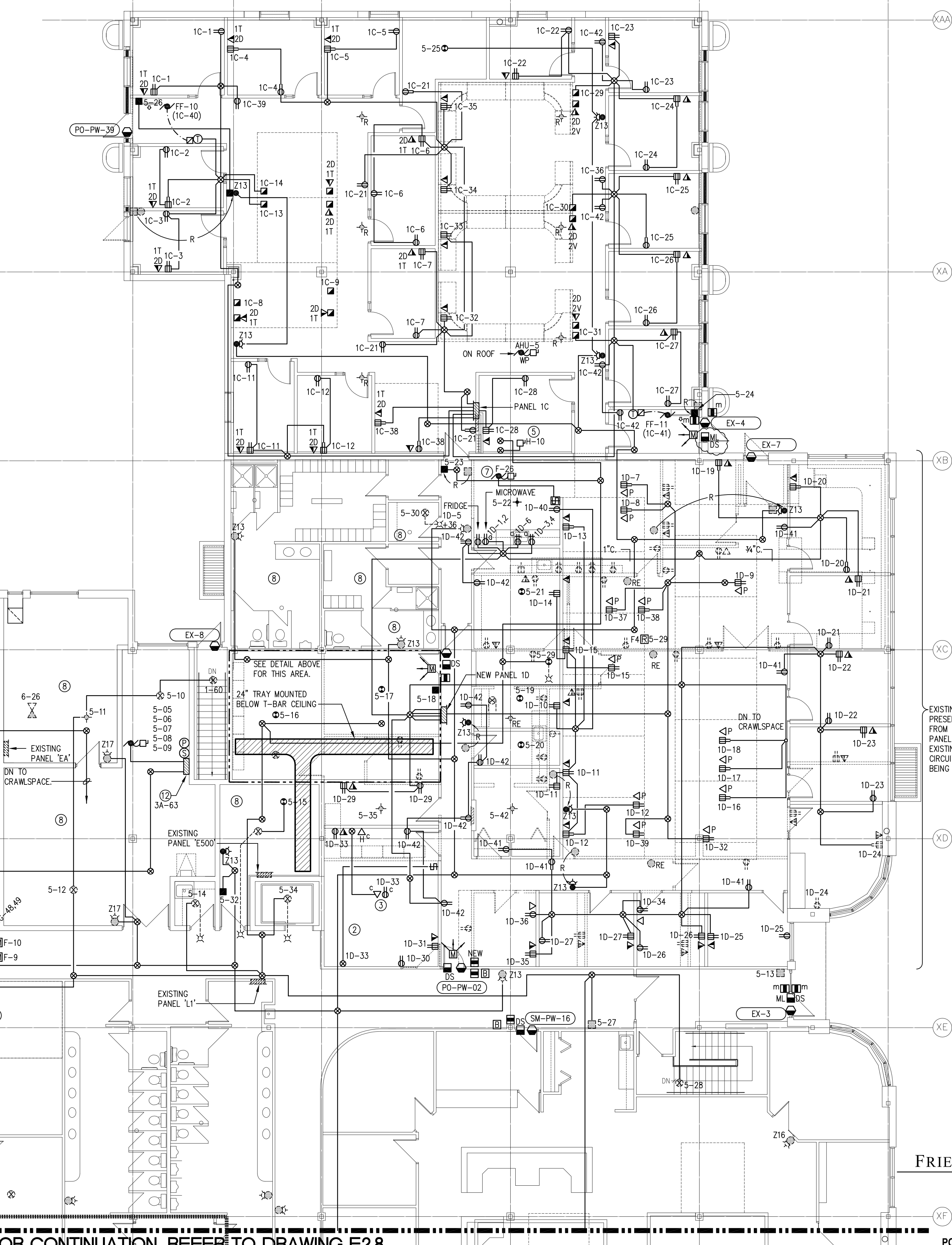


RECORD DRAWING

CONTRACTOR:
Alec Electrical Limited
930 BRADFORD STREET
WINNIPEG, MANITOBA
(204) 697-1000

DATE COMPLETED: _____ SIGNED BY: _____

NOTICE: THIS RECORD DRAWING HAS BEEN PREPARED, BASED UPON INFORMATION FURNISHED BY OTHERS. WHILE THIS INFORMATION IS BELIEVED TO BE RELIABLE, THE CONSULTANT CANNOT ASSURE ITS ACCURACY, AND THIS IS NOT RESPONSIBLE FOR ANY ERRORS OR OMISSIONS WHICH MAY HAVE BEEN INCORPORATED INTO IT AS A RESULT.



SMS ENGINEERING
770 BROADVIEW AVENUE, WINNIPEG, MANITOBA
204.775.5291 Fax 204.772.2150
smsengineering.com

02-019-01

ORIGINAL CONTRACT DRAWING
REVIEWED AND SEALED BY
A.J.M. LOISEL, P. ENG.
MAY 13, 2004

APECM
Certificate of Authorization
SMS Engineering Ltd.
No. 166 Expiry: April 30, 2005

Drawings and specifications, as instruments of service, are the property of the architect. The copyright in the same being reserved to him. No reproduction may be made without the permission of the architect and when made, must bear his name. All plans to be returned to the architect.

The contractor shall verify dimensions and data noted herein with conditions on the site and will be responsible for rectifying any discrepancy to the architect for approval.

This drawing shall not be used for building purposes until countersigned by:

THE CITY OF WINNIPEG

OFFICE ADDITION AND RENOVATION
1155 PACIFIC AVENUE
WINNIPEG, MANITOBA

FRIESEN TOKAR ARCHITECTS

MAIN FLOOR PLAN PART B POWER AND SYSTEMS

E.2.7

2004/02/16/1155 - JANUARY 30, 2005 - 5:45PM CST - PERMITS

PART MAIN FLOOR PLAN - PART B POWER AND SYSTEMS
SCALE 1/100

FOR CONTINUATION, REFER TO DRAWING E28