

WARNING

IF POWER EQUIPMENT OR EXPLOSIVES ARE TO BE USED FOR EXCAVATION ON THIS PROJECT THE CONTRACTOR MUST:

1. NOTIFY THE GAS COMPANY OF THE PROPOSED LOCATION OF EXCAVATION.
2. TAKE PRECAUTION TO AVOID DAMAGE TO GAS COMPANY INSTALLATIONS SEE PROVINCIAL REGULATION 210/72 FOR DETAILS

METRIC

WHOLE NUMBERS INDICATE MILLIMETRES
DECIMALIZED NUMBERS INDICATE METRES

NOTES:

1. BASELINE - BACK OF EXISTING WEST CURB SOUTHBOUND McPHILLIPS STREET. STA. 0+100.0 = SURVEY MONUMENT IN SIDEWALK S.W. CORNER McPHILLIPS STREET AND LOGAN AVENUE.
2. PRE FORMED VEHICLE DETECTOR LOOP TO BE INSTALLED (BY OTHERS) PRIOR TO CONCRETE PAVEMENT CONSTRUCTION.
3. CONSTRUCT NEW PAVEMENT TO GRADES AS SET BY CONTRACT ADMINISTRATOR.
4. TRAFFIC SIGNAL APPURTENANCES TO BE RELOCATED BY OTHERS.
5. ALL DIMENSIONS ARE TO BACK OF CURB.
6. ISOLATE MISCELLANEOUS ITEMS IN NEW CONCRETE WORKS AS PER SD-228C.
7. SEE SHEET 6 FOR BUS STOP UPGRADE DETAILS ON ISLAND.
8. SALVAGE EXISTING BARRIER RAIL AND POSTS IN EXISTING ISLAND.

BENCH MARK
In median of Pembina Hwy, S. of Bishop Grandin Blvd., Tblt. 24.9 m S. of C.L. of bus exit lane located in median of Pembina Hwy @ University Cresc. & 1.1 m E. of W. curb of median.

150 mm W.M.	WATER MAIN	150 mm W.M.	HYDRO	150 mm W.M.	WATER MAIN	150 mm W.M.
⊕	HYDRANT	⊕	M.T.S.	+	HYDRANT	+
⊗	VALVE	⊗	CONCRETE	⊗	VALVE	⊗
300 mm L.D.S.	LAND DRAINAGE SEWER	300 mm L.D.S.	ASPHALT	300 mm L.D.S.	LAND DRAINAGE SEWER	300 mm L.D.S.
250 mm W.W.S.	WASTE WATER SEWER	250 mm W.W.S.	PLANING	250 mm W.W.S.	WASTE WATER SEWER	250 mm W.W.S.
○	MANHOLE	●	SIDEWALK	⊗	Q PROFILE	⊗
□	CATCH BASIN	■	PAVING STONES	⊗	NORTH/WEST GUTTER	⊗
▽	CURB INLET	▲	PARTIAL DEPTH REPAIR	⊗	SOUTH/EAST GUTTER	⊗
⊕	JUNCTIONS	⊕	PROPERTY LINE	⊕	TINTED CONCRETE	⊕
⊕	CULVERT	⊕	SURVEY BAR	⊕		
⊕	GAS	⊕	PARAPLEGIC RAMP	⊕		
EXISTING	LEGEND-PLAN	PROPOSED	EXISTING	LEGEND-PLAN	PROPOSED	EXISTING

UNDERGROUND STRUCTURES

SUPV. U/G STRUCTURES COMMITTEE DATE

NOTE:
LOCATION OF UNDERGROUND STRUCTURES AS SHOWN ARE BASED ON THE BEST INFORMATION AVAILABLE, BUT NO GUARANTEE IS GIVEN THAT ALL EXISTING UTILITIES ARE SHOWN OR THAT THE GIVEN LOCATIONS ARE EXACT. CONFIRMATION OF EXISTENCE AND EXACT LOCATION OF ALL SERVICES MUST BE OBTAINED FROM THE INDIVIDUAL UTILITIES BEFORE PROCEEDING WITH CONSTRUCTION.

B.M.	78-074				
ELEV.	233.165				
NO.	REVISIONS	DATE	BY	DATE	BY
2	ISSUED FOR TENDER	07-11-08	D.B.W.		
1	ISSUED FOR REVIEW	05-23-08	D.B.W.		

DESIGNED BY S.P.C.

DRAWN BY A.J.P.

CHECKED BY D.B.W.

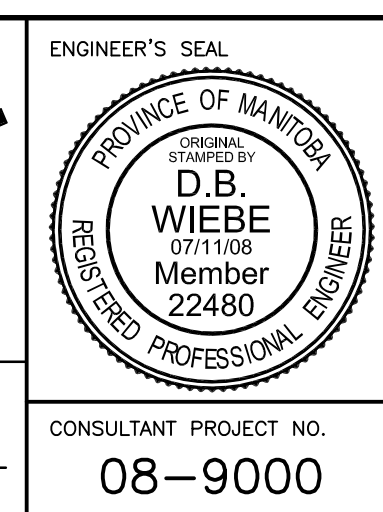
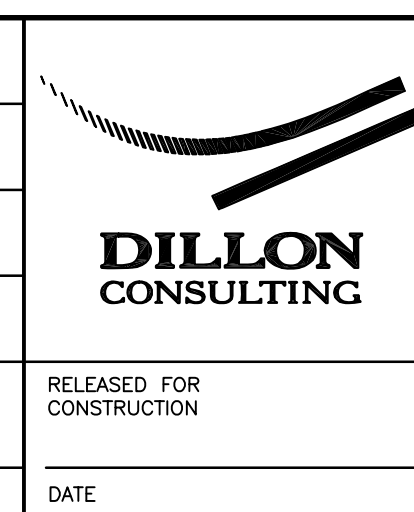
APPROVED BY

HOR. SCALE 1:250

VERTICAL 1:10

RELEASED FOR CONSTRUCTION

DATE MARCH 28, 2008



THE CITY OF WINNIPEG
TRANSIT DEPARTMENT

ON STREET TRANSIT
PRIORITY IMPROVEMENTS - PHASE 2

McPHILLIPS CORRIDOR
McPHILLIPS ST. @ LOGAN AVE.

CITY DRAWING NUMBER
SHEET 3 OF 6

CONSULTANT PROJECT NO.
08-9000