

**PAVEMENT RECONSTRUCTION SECTION WITH BARRIER CURB AND SIDEWALK**

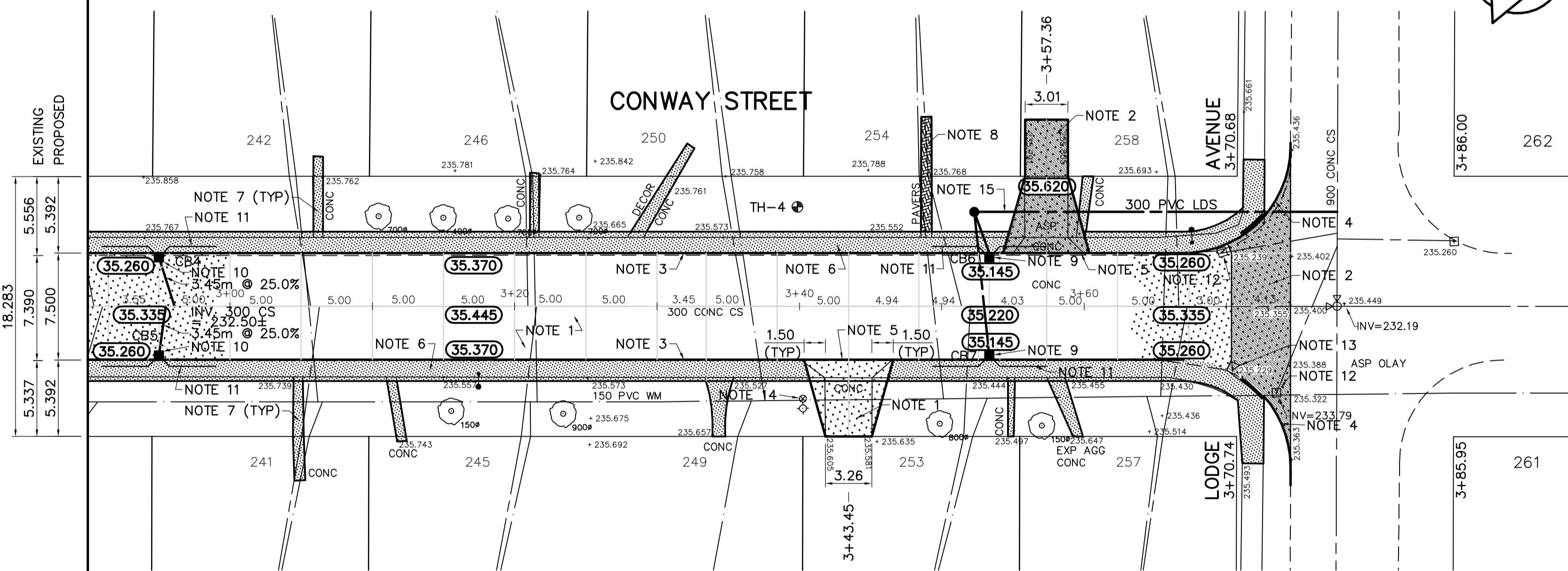
DESCRIPTION	RIM	INVERT			
		NORTH	SOUTH	EAST	WEST
CB 4	35.260			33.660	
CB 5	35.260				33.660
CB 6	35.145				33.545
CB 7	35.145				33.545

**REFERENCE NOTES**

- PAVEMENT DIMENSIONS ARE TO BACK OF CURB
- ADD 200.000 TO DESIGN ELEVATIONS TO OBTAIN GEODETIC DATUM
- BASELINE IS CENTRE LINE RIGHT-OF-WAY
- PROPERTY LINES OBTAINED FROM CITY OF WINNIPEG L.B.I.S., AND NO SCALE FACTOR WAS APPLIED
- REFER TO DRAWING CU01 FOR LAND DRAINAGE WORKS
- REFER TO EARTH TECH FIELD BOOK NO. 4575

**CONSTRUCTION NOTES**

- REMOVE EXISTING PAVEMENT AND CONSTRUCT NEW 150mm REINFORCED CONCRETE PAVEMENT
- REMOVE EXISTING PAVEMENT AND CONSTRUCT NEW 150mm REINFORCED CONCRETE PAVEMENT c/w 50mm ASPHALT OVERLAY (TYPE 1A)
- CONSTRUCT NEW CONCRETE BARRIER CURB (180mm HT, SEPARATE)
- CONSTRUCT NEW MODIFIED CONCRETE BARRIER CURB (180mm HT, INTEGRAL)
- CONSTRUCT NEW MOUNTABLE CURB (50mm HT, INTEGRAL)
- CONSTRUCT NEW 100mm CONCRETE SIDEWALK
- RENEW EXISTING CONCRETE PRIVATE SIDEWALK
- REGRADE EXISTING PAVING STONES
- INSTALL NEW CURB AND GUTTER INLET c/w CATCH BASIN (SD-024) AND CONNECT NEW 250mm LEAD TO EXISTING MANHOLE
- INSTALL NEW CURB AND GUTTER INLET c/w CATCH BASIN (SD-024) AND CONNECT NEW 250mm LEAD TO EXISTING SEWER
- INSTALL 150mm SUBDRAIN
- REMOVE EXISTING CATCH BASIN
- ABANDON EXISTING DRAINAGE INLET
- ADJUST EXISTING WATER VALVE TO GRADE
- SEE DRAWING CU-01 FOR LAND DRAINAGE SEWER



**METRIC**  
WHOLE NUMBERS INDICATE MILLIMETRES  
DECIMALIZED NUMBERS INDICATE METRES

150 mm W.M.	WATERMAIN	150 mm W.M.	HYDRO	150 mm W.M.	HYDRO	150 mm W.M.	HYDRO	150 mm W.M.	HYDRO
◇	HYDRANT	+	M.T.S.	×	PROFILE	—	WEST GUTTER	—	WEST GUTTER
○	VALVE	○	CONCRETE	○	EAST GUTTER	—	WEST PROPERTY LINE	—	WEST PROPERTY LINE
—	LAND DRAINAGE SEWER	—	ASPHALT	—	WEST PROPERTY LINE	—	EAST PROPERTY LINE	—	EAST PROPERTY LINE
—	WASTEWATER SEWER	—	PROPERTY LINE	—	SURVEY BAR	—	TREE	—	TREE
○	MANHOLE	○	CONCRETE	○	SURVEY BAR	—	SIDEWALK RAMP	—	SIDEWALK RAMP
□	CATCH BASIN	□	ASPHALT	□	CONCRETE SIDEWALK	—	FENCE	—	FENCE
▽	CURB INLET	▽	CONCRETE	▽	FENCE	—		—	
—	JUNCTIONS	—	CONCRETE	—		—		—	
—	CULVERT	—	CONCRETE	—		—		—	
—	GAS	—	CONCRETE	—		—		—	
—	EXISTING	—	CONCRETE	—		—		—	
—	LEGEND - PLAN	—	CONCRETE	—		—		—	
—	PROPOSED	—	CONCRETE	—		—		—	
—	EXISTING	—	CONCRETE	—		—		—	
—	LEGEND - PROFILE	—	CONCRETE	—		—		—	
—	PROPOSED	—	CONCRETE	—		—		—	
—	EXISTING	—	CONCRETE	—		—		—	

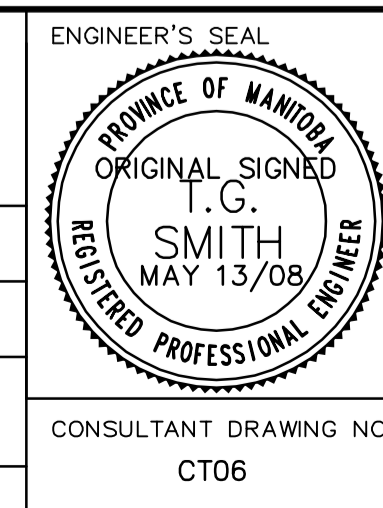
**LOCATION APPROVED UNDERGROUND STRUCTURES**

SUPV. U/G STRUCTURES DATE COMMITTEE

**NOTE:**  
LOCATION OF UNDERGROUND STRUCTURES AS SHOWN ARE BASED ON THE BEST INFORMATION AVAILABLE, BUT NO GUARANTEE IS GIVEN THAT ALL EXISTING UTILITIES ARE SHOWN OR THAT THE GIVEN LOCATIONS ARE EXACT. CONFIRMATION OF EXISTENCE AND EXACT LOCATION OF ALL SERVICES MUST BE OBTAINED FROM THE INDIVIDUAL UTILITIES BEFORE PROCEEDING WITH CONSTRUCTION.

B.M. 39-007	1st. in Conc. platform of pumphouse, S. of Portage Ave. @ Conway St., 0.4m S.W. of N.E. Cor. of platform.	ELEV. 236.708
0	ISSUED FOR TENDER	06/06/08 BC
A	ISSUED FOR REVIEW	04/14/08 BC
NO. REVISIONS	DATE	BY

<b>EarthTech</b> A tyco International Ltd. Company	
DESIGNED BY	BC
CHECKED BY	TGS
DRAWN BY	BC
APPROVED BY	
HOR. SCALE:	1:250
VERTICAL:	1:10
RELEASED FOR CONSTRUCTION BY:	
DATE	03/07/2008
DATE	



**THE CITY OF WINNIPEG**  
PUBLIC WORKS DEPARTMENT  
TRANSPORTATION ENGINEERING DIVISION

**CONWAY STREET**  
PORTAGE AVENUE TO LODGE AVENUE

PAVEMENT RECONSTRUCTION  
PLAN/PROFILE  
STATION 2+90 TO LODGE AVENUE

CITY DRAWING NUMBER  
SHEET 3 OF 3

CONSULTANT DRAWING NO. CT06