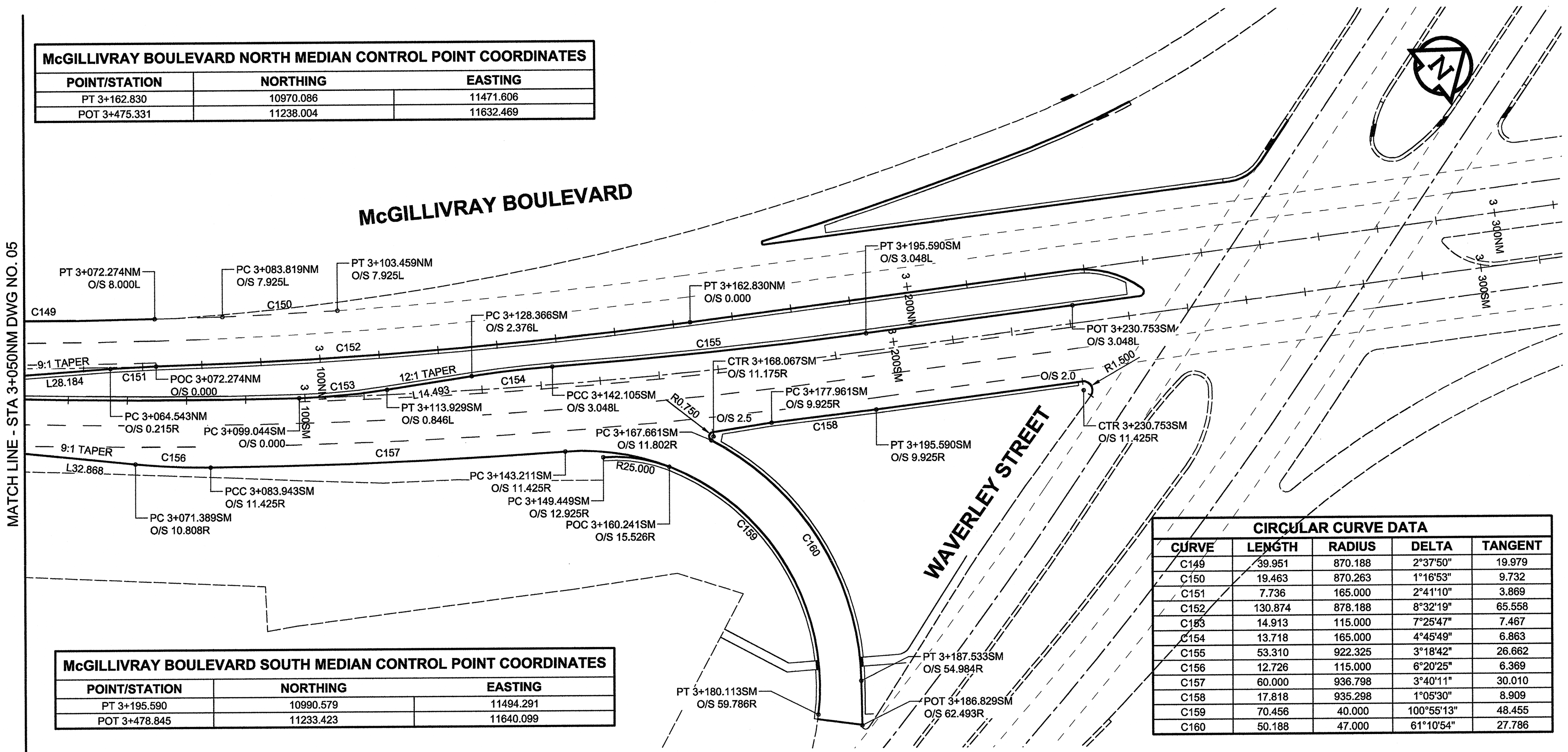
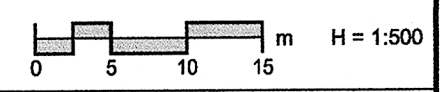


POINT/STATION	NORTHING	EASTING
PT 3+162.830	10970.086	11471.606
POT 3+475.331	11238.004	11632.469

POINT/STATION	NORTHING	EASTING
PT 3+195.590	10990.579	11494.291
POT 3+478.845	11233.423	11640.099



CURVE	LENGTH	RADIUS	DELTA	TANGENT
C149	39.951	870.188	2°37'50"	19.979
C150	19.463	870.263	1°16'53"	9.732
C151	7.736	165.000	2°41'10"	3.869
C152	130.874	878.188	8°32'19"	65.558
C153	14.913	115.000	7°25'47"	7.467
C154	13.718	165.000	4°45'49"	6.863
C155	53.310	922.325	3°18'42"	26.662
C156	12.726	115.000	6°20'25"	6.369
C157	60.000	936.798	3°40'11"	30.010
C158	17.818	935.298	1°05'30"	8.909
C159	70.456	40.000	100°55'13"	48.455
C160	50.188	47.000	61°10'54"	27.786



APEGM
 Certificate of Authorization
 UMA Engineering Ltd. (MB)
 No. 256 Date: June 21/08

BID OPPORTUNITY NO. 466-2008

METRIC
 WHOLE NUMBERS INDICATE MILLIMETRES
 DECIMALIZED NUMBERS INDICATE METRES

EXISTING	LEGEND - PLAN	NEW	EXISTING	LEGEND - PLAN	NEW	EXISTING	LEGEND - PLAN	NEW
○	MANHOLE	●	CONCRETE PAVEMENT	[Pattern]	LOCATION APPROVED UNDERGROUND STRUCTURES	BM ELEV.		
□	CATCH BASIN / CATCH PIT	■	ASPHALT PAVEMENT	[Pattern]				
△	CURB INLET WITH BOX	▲	CONC. SIDEWALK/MEDIAN	[Pattern]				
○	TREE		PAVING STONE	[Pattern]				
⊕	TEST HOLE		GRAVEL	[Pattern]				
—	PROPERTY LINE		RAMP CURB	[Pattern]				
—	SURVEY BAR		PLANING/REMOVAL	[Pattern]				
—	FENCE		GLASGRID PAVT REPAIR	[Pattern]				
—	BOC/EOPAVT							
—	ELEVATION	(33.100)						
—	TRAFFIC SIGN							

LOCATION APPROVED UNDERGROUND STRUCTURES

DATE: _____

NOTE: LOCATION OF UNDERGROUND STRUCTURES AS SHOWN ARE BASED ON THE BEST INFORMATION AVAILABLE. BUT NO GUARANTEE IS GIVEN THAT ALL EXISTING UTILITIES ARE SHOWN OR THAT THE GIVEN LOCATIONS ARE EXACT. CONFIRMATION OF EXISTENCE AND EXACT LOCATION OF ALL SERVICES MUST BE OBTAINED FROM THE INDIVIDUAL UTILITIES BEFORE PROCEEDING WITH CONSTRUCTION.

UMA | AECOM

DESIGNED BY: WRJ
 CHECKED BY: JGK
 DRAWN BY: DID
 APPROVED BY: BWB
 HOR. SCALE: 1:500
 VERT. SCALE: N/A
 DATE: 08/08/27

PROFESSIONAL'S SEAL
 PROVINCE OF MANITOBA
 REGISTERED PROFESSIONAL ENGINEER
 R. P. BRUCE
 CONSULTANT DRAWING NO. 0265-406-00_01-CT1006_RX.dwg

THE CITY OF WINNIPEG
 PUBLIC WORKS DEPARTMENT
 TRANSPORTATION ENGINEERING DIVISION

McGILLIVRAY BOULEVARD
 120m WEST OF KENASTON BOULEVARD
 TO WAVERLEY STREET
 WIDENING AND REHABILITATION
 HORIZONTAL GEOMETRY
 STA 3+050NM TO WAVERLEY STREET

CITY DRAWING NUMBER: P-3294-06
 SHEET: 6 OF 44
 DRAWING No. 06 REV 0