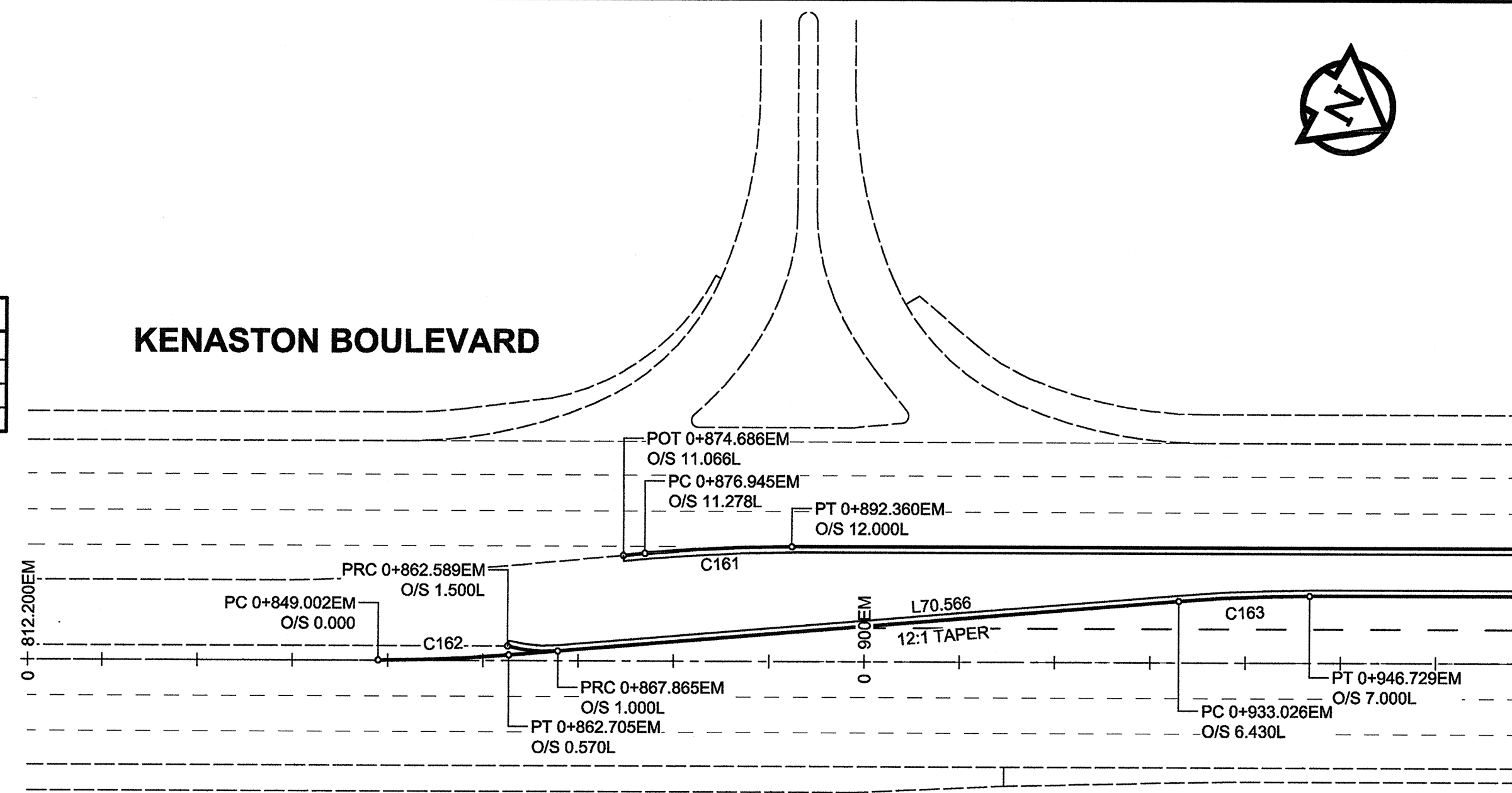
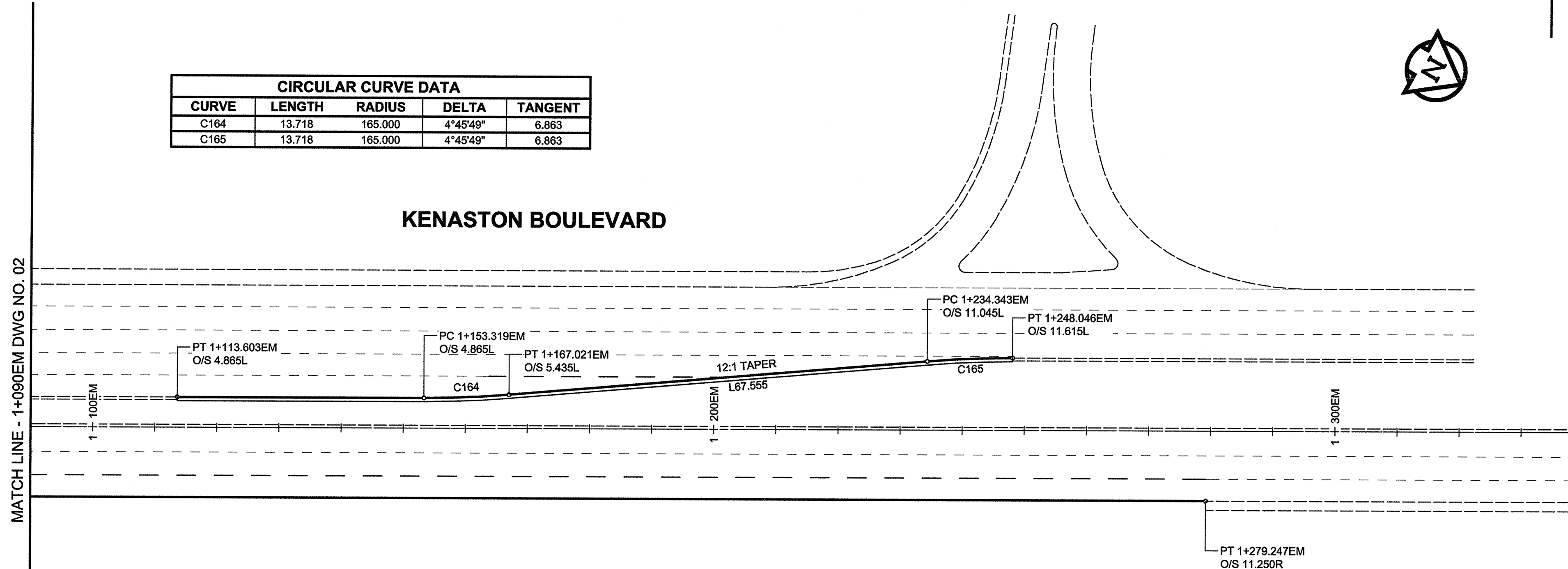


CIRCULAR CURVE DATA				
CURVE	LENGTH	RADIUS	DELTA	TANGENT
C161	15.438	165.000	5°21'39"	7.725
C162	13.718	165.000	4°45'49"	6.863
C163	13.718	165.000	4°45'49"	6.863



KENASTON BOULEVARD EAST MEDIAN CONTROL POINT COORDINATES		
POINT/STATION	NORTHING	EASTING
POT 0+812.200	9867.847	10149.317
PI 1+016.478	10046.770	10050.746
PI 1+046.979	10073.462	10035.988
POT 1+399.146	10381.776	9865.800

CIRCULAR CURVE DATA				
CURVE	LENGTH	RADIUS	DELTA	TANGENT
C164	13.718	165.000	4°45'49"	6.863
C165	13.718	165.000	4°45'49"	6.863



0 5 10 15 m H = 1:500

APEGM
 Certificate of Authorization
 UMA Engineering Ltd. (MB)
 No. 256 Date: June 27/08

METRIC
 WHOLE NUMBERS INDICATE MILLIMETRES
 DECIMAL NUMBERS INDICATE METRES

BID OPPORTUNITY NO. 466-2008

EXISTING	LEGEND - PLAN	NEW	EXISTING	LEGEND - PLAN	NEW	EXISTING	LEGEND - PLAN	NEW
○	NATURAL GAS	○	○	MANHOLE	●	■	CONCRETE PAVEMENT	■
□	MTS	□	□	CATCH BASIN / CATCH PIT	■	■	ASPHALT PAVEMENT	■
△	HYDRO	△	△	CURB INLET WITH BOX	▲	■	CONC. SIDEWALK/MEDIAN	■
○	CATV	○	○	TREE	▲	■	PAVING STONE	■
⊕	TRAFFIC SIGNALS/PIT	⊕	⊕	TEST HOLE	▲	■	GRAVEL	■
⊕	LAND DRAINAGE SEWER	⊕	⊕	PROPERTY LINE	▲	■	RAMP CURB	■
⊕	SANITARY/COMBINED SEWER	⊕	⊕	SURVEY BAR	▲	■	PLANING/REMOVAL	■
⊕	SSP/DCP	⊕	⊕	FENCE	▲	■	GLASGRID PAVT REPAIR	■
⊕	WATERMAIN	⊕	⊕	BOC/EOPAVT	▲	■		
⊕	SUBDRAIN	⊕	⊕	ELEVATION	▲	■		
⊕	DITCH	⊕	⊕	TRAFFIC SIGN	▲	■		

LOCATION APPROVED UNDERGROUND STRUCTURES
 SUPR. U/G STRUCTURES DATE COMMITTEE
 NOTE: LOCATION OF UNDERGROUND STRUCTURES AS SHOWN ARE BASED ON THE BEST INFORMATION AVAILABLE. BUT NO GUARANTEE IS GIVEN THAT ALL EXISTING UTILITIES ARE SHOWN OR THAT THE GIVEN LOCATIONS ARE EXACT. CONFIRMATION OF EXISTENCE AND EXACT LOCATION OF ALL SERVICES MUST BE OBTAINED FROM THE INDIVIDUAL UTILITIES BEFORE PROCEEDING WITH CONSTRUCTION.

NO.	REVISIONS	DATE	BY
0	ISSUED FOR CONSTRUCTION	08/08/27	DID

DESIGNED BY	WRJ	CHECKED BY	JGK
DRAWN BY	DID	APPROVED BY	BWB
HOR. SCALE	1:500	RELEASED FOR CONSTRUCTION	
VERT. SCALE	N/A	DATE	08/08/27

PROFESSIONAL'S SEAL
 R. P. BRUCE
 CONSULTANT DRAWING NO. 0265-406-00_01-CT1007_RX.dwg

THE CITY OF WINNIPEG
 PUBLIC WORKS DEPARTMENT
 TRANSPORTATION ENGINEERING DIVISION
 120m WEST OF KENASTON BOULEVARD TO WAVERLEY STREET
 WIDENING AND REHABILITATION
 HORIZONTAL GEOMETRY KENASTON BOULEVARD
 STA 0+812.200EM TO STA 0+970EM & STA 1+090 TO STA 1+300EM

McGILLIVRAY BOULEVARD
 120m WEST OF KENASTON BOULEVARD TO WAVERLEY STREET
 WIDENING AND REHABILITATION
 HORIZONTAL GEOMETRY KENASTON BOULEVARD
 STA 0+812.200EM TO STA 0+970EM & STA 1+090 TO STA 1+300EM

CITY DRAWING NUMBER P-3294-07
 SHEET 7 OF 44
 DRAWING No. 07 REV 0