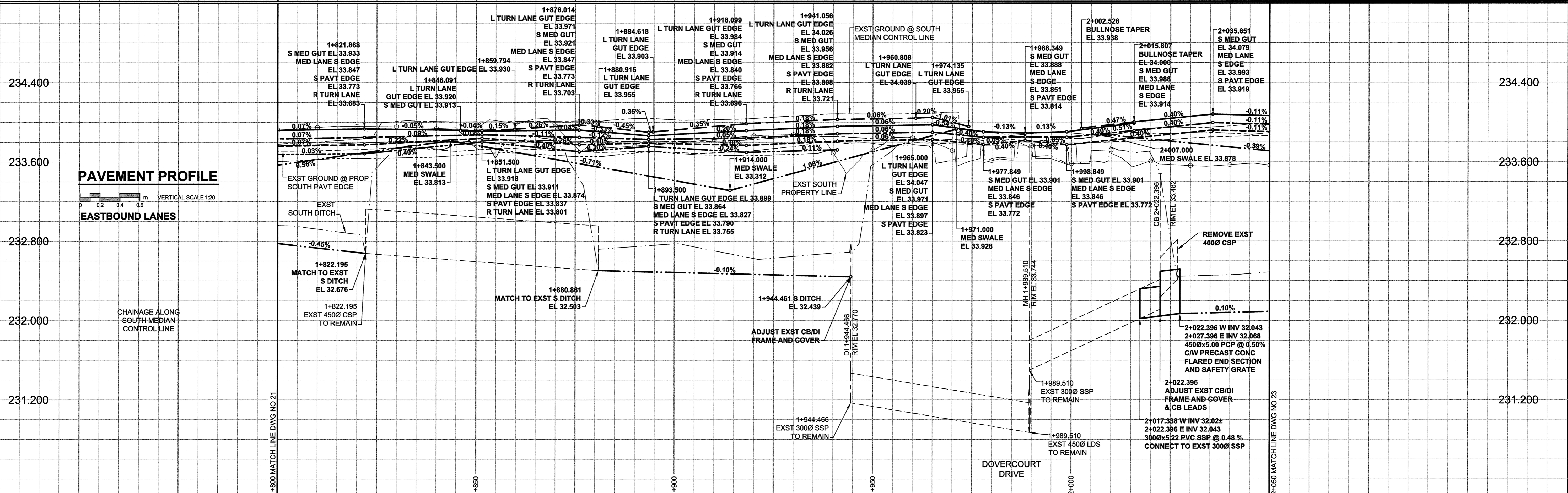
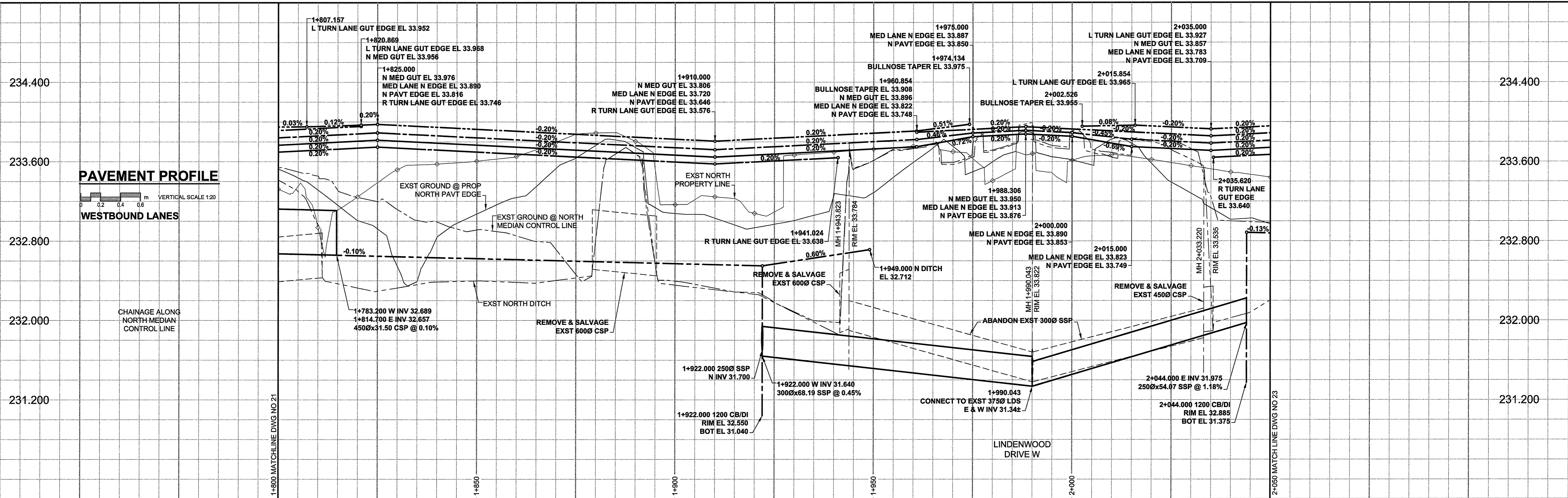


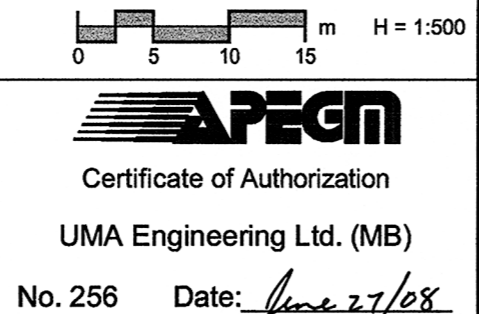
A1 SIZE 23.4" x 33.1" (594mm x 841mm)

PLOT: 08/06/26 4:56:21 PM

UMA FILE NAME: 0285-406-00_01-CT1022_RX.dwg Saved By: coopark



METRIC
 WHOLE NUMBERS INDICATE MILLIMETRES
 DECIMALIZED NUMBERS INDICATE METRES



BID OPPORTUNITY NO. 466-2008 No. 256 Date: June 27/08

LOCATION APPROVED
 UNDERGROUND STRUCTURES

BM -
 ELEV -

NO.	REVISIONS	DATE	BY
0	ISSUED FOR CONSTRUCTION	08/06/27	KLC

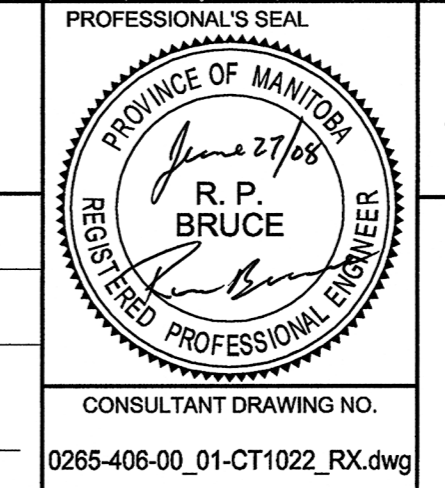
NOTE:
 LOCATION OF UNDERGROUND STRUCTURES AS SHOWN ARE BASED ON THE BEST INFORMATION AVAILABLE. BUT NO GUARANTEE IS GIVEN THAT ALL EXISTING UTILITIES ARE SHOWN OR THAT THE GIVEN LOCATIONS ARE EXACT. CONFIRMATION OF EXISTENCE AND EXACT LOCATION OF ALL SERVICES MUST BE OBTAINED FROM THE INDIVIDUAL UTILITIES BEFORE PROCEEDING WITH CONSTRUCTION.

DESIGNED BY	WRJ	CHECKED BY	RPB
DRAWN BY	KLC	APPROVED BY	BWB
HOR. SCALE	1:500	RELEASED FOR CONSTRUCTION	
VERT. SCALE	1:20	DATE	08/06/27

UMA | AECOM

© 2008 UMA ENGINEERING LTD. ALL RIGHTS RESERVED.

CONSULTANT DRAWING NO. 0285-406-00_01-CT1022_RX.dwg



THE CITY OF WINNIPEG
 PUBLIC WORKS DEPARTMENT
 TRANSPORTATION ENGINEERING DIVISION

McGILLIVRAY BOULEVARD
120m WEST OF KENASTON BOULEVARD
TO WAVERLEY STREET
WIDENING AND REHABILITATION
 VERTICAL ALIGNMENT
 STA 1+800 TO STA 2+050

CITY DRAWING NUMBER P-3294-22
 SHEET 22 OF 44
 DRAWING No. 22 REV 0