

A1 SIZE 23.4" x 33.1" (594mm x 841mm)

PLT: 08/06/25 5:00:56 PM

UMA FILE NAME: 0285-406-00_01-CT1023_RX.dwg Saved By: ccooperk

234.400

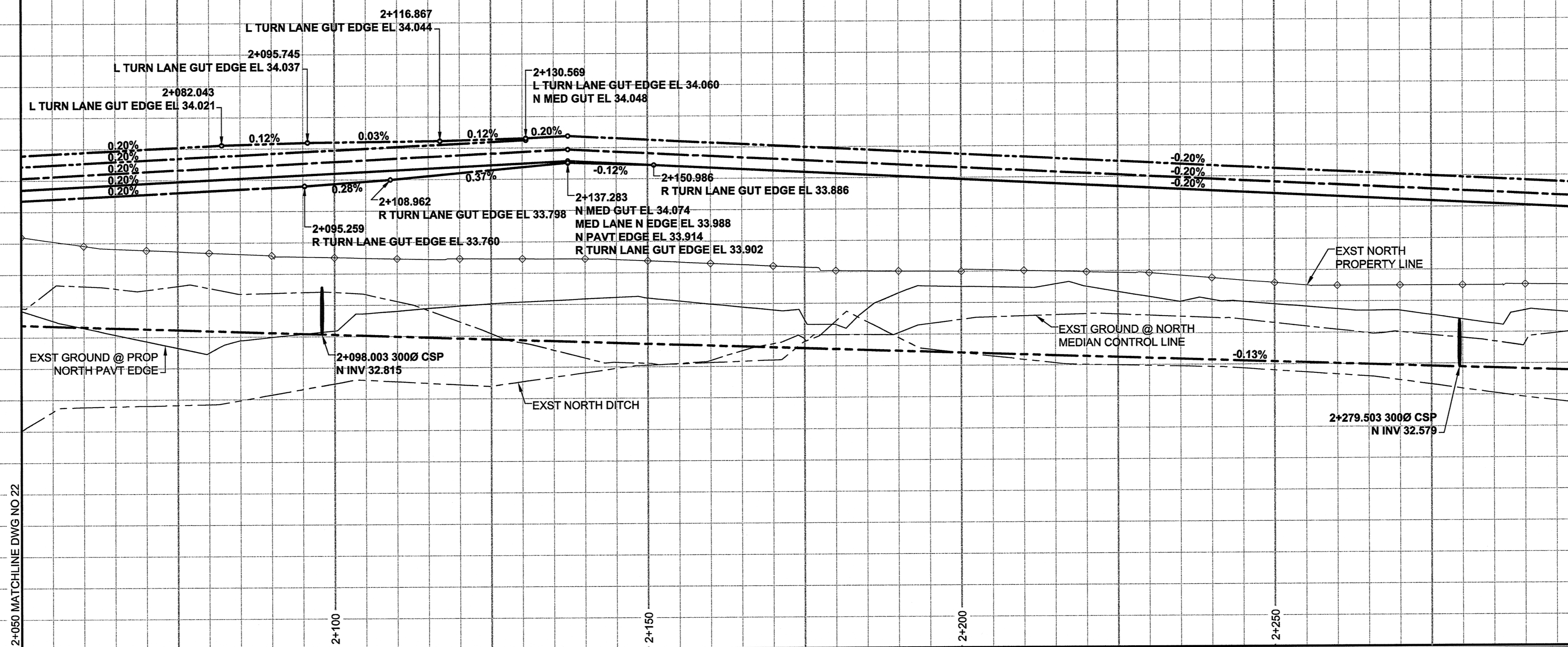
233.600

232.800

232.000

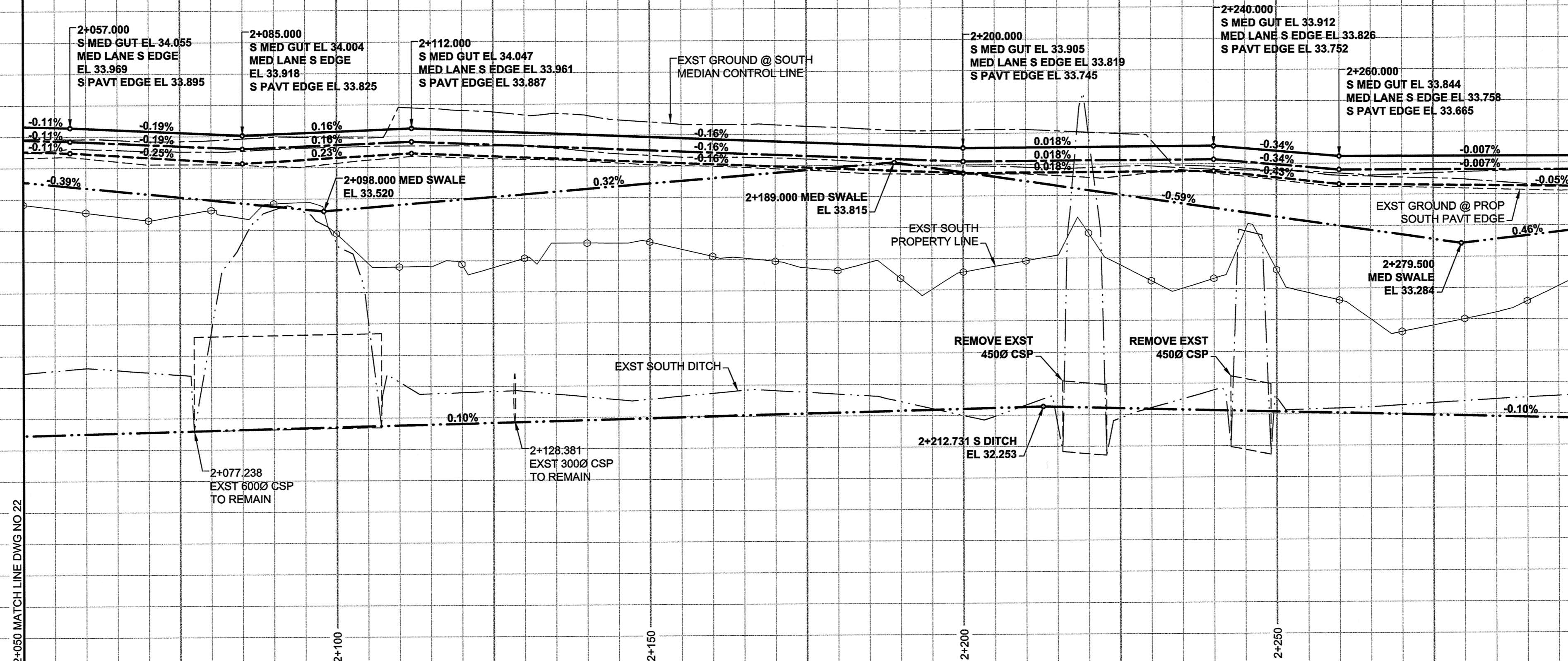
PAVEMENT PROFILE

WESTBOUND LANES
VERTICAL SCALE 1:20



PAVEMENT PROFILE

EASTBOUND LANES
VERTICAL SCALE 1:20



METRIC

WHOLE NUMBERS INDICATE MILLIMETRES
DECIMALIZED NUMBERS INDICATE METRES
UMA Engineering Ltd. (MB)
Certificate of Authorization
Date: June 27/08



LOCATION APPROVED UNDERGROUND STRUCTURES

NOTE:
LOCATION OF UNDERGROUND STRUCTURES AS SHOWN ARE BASED ON THE BEST INFORMATION AVAILABLE. BUT NO GUARANTEE IS GIVEN THAT ALL EXISTING UTILITIES ARE SHOWN OR THAT THE GIVEN LOCATIONS ARE EXACT. CONFIRMATION OF EXISTENCE AND EXACT LOCATION OF ALL SERVICES MUST BE OBTAINED FROM THE INDIVIDUAL UTILITIES BEFORE PROCEEDING WITH CONSTRUCTION.

ISSUED FOR CONSTRUCTION	08/08/27	KLC	
NO.	REVISIONS	YYMMDD	BY

DESIGNED BY	WRJ	CHECKED BY	RPB
DRAWN BY	KLC	APPROVED BY	BWB
HOR. SCALE	1:500	RELEASED FOR CONSTRUCTION	
VERT. SCALE	1:20	DATE	08-07-07

PROFESSIONAL'S SEAL
PROVINCE OF MANITOBA
REGISTERED PROFESSIONAL ENGINEER
R.P. BRUCE
CONSULTANT DRAWING NO.
0285-406-00_01-CT1023_RX.dwg

THE CITY OF WINNIPEG
PUBLIC WORKS DEPARTMENT
TRANSPORTATION ENGINEERING DIVISION
McGILLIVRAY BOULEVARD
120m WEST OF KENASTON BOULEVARD
TO WAVERLEY STREET
WIDENING AND REHABILITATION
VERTICAL ALIGNMENT
STA 2+050 TO STA 2+300

CITY DRAWING NUMBER P-3294-23
SHEET 23 OF 44
DRAWING No. 23
REV 0