

A1 SIZE 23.4" x 35.1" (594mm x 891mm)

PLOT: 08/06/26 5:13:53 PM

UMA FILE NAME: 0265-406-00\_01-CT1027\_RX.dwg Saved By: cooperk

234.400

233.600

232.800

232.000

231.200

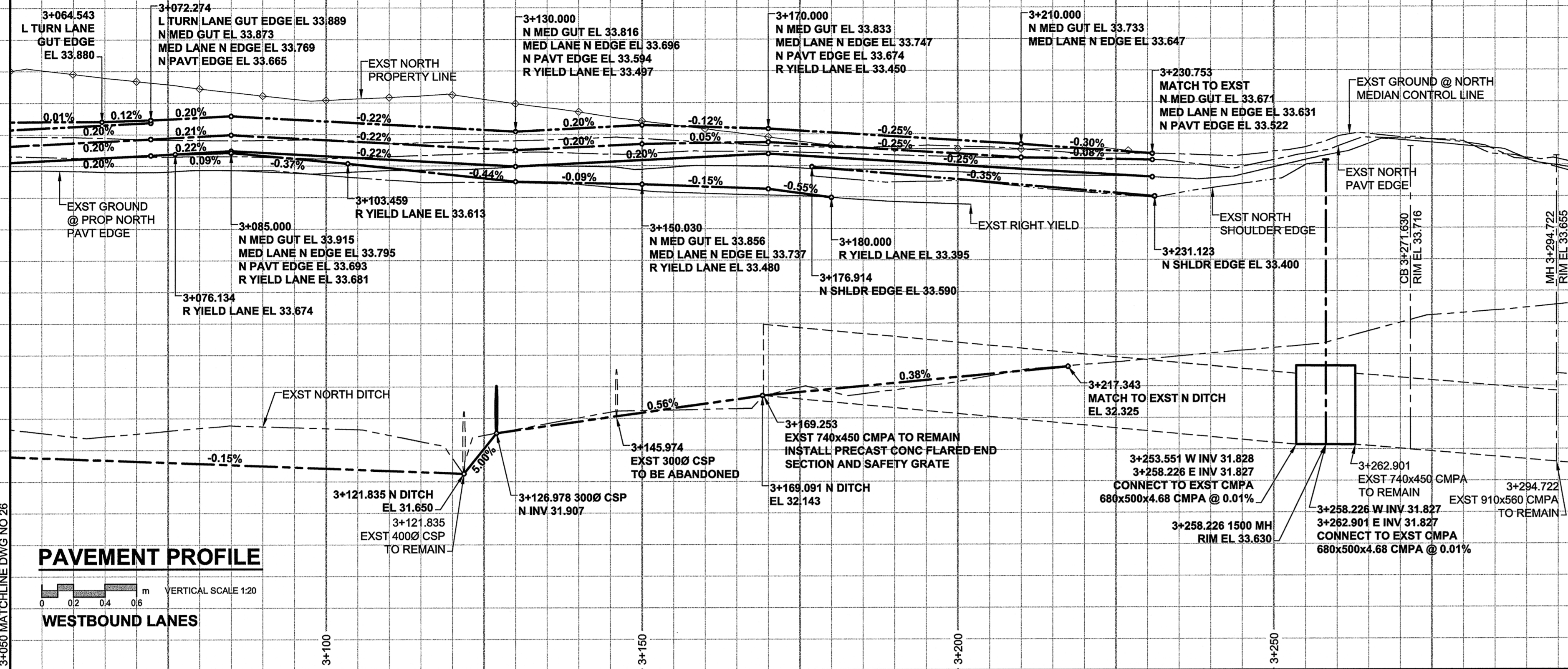
234.400

233.600

232.800

232.000

231.200



234.400

233.600

232.800

232.000

231.200

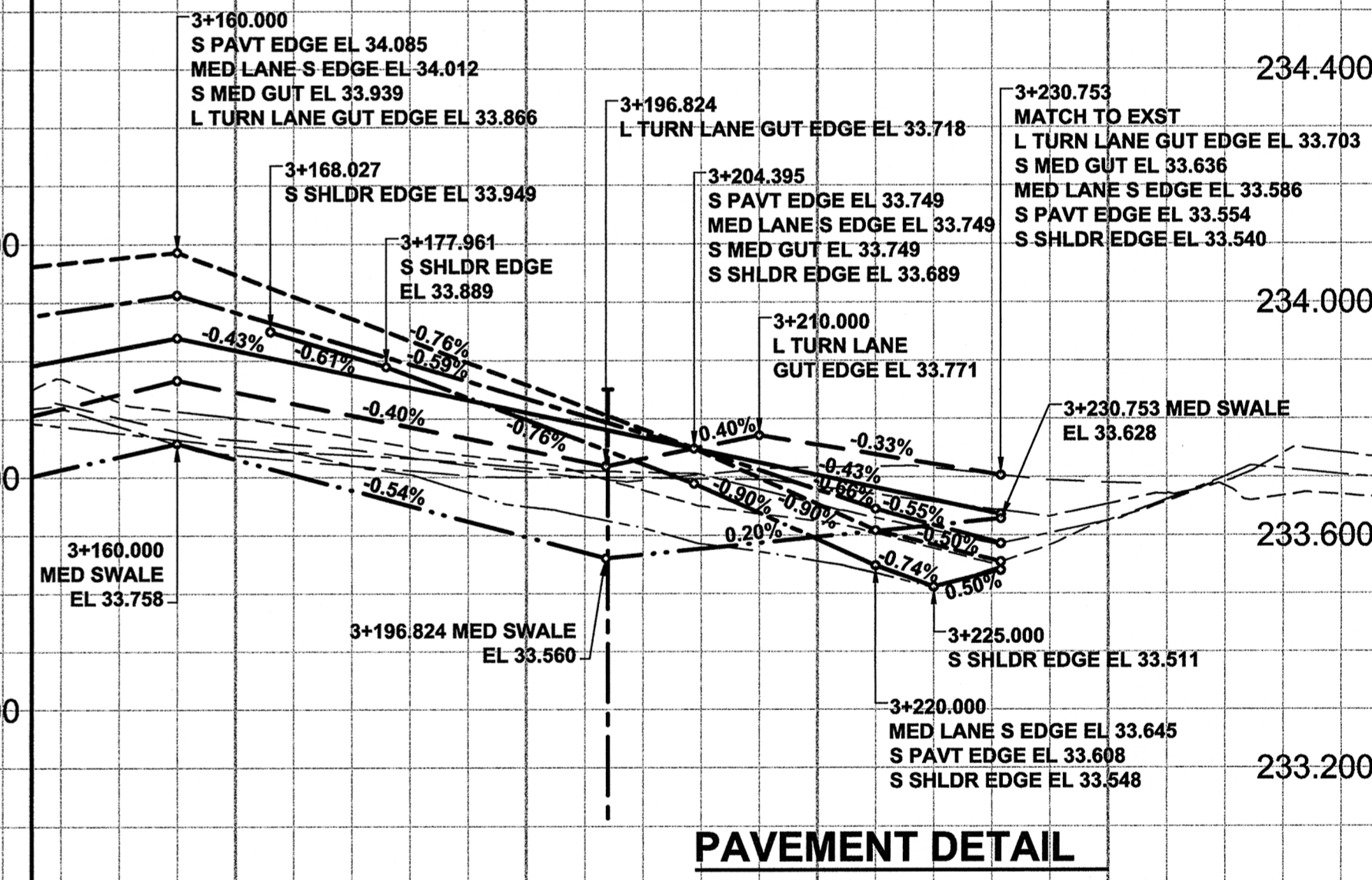
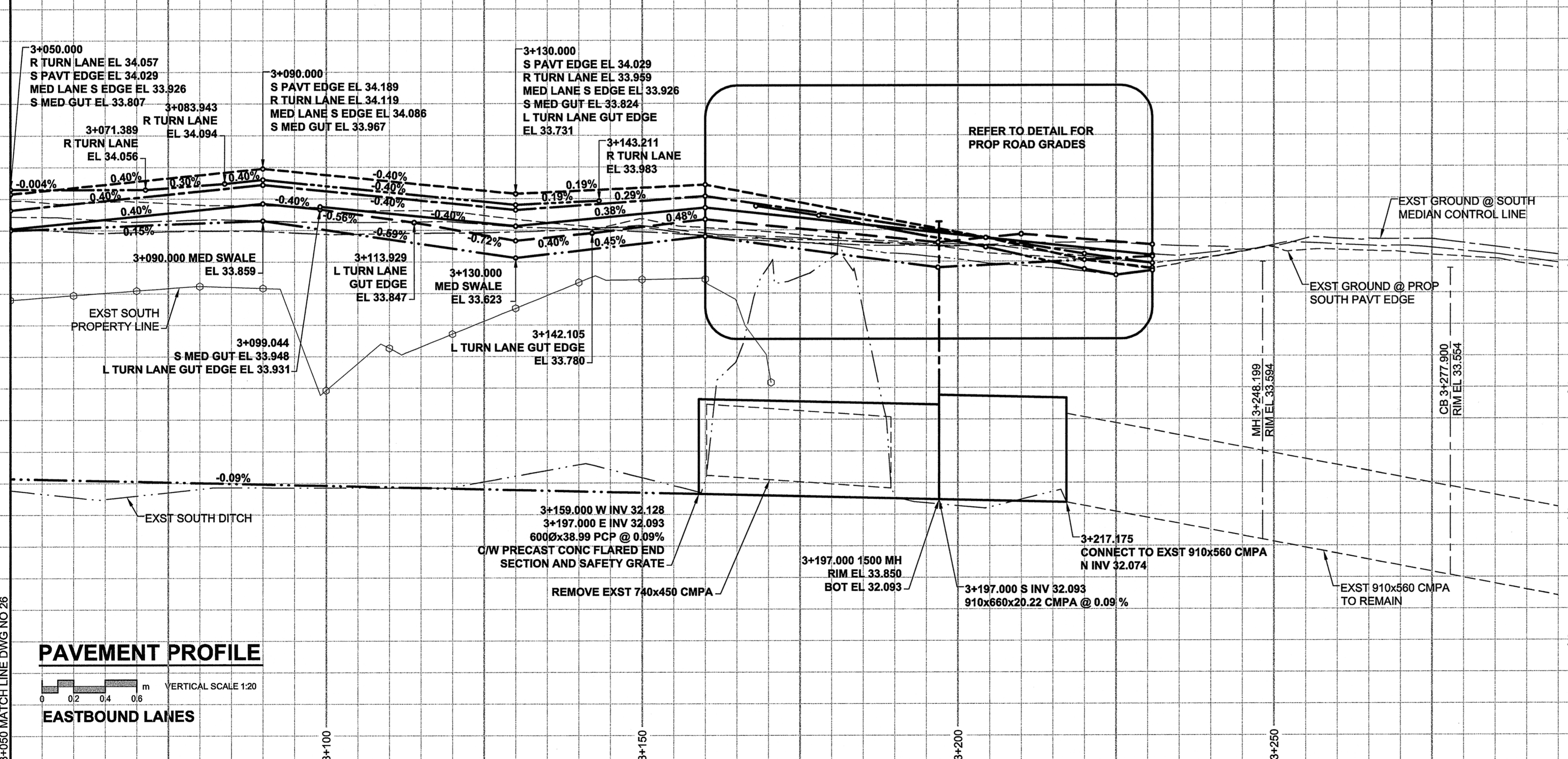
234.400

233.600

232.800

232.000

231.200

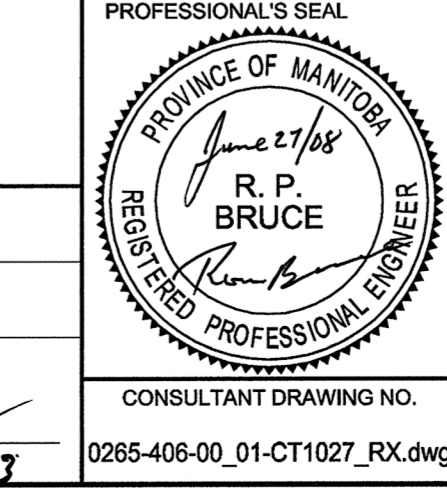


**LOCATION APPROVED**  
UNDERGROUND STRUCTURES

NO.	ISSUED FOR CONSTRUCTION	DATE	BY
0		08/06/27	KLC
	REVISIONS	YY/MM/DD	

NOTE:  
LOCATION OF UNDERGROUND STRUCTURES AS SHOWN ARE BASED ON THE BEST INFORMATION AVAILABLE. BUT NO GUARANTEE IS GIVEN THAT ALL EXISTING UTILITIES ARE SHOWN OR THAT THE GIVEN LOCATIONS ARE EXACT. CONFIRMATION OF EXISTENCE AND EXACT LOCATION OF ALL SERVICES MUST BE OBTAINED FROM THE INDIVIDUAL UTILITIES BEFORE PROCEEDING WITH CONSTRUCTION.

DESIGNED BY	WRJ	CHECKED BY	RPB
DRAWN BY	KLC	APPROVED BY	BWB
HOR. SCALE	1:500	RELEASED FOR CONSTRUCTION	
VERT. SCALE	AS SHOWN	DATE	08/06/27



**THE CITY OF WINNIPEG**  
PUBLIC WORKS DEPARTMENT  
TRANSPORTATION ENGINEERING DIVISION

McGILLIVRAY BOULEVARD  
120m WEST OF KENASTON BOULEVARD  
TO WAVERLEY STREET  
WIDENING AND REHABILITATION  
VERTICAL ALIGNMENT  
STA 3+050 TO WAVERLEY STREET

CITY DRAWING NUMBER  
P-3294-27

SHEET 27 OF 44

DRAWING No. 27 REV 0

**METRIC**  
WHOLE NUMBERS INDICATE MILLIMETRES  
DECIMALIZED NUMBERS INDICATE METRES

**APCGM**  
Certificate of Authorization  
UMA Engineering Ltd. (MB)  
No. 256 Date: June 27/08

BID OPPORTUNITY NO. 466-2008

UMA | AECOM

© 2008 UMA ENGINEERING LTD. ALL RIGHTS RESERVED.