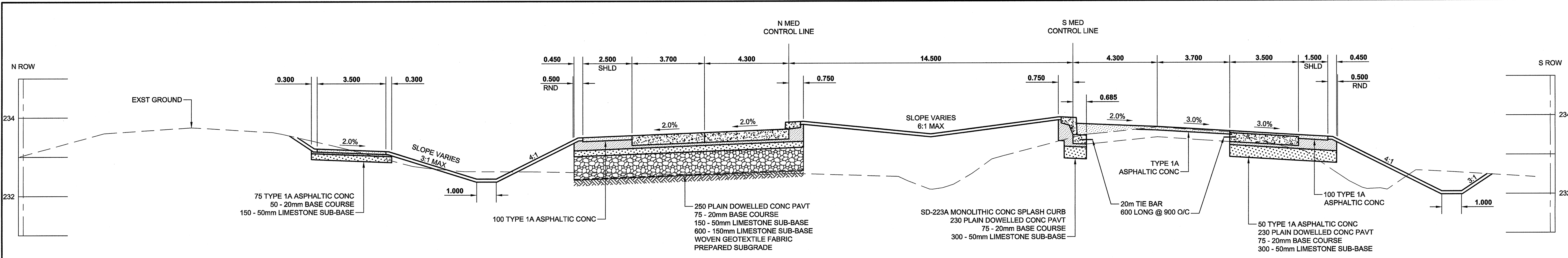


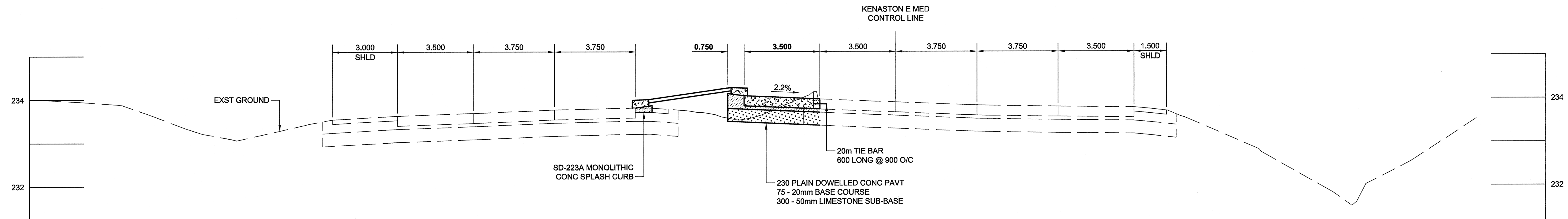
A1 SIZE 23.4" x 33.1" (594mm x 841mm)

PLOT: 08/06/28 5:39:32 PM

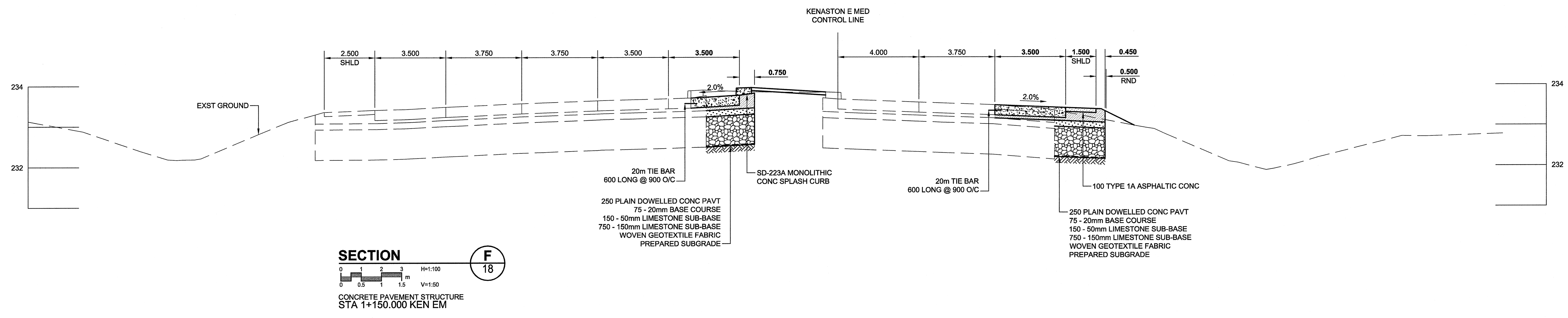
UMA FILE NAME: 0285-406-00\_01-CT3023\_RX.dwg Saved By: cooperk



**SECTION D**  
 13  
 H=1:100  
 V=1:50  
 CONCRETE PAVEMENT STRUCTURE  
 STA 2+400.000 NM



**SECTION E**  
 17  
 H=1:100  
 V=1:50  
 CONCRETE PAVEMENT STRUCTURE  
 STA 0+950.000 KEN EM



**SECTION F**  
 18  
 H=1:100  
 V=1:50  
 CONCRETE PAVEMENT STRUCTURE  
 STA 1+150.000 KEN EM

LOCATION APPROVED UNDERGROUND STRUCTURES			
SUPR. U/G STRUCTURES	DATE	COMMITTEE	
NOTE: LOCATION OF UNDERGROUND STRUCTURES AS SHOWN ARE BASED ON THE BEST INFORMATION AVAILABLE. BUT NO GUARANTEE IS GIVEN THAT ALL EXISTING UTILITIES ARE SHOWN OR THAT THE GIVEN LOCATIONS ARE EXACT. CONFIRMATION OF EXISTENCE AND EXACT LOCATION OF ALL SERVICES MUST BE OBTAINED FROM THE INDIVIDUAL UTILITIES BEFORE PROCEEDING WITH CONSTRUCTION.			
0	ISSUED FOR CONSTRUCTION	08/08/27	KLC
	NO. REVISIONS	YYMM/DD	BY

UMA   AECOM			
© 2008 UMA ENGINEERING LTD. ALL RIGHTS RESERVED.			
DESIGNED BY	JGK/WRJ	CHECKED BY	RPB
DRAWN BY	KLC	APPROVED BY	BWB
HOR. SCALE	1:100	RELEASED FOR CONSTRUCTION	
VERT. SCALE	1:50	DATE	08/08/27

PROFESSIONAL'S SEAL  
 PROVINCE OF MANITOBA  
 J.G. KENNEDY  
 Member  
 22326  
 JUN 27 2008  
 REGISTERED PROFESSIONAL ENGINEER  
 CONSULTANT DRAWING NO.  
 0285-406-00\_01-CT3023\_RX.dwg

**THE CITY OF WINNIPEG**  
 PUBLIC WORKS DEPARTMENT  
 TRANSPORTATION ENGINEERING DIVISION  
 MCGILLIVRAY BOULEVARD  
 120m WEST OF KENASTON BOULEVARD  
 TO WAVERLEY STREET  
 WIDENING AND REHABILITATION  
 CROSS SECTIONS  
 D, E, & F

CITY DRAWING NUMBER	P-3294-31
SHEET	31 OF 44
DRAWING No.	REV
	31 0

**METRIC**  
 WHOLE NUMBERS INDICATE MILLIMETRES  
 DECIMALIZED NUMBERS INDICATE METRES  
 BID OPPORTUNITY NO. 466-2008

**APCGM**  
 Certificate of Authorization  
 UMA Engineering Ltd. (MB)  
 No. 256 Date: June 27/08