

- NOTES:**
1. ALL WORK AND MATERIALS TO BE IN ACCORDANCE WITH THE LATEST REVISION OF THE CITY OF WINNIPEG STANDARD CONSTRUCTION SPECIFICATIONS.
 2. ALL ROADWAY DIMENSIONS SHOWN ARE TO BACK OF CURB.
 3. ADD 200.00 TO ALL ELEVATIONS TO OBTAIN GEODETIC ELEVATION.
 4. FINISHED CURB HEIGHT TO BE 125 mm UNLESS OTHERWISE NOTED.
 5. CONCRETE REPAIRS SHOWN ARE ESTIMATED. ACTUAL LOCATIONS ARE TO BE FIELD DETERMINED.



METRIC
WHOLE NUMBERS INDICATE MILLIMETRES
DECIMALIZED NUMBERS INDICATE METRES

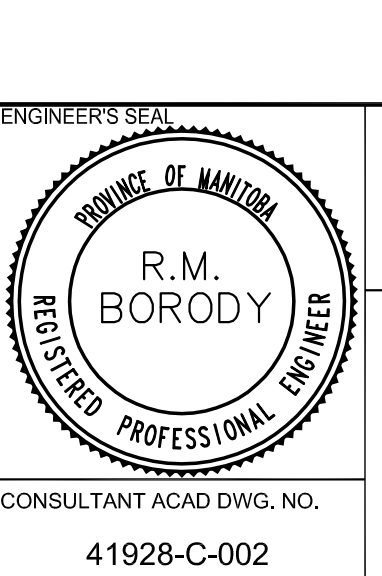
EXISTING	LEGEND-PLAN	PROPOSED	EXISTING	LEGEND-PLAN	PROPOSED	EXISTING	LEGEND-PROFILE	PROPOSED
---	WATERMAIN	---	---	HYDRO POLE	---	---	CENTRE LINE	---
---	HYDRANT	---	---	HYDRO POLE WITH LIGHT	---	---	WEST GUTTER	---
---	VALVE	---	---	PROPERTY LINE	---	---	EAST GUTTER	---
---	LAND DRAINAGE SEWER	---	---	MODIFIED BARRIER CURB	---	---	WEST PROP. LINE	---
---	WASTE WATER SEWER	---	---	BARRIER CURB	---	---	EAST PROP. LINE	---
---	MANHOLE	---	---	EDGE OF ASPHALT ROADWAY	---	---		---
---	CATCH BASIN	---	---	SIDEWALK RAMP	---	---		---
---	SIGNAL PIT	---	---	ROAD ELEVATION	---	---		---
---	UTILITIES ADJUSTED	---	---	CONC. SIDEWALK	---	---		---
---	GAS	---	---	ASPHALT PAVEMENT	---	---		---
---	M.T.S.	---	---	CONCRETE REPAIRS	---	---		---

EXISTING	LEGEND-PLAN	PROPOSED	EXISTING	LEGEND-PROFILE	PROPOSED
---	WATERMAIN	---	---	CENTRE LINE	---
---	HYDRANT	---	---	WEST GUTTER	---
---	VALVE	---	---	EAST GUTTER	---
---	LAND DRAINAGE SEWER	---	---	WEST PROP. LINE	---
---	WASTE WATER SEWER	---	---	EAST PROP. LINE	---
---	MANHOLE	---	---		---
---	CATCH BASIN	---	---		---
---	SIGNAL PIT	---	---		---
---	UTILITIES ADJUSTED	---	---		---
---	GAS	---	---		---
---	M.T.S.	---	---		---

LOCATIONS APPROVED	
UNDERGROUND STRUCTURES	SIGNED BY:
SURV. U/G STRUCTURES	DATE

G.B.M. CWBM 38-013	
ELEV. 234.854	
W. SIDE ST. JAMES ST. 517M SASKATCHEWAN AVE. & WELLINGTON AVE. TBLT. IN E. CONC. FOUNDATION NO. 1300 ST. JAMES ST. 1.3m S. & 0.4m BELOW CONC. BLOCK OF N.E. COR. OF BLDG.	

DESIGNED BY		CHECKED BY	
DRAWN BY		APPROVED BY	
HOR. SCALE 1:250		RELEASED FOR CONSTRUCTION	
VERTICAL 1:10		DATE	



ENGINEER'S SEAL
CONSULTANT ACAD DWG. NO. 41928-C-002

Winnipeg
CITY OF WINNIPEG
PUBLIC WORKS DEPARTMENT
TRANSPORTATION ENGINEERING DIVISION

ST. JAMES STREET
WELLINGTON AVENUE TO SASKATCHEWAN AVENUE

P-3288-02

PAVEMENT REHABILITATION
STA. 1+90.00 - STA. 3+60.00

SHEET 2 OF 4

Mar 04, 2008 - 11:02am
 P:\V1928 - 41928\41928 - Regional Street Rehabilitation - St. James Street\Urban\MMW DWG\41928-C-001-C-004-fab28.dwg - tab:002