

- NOTES:**
1. ALL WORK AND MATERIALS TO BE IN ACCORDANCE WITH THE LATEST REVISION OF THE CITY OF WINNIPEG STANDARD CONSTRUCTION SPECIFICATIONS.
 2. ALL ROADWAY DIMENSIONS SHOWN ARE TO BACK OF CURB.
 3. ADD 200.00 TO ALL ELEVATIONS TO OBTAIN GEODETIC ELEVATION.
 4. FINISHED CURB HEIGHT TO BE 125 mm UNLESS OTHERWISE NOTED.
 5. CONCRETE REPAIRS SHOWN ARE ESTIMATED. ACTUAL LOCATIONS ARE TO BE FIELD DETERMINED.



METRIC
WHOLE NUMBERS INDICATE MILLIMETRES
DECIMALIZED NUMBERS INDICATE METRES

NOTE:
These design documents are prepared solely for the use by the party with whom the design professional has entered into a contract and there are no representations of any kind made by the design professional to any party with whom the design professional has not entered into a contract.

EXISTING	LEGEND-PLAN	PROPOSED	EXISTING	LEGEND-PLAN	PROPOSED	EXISTING	LEGEND-PROFILE	PROPOSED
—	WATERMAIN	—	—	HYDRO POLE	—	—	CENTRE LINE	—
—	HYDRANT	—	—	HYDRO POLE WITH LIGHT	—	—	WEST GUTTER	—
—	VALVE	—	—	PROPERTY LINE	—	—	EAST GUTTER	—
—	LAND DRAINAGE SEWER	—	—	MODIFIED BARRIER CURB	—	—	WEST PROP. LINE	—
—	WASTE WATER SEWER	—	—	BARRIER CURB	—	—	EAST PROP. LINE	—
—	MANHOLE	—	—	EDGE OF ASPHALT ROADWAY	—	—		—
—	CATCH BASIN	—	—	SIDEWALK RAMP	—	—		—
—	SIGNAL PIT	—	—	ROAD ELEVATION	—	—		—
—	UTILITIES ADJUSTED	—	—	CONC. SIDEWALK	—	—		—
—	GAS	—	—	ASPHALT PAVEMENT	—	—		—
—	M.T.S.	—	—	CONCRETE REPAIRS	—	—		—

LOCATIONS APPROVED

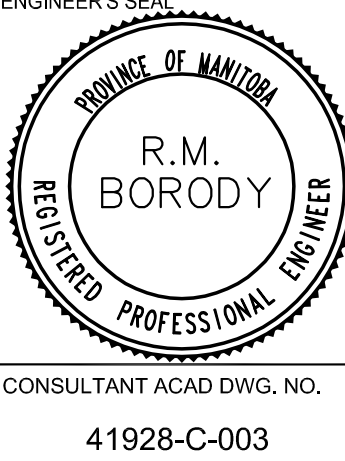
NO.	REVISIONS	DATE	BY
2	REVISIONS FROM CITY REVIEW	02.01.08	RMB
1	UNDERGROUND REVIEW	01.11.08	RMB

G.B.M. CWBM 38-013
ELEV. 234.854

W. SIDE ST. JAMES ST. 517M SASKATCHEWAN AVE. & WILKINSON AVE. TBLT. IN E. CONC. FOUNDATION No. 1300
ST. JAMES ST. 1.3m S. 4.0m BELOW CONC. BLOCK OF N.E. COR. OF BLDG.

MMM GROUP

DESIGNED BY: KG
DRAWN BY: KT
CHECKED BY: RMB
APPROVED BY: RMB
HOR. SCALE 1:250
VERTICAL 1:10
RELEASED FOR CONSTRUCTION
DATE: 11.19.2007



CITY OF WINNIPEG
PUBLIC WORKS DEPARTMENT
TRANSPORTATION ENGINEERING DIVISION

ST. JAMES STREET
WELLINGTON AVENUE TO SASKATCHEWAN AVENUE

P-3288-03

PAVEMENT REHABILITATION
STA. 3+60.00 - STA. 5+30.00

ENGINEER'S SEAL
CONSULTANT ACAD DWG. NO. 41928-C-003

SHEET 3 OF 4

Mar 04, 2008 - 11:07am
P:\V1928 - 41928\41928 - Regional Street Rehabilitation - St. James Street\Drawings\MMW\DWG\41928-C-001-C-004-fab28.dwg - tab:003