

- NOTES:
1. ALL WORK AND MATERIALS TO BE IN ACCORDANCE WITH THE LATEST REVISION OF THE CITY OF WINNIPEG STANDARD CONSTRUCTION SPECIFICATIONS.
 2. ALL ROADWAY DIMENSIONS SHOWN ARE TO BACK OF CURB.
 3. ADD 200.00 TO ALL ELEVATIONS TO OBTAIN GEODETIC ELEVATION.
 4. FINISHED CURB HEIGHT TO BE 125 mm UNLESS OTHERWISE NOTED.
 5. CONCRETE REPAIRS SHOWN ARE ESTIMATED. ACTUAL LOCATIONS ARE TO BE FIELD DETERMINED.



METRIC
WHOLE NUMBERS INDICATE MILLIMETRES
DECIMALIZED NUMBERS INDICATE METRES

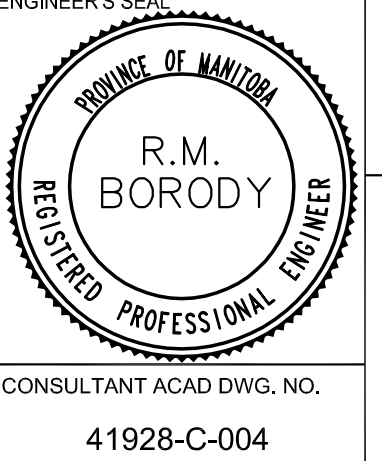
NOTE:
These design documents are prepared solely for the use by the party with whom the design professional has entered into a contract and there are no representations of any kind made by the design professional to any party with whom the design professional has not entered into a contract.

| EXISTING | LEGEND-PLAN | PROPOSED | EXISTING | LEGEND-PLAN | PROPOSED | EXISTING | LEGEND-PROFILE | PROPOSED |
|----------|---------------------|----------|----------|-------------------------|----------|----------|-----------------|----------|
| --- | WATERMAIN | --- | --- | HYDRO POLE | --- | --- | CENTRE LINE | --- |
| --- | HYDRANT | --- | --- | HYDRO POLE WITH LIGHT | --- | --- | WEST GUTTER | --- |
| --- | VALVE | --- | --- | PROPERTY LINE | --- | --- | EAST GUTTER | --- |
| --- | LAND DRAINAGE SEWER | --- | --- | MODIFIED BARRIER CURB | --- | --- | WEST PROP. LINE | --- |
| --- | WASTE WATER SEWER | --- | --- | BARRIER CURB | --- | --- | EAST PROP. LINE | --- |
| --- | MANHOLE | --- | --- | EDGE OF ASPHALT ROADWAY | --- | --- | | --- |
| --- | CATCH BASIN | --- | --- | SIDEWALK RAMP | --- | --- | | --- |
| --- | SIGNAL PIT | --- | --- | ROAD ELEVATION | --- | --- | | --- |
| --- | UTILITIES ADJUSTED | --- | --- | CONC. SIDEWALK | --- | --- | | --- |
| --- | GAS | --- | --- | ASPHALT PAVEMENT | --- | --- | | --- |
| --- | M.T.S. | --- | --- | CONCRETE REPAIRS | --- | --- | | --- |

| LOCATIONS APPROVED | DATE | BY |
|--------------------|------|----|
| | | |
| | | |
| | | |

| NO. | REVISIONS FROM CITY REVIEW | DATE | BY |
|-----|----------------------------|----------|-----|
| 1 | UNDERGROUND REVIEW | 01.11.08 | RMB |
| 2 | REVISIONS FROM CITY REVIEW | 02.01.08 | RMB |

| DESIGNED BY | CHECKED BY |
|-------------|-------------|
| KG | RMB |
| DRAWN BY | APPROVED BY |
| KT | RMB |
| DATE | DATE |
| 11.19.2007 | - |



ENGINEER'S SEAL
R.M. BORODY
CONSULTANT ACAD DWG. NO. 41928-C-004

CITY OF WINNIPEG
PUBLIC WORKS DEPARTMENT
TRANSPORTATION ENGINEERING DIVISION

ST. JAMES STREET
WELLINGTON AVENUE TO SASKATCHEWAN AVENUE

PAVEMENT REHABILITATION
STA. 5+30.00 TO SASKATCHEWAN AVENUE

P-3288-04
SHEET 4 OF 4

Mar 04, 2008 - 11:10am
 P:\V1928 - 41928\41928 - Regional Street Rehabilitation - St. James Street\Drawings\MMW DWG\41928-C-004-C-004-fuz28.dwg - tab:04