

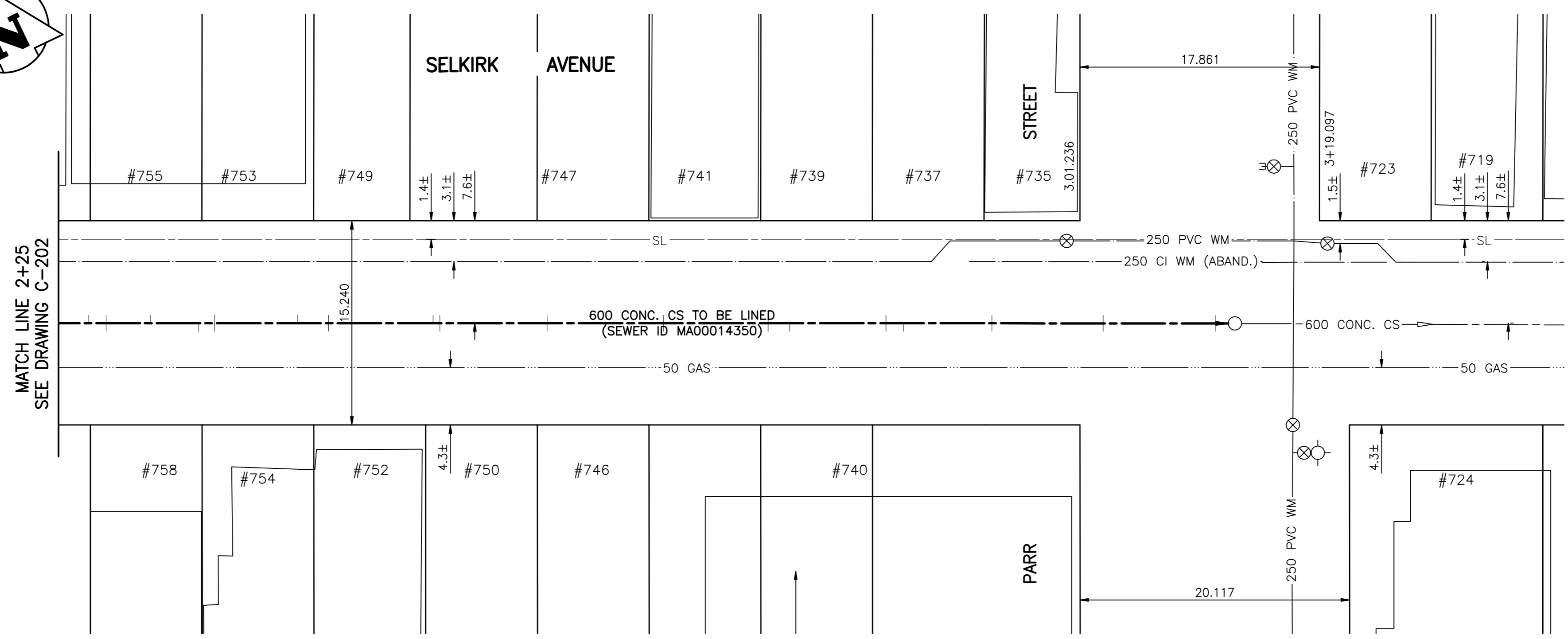
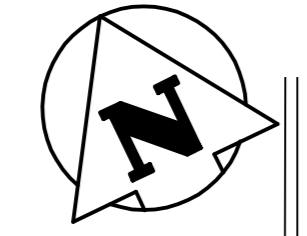
SEWER JUNCTION INFORMATION FOR SEWER ID MA00014350
REFERENCE—METERS EAST OF MANHOLE MH00012786

DIST. FROM REF. MANHOLE	JUNCTION DIA.	CLOCK REF.	SERVICE TYPE	DESCRIPTION
7.9	150	01	CN	LIVE
7.9	150	11	CN	
15.1	150	09	CX	ADJ HOLE
16.4	150	11	CN	CAPPED
16.4	150	02	CN	CAPPED
19.7	150	12	CNI	
23.3	150	02	CN	CRACKED
24.5	150	10	CN	
24.5	150	02	CN	
32.1	150	10	CN	
33.0	150	10	CN	
33.0	150	02	CN	LIVE
40.8	150	10	CX	BROKEN, FRACTURED
41.3	150	01	CN	LIVE
41.3	150	11	CN	CAPPED
49.3	150	01	CN	LIVE
49.3	150	11	CN	LIVE
58.0	150	01	CN	
58.0	150	11	CN	
65.8	150	11	CN	
65.8	150	01	CN	
67.4	150	02	CX	ADJ HOLE, CRACKED
74.6	150	11	CN	
74.6	150	02	CN	
75.9	150	01	CN	LIVE
82.5	150	11	CN	
82.5	150	01	CN	W EH
90.8	150	10	CN	
90.8	150	02	CN	CAPPED
99.2	150	01	CN	W EH
99.2	150	11	CN	

ALL JUNCTION INFORMATION BASED ON CCTV INSPECTION

SEWER SERVICE INFORMATION

ADDRESS	SIZE	PROPERTY LINE LOCATION
758 SELKIRK AVE RESIDENTIAL	150	NO INFO AVAILABLE
755 SELKIRK AVE RESIDENTIAL	NO INFO AVAILABLE	5.8m/7.9m EWLL
754 SELKIRK AVE RESIDENTIAL	150	1.5m WELL
753 SELKIRK AVE BUSINESS	150	1.5m WELL
752 SELKIRK AVE RESIDENTIAL	150	7.6m EWLL
750 SELKIRK AVE RESIDENTIAL	150	NO INFO AVAILABLE
749 SELKIRK AVE RESIDENTIAL	150	NO INFO AVAILABLE
747 SELKIRK AVE RESIDENTIAL	150	NO INFO AVAILABLE
746 SELKIRK AVE RESIDENTIAL	150	1.4m WELL
741 SELKIRK AVE RESIDENTIAL	150	1.5m WELL
740 SELKIRK AVE APPARTMENTS (8)	150	8.5m EWLL
739 SELKIRK AVE RESIDENTIAL	150	3.5m WELL
737 SELKIRK AVE RESIDENTIAL	150	NO INFO AVAILABLE
735 SELKIRK AVE RESIDENTIAL	150	0.9m WELL
724 SELKIRK AVE BUSINESS	150	4.9m EWLL
723 SELKIRK AVE RESIDENTIAL	150	0.6m WELL
719 SELKIRK AVE RESIDENTIAL	150	NO INFO AVAILABLE



WARNING

IF POWER EQUIPMENT OR EXPLOSIVES ARE TO BE USED FOR EXCAVATION ON THIS PROJECT THE CONTRACTOR MUST:
 1) NOTIFY THE GAS COMPANY OF THE PROPOSED LOCATION OF EXCAVATION.
 2) TAKE PRECAUTION TO AVOID DAMAGE TO GAS COMPANY INSTALLATIONS.
 SEE PROVINCIAL REGULATION 140/92 FOR DETAILS

METRIC

WHOLE NUMBERS INDICATE MILLIMETRES
DECIMALIZED NUMBERS INDICATE METRES

NOTE: STATIONS ALONG W P OF SELKIRK AVE.

BENCH MARK: N.W. cor. Arlington St. & Selkirk Ave., 1.01m in S. conc. foundation of King Edward Community School, 0.5m W. & 0.1m below tyndall stone of the most S. Ely. cor. of School.

BID OPPORTUNITY 471-2008



EXISTING	LEGEND-PLAN	PROPOSED	EXISTING	LEGEND-PLAN	PROPOSED	EXISTING	LEGEND-PROFILE	PROPOSED
150 WM	WATERMAIN	150 WM	HYDRO	M.T.S.	150 WM	WATERMAIN	HYDRANT, VALVE	150 WM
300 LDS	LAND DRAINAGE SEWER	300 LDS	CONCRETE	LAND DRAINAGE SEWER	300 LDS	LAND DRAINAGE SEWER	WASTE WATER SEWER	300 LDS
250 WWS	WASTE WATER SEWER	250 WWS	ASPHALT	WASTE WATER SEWER	250 WWS	WASTE WATER SEWER	WASTE WATER SEWER	250 WWS
MANHOLE	MANHOLE	MANHOLE	SIDEWALK	PROPERTY LINE	PROPERTY LINE	PROPERTY LINE	NORTH OR WEST GUTTER	PROPERTY LINE
CATCH BASIN	CATCH BASIN	CATCH BASIN	SURVEY BAR	SURVEY BAR	SURVEY BAR	SURVEY BAR	SOUTH OR EAST GUTTER	SURVEY BAR
CURB INLET	CURB INLET	CURB INLET	DITCH	DITCH	DITCH	DITCH	NORTH OR WEST P	DITCH
JUNCTIONS	JUNCTIONS	JUNCTIONS	CURB STOP	CURB STOP	CURB STOP	CURB STOP	SOUTH OR EAST P	CURB STOP
CULVERT	CULVERT	CULVERT	TREE	TREE	TREE	TREE	NORTH OR WEST DITCH	TREE
GAS	GAS	GAS	FENCE	FENCE	FENCE	FENCE	SOUTH OR EAST DITCH	FENCE

LOCATION APPROVED UNDERGROUND STRUCTURES
 SUPV. U/G STRUCTURES DATE COMMITTEE
 NOTE: LOCATION OF UNDERGROUND STRUCTURES AS SHOWN ARE BASED ON THE BEST INFORMATION AVAILABLE BUT NO GUARANTEE IS GIVEN THAT THE GIVEN LOCATIONS ARE EXACT. CONFIRMATION OF EXISTENCE AND EXACT LOCATION OF ALL SERVICES MUST BE OBTAINED FROM THE INDIVIDUAL UTILITIES BEFORE PROCEEDING WITH CONSTRUCTION.

NO.	REVISIONS	DATE	BY

Stantec Consulting Ltd.
 905 Waverley Street, Winnipeg, Manitoba
 Tel 204-489-5900 Fax 204-453-9012

DESIGNED BY: J.K.H. CHECKED BY: H.A.K.
 DRAWN BY: W.B.G. APPROVED BY: H.A.K.

HOR. SCALE: 1:250
 VERTICAL: 1:50

RELEASED FOR CONSTRUCTION: ORIGINAL SIGNED BY K. ZUREK
 DATE: 08.07.07

ENGINEER'S SEAL
ORIGINAL SEALED BY
 H.A. KATZ
 P. ENG.
 08.06.28

THE CITY OF WINNIPEG
 WATER AND WASTE DEPARTMENT
 ENGINEERING DIVISION

SELKIRK AVENUE
 2008 COMBINED SEWER RENEWALS
 BY CIPP LINING - CONTRACT 18
 1ST MH EAST OF ARLINGTON ST TO
 MH AT PARR ST
 STA. 2+25 TO STA. 3+10

SHEET 3 OF 6
 CAD FILE DRAWING NUMBER 10410c-204-702.dwg
 CITY DRAWING NUMBER 08532