

ADDRESS & NATURE OF SERVICE	SIZE	SHORT & LONG MEASUREMENT	REMARKS
314 Harold Avenue Residential	34 Copper	6.0 WEL OF HOUSE 10.2 FROM HSE FRONT	SWR JCT-53 E FROM 1ST MH OFF WABASHA WM RENEWAL OCT/84
316 Harold Avenue Residential	34 Copper	6.4 WEL OF HOUSE 8.2 FROM HSE FRONT	WM RENEWAL OCT/84
318 Harold Avenue Residential	34 Copper	6.1 WEL OF HOUSE 8.8 FROM HOUSE FRONT	SWR JCT-105 E FROM 1ST M.H.OFF WABASHA WM RENEWAL OCT/84
320 Harold Avenue Residential	34 Copper	0.91 W/W HSE LINE 5.2 FROM HSE FRONT	WM RENEWAL OCT/84
321 Harold Avenue Residential	34 Copper	5.1 WEL OF HOUSE 9.5 FROM HSE FRONT	SWR JCT-45 E FROM 1ST MH OFF WABASHA WM RENEWAL OCT/84
322 Harold Avenue Residential	34 Copper	5.5 E/W HSE LINE 8.8 OUT	SWR JCT-153 E FROM 1ST M.H.OFF WABASHA WM RENEWAL OCT/84
322 Harold Avenue Residential	34 Copper	4.6 WEL OF HOUSE 8.1 FROM HSE FRONT	WM RENEWAL OCT/84
325 Harold Avenue Residential	34 Copper	3.5 WEL OF HOUSE 7.6 FROM HSE FRONT	SWR JCT-109 E FROM 1ST MH OFF WABASHA WM RENEWAL DEC/94
326 Harold Avenue Residential	34 Copper	5.5 WEL OF HOUSE 8.2 FROM HSE FRONT	SWR JCT-225 E FROM 1ST M.H.OFF WABASHA WM RENEWAL DEC/94
326 Harold Avenue Residential	34 Copper	1.2 WHL OF HOUSE	
328 Harold Avenue Residential	34 Copper	1.6 EHL OF HOUSE 7.9 FROM HSE FRONT	
330 Harold Avenue Residential	34 Copper	7.3 E/WL OF HOUSE 8.4 FROM HSE FRONT	SWR JCT-225 E FROM 1ST M.H.OFF WABASHA WM RENEWAL DEC/94
332 Harold Avenue Residential	34 Copper	3.7 WEL OF HOUSE 4.5 FROM HSE FRONT	
334 Harold Avenue Residential	34 Copper	6.7 E/WL OF HOUSE 7.8 FROM HSE FRONT	SWR JCT-303 E FROM 1ST M.H.OFF WABASHA WM RENEWAL DEC/94
334 Harold Avenue Residential	34 Copper	1.2 WEL OF HOUSE 7.9 FROM HSE FRONT	
336 Harold Avenue Residential	34 Copper	3.4 WEL OF HOUSE 7.0 FROM HSE FRONT	

EXISTING	LEGEND - PLAN	PROPOSED	EXISTING	LEGEND - PLAN	PROPOSED	EXISTING	LEGEND - PROFILE	PROPOSED
—	WATERMAIN	—	—	REDUCER	—	—	150mm W.M.	—
—	HYDRANT VALVE	—	—	TRAFFIC SIGNAL	—	—	300mm L.D.S.	—
—	LAND DRAINAGE SEWER	—	—	GAS	—	—	250mm W.W.S.	—
—	WASTE WATER SEWER	—	—	HYDRO	—	—	250mm W.W.S.	—
○	MANHOLE	●	—	M.T.S.	—	—		—
□	CATCH BASIN	■	—	SURVEY BAR	—	—		—
□	CURB INLET	▲	—	CURB STOP	—	—		—
—	TEE	—	—	C.B. LEAD	—	—		—
—	BEND	—	—	TREE	—	—		—
—	ANODE	—	—	LAMP STANDARD	—	—		—

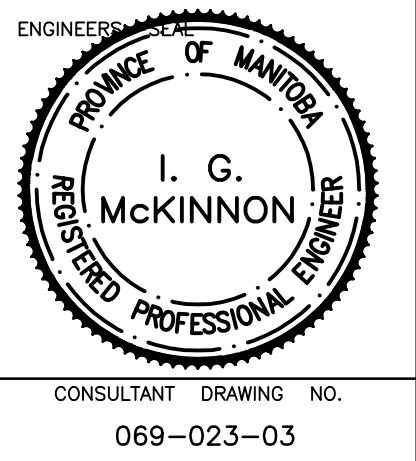
NO.	REVISIONS	DATE	BY
1	BID OPPORTUNITY 478-2008	JUNE 08	DJ

**GENIVAR**  
200 TACHE AVENUE WINNIPEG, MANITOBA R2H 1A7  
PH: (204)-233-2113 FAX: (204)-233-2080

DESIGNED BY: DJ  
CHECKED BY: SM  
DRAWN BY: RH  
APPROVED BY: IMcK

HOR. SCALE: 1:250  
VERT. SCALE: 1:50

RELEASED FOR CONSTRUCTION: K. ZUREK P.ENG.  
ORIGINALLY SIGNED BY: P.ENG.  
DATE: JUNE 24 2008



**THE CITY OF WINNIPEG**  
WATER AND WASTE DEPARTMENT

2008 CAPITAL WORKS  
WATERMAIN RENEWALS  
HAROLD AVENUE EAST  
90 M EAST OF WABASHA STREET TO REGINA PLACE

SHEET 2 OF 2  
CITY DRAWING NO. D-11435

- NOTES:**
- ALL GATE VALVES ARE COUNTER-CLOCKWISE TO OPEN WITH A BLACK OPERATING NUT.
  - WATERMAIN TO BE INSTALLED BY TRENCHLESS METHODS.
  - BACKFILL IS CLASS 5 WITHIN BOULEVARD AND CLASS 3 WHEN WITHIN PAVEMENT/SIDEWALK OR WHEN WITHIN 1.0m OF PAVEMENT OR SIDEWALK.
  - WATER SERVICES ARE 19mm UNLESS OTHERWISE NOTED.
  - MINIMUM COVER TO TOP OF WATERMAIN SHALL BE 2.4m.
  - LOCATION OF ALL SERVICES TO BE CONFIRMED IN FIELD.
  - EXPOSE EXISTING WATERMAIN TO CONFIRM DEPTH PRIOR TO CONSTRUCTION.
  - ALL LEAD SERVICES TO BE RENEWED TO PROPERTY LINE.
  - SERVICES TO BE RENEWED SHALL BE REPLACED FROM WATERMAIN TO PROPERTY LINE. ALL OTHERS TO BE RECONNECTED.

