

WATER SERVICE INFORMATION		
ADDRESS & NATURE OF SERVICE	SIZE TYPE (Street)	SHORT & LONG MEASUREMENT
700 Hoskin Avenue Residential	34 Copper	4.1 W OF E CORNER OF HOUSE
701 Hoskin Avenue Residential	34 Copper	3.1 E OF W HOUSE CORNER
704 Hoskin Avenue Residential	34 Copper	6.3 W OF E HOUSE CORNER
706 Hoskin Avenue Residential	34 Copper	6.4 W E L OF HOUSE
707 Hoskin Avenue Residential	34 Copper	1.3 E OF W CORNER OF HOUSE
708 Hoskin Avenue Residential	34 Copper	2.9 E OF W CORNER OF HOUSE
710 Hoskin Avenue Residential	34 Copper	
711 Hoskin Avenue Residential	34 Copper	2.6 E OF W CORNER OF HOUSE
712 Hoskin Avenue Residential	34 Copper	2.7 E OF W CORNER OF HOUSE
716 Hoskin Avenue Residential	34 Copper	2.3 W OF E CORNER OF HOUSE
717 Hoskin Avenue Residential	34 Copper	2.3 E OF W CORNER OF HOUSE
720 Hoskin Avenue Residential	34 Copper	2.0 E OF W HOUSE CORNER
721 Hoskin Avenue Residential	34 Copper	1.4 E OF W CORNER OF HOUSE



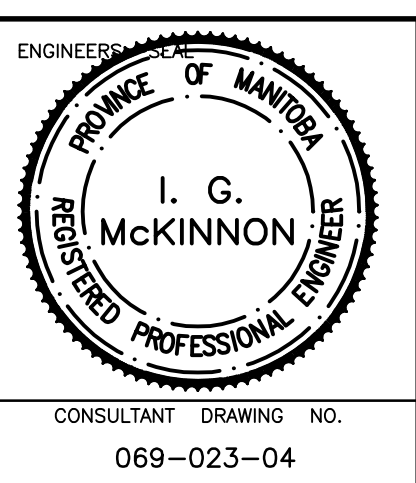
- NOTES:**
- ALL GATE VALVES ARE COUNTER-CLOCKWISE TO OPEN WITH A BLACK OPERATING NUT.
 - WATERMAIN TO BE INSTALLED BY TRENCHLESS METHODS.
 - BACKFILL IS CLASS 5 WITHIN BOULEVARD AND CLASS 3 WHEN WITHIN PAVEMENT/SIDEWALK OR WHEN WITHIN 1.0m OF PAVEMENT OR SIDEWALK.
 - WATER SERVICES ARE 19mm UNLESS OTHERWISE NOTED.
 - MINIMUM COVER TO TOP OF WATERMAIN SHALL BE 2.4m.
 - LOCATION OF ALL SERVICES TO BE CONFIRMED IN FIELD.
 - EXPOSE EXISTING WATERMAIN TO CONFIRM DEPTH PRIOR TO CONSTRUCTION.
 - ALL LEAD SERVICES TO BE RENEWED TO PROPERTY LINE.
 - SERVICES TO BE RENEWED SHALL BE REPLACED FROM WATERMAIN TO PROPERTY LINE. ALL OTHERS TO BE RECONNECTED.

EXISTING	LEGEND - PLAN	PROPOSED	EXISTING	LEGEND - PLAN	PROPOSED	EXISTING	LEGEND - PROFILE	PROPOSED
	WATERMAIN			REDUCER			WATERMAIN	
	HYDRANT			PLUG			LAND DRAINAGE SEWER	
	VALVE			TRAFFIC SIGNAL			WASTE WATER SEWER	
	LAND DRAINAGE SEWER			GAS			JUNCTIONS	
	WASTE WATER SEWER			M.T.S.			CULVERT	
	MANHOLE			SURVEY BAR				
	CATCH BASIN			CURB STOP				
	CURB INLET			C.B. LEAD				
	TEE			TREE				
	BEND			LAMP STANDARD				
	ANODE							

LOCATION APPROVED		B.M. ELEV.	
28-051	230.553		
NO.	REVISIONS	DATE	BY
1	BID OPPORTUNITY 478-2008	JUNE 08	DJ

GENIVAR
 200 TACHE AVENUE WINNIPEG, MANITOBA R2H 1A7
 PH: (204)-233-2113 FAX: (204)-233-2080

DESIGNED BY: DJ
 CHECKED BY: SM
 DRAWN BY: DJ
 APPROVED BY: IMcK
 HOR. SCALE: 1:250
 VERT. SCALE: 1:50
 RELEASED FOR CONSTRUCTION: K. ZUREK
 ORIGINALLY SIGNED BY: P.ENG.
 DATE: JUNE 08
 DATE: JUNE 24 2008



THE CITY OF WINNIPEG
 WATER AND WASTE DEPARTMENT

2008 CAPITAL WORKS
 WATERMAIN RENEWALS
 HOSKINS AVENUE
 GRAY STREET TO
 ROBIN HOOD CRESCENT

SHEET 1 OF 3
 CITY DRAWING NO.
D-11436

CONSULTANT DRAWING NO.
 069-023-04