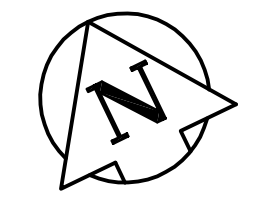
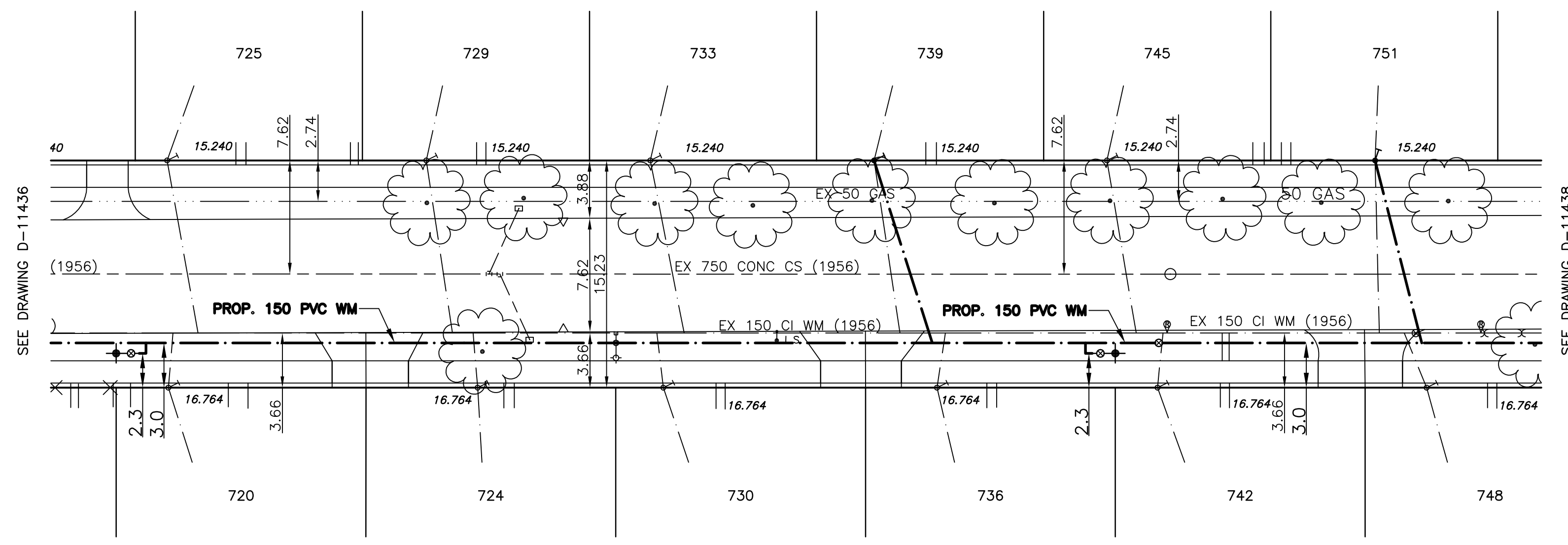


CHAINAGE ALONG SOUTH PROPERTY LINE OF HOSKINS AVENUE
HOSKINS AVENUE



WATER SERVICE INFORMATION		
ADDRESS & NATURE OF SERVICE	SIZE TYPE (Street)	SHORT & LONG MEASUREMENT
720 Hoskin Avenue Residential	34 Copper	2.0 E OF W CORNER
721 Hoskin Avenue Residential	34 Copper	1.4 E OF W CORNER OF HOUSE
724 Hoskin Avenue Residential	34 Copper	0.5 E OF W CORNER OF HOUSE
725 Hoskin Avenue Residential	34 Copper	1.9 E OF W CORNER OF HOUSE
729 Hoskin Avenue Residential	34 Copper	1.5 E OF W CORNER OF HOUSE
730 Hoskin Avenue Residential	34 Copper	1.5 E OF W CORNER OF HOUSE
733 Hoskin Avenue Residential	34 Copper	3.3 E OF W CORNER OF HOUSE
736 Hoskin Avenue Residential	34 Copper	1.9 E OF W CORNER OF HOUSE
739 Hoskin Avenue Residential	34 Copper	2.5 E OF W CORNER OF HOUSE
742 Hoskin Avenue Residential	34 Copper	1.1 E OF W CORNER OF HOUSE
745 Hoskin Avenue Residential	34 Copper	3.4 E OF W CORNER OF HOUSE
748 Hoskin Avenue Residential	34 Copper	0.2 E OF W CORNER OF HOUSE
751 Hoskin Avenue Residential	34 Copper	4.0 E W CORNER HOUSE



METRIC
WHOLE NUMBERS INDICATE MILLIMETRES
DECIMALIZED NUMBERS INDICATE METRES

- NOTES:**
- ALL GATE VALVES ARE COUNTER-CLOCKWISE TO OPEN WITH A BLACK OPERATING NUT.
 - WATERMAIN TO BE INSTALLED BY TRENCHLESS METHODS.
 - BACKFILL IS CLASS 5 WITHIN BOULEVARD AND CLASS 3 WHEN WITHIN PAVEMENT/SIDEWALK OR WHEN WITHIN 1.0m OF PAVEMENT OR SIDEWALK.
 - WATER SERVICES ARE 19mm UNLESS OTHERWISE NOTED.
 - MINIMUM COVER TO TOP OF WATERMAIN SHALL BE 2.4m.
 - LOCATION OF ALL SERVICES TO BE CONFIRMED IN FIELD.
 - EXPOSE EXISTING WATERMAIN TO CONFIRM DEPTH PRIOR TO CONSTRUCTION.
 - ALL LEAD SERVICES TO BE RENEWED TO PROPERTY LINE.
 - SERVICES TO BE RENEWED SHALL BE REPLACED FROM WATERMAIN TO PROPERTY LINE. ALL OTHERS TO BE RECONNECTED.

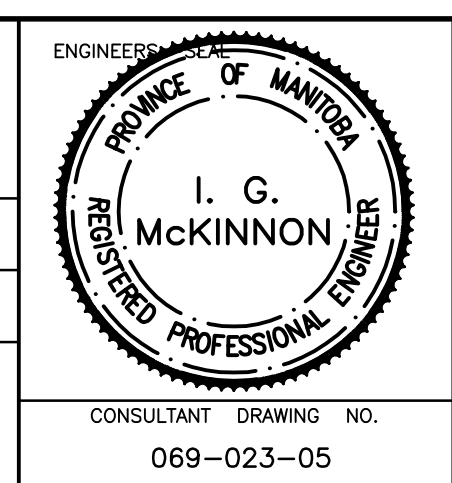
EXISTING	LEGEND - PLAN	PROPOSED	EXISTING	LEGEND - PLAN	PROPOSED	EXISTING	LEGEND - PROFILE	PROPOSED
	WATERMAIN			REDUCER			WATERMAIN	
	HYDRANT			PLUG			VALVE	
	VALVE			TRAFFIC SIGNAL			LAND DRAINAGE SEWER	
	LAND DRAINAGE SEWER			GAS			WASTE WATER SEWER	
	WASTE WATER SEWER			HYDRO			JUNCTIONS	
	MANHOLE			M.T.S.			CULVERT	
	CATCH BASIN			SURVEY BAR				
	CURB INLET			CURB STOP				
	TEE			C.B. LEAD				
	BEND			TREE				
	ANODE			LAMP STANDARD				

LOCATION APPROVED		DATE	
BY	DATE	BY	DATE

NOTE:
LOCATION OF UNDERGROUND STRUCTURES AS SHOWN ARE BASED ON THE BEST INFORMATION AVAILABLE BUT NO GUARANTEE IS GIVEN THAT ALL EXISTING UTILITIES ARE SHOWN OR THAT THE GIVEN LOCATIONS ARE EXACT. CONFIRMATION OF EXISTENCE AND EXACT LOCATION OF ALL SERVICES MUST BE OBTAINED FROM THE INDIVIDUAL UTILITIES BEFORE PROCEEDING WITH CONSTRUCTION.

GENIVAR
200 TACHE AVENUE WINNIPEG, MANITOBA R2H 1A7
PH: (204)-233-2113 FAX: (204)-233-2080

DESIGNED BY: DJ	CHECKED BY: SM
DRAWN BY: DJ	APPROVED BY: IMcK
HOR. SCALE: 1:250	RELEASED FOR CONSTRUCTION: K. ZUREK
VERT. SCALE: 1:50	ORIGINALLY SIGNED BY: P. ENG.
DATE: JUNE 08	DATE: JUNE 24 2008



THE CITY OF WINNIPEG
WATER AND WASTE DEPARTMENT

2008 CAPITAL WORKS
WATERMAIN RENEWALS
HOSKINS AVENUE
ROBIN HOOD CRESCENT TO
112M EAST OF ROBIN HOOD CRESCENT

SHEET 2 OF 3
CITY DRAWING NO. D-11437