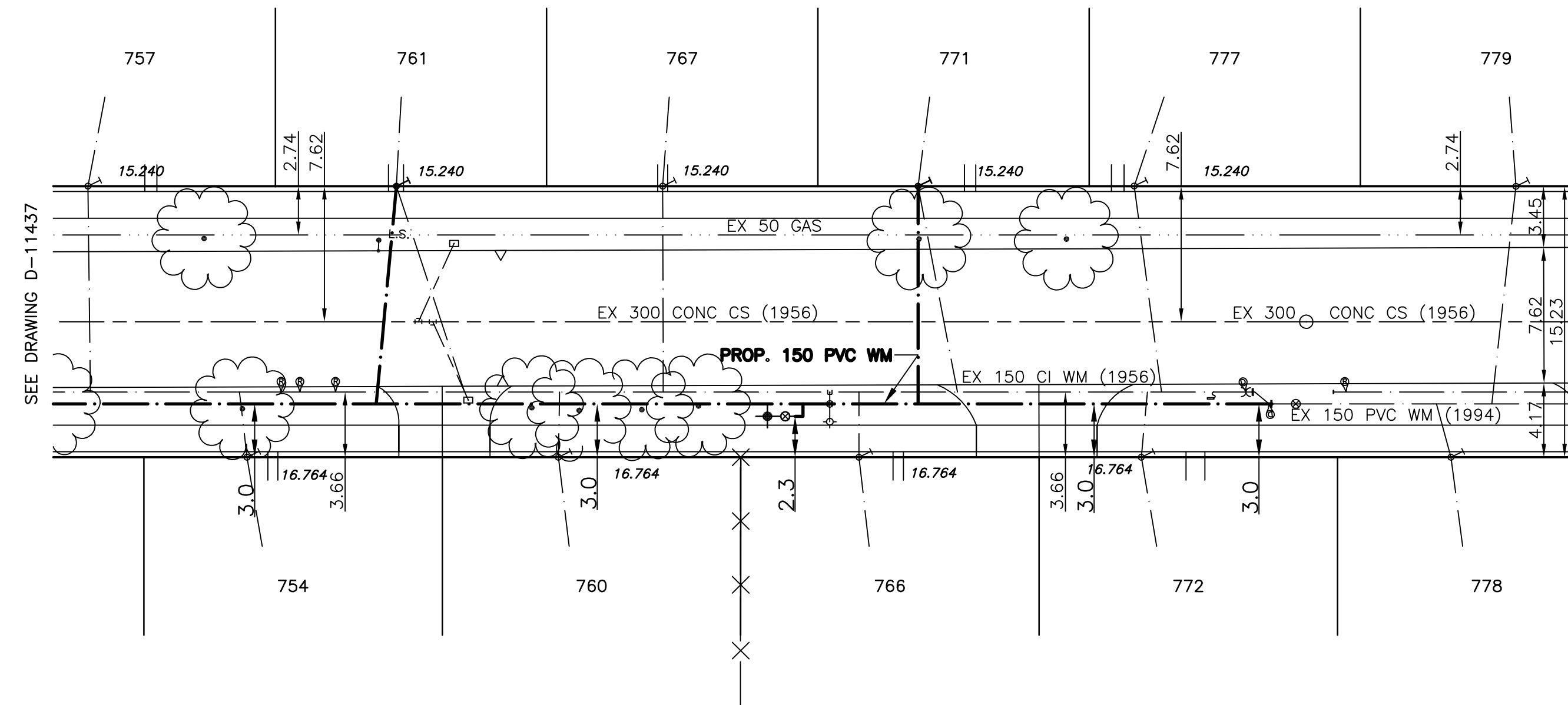
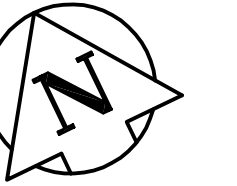


CHAINAGE ALONG SOUTH PROPERTY LINE OF HOSKINS AVENUE

HOSKINS AVENUE



ADDRESS & NATURE OF SERVICE	SIZE	TYPE (Street)	SHORT & LONG MEASUREMENT	REMARKS
754 Hoskin Avenue Residential	34	Copper	2.9 E W HOUSE CORNER	
757 Hoskin Avenue Residential	34	Copper	2.1 E OF W CORNER OF HOUSE	WATER/ON
760 Hoskin Avenue Residential	34	Copper	2.7 E OF W CORNER OF HOUSE	WATER/ON
761 Hoskin Avenue Residential	34	Copper	4.6 E OF W CORNER OF HOUSE	WATER/ON
766 Hoskin Avenue Residential	34	Copper	4.6 WL #766	95/11/28-3/4" COUPLING 1" S OF MAIN
767 Hoskin Avenue Residential	34	Copper	4.0 E OF W CORNER OF HOUSE	
771 Hoskin Avenue Residential	34	Copper	2.7 E W CORNER HOUSE	WATER/ON
772 Hoskin Avenue Residential	34	Copper	1.8 E W HOUSE CORNER	
777 Hoskin Avenue Residential	34	Copper	2.5 E OF W LOT LINE	
778 Hoskin Avenue Residential	34	Copper	3.4 E OF W HOUSE CORNER	CORP MEAS: 25.9' E OF VLVE OPP #772
778 Hoskin Avenue Residential	34	Copper	23.9 E OF HYDRANT	WATERMAIN RENEWAL
779 Hoskin Avenue Residential	34	Copper	6.1 E OF W CORNER OF HOUSE	CORP: 36.1' E OF VLVE OPP #772
779 Hoskin Avenue Residential	34	Copper	26.8 E OF HYDRANT	WATERMAIN RENEWAL



- NOTES:**
- ALL GATE VALVES ARE COUNTER-CLOCKWISE TO OPEN WITH A BLACK OPERATING NUT.
  - WATERMAIN TO BE INSTALLED BY TRENCHLESS METHODS.
  - BACKFILL IS CLASS 5 WITHIN BOULEVARD AND CLASS 3 WHEN WITHIN PAVEMENT/SIDEWALK OR WHEN WITHIN 1.0m OF PAVEMENT OR SIDEWALK.
  - WATER SERVICES ARE 19mm UNLESS OTHERWISE NOTED.
  - MINIMUM COVER TO TOP OF WATERMAIN SHALL BE 2.4m.
  - LOCATION OF ALL SERVICES TO BE CONFIRMED IN FIELD.
  - EXPOSE EXISTING WATERMAIN TO CONFIRM DEPTH PRIOR TO CONSTRUCTION.
  - ALL LEAD SERVICES TO BE RENEWED TO PROPERTY LINE.
  - SERVICES TO BE RENEWED SHALL BE REPLACED FROM WATERMAIN TO PROPERTY LINE. ALL OTHERS TO BE RECONNECTED.

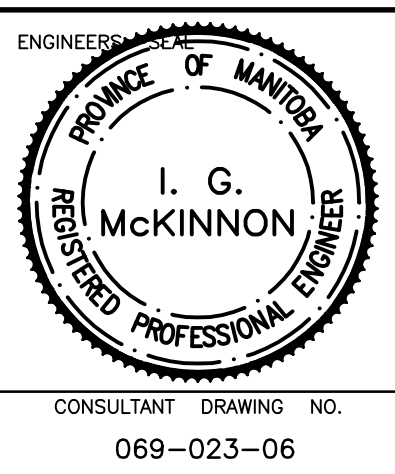
METRIC  
WHOLE NUMBERS INDICATE MILLIMETRES  
DECIMALIZED NUMBERS INDICATE METRES

EXISTING	LEGEND - PLAN	PROPOSED	EXISTING	LEGEND - PLAN	PROPOSED	EXISTING	LEGEND - PROFILE	PROPOSED
	WATERMAIN			REDUCER			WATERMAIN	
	HYDRANT			PLUG			WATERMAIN	
	VALVE			TRAFFIC SIGNAL			LAND DRAINAGE SEWER	
	LAND DRAINAGE SEWER			GAS			WASTE WATER SEWER	
	WASTE WATER SEWER			HYDRO			JUNCTIONS	
	MANHOLE			M.T.S.			CULVERT	
	CATCH BASIN			SURVEY BAR				
	CURB INLET			CURB STOP				
	TEE			C.B. LEAD				
	BEND			TREE				
	ANODE			LAMP STANDARD				

LOCATION APPROVED	SUPV. U/G STRUCTURES COMMITTEE	DATE
NOTE:	LOCATION OF UNDERGROUND STRUCTURES AS SHOWN ARE BASED ON THE BEST INFORMATION AVAILABLE BUT NO GUARANTEE IS GIVEN THAT ALL EXISTING UTILITIES ARE SHOWN OR THAT THE GIVEN LOCATIONS ARE EXACT. CONFIRMATION OF EXISTENCE AND EXACT LOCATION OF ALL SERVICES MUST BE OBTAINED FROM THE INDIVIDUAL UTILITIES BEFORE PROCEEDING WITH CONSTRUCTION.	
B.M. ELEV.	28-051	230.553
NO.	REVISIONS	DATE BY
1	BID OPPORTUNITY 478-2008	JUNE 08 DJ

**GENIVAR**  
200 TACHE AVENUE WINNIPEG, MANITOBA R2H 1A7  
PH: (204)-233-2113 FAX: (204)-233-2080

DESIGNED BY	DJ	CHECKED BY	SM
DRAWN BY	DJ	APPROVED BY	IMcK
HOR. SCALE:	1:250	RELEASED FOR CONSTRUCTION	ORIGINALLY SIGNED BY
VERT. SCALE:	1:50	K. ZUREK	P.ENG.
DATE	JUNE 08	DATE	JUNE 24 2008



THE CITY OF WINNIPEG  
WATER AND WASTE DEPARTMENT

2008 CAPITAL WORKS  
WATERMAIN RENEWALS  
HOSKINS AVENUE

112M EAST OF ROBIN HOOD CRESCENT TO  
180M EAST OF ROBIN HOOD CRESCENT

SHEET 3 OF 3  
CITY DRAWING NO.  
**D-11438**

CONSULTANT DRAWING NO.  
069-023-06