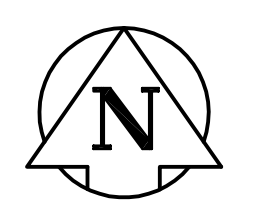
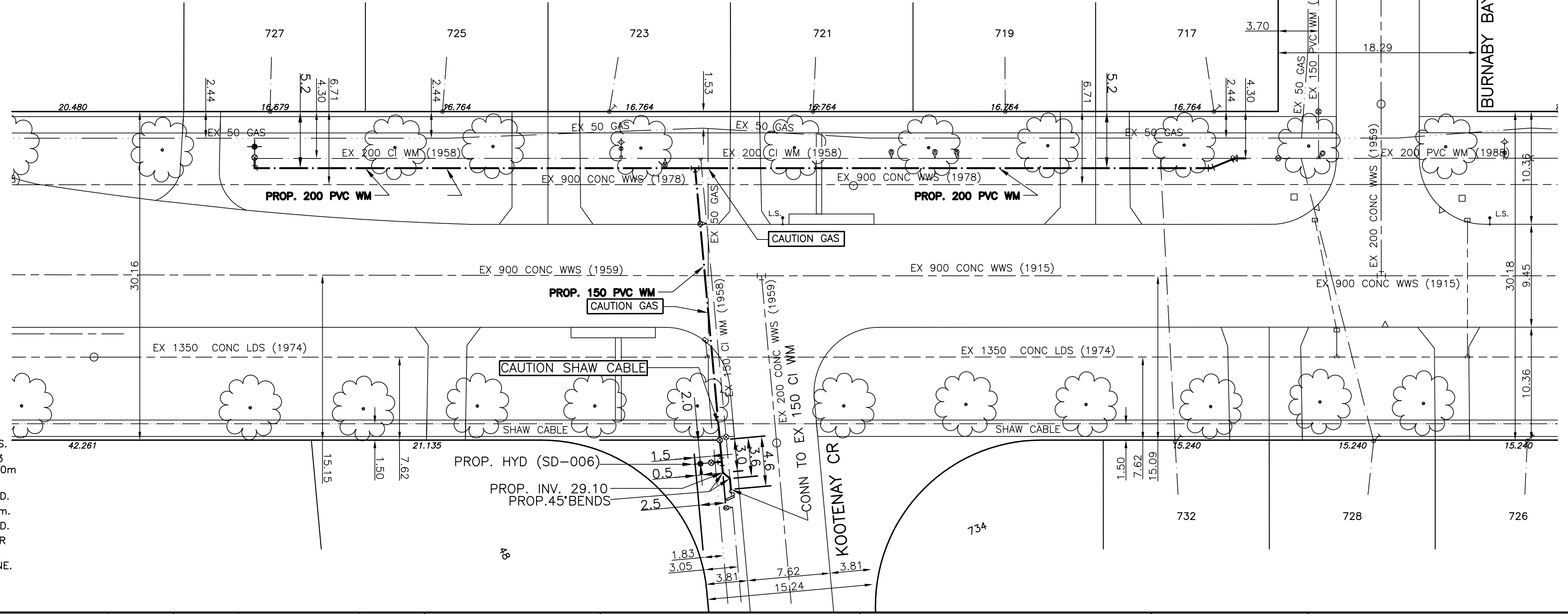


CHAINAGE ALONG NORTH PROPERTY LINE OF KILDARE AVENUE

KILDARE AVENUE WEST

WATER SERVICE INFORMATION			
ADDRESS & NATURE OF SERVICE	SIZE	SIZE TYPE	SHORT & LONG MEASUREMENT
717 Kildare Avenue Residential	34	Copper	3.3 WEL OF HOUSE 7.9 FROM HSE FRONT
719 Kildare Avenue Residential	34	Copper	6.7 W OF F H/L 9.1 FROM HSE FRONT
719 Kildare Avenue Residential	34	Copper	0.6 EEL OF HOUSE 9.3 FROM HSE FRONT
721 Kildare Avenue Residential	34	Copper	2.1 EWL OF HOUSE 9.9 FROM HSE FRONT
723 Kildare Avenue Residential	34	Copper	0.6 EWL OF HOUSE 11.2 FROM HSE FRONT
723 Kildare Avenue Residential	34	Copper	0.6 WEL OF HOUSE 8.4 FROM HSE FRONT
725 Kildare Avenue Residential	34	Copper	1.8 EWL OF HOUSE 7.9 FROM HSE FRONT
727 Kildare Avenue Residential	34	Copper	3.4 EWL OF HOUSE 9.0 FROM HSE FRONT
727 Kildare Avenue Residential	34	Copper	0.3 WEL OF HOUSE 9.1 FROM HSE FRONT
728 Kildare Avenue Residential	34	Copper	5.5 EWL OF HOUSE 9.5 FROM HSE FRONT
731 Kildare Avenue Residential	34	Copper	1.2 EEL OF HOUSE 8.9 FROM HSE FRONT
732 Kildare Avenue Residential	34	Copper	4.3 EWL OF HOUSE 9.24 FROM HSE FRONT
734 Kildare Avenue Residential	34	Copper	1.8 NSL OF HOUSE

- NOTES:**
- ALL GATE VALVES ARE TO BE CLOCKWISE TO OPEN WITH A RED OPERATING NUT.
 - WATERMAIN TO BE INSTALLED BY TRENCHLESS METHODS.
 - BACKFILL IS CLASS 5 WITHIN BOULEVARD AND CLASS 3 WHEN WITHIN PAVEMENT/SIDEWALK OR WHEN WITHIN 1.0m OF PAVEMENT OR SIDEWALK.
 - WATER SERVICES ARE 19mm UNLESS OTHERWISE NOTED.
 - MINIMUM COVER TO TOP OF WATERMAIN SHALL BE 2.4m.
 - LOCATION OF ALL SERVICES TO BE CONFIRMED IN FIELD.
 - EXPOSE EXISTING WATERMAIN TO CONFIRM DEPTH PRIOR TO CONSTRUCTION.
 - ALL LEAD SERVICES TO BE RENEWED TO PROPERTY LINE.
 - SERVICES TO BE RENEWED SHALL BE REPLACED FROM WATERMAIN TO PROPERTY LINE. ALL OTHERS TO BE RECONNECTED.



METRIC
WHOLE NUMBERS INDICATE MILLIMETRES
DECIMALIZED NUMBERS INDICATE METRES

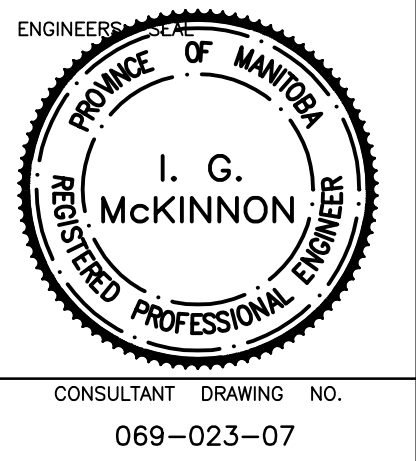
EXISTING	LEGEND - PLAN	PROPOSED	EXISTING	LEGEND - PLAN	PROPOSED	EXISTING	LEGEND - PROFILE	PROPOSED
---	WATERMAIN	---	---	REDUCER	---	---	150mm W.M.	---
---	HYDRANT	---	---	PLUG	---	---	VALVE	---
---	VALVE	---	---	TRAFFIC SIGNAL	---	---	LAND DRAINAGE SEWER	---
---	LAND DRAINAGE SEWER	---	---	GAS	---	---	WASTE WATER SEWER	---
---	WASTE WATER SEWER	---	---	HYDRO	---	---	JUNCTIONS	---
---	MANHOLE	---	---	M.T.S./ SHAW CABLE	---	---	CULVERT	---
---	CATCH BASIN	---	---	SURVEY BAR	---	---		---
---	CURB INLET	---	---	CURB STOP	---	---		---
---	TEE	---	---	C.B. LEAD	---	---		---
---	BEND	---	---	TREE	---	---		---
---	ANODE	---	---	LAMP STANDARD	---	---		---

LOCATION APPROVED		DATE	
BY	DATE	BY	DATE

NOTE:
LOCATION OF UNDERGROUND STRUCTURES AS SHOWN ARE BASED ON THE BEST INFORMATION AVAILABLE BUT NO GUARANTEE IS GIVEN THAT ALL EXISTING UTILITIES ARE SHOWN OR THAT THE GIVEN LOCATIONS ARE EXACT. CONFIRMATION OF EXISTENCE AND EXACT LOCATION OF ALL SERVICES MUST BE OBTAINED FROM THE INDIVIDUAL UTILITIES BEFORE PROCEEDING WITH CONSTRUCTION.

GENIVAR
200 TACHE AVENUE WINNIPEG, MANITOBA R2H 1A7
PH: (204) 233-2113 FAX: (204) 233-2080

DESIGNED BY: DJ
CHECKED BY: SM
DRAWN BY: DJ
APPROVED BY: IMcK
HOR. SCALE: 1:250
VERT. SCALE: 1:50
RELEASED FOR CONSTRUCTION: K. ZUREK
ORIGINALLY SIGNED BY: P.ENG.
DATE: MAY 08
DATE: JUNE 24 2008



THE CITY OF WINNIPEG
WATER AND WASTE DEPARTMENT

2008 CAPITAL WORKS
WATERMAIN RENEWALS
KILDARE AVENUE WEST
BURNABY BAY (WEST LEG) TO
PLESSIS ROAD

SHEET 1 OF 1
CITY DRAWING NO.
D-11439