

- NOTES:**
1. ALL GATE VALVES ARE COUNTER-CLOCKWISE TO OPEN WITH A BLACK OPERATING NUT.
  2. WATERMAIN TO BE INSTALLED BY TRENCHLESS METHODS.
  3. BACKFILL IS CLASS 5 WITHIN BOULEVARD AND CLASS 3 WHEN WITHIN PAVEMENT/SIDEWALK OR WHEN WITHIN 1.0m OF PAVEMENT OR SIDEWALK.
  4. WATER SERVICES ARE 19mm UNLESS OTHERWISE NOTED.
  5. MINIMUM COVER TO TOP OF WATERMAIN SHALL BE 2.4m.
  6. LOCATION OF ALL SERVICES TO BE CONFIRMED IN FIELD.
  7. EXPOSE EXISTING WATERMAIN TO CONFIRM DEPTH PRIOR TO CONSTRUCTION.
  8. ALL LEAD SERVICES TO BE RENEWED TO PROPERTY LINE.
  9. SERVICES TO BE RENEWED SHALL BE REPLACED FROM WATERMAIN TO PROPERTY LINE. ALL OTHERS TO BE RECONNECTED.

WATER SERVICE INFORMATION					
ADDRESS & NATURE OF SERVICE	SIZE (mm) & TYPE (Street)	SIZE (mm) & TYPE (PROPERTY)	SHORT & LONG MEASUREMENT	CORP LOCATION	REMARKS
81 Huntington Drive Residential	34 Copper		3.1 NSL OF HOUSE 7.8 FROM HSE FRONT		SEWER TEE OPPOSITE CS
30 Colonial Court Residential	34 Copper		4.6 WEL OF HOUSE 7.3 FROM HSE FRONT		SEWER TEE OPPOSITE CS

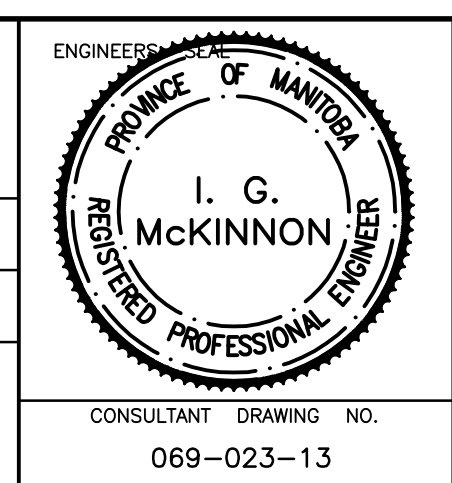
EXISTING	LEGEND - PLAN	PROPOSED	EXISTING	LEGEND - PLAN	PROPOSED	EXISTING	LEGEND - PROFILE	PROPOSED
	WATERMAIN			REDUCER			WATERMAIN	
	HYDRANT			PLUG			LAND DRAINAGE SEWER	
	VALVE			TRAFFIC SIGNAL			WASTE WATER SEWER	
	LAND DRAINAGE SEWER			GAS			JUNCTIONS	
	WASTE WATER SEWER			HYDRO			CULVERT	
	MANHOLE			M.T.S.				
	CATCH BASIN			SURVEY BAR				
	CURB INLET			CURB STOP				
	TEE			C.B. LEAD				
	BEND			TREE				
	ANODE			LAMP STANDARD				

LOCATION APPROVED		S.U.P.V. U/G STRUCTURES COMMITTEE	
NO.	REVISIONS	DATE	BY
1	BID OPPORTUNITY 478-2008	JUNE 08	DJ

METRIC  
WHOLE NUMBERS INDICATE MILLIMETRES  
DECIMALIZED NUMBERS INDICATE METRES

**GENIVAR**  
200 TACHE AVENUE WINNIPEG, MANITOBA R2H 1A7  
PH: (204)-233-2113 FAX: (204)-233-2080

DESIGNED BY: DJ	CHECKED BY: SM
DRAWN BY: DJ	APPROVED BY: IMcK
HOR. SCALE: 1:250	RELEASED FOR CONSTRUCTION: K. ZUREK
VERT. SCALE: 1:50	ORIGINALLY SIGNED BY: P.ENG.
DATE: MAY 08	DATE: JUNE 24 2008



THE CITY OF WINNIPEG  
WATER AND WASTE DEPARTMENT

2008 CAPITAL WORKS  
WATERMAIN RENEWALS  
PREMIERE PLACE

PRESIDENTS COURT TO  
ST. CLAIRE BOULEVARD

SHEET 1 OF 3  
CITY DRAWING NO.  
D-11444

CONSULTANT DRAWING NO. 069-023-13