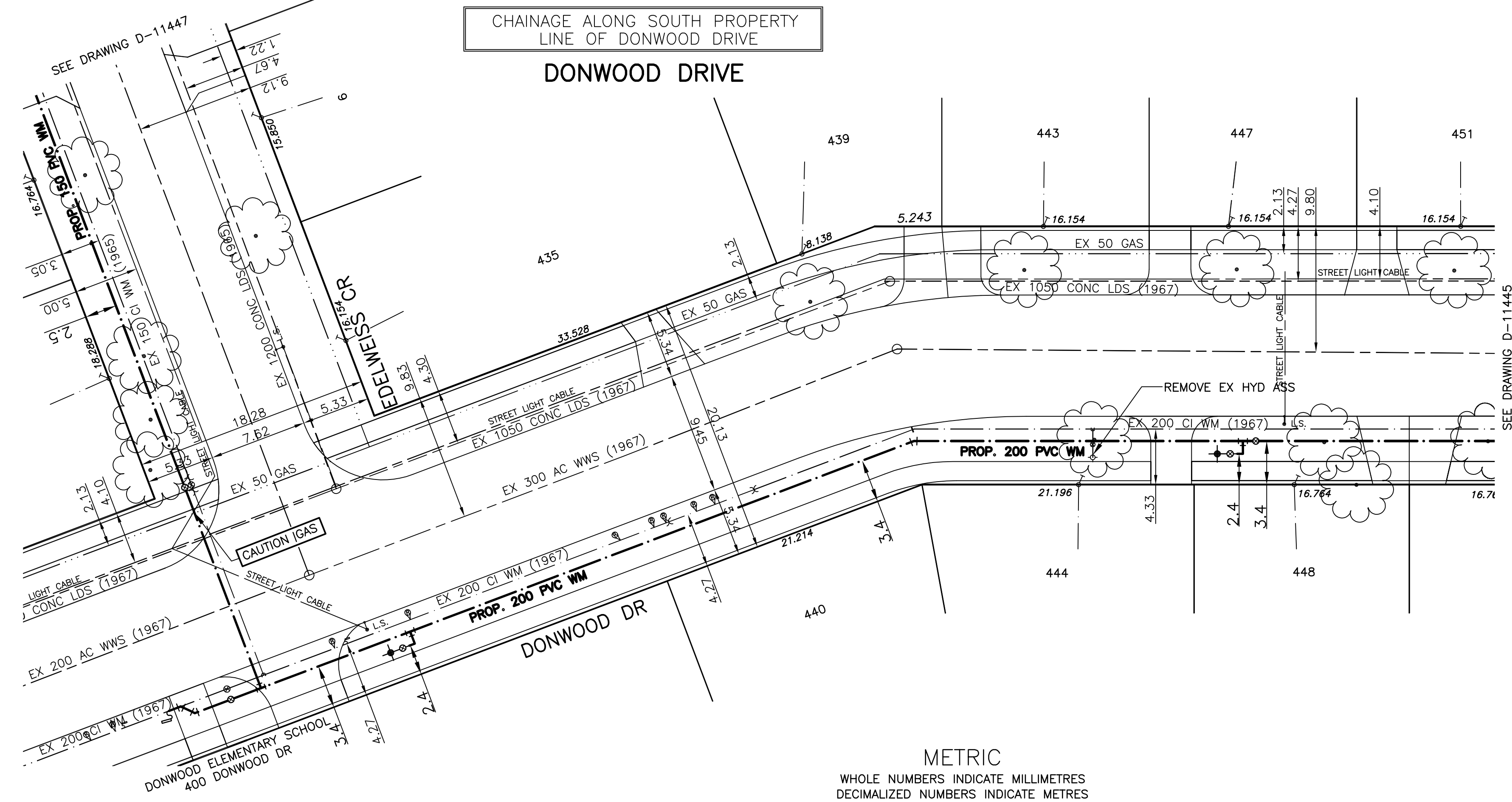


CHAINAGE ALONG SOUTH PROPERTY LINE OF DONWOOD DRIVE



ADDRESS & NATURE OF SERVICE	SIZE	TYPE (Street)	SHORT & LONG MEASUREMENT
421 Donwood Drive Residential	34	Copper	2.7 S OF N HOUSE CORNER 7.8 FROM HOUSE FRONT
435 Donwood Drive Residential	34	Copper	2.3 N OF S HOUSE CORNER 8.4 FROM HOUSE FRONT
439 Donwood Drive Residential	34	Copper	7.6 W OF E HOUSE CORNER 11.3 FROM HOUSE FRONT
443 Donwood Drive Residential	34	Copper	5.0 E OF W HOUSE CORNER 7.8 FROM HOUSE FRONT
444 Donwood Drive Residential	34	Copper	5.0 W E HOUSE CORNER 9.3 FROM HOUSE FRONT
447 Donwood Drive Residential	34	Copper	3.0 E OF W HOUSE CORNER 7.3 FROM HOUSE FRONT
448 Donwood Drive Residential	34	Copper	4.6 W OF E HOUSE CORNER 9.9 FROM HOUSE FRONT

- NOTES:**
- ALL GATE VALVES ARE COUNTER-CLOCKWISE TO OPEN WITH A BLACK OPERATING NUT.
 - WATERMAIN TO BE INSTALLED BY TRENCHLESS METHODS.
 - BACKFILL IS CLASS 5 WITHIN BOULEVARD AND CLASS 3 WHEN WITHIN PAVEMENT/SIDEWALK OR WHEN WITHIN 1.0m OF PAVEMENT OR SIDEWALK.
 - WATER SERVICES ARE 19mm UNLESS OTHERWISE NOTED.
 - MINIMUM COVER TO TOP OF WATERMAIN SHALL BE 2.4m.
 - LOCATION OF ALL SERVICES TO BE CONFIRMED IN FIELD.
 - EXPOSE EXISTING WATERMAIN TO CONFIRM DEPTH PRIOR TO CONSTRUCTION.
 - ALL LEAD SERVICES TO BE RENEWED TO PROPERTY LINE.
 - SERVICES TO BE RENEWED SHALL BE REPLACED FROM WATERMAIN TO PROPERTY LINE. ALL OTHERS TO BE RECONNECTED.

EXISTING	LEGEND - PLAN	PROPOSED	EXISTING	LEGEND - PLAN	PROPOSED	EXISTING	LEGEND - PROFILE	PROPOSED
	WATERMAIN			REDUCER			WATERMAIN	
	HYDRANT			PLUG			LAND DRAINAGE SEWER	
	VALVE			TRAFFIC SIGNAL			WASTE WATER SEWER	
	LAND DRAINAGE SEWER			GAS			JUNCTIONS	
	WASTE WATER SEWER			HYDRO			CULVERT	
	MANHOLE			M.T.S.				
	CATCH BASIN			SURVEY BAR				
	CURB INLET			CURB STOP				
	TEE			C.B. LEAD				
	BEND			TREE				
	ANODE			LAMP STANDARD				

LOCATION APPROVED

SUPV. U/G STRUCTURES DATE
COMMITTEE

NOTE:
LOCATION OF UNDERGROUND STRUCTURES AS SHOWN ARE BASED ON THE BEST INFORMATION AVAILABLE BUT NO GUARANTEE IS GIVEN THAT ALL EXISTING UTILITIES ARE SHOWN OR THAT THE GIVEN LOCATIONS ARE EXACT. CONFIRMATION OF EXISTENCE AND EXACT LOCATION OF ALL SERVICES MUST BE OBTAINED FROM THE INDIVIDUAL UTILITIES BEFORE PROCEEDING WITH CONSTRUCTION.

NO.	REVISIONS	DATE	BY
1	BID OPPORTUNITY 478-2008	JUNE 08	DJ

GENIVAR
200 TACHE AVENUE WINNIPEG, MANITOBA R2H 1A7
PH: (204) 233-2113 FAX: (204) 233-2080

DESIGNED BY: DJ
CHECKED BY: SM
DRAWN BY: DJ
APPROVED BY: IMcK

HOR. SCALE: 1:250
VERT. SCALE: 1:50

RELEASED FOR CONSTRUCTION BY: K. ZUREK P.ENG.
ORIGINALLY SIGNED BY: P.ENG.

DATE: JUNE 08
DATE: JUNE 24 2008

ENGINEER
PROVINCE OF MANITOBA
REGISTERED PROFESSIONAL ENGINEER
I. G. MCKINNON

CONSULTANT DRAWING NO. 069-023-15

THE CITY OF WINNIPEG
WATER AND WASTE DEPARTMENT

2008 CAPITAL WORKS
WATERMAIN RENEWALS
DONWOOD DRIVE

75M WEST OF EDELWEISS CRESCENT(EAST LEG) TO EDELWEISS CRESCENT (WEST LEG)

SHEET 2 OF 2
CITY DRAWING NO. D-11446

APECM
Certificate of Authorization
GENIVAR Consultants
No. 4318 Expiry: April 30, 2009

