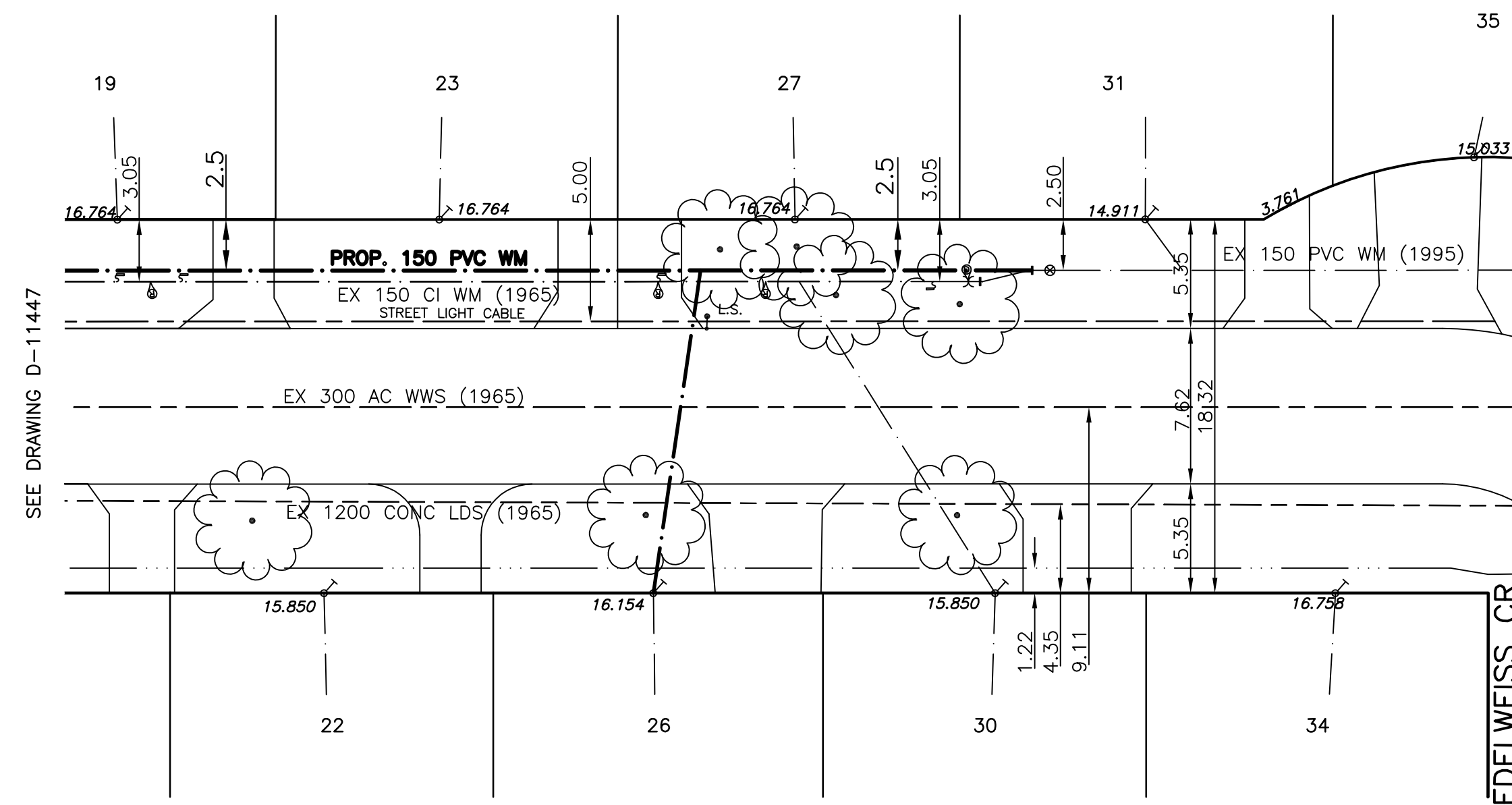
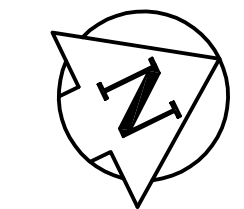


CHAINAGE ALONG NORTH PROPERTY LINE OF EDELWEISS DRIVE
EDELWEISS CRESCENT (WEST LEG)



WATER SERVICE INFORMATION			
ADDRESS & NATURE OF SERVICE	SIZE	TYPE	SHORT & LONG MEASUREMENT
19 Edelweiss Crescent Residential	34	Copper	5.0 S OF N HOUSE CORNER 9.5 FROM HOUSE FRONT
22 Edelweiss Crescent Residential	34	Copper	4.9 S OF N HOUSE CORNER 8.2 FROM HOUSE FRONT
23 Edelweiss Crescent Residential	34	Copper	5.9 S N HOUSE CORNER 9.5 FROM HOUSE FRONT
26 Edelweiss Crescent Residential	34	Copper	5.6 S N HOUSE CORNER 7.9 FROM HOUSE FRONT
27 Edelweiss Crescent Residential	34	Copper	7.0 S N HOUSE CORNER 7.9 FROM HOUSE FRONT
30 Edelweiss Crescent Residential	34	Copper	4.0 S N HOUSE CORNER 7.9 FROM HOUSE FRONT
31 Edelweiss Crescent Residential	34	Copper	5.2 S OF N HOUSE CORNER 7.6 FROM HOUSE FRONT
34 Edelweiss Crescent Residential	34	Copper	3.7 S N HOUSE CORNER 7.9 FROM HOUSE FRONT



- NOTES:**
1. ALL GATE VALVES ARE COUNTER-CLOCKWISE TO OPEN WITH A BLACK OPERATING NUT.
 2. WATERMAIN TO BE INSTALLED BY TRENCHLESS METHODS.
 3. BACKFILL IS CLASS 5 WITHIN BOULEVARD AND CLASS 3 WHEN WITHIN PAVEMENT/SIDEWALK OR WHEN WITHIN 1.0m OF PAVEMENT OR SIDEWALK.
 4. WATER SERVICES ARE 19mm UNLESS OTHERWISE NOTED.
 5. MINIMUM COVER TO TOP OF WATERMAIN SHALL BE 2.4m.
 6. LOCATION OF ALL SERVICES TO BE CONFIRMED IN FIELD.
 7. EXPOSE EXISTING WATERMAIN TO CONFIRM DEPTH PRIOR TO CONSTRUCTION.
 8. ALL LEAD SERVICES TO BE RENEWED TO PROPERTY LINE.
 9. SERVICES TO BE RENEWED SHALL BE REPLACED FROM WATERMAIN TO PROPERTY LINE. ALL OTHERS TO BE RECONNECTED.

METRIC
WHOLE NUMBERS INDICATE MILLIMETRES
DECIMALIZED NUMBERS INDICATE METRES

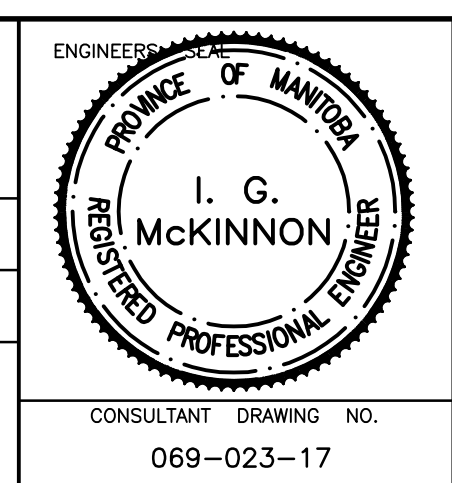
EXISTING	LEGEND - PLAN	PROPOSED	EXISTING	LEGEND - PLAN	PROPOSED	EXISTING	LEGEND - PROFILE	PROPOSED
	WATERMAIN			REDUCER			WATERMAIN	
	HYDRANT			PLUG			LAND DRAINAGE SEWER	
	VALVE			TRAFFIC SIGNAL			WASTE WATER SEWER	
	LAND DRAINAGE SEWER			GAS			HYDRO	
	WASTE WATER SEWER			M.T.S.			JUNCTIONS	
	MANHOLE			SURVEY BAR			CULVERT	
	CATCH BASIN			CURB STOP				
	CURB INLET			C.B. LEAD				
	TREE			LAMP STANDARD				
	BEND							
	ANODE							

LOCATION APPROVED		DATE	
SUPV. U/G STRUCTURES COMMITTEE			
NOTE:	LOCATION OF UNDERGROUND STRUCTURES AS SHOWN ARE BASED ON THE BEST INFORMATION AVAILABLE BUT NO GUARANTEE IS GIVEN THAT ALL EXISTING UTILITIES ARE SHOWN OR THAT THE GIVEN LOCATIONS ARE EXACT. CONFIRMATION OF EXISTENCE AND EXACT LOCATION OF ALL SERVICES MUST BE OBTAINED FROM THE INDIVIDUAL UTILITIES BEFORE PROCEEDING WITH CONSTRUCTION.		

B.M. 12-024
ELEV. 230.143

GENIVAR
200 TACHE AVENUE WINNIPEG, MANITOBA R2H 1A7
PH: (204)-233-2113 FAX: (204)-233-2080

DESIGNED BY: DJ	CHECKED BY: SM
DRAWN BY: DJ	APPROVED BY: IMcK
HOR. SCALE: 1:250	RELEASED FOR CONSTRUCTION: K. ZUREK
VERT. SCALE: 1:50	ORIGINALLY SIGNED BY: P.ENG.
DATE: JUNE 08	DATE: JUNE 24 2008



THE CITY OF WINNIPEG
WATER AND WASTE DEPARTMENT

2008 CAPITAL WORKS
WATERMAIN RENEWALS
EDELWEISS CRESCENT (WEST LEG)

75M NORTH OF DONWOOD DRIVE TO
122M NORTH OF DONWOOD DRIVE

SHEET 2 OF 2
CITY DRAWING NO. D-11448

CONSULTANT DRAWING NO. 069-023-17