

METRIC
WHOLE NUMBERS INDICATE MILLIMETRES
DECIMALIZED NUMBERS INDICATE METRES



- NOTES:**
1. ALL GATE VALVES ARE COUNTER-CLOCKWISE TO OPEN WITH A BLACK OPERATING NUT.
 2. WATERMAIN TO BE INSTALLED BY TRENCHLESS METHODS.
 3. BACKFILL IS CLASS 5 WITHIN BOULEVARD AND CLASS 3 WHEN WITHIN PAVEMENT/SIDEWALK OR WHEN WITHIN 1.0m OF PAVEMENT OR SIDEWALK.
 4. WATER SERVICES ARE 19mm UNLESS OTHERWISE NOTED.
 5. MINIMUM COVER TO TOP OF WATERMAIN SHALL BE 2.4m.
 6. LOCATION OF ALL SERVICES TO BE CONFIRMED IN FIELD.
 7. EXPOSE EXISTING WATERMAIN TO CONFIRM DEPTH PRIOR TO CONSTRUCTION.
 8. ALL LEAD SERVICES TO BE RENEWED TO PROPERTY LINE.
 9. SERVICES TO BE RENEWED SHALL BE REPLACED FROM WATERMAIN TO PROPERTY LINE. ALL OTHERS TO BE RECONNECTED.

---	WATERMAIN	---	REDUCER	---	150mm W.M.	---	WATERMAIN	---	150mm W.M.
+	HYDRANT	+	PLUG	+	300mm L.D.S.	+	LAND DRAINAGE SEWER	+	300mm L.D.S.
+	VALVE	+	TRAFFIC SIGNAL	+	250mm W.W.S.	+	WASTE WATER SEWER	+	250mm W.W.S.
---	LAND DRAINAGE SEWER	---	GAS	---	M.T.S.	---	JUNCTIONS	---	---
---	WASTE WATER SEWER	---	HYDRO	---	SURVEY BAR	---	CULVERT	---	---
○	MANHOLE	○	M.T.S.	○	CURB INLET	○	---	○	---
□	CATCH BASIN	□	C.B. LEAD	□	TEE	□	---	□	---
△	CURB INLET	△	TREE	△	BEND	△	---	△	---
+	TEE	+	LAMP STANDARD	+	ANODE	+	---	+	---
+	BEND	+	---	+	---	+	---	+	---
+	ANODE	+	---	+	---	+	---	+	---
---	EXISTING	---	LEGEND - PLAN	---	EXISTING	---	LEGEND - PROFILE	---	PROPOSED

LOCATION APPROVED

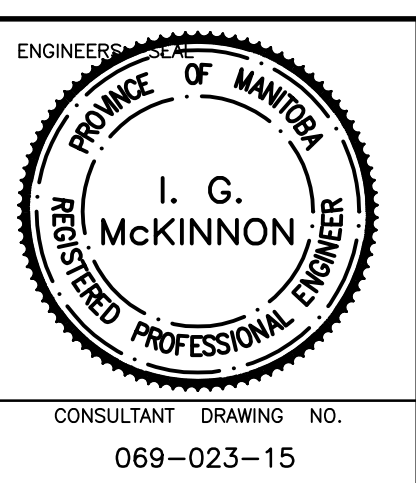
SUPV. U/G STRUCTURES DATE COMMITTEE

NOTE:
LOCATION OF UNDERGROUND STRUCTURES AS SHOWN ARE BASED ON THE BEST INFORMATION AVAILABLE BUT NO GUARANTEE IS GIVEN THAT ALL EXISTING UTILITIES ARE SHOWN OR THAT THE GIVEN LOCATIONS ARE EXACT. CONFIRMATION OF EXISTENCE AND EXACT LOCATION OF ALL SERVICES MUST BE OBTAINED FROM THE INDIVIDUAL UTILITIES BEFORE PROCEEDING WITH CONSTRUCTION.

B.M. ELEV. 11-002 231.784	DESIGNED BY DJ	CHECKED BY SM
	DRAWN BY DJ	APPROVED BY IMcK
	HOR. SCALE: 1:250	RELEASED FOR CONSTRUCTION
	VERT. SCALE: 1:50	ORIGINALLY SIGNED BY K. ZUREK P.ENG.
	DATE JUNE 08	DATE JUNE 24 2008

GENIVAR
200 TACHE AVENUE WINNIPEG, MANITOBA R2H 1A7
PH: (204)-233-2113 FAX: (204)-233-2080

CONSULTANT DRAWING NO. 069-023-15



THE CITY OF WINNIPEG
WATER AND WASTE DEPARTMENT

2008 CAPITAL WORKS
NEW WATERMAIN
JACQUES AVENUE
HAM STREET TO ORUM DRIVE

SHEET 2 OF 2
CITY DRAWING NO. D-11450